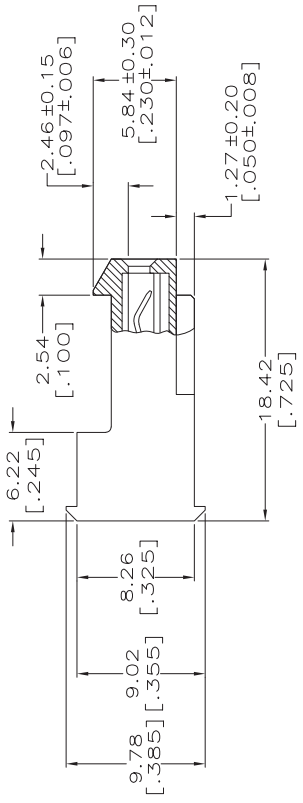
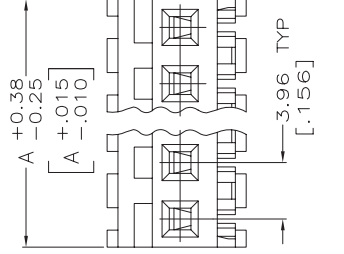
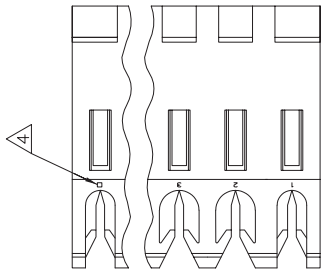


THIS DRAWING IS UNPUBLISHED.
 © COPYRIGHT BY TYCO ELECTRONICS CORPORATION. ALL RIGHTS RESERVED.



△ MATERIAL: CONNECTOR - NYLON UL94V-2 (YELLOW).
 CONTACTS - 0.30[0.12] THICK COPPER ALLOY.
 PLATING - 0.0038[0.00015] GOLD IN CONTACT AREA.
 0.00203[0.00080] MIN THICKNESS BRIGHT
 TIN-LEAD IN SLOT AREA FOR 641169-2 THRU
 2-641169-4 OR MATTE WHISKER MITIGATED
 TIN IN THE SLOT AREA FOR 3-641169-2 THRU
 5-641169-4 OVER NICKEL UNDERPLATE.

2. CONTACTS ACCEPT 20 AWG WIRE WITH 2.41[0.095] MAX INSULATION DIAMETER.
3. CONTACTS MUST ACCEPT 1.14±0.03[0.045±0.001] SQUARE POST AND REMAIN LOCKED IN POSITION.
- △ IDENTIFICATION NUMBER FOR LAST CIRCUIT MAY NOT APPEAR ON ALL ASSEMBLIES.
5. DIMENSIONS IN BRACKETS ARE IN INCHES.
6. HOUSING FEATURES ARE: FEED-THRU WITH LOCKING RAMP.

△ NOTE DELETED.
 △ NOTE DELETED.



LOC	DIST	REV	DATE	BY	APP'D
CM	O	H	21JUN07	KW	DB

ECO-07-012879	DESCRIPTION
ECCO-07-012879	

DATE	BY	APP'D
21JUN07	KW	DB

REV	DATE	DESCRIPTION	BY	APP'D
95.10	[3.744]		24	5-641169-4
91.14	[3.588]		23	5-641169-3
87.17	[3.432]		22	5-641169-2
83.21	[3.276]		21	5-641169-1
79.25	[3.120]		20	5-641169-0
75.29	[2.964]		19	4-641169-9
71.32	[2.808]		18	4-641169-8
67.36	[2.652]		17	4-641169-7
63.40	[2.496]		16	4-641169-6
59.44	[2.340]		15	4-641169-5
55.47	[2.184]		14	4-641169-4
51.51	[2.028]		13	4-641169-3
47.55	[1.872]		12	4-641169-2
43.59	[1.716]		11	4-641169-1
39.62	[1.560]		10	4-641169-0
35.66	[1.404]		9	3-641169-9
31.70	[1.248]		8	3-641169-8
27.74	[1.092]		7	3-641169-7
23.77	[0.936]		6	3-641169-6
19.81	[0.780]		5	3-641169-5
15.85	[0.624]		4	3-641169-4
11.89	[0.468]		3	3-641169-3
7.92	[0.312]		2	3-641169-2
95.10	[3.744]		24	2-641169-4
91.14	[3.588]		23	2-641169-3
87.17	[3.432]		22	2-641169-2
83.21	[3.276]		21	2-641169-1
79.25	[3.120]		20	2-641169-0
75.29	[2.964]		19	1-641169-9
71.32	[2.808]		18	1-641169-8
67.36	[2.652]		17	1-641169-7
63.40	[2.496]		16	1-641169-6
59.44	[2.340]		15	1-641169-5
55.47	[2.184]		14	1-641169-4
51.51	[2.028]		13	1-641169-3
47.55	[1.872]		12	1-641169-2
43.59	[1.716]		11	1-641169-1
39.62	[1.560]		10	1-641169-0
35.66	[1.404]		9	641169-9
31.70	[1.248]		8	641169-8
27.74	[1.092]		7	641169-7
23.77	[0.936]		6	641169-6
19.81	[0.780]		5	641169-5
15.85	[0.624]		4	641169-4
11.89	[0.468]		3	641169-3
7.92	[0.312]		2	641169-2

THIS DRAWING IS A CONTROLLED DOCUMENT.	REV	DATE	BY	APP'D
	B. LEWIS	3-11-98		
	OK	3-11-98		
	SWING			
	APD			
	NAME			
	PRODUCT SPEC	108-1051		
	APPLICATION SPEC			
	SIZE	0.13 [0.05]		
	WEIGHT	114-1020		
	FINISH			
	ANGLES			
	MATERIAL			
	CONTRACT FINISH			
	DIM A			
	NO. OF CIRCUITS			
	PART NO.			
	TYCO ELECTRONICS			
	TYCO ELECTRONICS CORPORATION			
	HARRISBURG, PA 17105-3608			
	MTA-156 CONNECTOR ASSEMBLY,			
	20 AWG, STANDARD			
	SCALE	4:1		
	SHEET	1		
	OF	1		
	REV			
	RESTRICTED TO			
	SIZE	A2		
	DATE CODE	00779		
	DRAWING NO	641169		