

2170435-1 ✓ ACTIVE

SFP28 | XFP

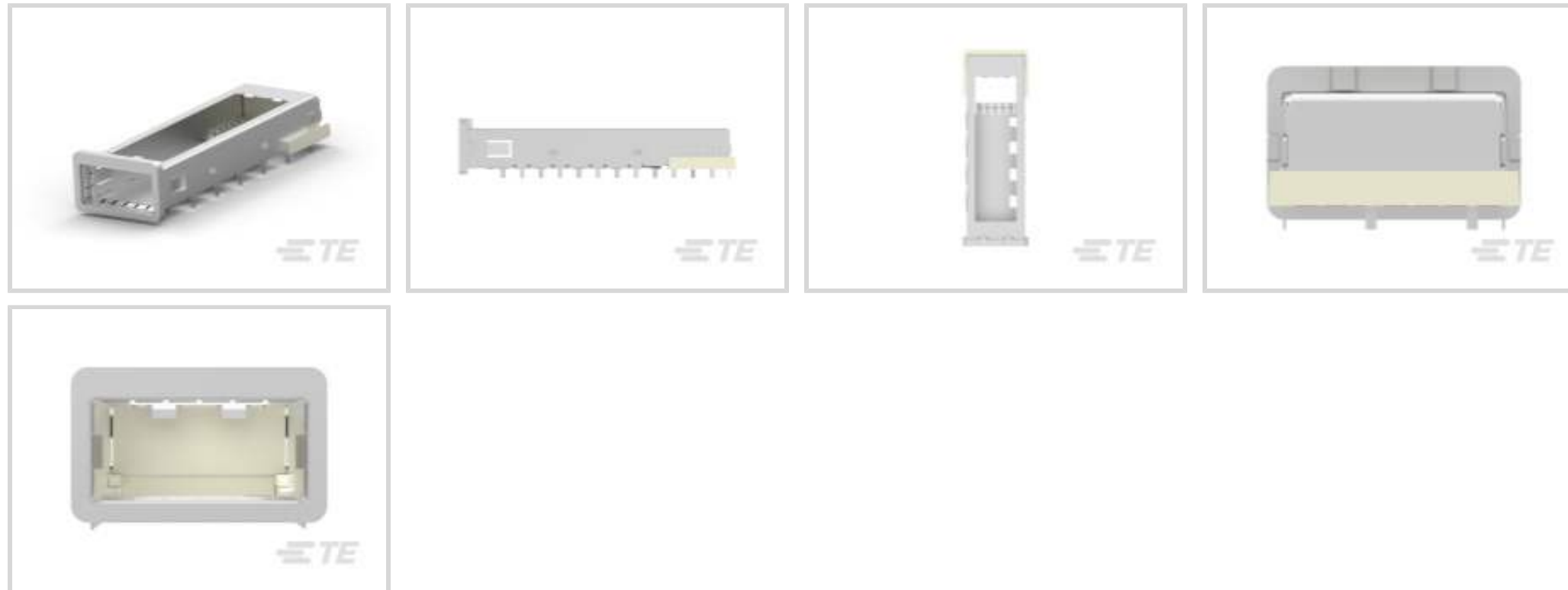
TE Internal #: 2170435-1

XFP, Cage Assembly, Through Hole - Press-Fit Mount, 1 Port, 1 x 1,  
Data Rate (Max) 10 Gb/s, Cable-to-Board, Sealable, Printed Circuit  
Board, XFP

[View on TE.com >](#)



Connectors > Pluggable IO Connectors & Cages > XFP > XFP Cage Assemblies and Kits



Pluggable I/O Product Type: **Cage Assembly**

PCB Mounting Style: **Through Hole - Press-Fit**

Number of Ports: **1**

Port Matrix Configuration: **1 x 1**

Data Rate (Max): **10 Gb/s**

[All XFP Cage Assemblies and Kits \(22\)](#)

## Features

### Product Type Features

Form Factor	XFP
Cage Type	Single
Pluggable I/O Product Type	Cage Assembly
Connector System	Cable-to-Board
Sealable	Yes
Connector & Contact Terminates To	Printed Circuit Board

### Configuration Features

Number of Ports	1
Port Matrix Configuration	1 x 1

### Electrical Characteristics

Data Rate (Max)	10 Gb/s
-----------------	---------

### Body Features



Cage Plating Material	Tin
-----------------------	-----

### Termination Features

Termination Post & Tail Length	2.05 mm[.08 in]
Termination Method to Printed Circuit Board	Through Hole - Press-Fit

### Mechanical Attachment

PCB Mounting Style	Through Hole - Press-Fit
Connector Mounting Type	Board Mount

### Housing Features

Cage Material	Copper Alloy
---------------	--------------

### Dimensions

Product Width	65.53 mm[2.57 in]
Product Length	21.7 mm[.854 in]

### Usage Conditions

Operating Temperature Range	-10 – 70 °C[-14 – 158 °F]
-----------------------------	---------------------------

### Operation/Application

Heat Sink Application	Yes
Heat Sink Compatible	No
For Use With Pluggable I/O Products	XFP Connector / XFP Cable Plug
Circuit Application	Signal

### Packaging Features

Packaging Method	Tray
------------------	------

### Other

Included Lightpipe	No
--------------------	----

## Product Compliance

[For compliance documentation, visit the product page on TE.com>](#)

EU RoHS Directive 2011/65/EU	Compliant
EU ELV Directive 2000/53/EC	Compliant
China RoHS 2 Directive MIIT Order No 32, 2016	No Restricted Materials Above Threshold
EU REACH Regulation (EC) No. 1907/2006	Current ECHA Candidate List: JUNE 2023 (235) Candidate List Declared Against: JAN 2022 (223)



Does not contain REACH SVHC

Halogen Content

Not Low Halogen - contains Br or Cl > 900 ppm.

Solder Process Capability

Not applicable for solder process capability

Product Compliance Disclaimer

This information is provided based on reasonable inquiry of our suppliers and represents our current actual knowledge based on the information they provided. This information is subject to change. The part numbers that TE has identified as EU RoHS compliant have a maximum concentration of 0.1% by weight in homogenous materials for lead, hexavalent chromium, mercury, PBB, PBDE, DBP, BBP, DEHP, DIBP, and 0.01% for cadmium, or qualify for an exemption to these limits as defined in the Annexes of Directive 2011/65/EU (RoHS2). Finished electrical and electronic equipment products will be CE marked as required by Directive 2011/65/EU. Components may not be CE marked. Additionally, the part numbers that TE has identified as EU ELV compliant have a maximum concentration of 0.1% by weight in homogenous materials for lead, hexavalent chromium, and mercury, and 0.01% for cadmium, or qualify for an exemption to these limits as defined in the Annexes of Directive 2000/53/EC (ELV). Regarding the REACH Regulation, the information TE provides on SVHC in articles for this part number is based on the latest European Chemicals Agency (ECHA) 'Guidance on requirements for substances in articles' posted at this URL: <https://echa.europa.eu/guidance-documents/guidance-on-reach>

### Compatible Parts



TE Part # 1542618-2  
XFP MSA SAN APPLICATION



TE Part # 1489948-2  
XFP HEAT SINK CLIP, PLATED

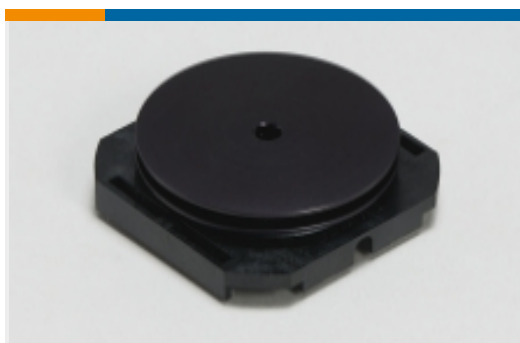


TE Part # 1963850-2  
XFP. MSA HEATSINK 10mm TALL



TE Part # 1888810-2  
EMI/Dust Cover,XFP And QSFP

### Also in the Series | XFP

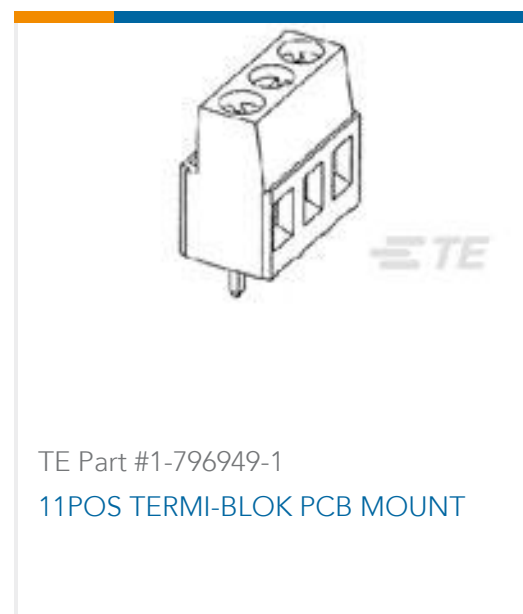


Heat Sinks(4)



XFP(31)

### Customers Also Bought



## Documents

### Product Drawings

#### XFP CAGE ASSEMBLY

English

### CAD Files

#### 3D PDF

3D

#### Customer View Model

[ENG\\_CVM\\_CVM\\_2170435-1\\_A.2d\\_dxf.zip](#)

English

#### Customer View Model

[ENG\\_CVM\\_CVM\\_2170435-1\\_A.3d\\_igs.zip](#)

English

#### Customer View Model

[ENG\\_CVM\\_CVM\\_2170435-1\\_A.3d\\_stp.zip](#)

English

By downloading the CAD file I accept and agree to the [Terms and Conditions](#) of use.

### Product Specifications

#### Product Specification

English