

MATERIALS AND FINISHES

BODY, SLEEVE, WASHER STAINLESS STEEL
PASSIVATED

CENTER CONTACT
PLATED GOLD

OUTER CONTACT BERYLLIUM COPPER
PLATED NICKEL

INSULATOR TEFLON

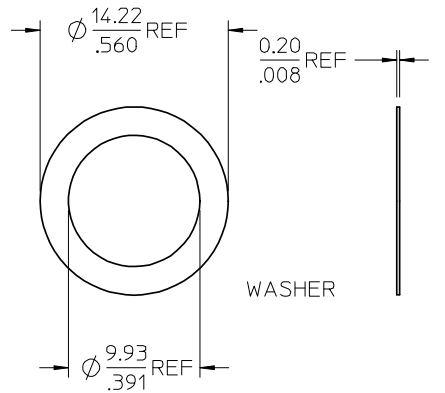
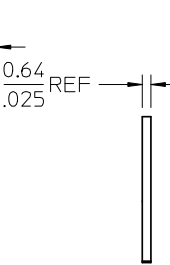
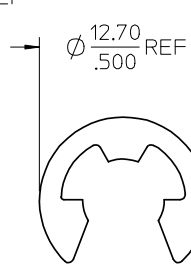
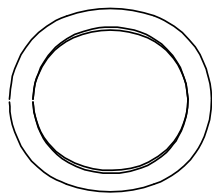
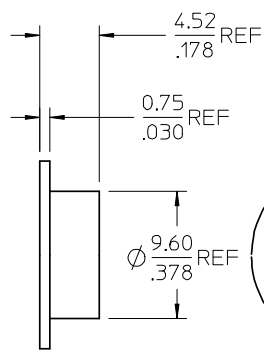
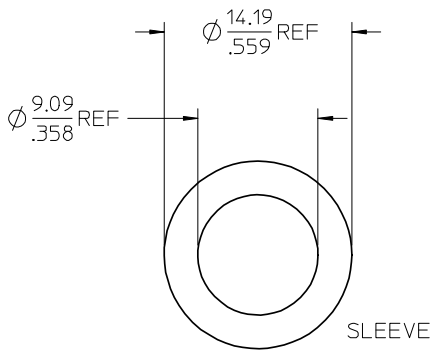
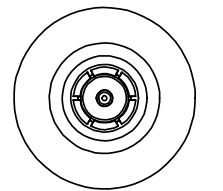
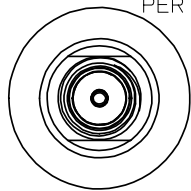
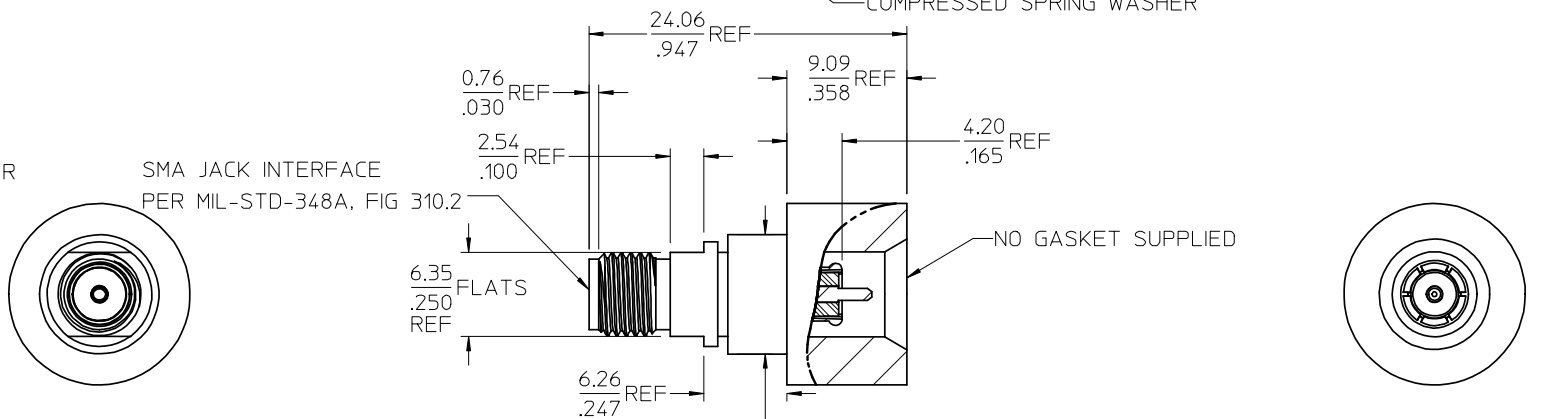
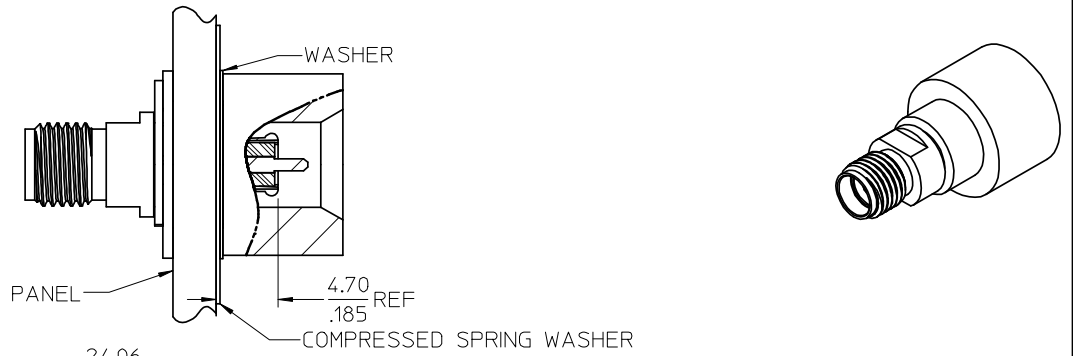
CLIP CARBON SPRING STEEL
PLATED NICKEL

WAVE WASHER BERYLLIUM COPPER
PLATED NICKEL

ELECTRICAL PERFORMANCE:

VSWR: 1.50 MAX TO 18 GHz

SMA JACK INTERFACE
PER MIL-STD-348A, FIG 310.2



SPRING WASHER

CLIP

WASHER

PART # 73251-2130 INCLUDES MOUNTING HARDWARE (PACKAGE BY BAG/1 PCS)

PART # 73251-2131 DOES NOT INCLUDE MOUNTING HARDWARE (PACKAGE BY BAG/1 PCS)

CHG: ADDED PACKAGE

EC NO: URF2008-0540
2008/04/29
DRWN: L IN
CHKD: 2008/04/30
APPR: MHUANG

DESCRIPTION
REV: B1

QUALITY SYMBOLS
=0
=0

GENERAL TOLERANCES (UNLESS SPECIFIED)
mm INCH
4 PLACES ± --- ± ---
3 PLACES ± --- ± ---
2 PLACES ± --- ± ---
1 PLACE ± --- ± ---
ANGULAR ± 2 °

DIMENSION STYLE MM/IN
DRAWN BY DATE
TEF 2003/05/16
CHECKED BY DATE
SSS 2003/05/16
APPROVED BY DATE
GMH 2003/05/16
MATERIAL NO.
SEE NOTE

SCALE DESIGN UNITS METRIC
THIRD ANGLE PROJECTION
TITLE
SMA JACK TO SMA PLUG
MODIFIED ADAPTER 50 OHM
SMA-PJ/AD
MOLEX MOLEX INCORPORATED
DOCUMENT NO. SD-73251-213
SHEET NO. 1 OF 1

DRAFT WHERE APPLICABLE
MUST REMAIN
WITHIN DIMENSIONS

THIS DRAWING CONTAINS INFORMATION THAT IS PROPRIETARY TO MOLEX
INCORPORATED AND SHOULD NOT BE USED WITHOUT WRITTEN PERMISSION