

PRODUCT NUMBER

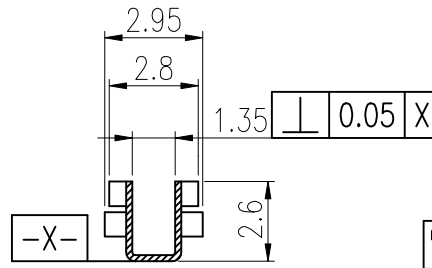
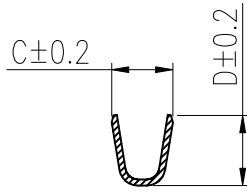
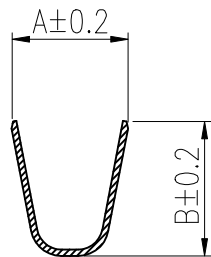
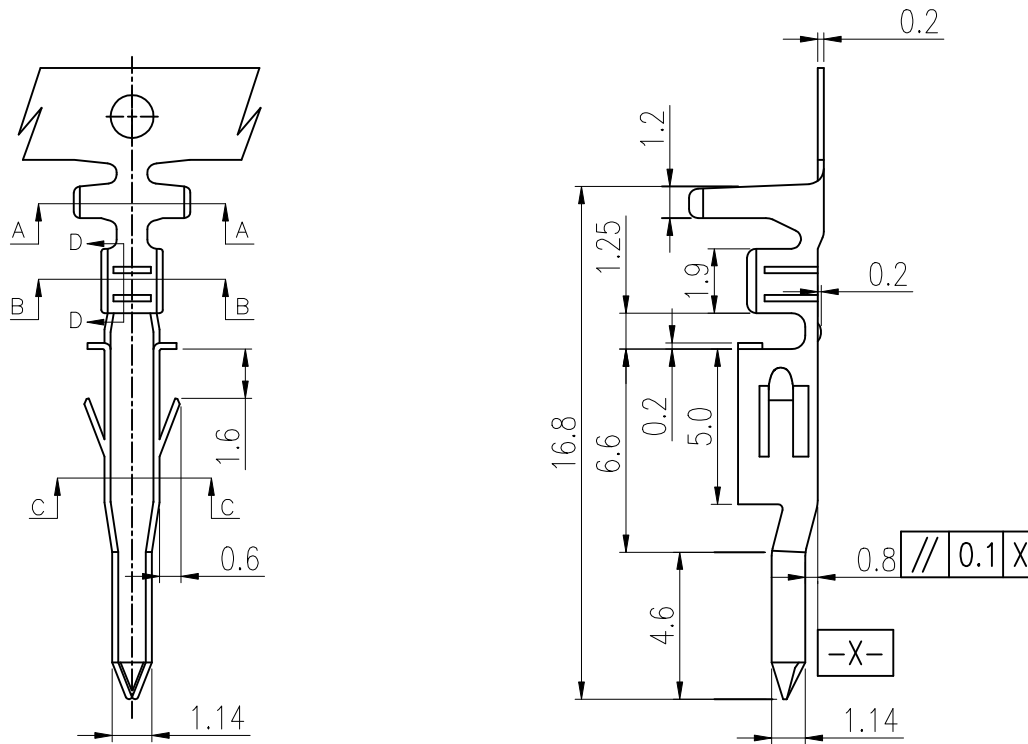
SEE PART NO. TABLE

NOTES:

1. MATERIAL: TERMINAL: SEE PART NO. LOGIC.
2. PLATING:
 - CONTACT AREA: OPTIONAL
 - CRIMP AREA : 80u" MIN. BRIGHT TIN PLATING
 - UNDER-PLATING: 30u" Min. Ni OVERALL
3. REFER GS-20-0401 APPLICATION SPEC FOR MATING CONNECTOR.
4. PRODUCT SPECIFICATION: GS-12-1181.
5. PACKAGE SPECIFICATION: GS-14-2362.(REEL PACKING)
6. APPLICATION SPECIFICATION: GS-20-0401
7. THIS LF PRODUCT MEETS EUROPEAN UNION DIRECTIVES AND OTHER COUNTRY REGULATIONS AS DESCRIBED IN GS-47-0004
8. PART NUMBER SCHEME:

10127818- X X X X LF

- X LEAD FREE
- X PLATING TYPE:
P: PRE-PLATED
BLANK: POST-PLATED
- X APPLICABLE AWG:
1. AWG #18~#22
2. AWG #24~#28
- X PLATING CODE:
1: GOLD FLASH ON CONTACT AREA
2: 80u" MIN BRIGHT TIN OVERALL
- X MATERIAL CODE:
1: PHOSPHORUS BRONZE
2: BRASS



PART NO.	A	B	C	D	APPLICABLE WIRES
10127818-XX2XLF	3.2	3.4	1.8	2.2	#24~#28
10127818-XX1XLF	3.7	4.5	1.8	2.46	#18~#22

mat'l. code		surface		tolerance		projection		product family	
		ISO 1302 ✓		ISO 406 ISO 1101				MINITEK PWR4.2	
A	ecn no	dr	date	tolerances unless otherwise specified				title	
				angles	linear	mm		PLUG CRIMP TERMINAL	
B	ELX-T-17193	TAI	2014-03-12			scale N.T.S		MINITEK PWR 4.2	
C	ELX-T-18006	TAI	2014-06-19	0°±1'				dwg no	
D	ELX-I-43510	SOMY	2023-01-09	dr	KENNY TAI	2013-11-11	sheet 1 of 1		size
				enr	SONY	2023-01-09	10127818		A3
				chr	SONY	2023-01-09	type		Product Customer Drawing
				appd	MITHUN	2023-01-09			
sheet index	revision sheet	D	1						