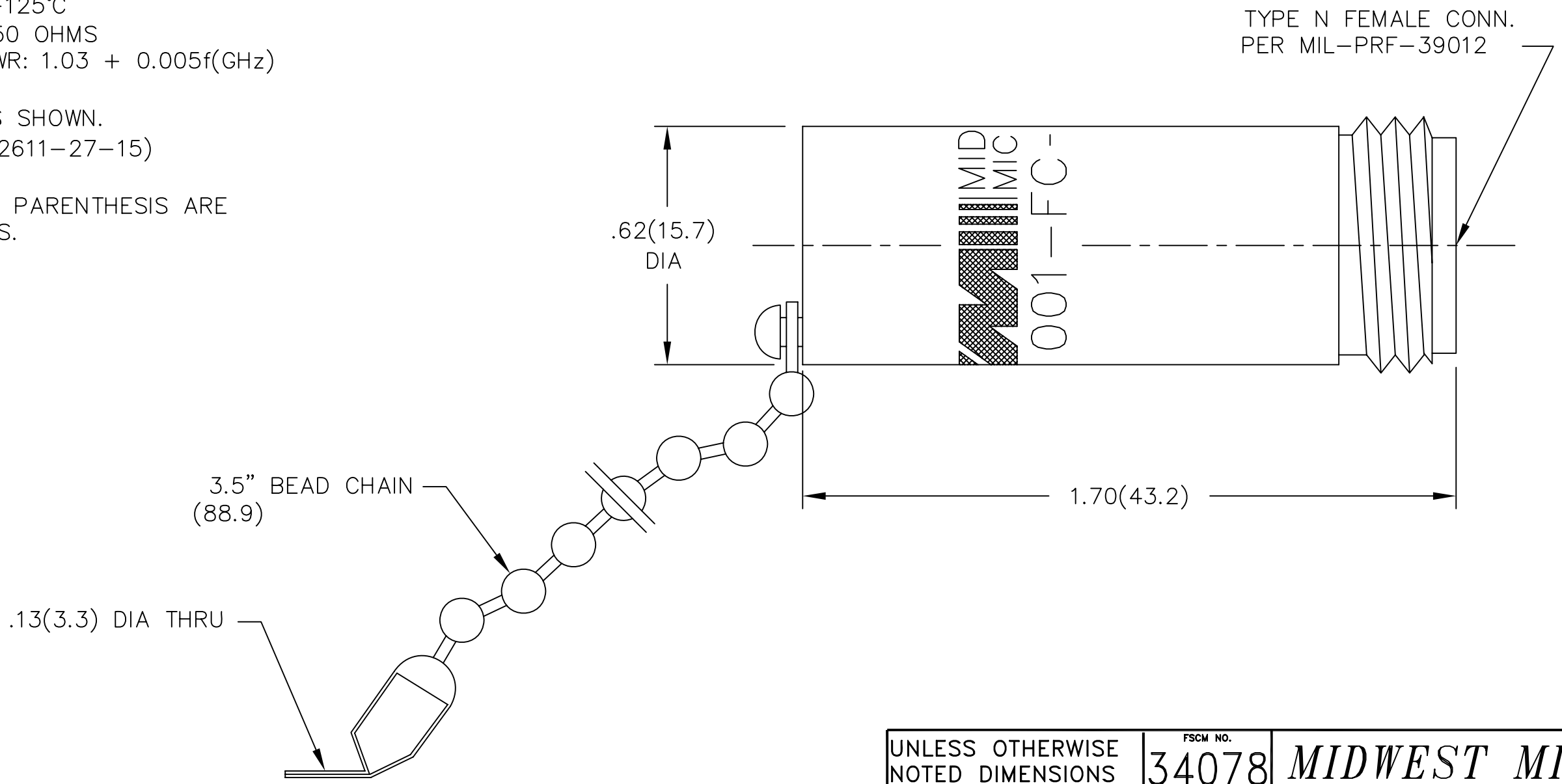


NOTES:

- 1.0 ELECTRICAL SPECIFICATIONS
  - 1.1 FREQUENCY RANGE: DC TO 18.0 GHz
  - 1.2 MAXIMUM INPUT POWER:
    - AT +25°C: 2 WATTS
    - AT +125°C: 0.5 WATTS
  - 1.3 OPERATING TEMPERATURE RANGE:
    - 55°C to +125°C
  - 1.4 IMPEDANCE: 50 OHMS
  - 1.5 MAXIMUM VSWR: 1.03 + 0.005f(GHz)
- 2.0 MARK UNIT AS SHOWN.  
(REF.: INK-02611-27-15)
- 3.0 DIMENSIONS IN PARENTHESIS ARE  
IN MILLIMETERS.



REV.	DESCRIPTION	DATE
-	RELEASED	5/23/94
-1	ADDED TITLEBLOCK	10/26/05

UNLESS OTHERWISE NOTED DIMENSIONS ARE IN INCHES AND TOLERANCES ARE:  3 PLACE DECIMALS ±.005 2 PLACE DECIMALS ±.02 FRACTIONS ±1/64 PARALLELITY: T.I.R. _____ FLATNESS: T.I.R. _____ CONCENTRICITY: T.I.R. _____ ANGLES AND PERPENDICULARITY: ±1'	FSCM NO. <b>34078</b>	<b>MIDWEST MICROWAVE</b>		
	NOTICE: The information contained in this drawing is proprietary and must not be used without the permission of Midwest Microwave		TITLE TERMINATION	
	DRAWN/DATE M.HOLLMAN 5/18/94	ENG./DATE G.KOZAK 5/20/94	DRAWING NUMBER TRM-2001-FC-NNN-02	
	CHECKED/DATE A.BEATTY 5/20/94	APPROVED/DATE	SCALE: 3=1	SHEET 1 of 1