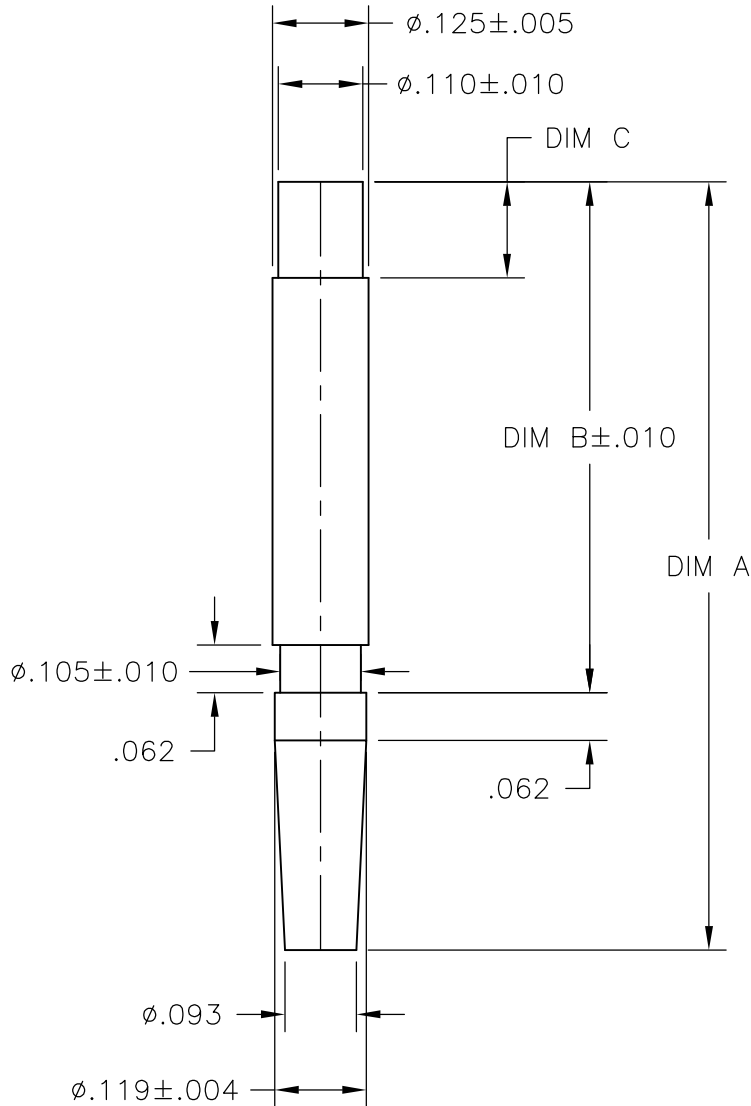


| REVISIONS | | | | |
|-----------|-----|---------------------------|-----------|-------|
| P | LTR | DESCRIPTION | DATE | APVD |
| | H2 | REVISED PER ECO-16-004223 | 20JUL2016 | NK MZ |



| | | | | | |
|----------|-------|-------|-------|---|---------------------|
| OBSOLETE | - | .486 | .821 | FLUSH MOUNT FOR STANDARD RECEPTACLE. STANDARD PACKAGING | 200821-4 |
| OBSOLETE | .067 | .607 | .942 | FLUSH MOUNT FOR STANDARD PLUG. STANDARD PACKAGING | 200821-3 |
| OBSOLETE | .125 | .665 | 1.000 | SMALL PACK PACKAGING | 200821-2 |
| | .125 | .665 | 1.000 | STANDARD PACKAGING | 200821-1 |
| | DIM C | DIM B | DIM A | DESCRIPTION | PART NO. |

THIS DRAWING IS UNPUBLISHED. ALL RIGHTS RESERVED.

COPYRIGHT - By -

| | | | | | | |
|--|------------------|---------|--------------------------------|-----------|------------|---------------|
| DIMENSIONS: INCHES | DWN | 05FEB03 | MATERIAL | NYLON | FINISH | - |
| | CHK | 2/25/93 | | | | |
| TOLERANCES UNLESS OTHERWISE SPECIFIED: | APVD | 2/25/93 | | | | |
| 0 PLC ± - | PRODUCT SPEC | - | NAME | | | |
| 1 PLC ± - | APPLICATION SPEC | - | KEYING PLUG | | | |
| 2 PLC ± - | WEIGHT | - | CONTACT SIZE 16 & 20, M SERIES | | | |
| 3 PLC ± .005 | | | SIZE | CAGE CODE | DRAWING NO | RESTRICTED TO |
| 4 PLC ± - | | | A4 | 00779 | C-200821 | - |
| ANGLES ± - | | | CUSTOMER DRAWING | | | SCALE |
| | | | | | | 4:1 |
| | | | | | | SHEET |
| | | | | | | 1 OF 1 |
| | | | | | | REV |
| | | | | | | H2 |

