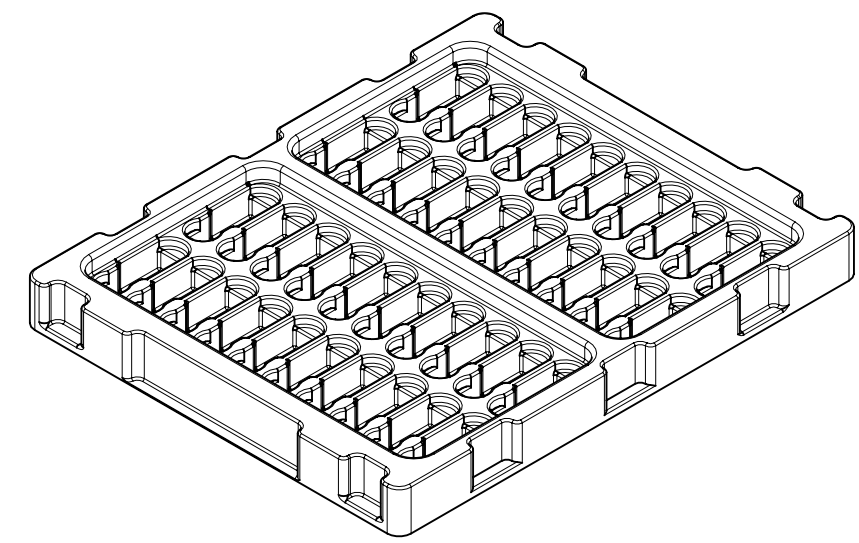
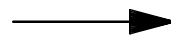
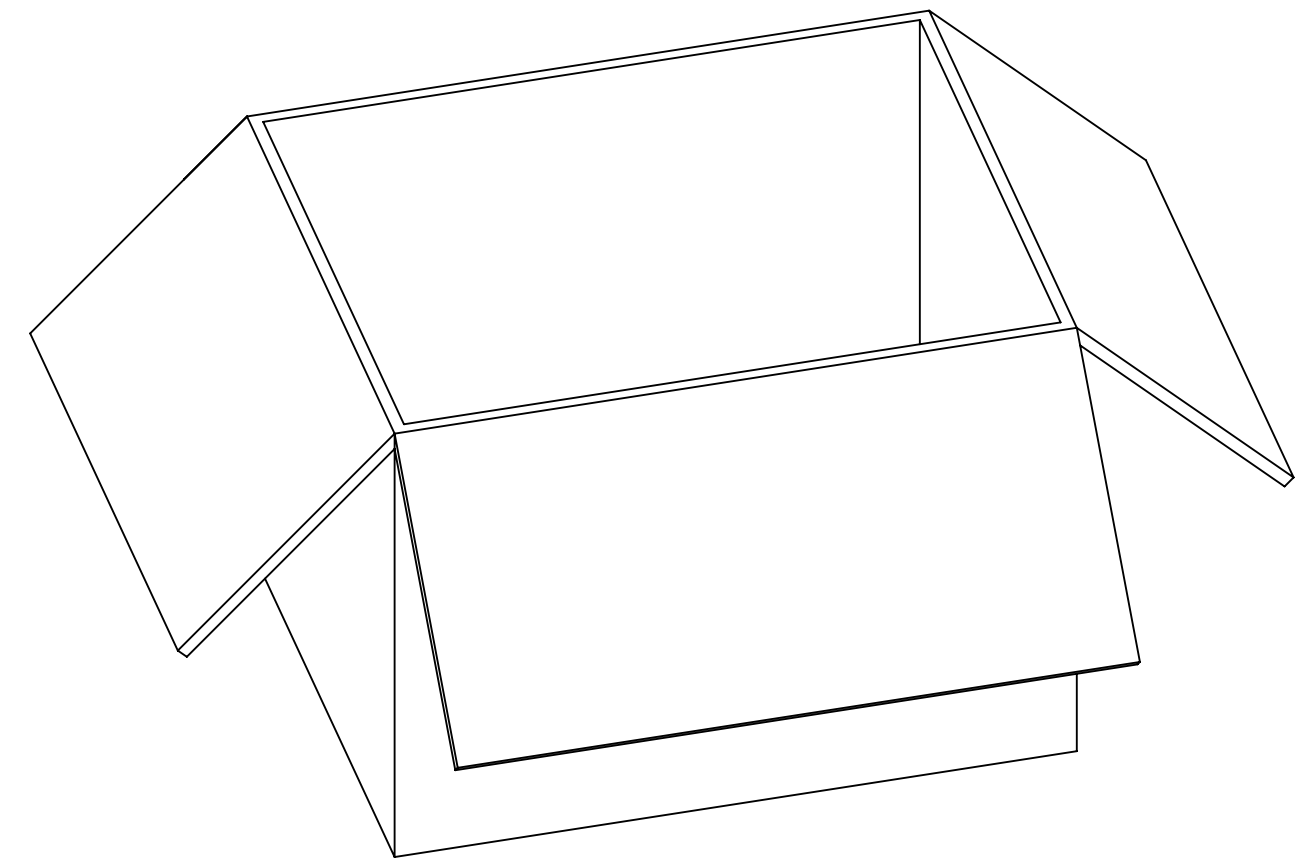


PRODUCT
P/N: XXXXX-XXXX



40 SETS PER TRAY



600 SETS PER CARTON BOX

THIS DRAWING CONTAINS INFORMATION THAT IS PROPRIETARY TO MOLEX ELECTRONIC TECHNOLOGIES, LLC AND SHOULD NOT BE USED WITHOUT WRITTEN PERMISSION									
DIMENSION UNITS		SCALE		CURRENT REV DESC: NEW RELEASE PER EWR #15500-B				molex	
mm		NTS							
GENERAL TOLERANCES (UNLESS SPECIFIED)								PACKING SPEC 89707-0169 DU 600 EWR-15500	
ANGULAR TOL		± °		EC NO: 738684				PRODUCT CUSTOMER DRAWING	
4 PLACES		±		DRWN: RYEH		2023/02/15		DOCUMENT NUMBER	
3 PLACES		±		CHK'D: YCHENG		2023/02/16		895420580	
2 PLACES		±		APPR: YCHENG		2023/02/16		DOC TYPE	
1 PLACE		±		INITIAL REVISION:				PSD	
0 PLACES		±		DRWN: RYEH		2023/02/15		DOC PART	
DRAFT WHERE APPLICABLE MUST REMAIN WITHIN DIMENSIONS				THIRD ANGLE PROJECTION		DRAWING		REVISION	
				C-SIZE		SERIES		A	
				MATERIAL NUMBER		CUSTOMER		SHEET NUMBER	
				895420580				1 OF 1	

DOCUMENT STATUS	P1	RELEASE DATE	2023/02/16	04:47:02
-----------------	----	--------------	------------	----------

MATERIALS AND FINISHES:

BODY: ZINC ALLOY
PLATED: SEE TABLE

CENTER CONTACT: PHOSPHOR BRONZE
PLATED GOLD

INSULATOR: PTFE

JAM NUT: BRASS
PLATED NICKEL

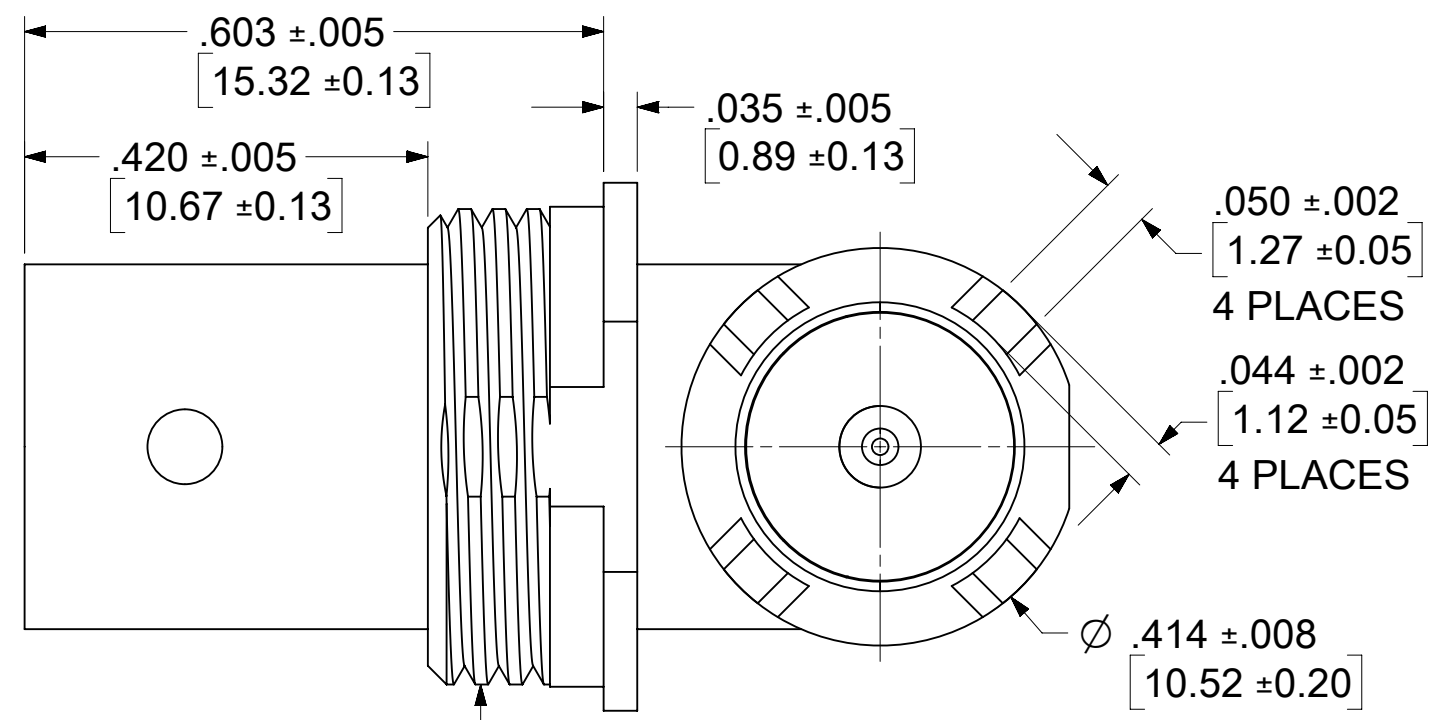
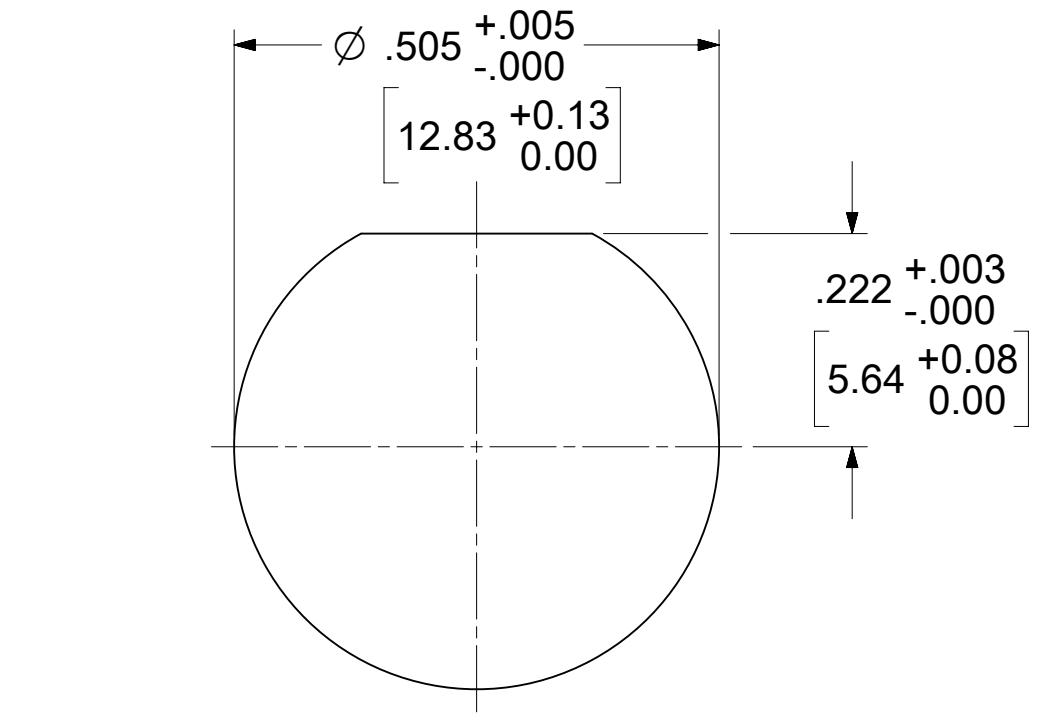
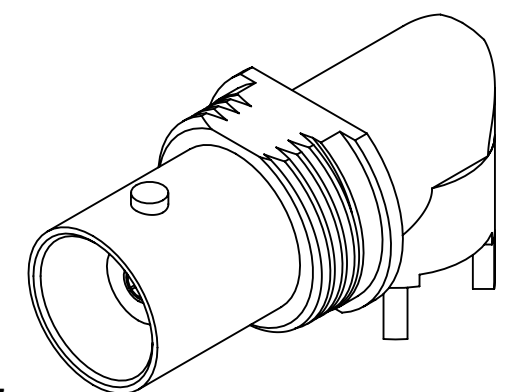
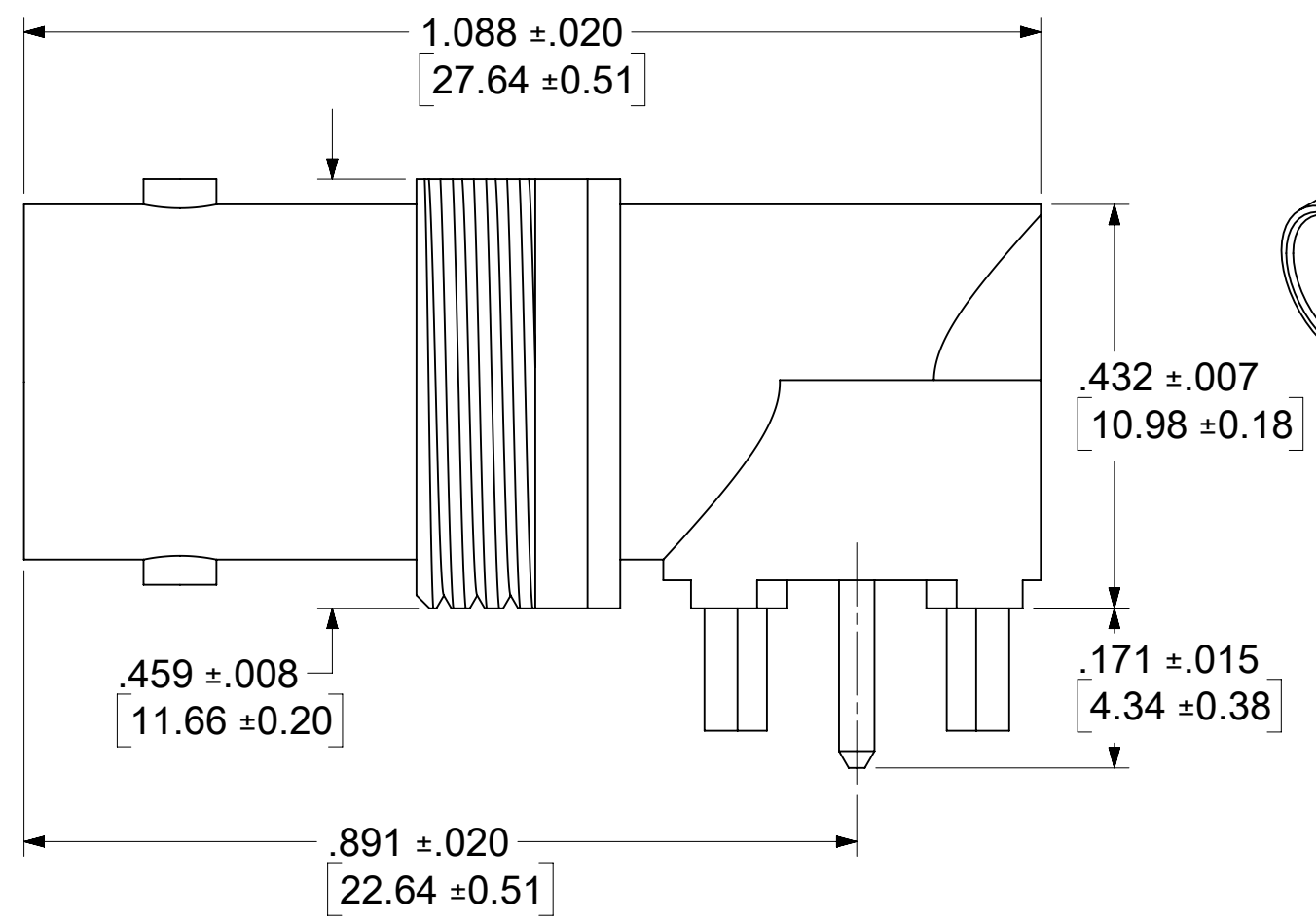
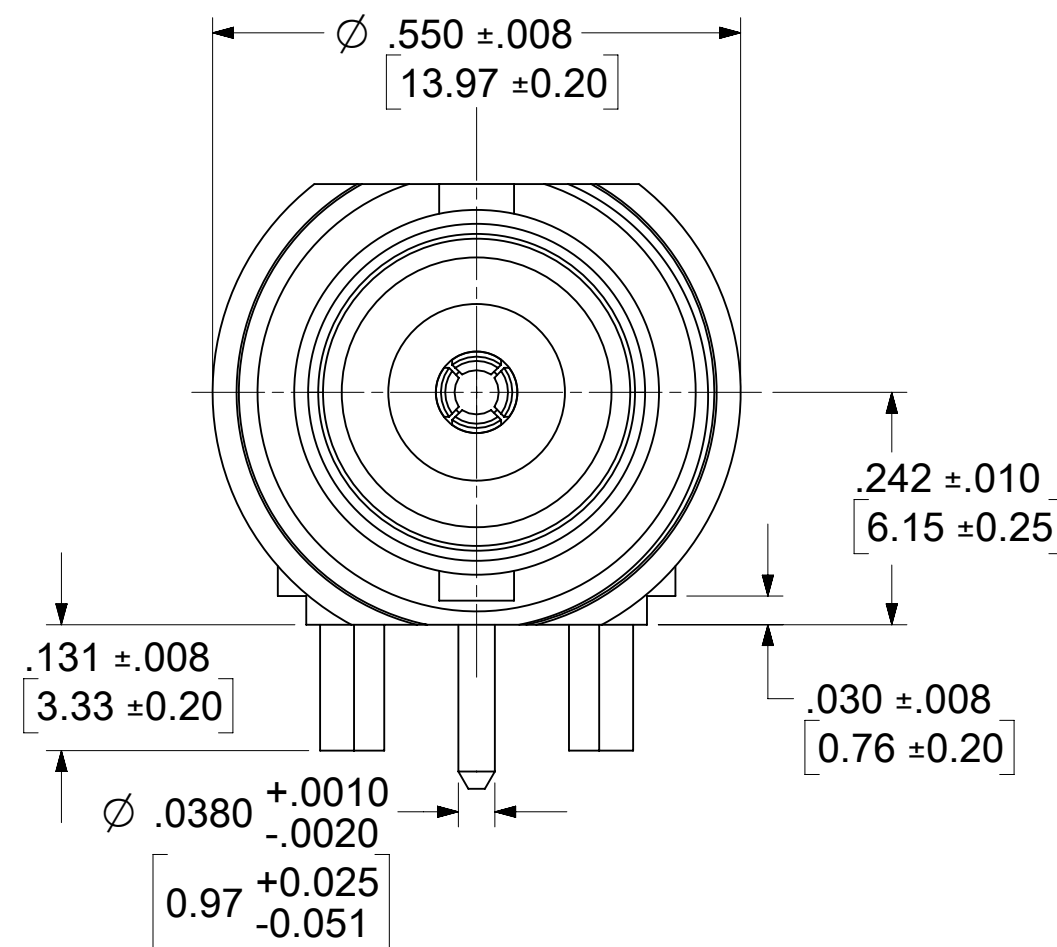
LOCK WASHER: PHOSPHOR BRONZE
PLATED NICKEL

MECHANICAL CHARACTERISTICS:

FORCE TO ENGAGE & DISENGAGE:
AXIAL: 5 lbs TYP; RADIAL: 2.5 in-lb MAX
CONNECTOR DURABILITY: 500 CYCLES MIN

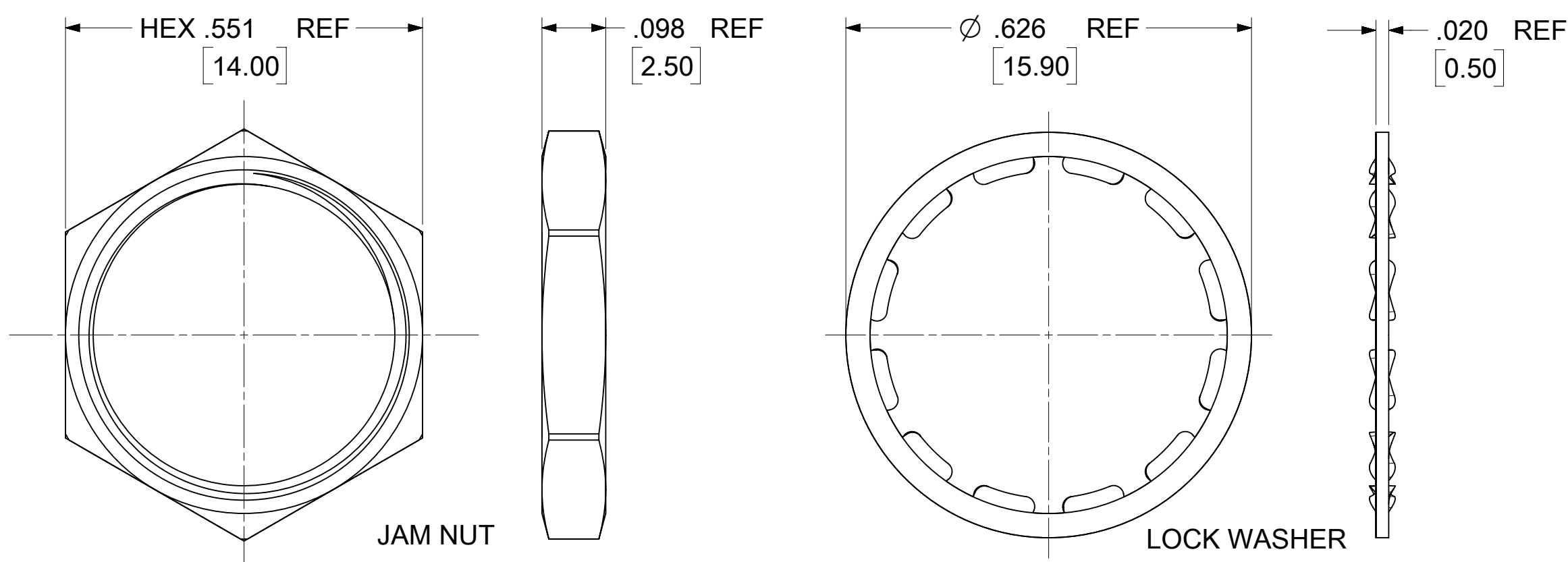
ELECTRICAL CHARACTERISTICS:

NOMINAL IMPEDANCE: 50Ω
FREQUENCY RATING: DC TO 4 GHz
VSWR: 1.25 TYP
INSERTION LOSS: 0.12√F(GHz) dB TYP



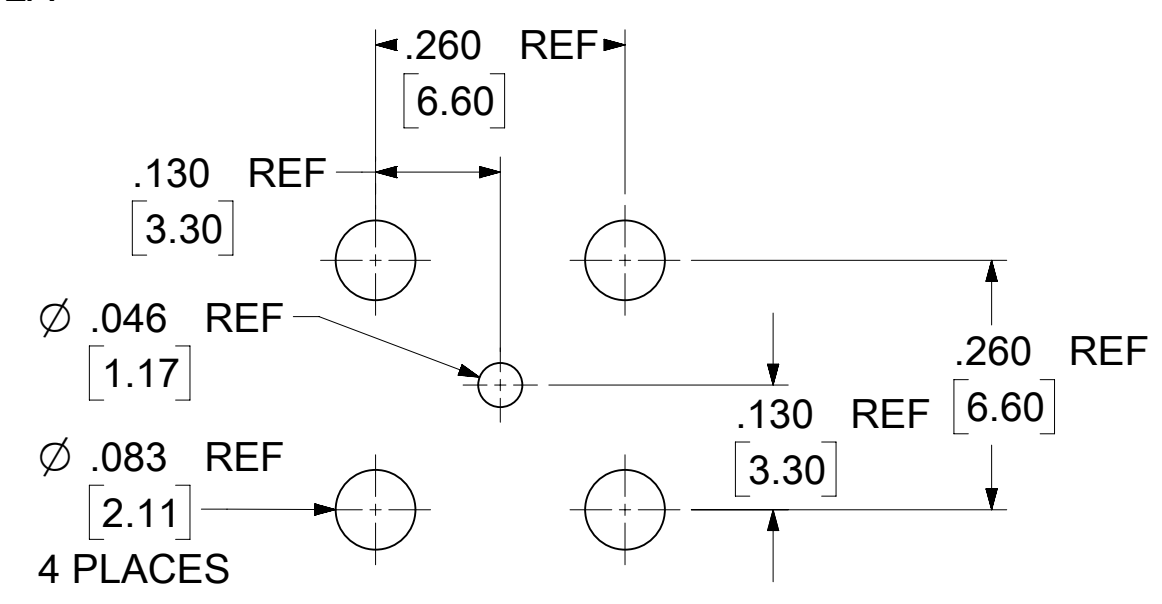
RECOMMENDED PANEL CUTOUT

1/2-28 UNEF-2A



JAM NUT

LOCK WASHER



RECOMMENDED PCB HOLE PATTERN

73171-1362	INCLUDED	NICKEL	895420590
73171-1361	INCLUDED	TIN	895420590
73171-1360	NOT INCLUDED	TIN	895420580
PART NO.	WASHER/NUT	BODY PLATING	PACKING SPEC

PS-89675-1030	ELEC/MECH PERFORMANCE
MIL-STD-348A, FIG. 301.2	INTERFACE
SPECIFICATION	DESCRIPTION

DOCUMENT STATUS	P1	RELEASE DATE	2023/03/29 03:23:45
-----------------	----	--------------	---------------------

THIS DRAWING CONTAINS INFORMATION THAT IS PROPRIETARY TO MOLEX ELECTRONIC TECHNOLOGIES, LLC AND SHOULD NOT BE USED WITHOUT WRITTEN PERMISSION

DIMENSION UNITS	SCALE	CURRENT REV DESC: ADD ELECTRICAL & MECHANICAL CHARACTERISTICS PER EWR #15500-C	molex		
INCH/MM	NTS				
GENERAL TOLERANCES (UNLESS SPECIFIED)		EC NO: 743585	BNC JACK, R/A, PCB 50 OHMS, BULKHEAD BNC-J/PCB		
ANGULAR TOL	± 2.0°	DRWN: RYEH 2023/03/21			
4 PLACES	±	CHK'D: YCHENG 2023/03/29	PRODUCT CUSTOMER DRAWING		
3 PLACES	±	APPR: YCHENG 2023/03/29			
2 PLACES	±	INITIAL REVISION:	DOCUMENT NUMBER		
1 PLACE	±	DRWN: AROBERTSON 2005/01/25			
0 PLACES	±	APPR: JWIENER 2005/01/25	SD-73171-136		
DRAFT WHERE APPLICABLE MUST REMAIN WITHIN DIMENSIONS		THIRD ANGLE PROJECTION			
			C-SIZE	73171	SEE TABLE
					CUSTOMER
					GENERAL MARKET
					SHEET NUMBER
					1 OF 1