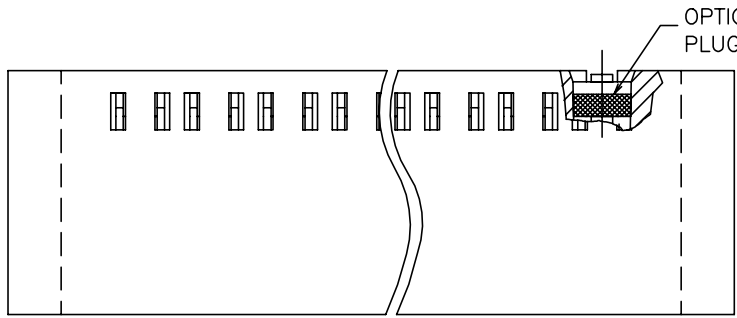
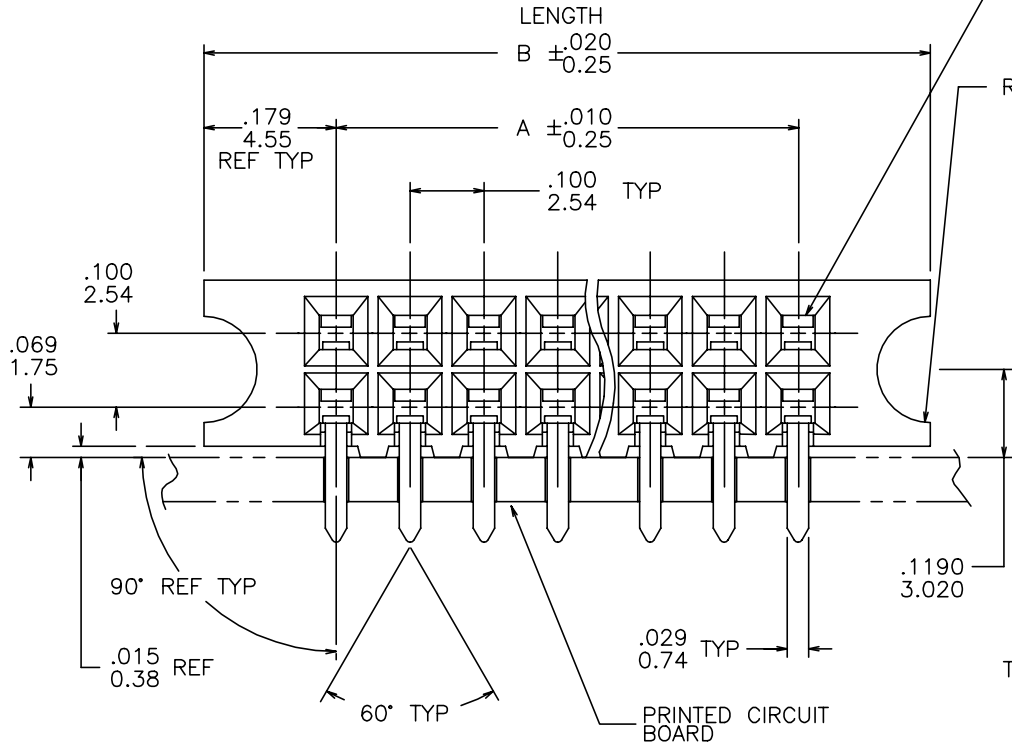


PRODUCT NO.
SEE TABLE

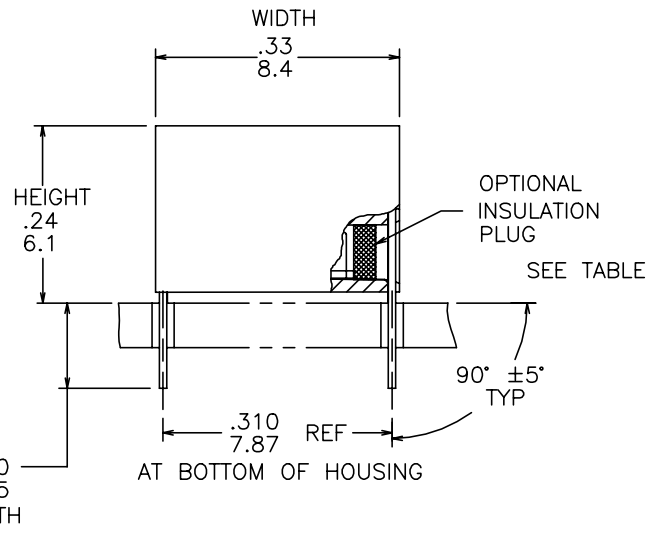


OPTIONAL INSULATION
PLUG



$\frac{.046}{1.17}$ SQUARE CONTACT
OPENING TYP

R $\frac{.072}{1.83}$ $\frac{+.003}{+0.08}$ $\frac{-.002}{-.05}$ TYP



mat'l. code -		surface ISO 1302 ✓		tolerance ISO 406 ISO 1101		projection ⊕		product family CARD CONNECTOR	
l/tecn no/dr		date		tolerances unless otherwise specified		title			
A	NEW	ZK	10/25/13	angles	linear	$\frac{.XX \pm .01}{.XX \pm .03}$	INCH/MM	GUIDE PIN VERT. CARD CONN. ASS'Y	
				0°±2°		$\frac{.XXX \pm .008}{.XXX \pm .020}$			
						$\frac{.XXXX \pm .0040}{.XXX \pm 0.100}$	scale 4:1		
				dr	ZK HU	10/25/13	FCI	dwg no sheet 1 of 3 size	
				engr	ZK HU	10/25/13		10127812 A3	
				chr	RICK BIAN	10/25/13			
				appd	RICK BIAN	10/25/13		type Product Customer Drawing	
sheet index	revision	A	A	A					
	sheet	1	2	3					

FCI
FCIconnect.com
Copyright FCI

PRODUCT NO.
SEE TABLE

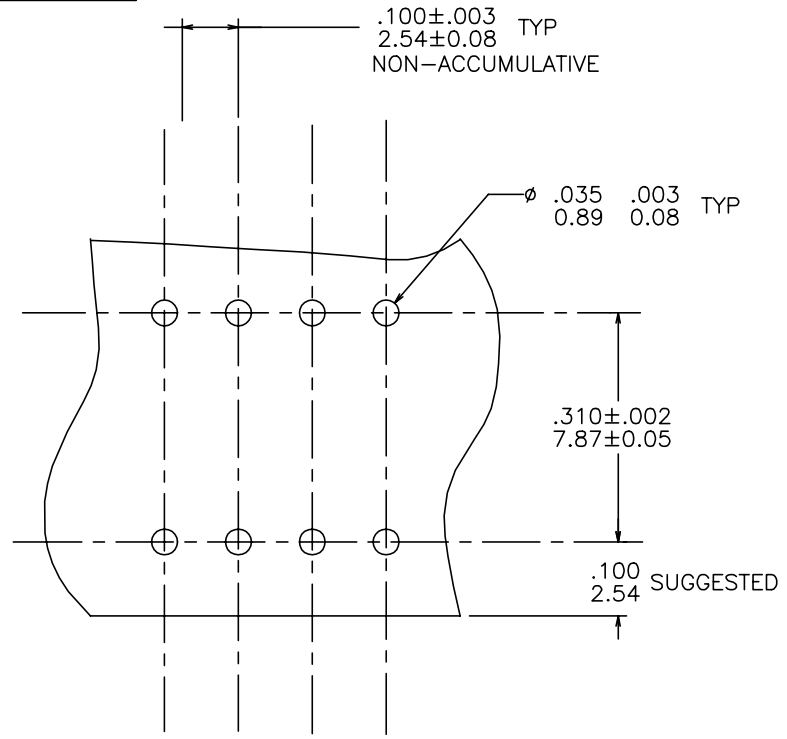


FIGURE 1

NOTES:

1. HOUSING MATERIAL:
FILLED HIGH TEMPERATURE NYLON
PER UL 94V-0
COLOR: BLACK
2. TERMINAL MATERIAL:
BODY: BRASS. .010/0.25 THICK
SPRING: BE-CU. HEAT TREATED
BODY PLATING DUPLEX :
30 MICROINCH/0.76 MICRON GOLD
OVER 50 MICROINCH/1.27 MICRON NICKEL
IN CONTACT AREA
SOLDER TAIL : 100u"/2.54um PURE TIN MIN
OVER 050u"/1.27um NICKEL
SPRING PLATING: GOLD FLASH

3. MARK "FCI", FCI PART NUMBER AND DATE CODE.
LEGIBLE ON TUBE LABEL.
4. APPLICATION INFORMATION:
A. RECOMMENDED MOUNTING HOLE
PATTERN IS SHOWN IN FIGURE "1"
B. ALL MATING PINS TO BE .025/.64 SQUARE ON
TRUE CENTER OF GIVEN TERMINAL
SPACINGS WITHIN .015/0.38 DIA.
C. SUGGESTED MATING PIN LENGTH
.350±.020/8.89±0.51
5. .003/0.08 THICK TERMINAL SPRING.
6. PACKAGING: STANDARD 24" LONG TUBES.
7. ADD "LF" SUFFIX AT THE END OF PART NUMBER FOR
LEAD FREE OPTION.
8. THIS PRODUCT MEETS EUROPEAN UNION DIRECTIVES AND OTHER
COUNTRY REGULATION AS DESCRIBED IN GS-22-008.
9. THE HOUSING WILL WITHSTAND EXPOSURE TO 260°C PEAK TEMPERATURE
FOR 15 SECONDS IN A WAVE SOLDER APPLICATION WITH A 1.5mm
MINIMUM THICK CIRCUIT BOARD. SEE APPLICATION NOTES/PROCEDURES
IF THEY ARE AVAILABLE.

FCI
FCIconnect.com

Copyright FCI

mat'l. code		surface		tolerance		projection		product family	
-		ISO 1302 ✓		ISO 406 ISO 1101				CARD CONNECTOR	
l	tr	ec	n	o	d	r	date	title	
tolerances unless otherwise specified								INCH/MM	
A				angles	linear	$\frac{.XX\pm.01}{.XX\pm.03}$ $\frac{.XXX\pm.008}{.XXX\pm.020}$ $\frac{.XXXX\pm.0040}{.XXXX\pm.0100}$		GUIDE PIN VERT. CARD CONN. ASS'Y	
								scale 4:1	
				dr	ZK HU	10/25/13		dwg no sheet 2 of 3 size	
				engr	ZK HU	10/25/13		10127812 A3	
				chr	RICK BIAN	10/25/13		type Product Customer Drawing	
				appd	RICK BIAN	10/25/13			
sheet	revision								
index	sheet								

PRODUCT NO. NOTE 9	NO. OF POS.	A DIM	B DIM	INSUL. PLUG
10127812-025LF	2X25	2.400/60.96	2.758/70.05	NO
10127812-030LF	2X30	2.900/73.66	3.258/82.75	NO
10127812-530LF	2X30	2.900/73.66	3.258/82.75	YES



FCIconnect.com

Copyright FCI

mat'l. code		surface		tolerance		projection		product family	
-		ISO 1302 ✓		ISO 406 ISO 1101				CARD CONNECTOR	
tr/ecn no/dr		date		tolerances unless otherwise specified					
A				angles	line	XX±.01/XX±0.3	INCH/MM	title	
				0°±2°		XXX±.008/XXX±0.20		GUIDE PIN	
						XXXX±.0040/XXX±0.100	scale 4:1	VERT. CARD CONN. ASS'Y	
				dr	ZK HU	10/25/13			dwg no
				engr	ZK HU	10/25/13			sheet 3 of 3
				chr	RICK BIAN	10/25/13			size
				appd	RICK BIAN	10/25/13		10127812	A3
sheet index		revision sheet		type Product Customer Drawing					