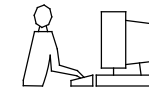
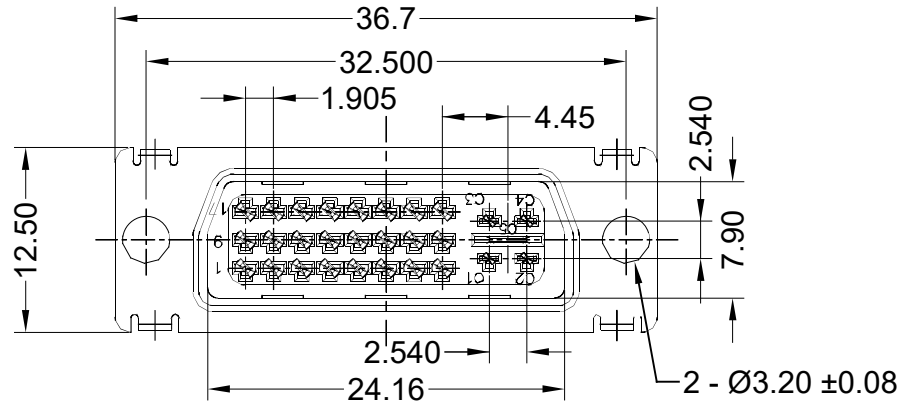


TOLERANCE UNLESS OTHERWISE SPECIFIED				
.X	±0.30	.X°		±3.00°
.XX	±0.25	.XX°		±1.00°
.XXX	±0.150	.XXX°		±0.500°

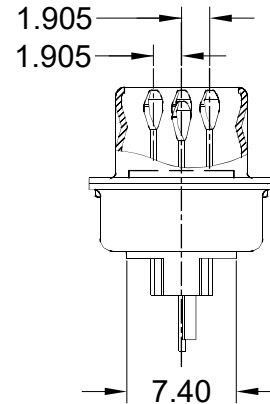
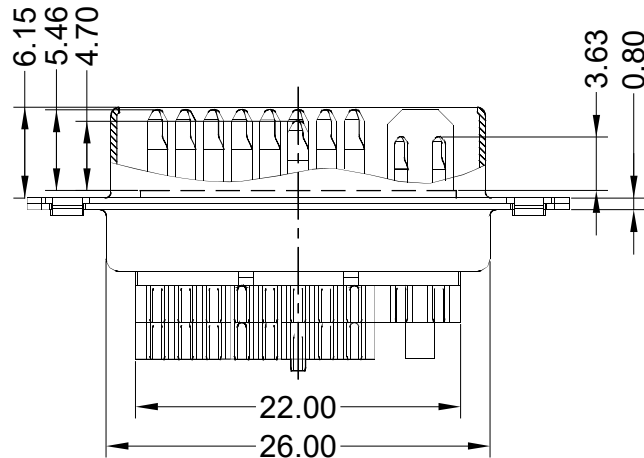
THIS IS A C.A.D. GENERATED DRAWING  
DO NOT MAKE MANUAL REVISIONS TO MASTER.



ISSUE NUMBER	
ORIGINAL	①



**NOTE**  
**MATERIAL**  
 INSULATOR: SEE TABLE  
 CONTACTS: BRASS  
 SHELL: SPCD  
 CONTACT PLATING: GOLD-FLASH PLATING OVER NICKEL  
**ELECTRICAL SPECIFICATION**  
 CURRENT RATING: 1.5A  
 VOLTAGE RATING: 40V  
 CONTACT RESISTANCE: 30mΩ MAX  
 INSULATION RESISTANCE: 1000MΩ MIN 500V DC  
 DIELECTRIC WITHSTANDING VOLTAGE: 500V AC  
**ENVIRONMENTAL**  
 OPERATING TEMPERATURE: -20°C TO +80°C



PART NO.	MATERIAL
B11-029-222-111	PBT + 30%GF BLACK
B11-029-222-211	PBT + 30%GF WHITE



THIS SERIES FULLY CONFORMS TO  
THE EUROPEAN UNION DIRECTIVES  
2011/65/EU FOR RoHS COMPLIANCY.



YOUR CONNECTION TO QUALITY & SERVICE

EDAC INC  
TORONTO, ONTARIO  
CANADA

THESE DRAWINGS AND SPECIFICATIONS  
ARE THE PROPERTY OF EDAC INC., AND  
SHALL NOT BE REPRODUCED, OR COPIED  
OR USED AS THE BASIS FOR THE  
MANUFACTURE OR SALE OF APPARATUS  
WITHOUT WRITTEN PERMISSION.

### DVI MALE, 29 PINS, SOLDER-CUP

ACAD REFERENCE NO.: B11-029-222-111

DRAWN: P.M. DATE: AUG. 11/2020

CHECKED: R.S.M. DATE: AUG. 11/2020

SCALE: N.T.S. SHEET 1 OF 1

DRAWING NUMBER: B11-029-222-111 ISSUE 1

PART NUMBER: SEE TABLE