

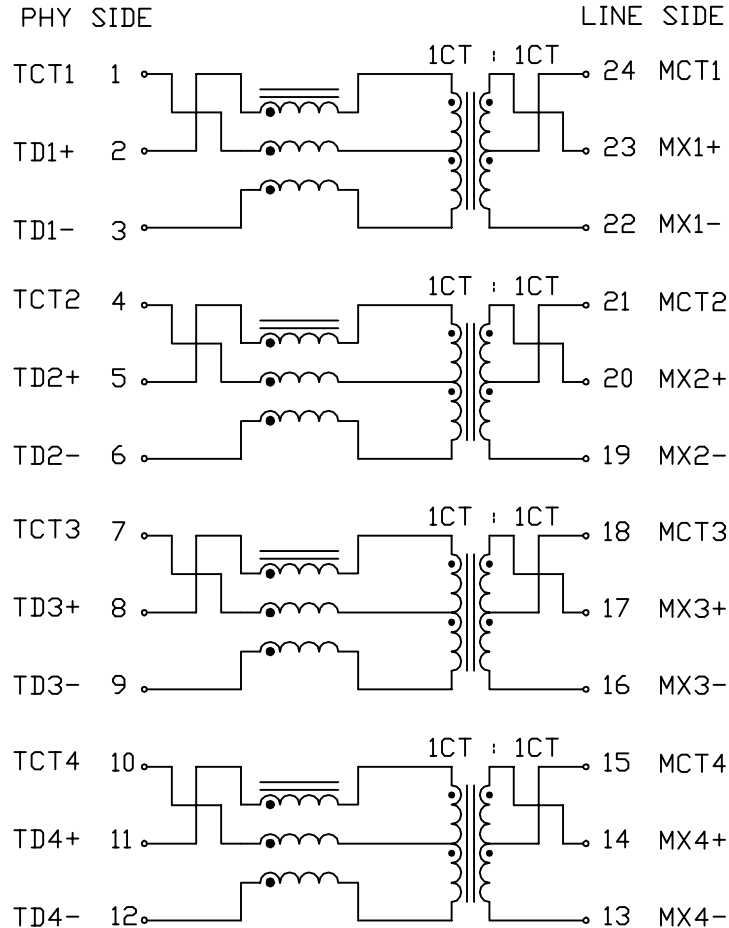
THE INFORMATION CONTAINED HEREIN IS CONSIDERED "PROPRIETARY" TO BEL FUSE INC. AND SHALL NOT BE COPIED, REPRODUCED OR DISCLOSED WITHOUT THE WRITTEN APPROVAL OF BEL FUSE INC.

RoHS



ELECTRICAL CHARACTERISTICS @25°C

SCHEMATIC



URNS RATIO

<2-1-3> : <23-24-22>
 <5-4-6> : <20-21-19>
 <8-7-9> : <17-18-16>
 <11-10-12> : <14-15-13>

1CT : 1CT ±2%
 1CT : 1CT ±2%
 1CT : 1CT ±2%
 1CT : 1CT ±2%

POLARITY

PER DOT CONVENTION

DCL

-40°C TO 85°C
 -40°C TO 85°C

100kHz, 100mV
 180uH MIN WITH 8mA DC BIAS
 120uH MIN WITH 23mA DC BIAS

INTERWINDING CAPACITANCE, C_{ww}

@1MHz, 20mV
 30pF MAX

PARAMETER		MAGNITUDE (IN dB)	FREQUENCY (IN MHZ)	
			START	END
INSERTION LOSS	SDD12 , SDD21	-0.004<f/MHz>-0.4 MAX	1	150
RETURN LOSS	SDD11 , SDD22	-20 MIN	1	40
		-20+15LOG<f/40MHz> MIN	40	150
ALIEN NEAR END CROSSTALK	SDDXY'	-46+7LOG<f/125MHz> MIN	1	150
NEAR END CROSSTALK	SDDXY	-35 MIN	1	40
		-35+15LOG<f/40MHz> MIN	40	150
MODE CONVERSION	SDC12	-35 MIN	1	40
		-35+17LOG<f/40MHz> MIN	40	150
	SDC21	-30 MIN	1	40
COMMON MODE REJECTION	SCC21	-30+11LOG<f/40MHz> MIN	40	150
		-25 MIN	1	150

BALANCED DC LINE CURRENT

1A MAX @57VDC CONTINUOUS

HIPOT

1500 V_{rms}

DESIGNED FOR USE IN 1G/2.5G 802.3BT APPLICATIONS.

ORIGINATED BY	DATE
Alice Pang	2019-11-12
DRAWN BY	DATE
ZC Guo	2019-11-12

TITLE
ELECTRICAL SPECIFICATION

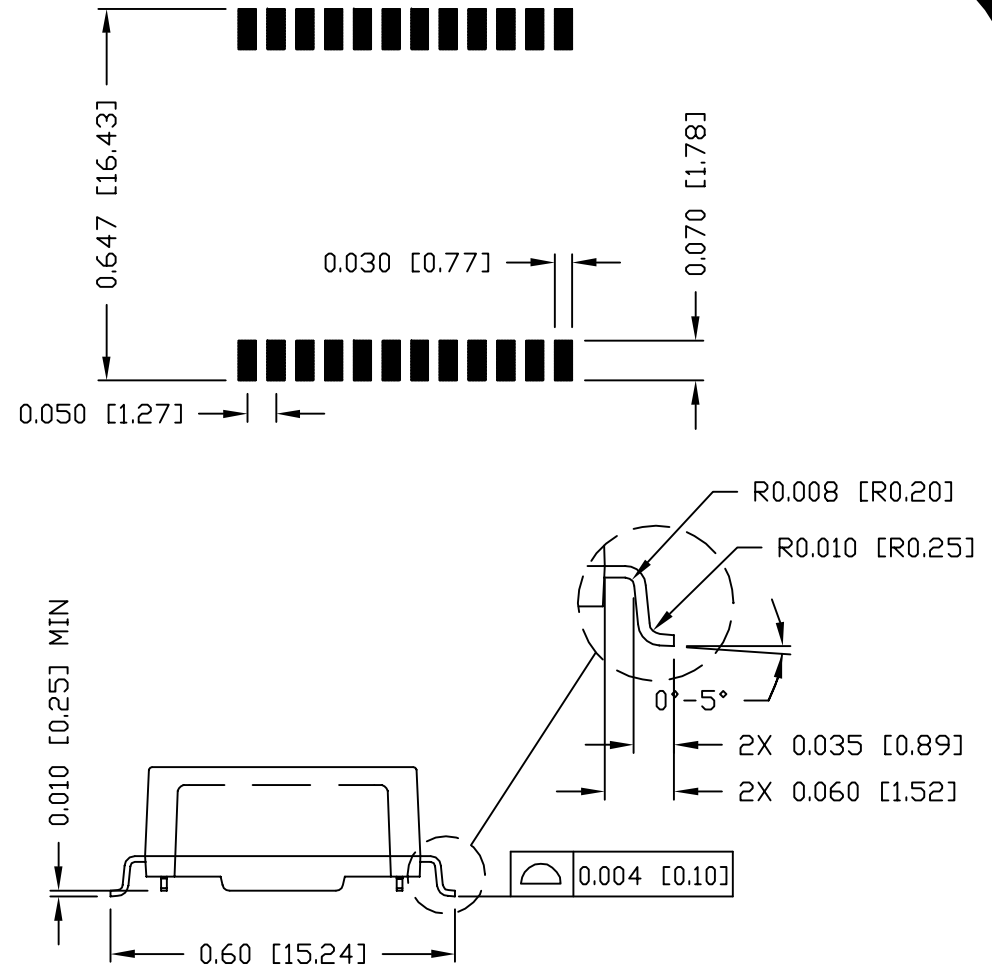
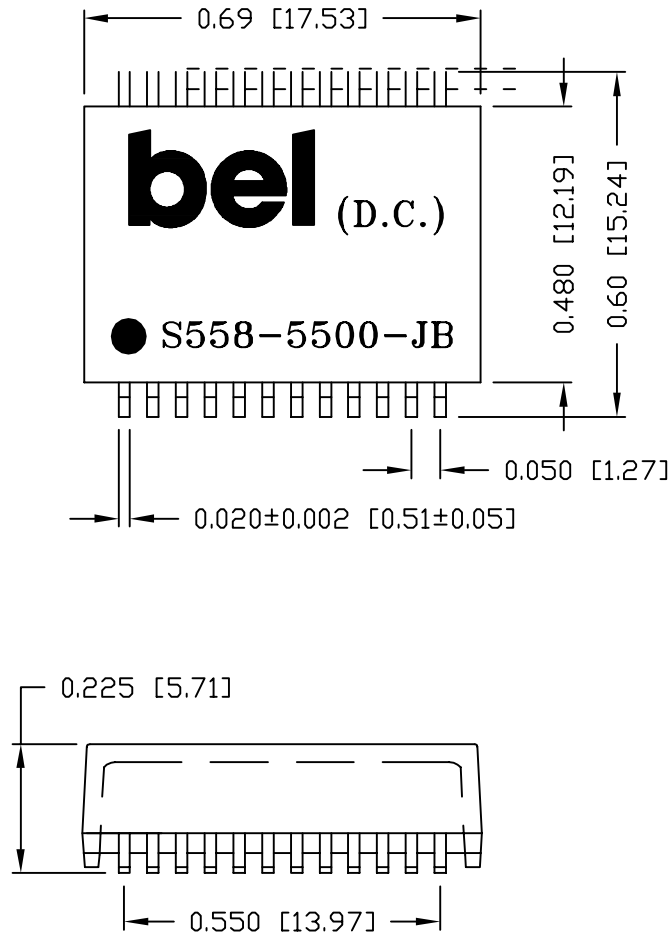
PART NO. / DRAWING NO.
S558-5500-JB
FILE NAME
S5585500JBPA.DWG

STANDARD DIM.	[] METRIC DIM. AS REF.
TOL. IN INCH	UNIT : INCH [mm]
.X	SCALE : N/A
.XX	SIZE : A4
.XXX	

REV. : PA	PAGE : 2
-----------	----------

THE INFORMATION CONTAINED HEREIN IS CONSIDERED "PROPRIETARY" TO BEL FUSE INC. AND SHALL NOT BE COPIED, REPRODUCED OR DISCLOSED WITHOUT THE WRITTEN APPROVAL OF BEL FUSE INC.

SUGGESTED PCB PAD LAYOUT



NOTES:

1. STANDARD MARKING REFER TO DOC. HAND-WORK-04.
2. PACKAGE CODE: "RQS001".

ORIGINATED BY Lawrence Tsang	DATE 2019-11-12	TITLE MECHANICAL OUTLINE	PART NO. / DRAWING NO. S558-5500-JB	STANDARD DIM. TOL. IN INCH	[] METRIC DIM. AS REF.	REV. : PA	PAGE : 3
DRAWN BY ZC Guo	DATE 2019-11-12		FILE NAME S5585500JBPA.DWG	.X .XX ±0.01 .XXX ±0.005	UNIT : INCH [mm] SCALE : N/A	 POWER PROTECT CONNECT	
					SIZE : A4		