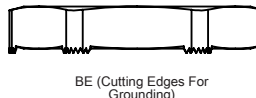


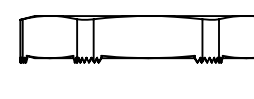
4

3

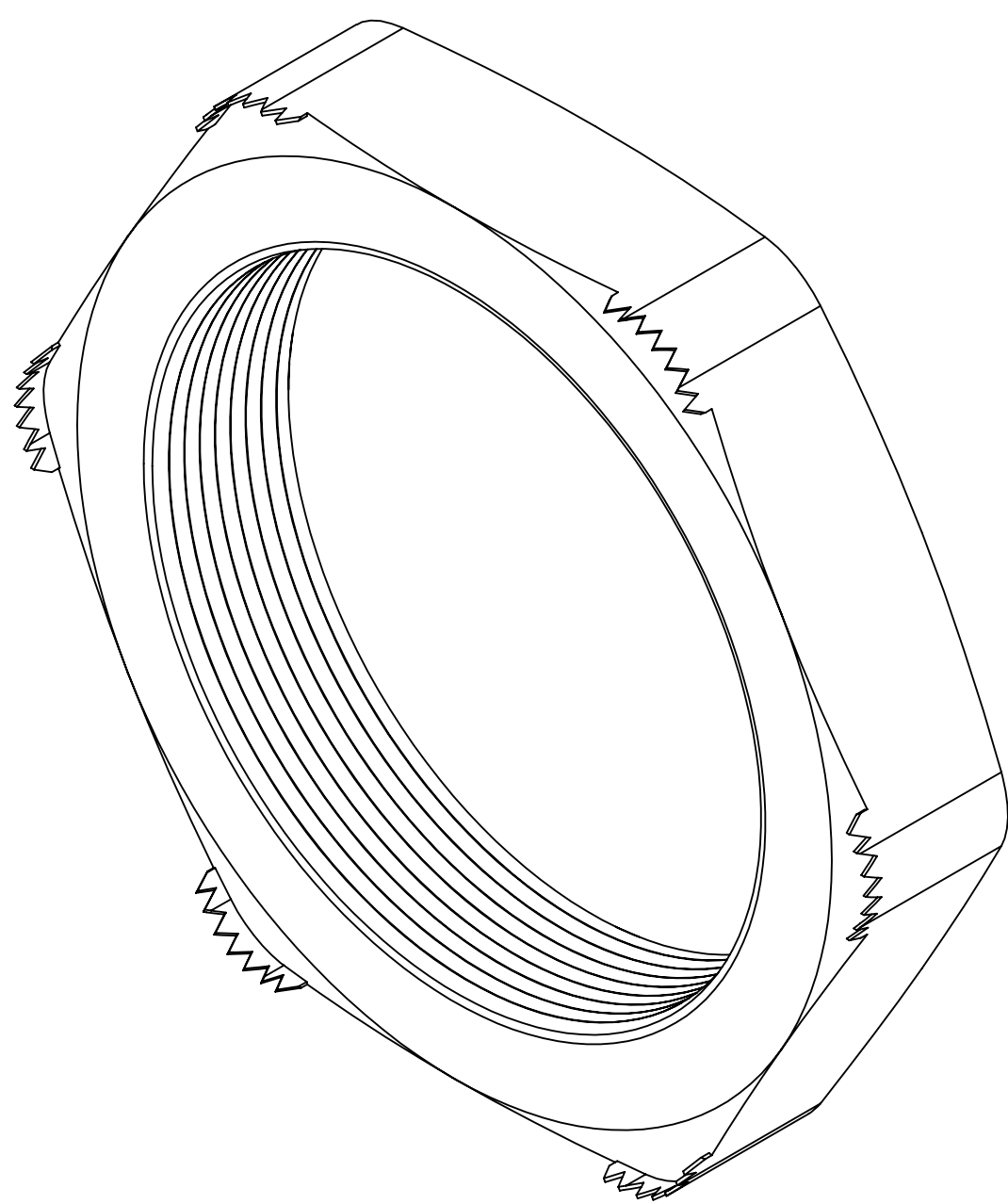
2

1

PART NUMBERS 	THREAD TYPE AND SIZE For thread specs see page 29	DIMENSIONS (INCHES)	
		G Thickness	H Wrenching Flats
NM-12-BE NP-07-BE	M12 x 1,5 PG 7 / 1/4" NPT	.11 (3) .11 (3)	.59 (15) .59 (15)
NP-09-BE NM-16-BE	PG 9 M16 x 1,5	.11 (3) .11 (3)	.71 (18) .75 (19)
NP-11-BE NM-20-BE	PG 11 M20 x 1,5	.12 (3) .12 (3)	.83 (21) .94 (24)
NP-13-BE NN-13-BE	PG 13 1/2" NPT	.12 (3) .12 (3)	.91 (23) .94 (24)
NP-16-BE	PG 16	.12 (3)	1.02 (26)
NM-25-BE	M25 x 1,5	.14 (3.5)	1.18 (30)

PART NUMBERS 	THREAD TYPE AND SIZE For thread specs see page 29	DIMENSIONS (INCHES)	
		G Thickness	H Wrenching Flats
NP-21-BE NM-32-BE	PG 21 M32 x 1,5	.14 (3.5) .20 (5)	1.26 (32) 1.42 (36)
NP-29-BE NM-40-BE	PG 29 M40 x 1,5	.16 (4) .20 (5)	1.61 (41) 1.81 (46)
NP-36-BE NM-50-BE	PG 36 M50 x 1,5	.20 (5) .20 (5)	2.01 (51) 2.01 (51)
NP-42-BE NP-48-BE	PG 42 PG48	.20 (5) .24 (6)	2.36 (60) 2.52 (64)
NM-63-BE	M63 x 1,5	.24 (6)	2.76 (70)

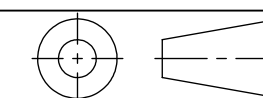
See pages 18-19 for the EMI/RFI Product Line. To specify fittings with Locking Nut in one part number, add "-N" to the connector number. **Example:** CD13NA-BE-N (product will still be invoiced separately).



NOTES:

- 1) GENERAL DIMENSIONS DRAWINGS.
- 2) DIMENSIONS [] ARE IN INCHES.
- 3) DIMENSIONS NOTED ARE FOR REFERENCE ONLY.

Third angle projection



SEALCON

7374 S. EAGLE STREET
CENTENNIAL, CO 80112-4221 USA
TEL: +1-303-699-1135
TOLL FREE: +1-800-456-9012
E MAIL: info@sealconusa.com,
WEBSITE: www.sealconusa.com

hummel

4

3

2