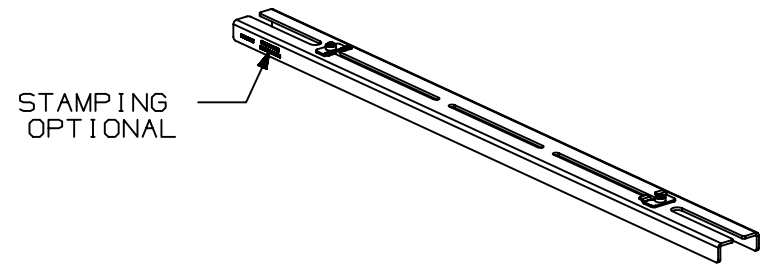
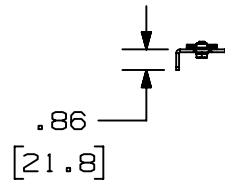
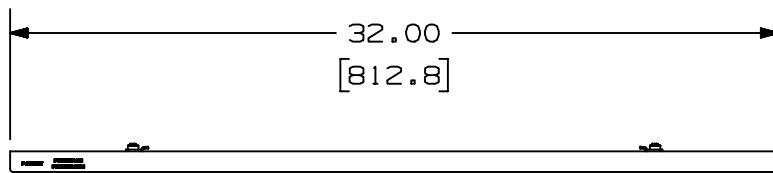
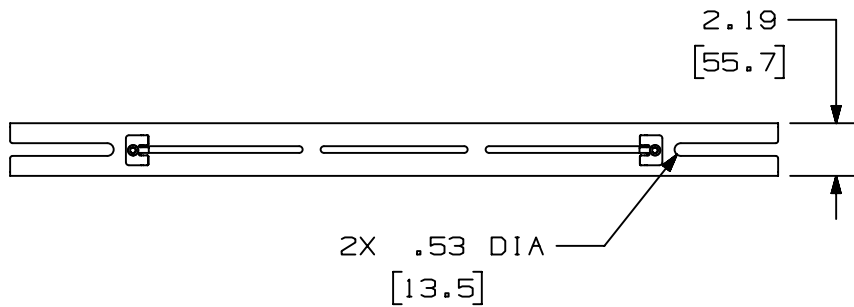


THIS COPY IS PROVIDED ON A RESTRICTED BASIS AND IS NOT TO BE USED IN ANY WAY DETRIMENTAL TO THE INTERESTS OF PANDUIT CORP.

PANDUIT PART NUMBER	WEIGHT
FR12TB2412 FR12TB2412M	4.49 LB/EACH (2037g/EACH)

NOTES:

- SEE CURRENT CATALOG FOR ADDITIONAL PART SUFFIXES TO INDICATE PACKAGE QUANTITY.
- THE FIBERRUNNER 12x4 QUIKLOCK TRAPEZE BRACKET FOR 24" WIDE CABLE PATHWAYS IS USED TO SUPPORT THE FIBERRUNNER 12x4 CABLE ROUTING SYSTEM BETWEEN TWO (2) SECTIONS OF NEW 1/2" (M12) THREADED ROD THAT ARE 24" (609.6) - 31.5" (800.1) APART.
- THE FIBERRUNNER 12x4 QUIKLOCK TRAPEZE BRACKET FOR 24" WIDE CABLE PATHWAYS - 1/2" (M12) THREADED ROD INCLUDES:  
ONE (1) BRACKET ASSEMBLY,  
TWO (2) 1/2 CLAMP PLATES,  
FOUR (4) 1/2 HELICAL SPRING LOCKWASHERS,  
FOUR (4) 1/2-13 HEAVY HEX NUTS (FR12TB2412 ONLY),  
FOUR (4) M12x1.75 HEX NUTS (FR12TB2412M ONLY),  
ONE (1) 1/4-20 T-BOLT,  
ONE (1) 1/4-20 HEX KEPS NUT.
- FINISH COLOR: BLACK (EXCEPT FOR HARDWARE)
- DIMENSIONS IN PARENTHESES ARE IN METRIC.



REV	DATE	BY	CHK	APR	DESCRIPTION	ECN
00B	9/9/19	MEX-JAGC	FWI	FWI	A. "STAMPING OPTIONAL" LABEL ADDED SEE PREVIOUS REVISION FOR HISTORY	V09002CN/07
R	10/21/08	MSO	SL		RELEASED TO PRODUCTION	39701-48

TITLE FIBERRUNNER 12x4 QUIKLOCK TRAPEZE BRACKET FOR 24" WIDE CABLE PATHWAYS - 1/2" (M12) THREADED ROD					
CUSTOMER DRAWING					
ITEM REVISION NAME D39701CS/00			<b>PANDUIT</b>		
DATASET FILE NAME D39701CS_DC/00B					
DRAWING NUMBER: 39701-48					MATERIAL: N/A
DRAWN BY MSO		DATE 10/21/08		THIRD ANGLE PROJECTION	
CHK SL		SCALE NONE		SHT 1 OF 1	
REV		DATE		BY	
MSO		10/21/08		SL	
ECN		SCALE		SIZE	
V09002CN/07		NONE		A	

D10100DA/20