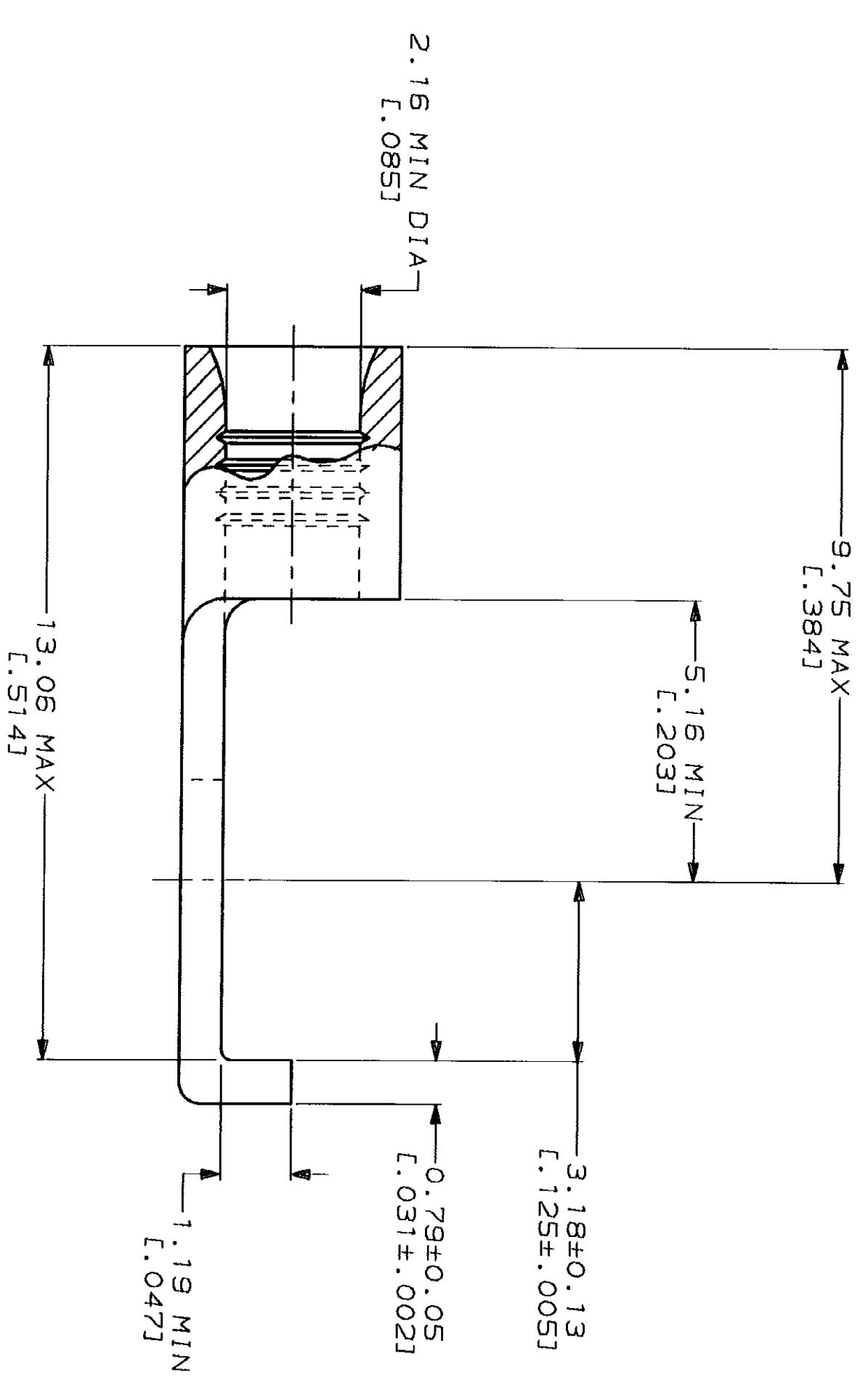


**METPRIG**  
DIMENSIONS LISTED IN mm [ INCHES ]

<b>AMP</b> WIRE RANGE 16-14 AWG SOLID OR STRANDED	<b>UL</b> E13288 Listed 16-14 AWG SOLID OR STRANDED
<b>LR7189</b> Certified 16-14 AWG SOLID OR STRANDED	MILITARY P/N AND CLASS NOT APPLICABLE

△ STAMP AMP 16-14\* APPROX AS SHOWN



100	LOOSE PIECE, BOX	8-320855-1
5000	ON TAPE	2-320855-1
---	LOOSE PIECE	320855
	PACKAGING TYPE	PART NO

**AMP INCORPORATED**  
**CUSTOMER SERVICE SYSTEMS**

FOR ADDITIONAL  
PRODUCT INFORMATION OR  
COPIES OF DRAWINGS  
AND TECHNICAL DOCUMENTS  
1-800-522-6752

FOR APPLICATION  
TOOLING INFORMATION  
1-800-722-1111

MAX RECOMMENDED OPERATING  
TEMPERATURE:  
170°C MAX

FOR ORDER ENTRY  
1-800-526-5142

VOLTAGE RATING:  
NOT APPLICABLE

WIRE CROSS SECTIONAL AREA RANGE:  
1.04-2.62mm<sup>2</sup> [2,050-5,180] CIR MILS  
SOLID OR STRANDED

FINISH  
TIN PLATE  
0.00254 [L.000100] MIN  
THK PER MIL-T-10727

DR 4-8-93  
TA BRINKMAN  
CHK 4-8-93  
DA PATTERSON  
APPD 4-8-93  
DE MILLER  
APPD 4-8-93  
JL MECKLEY  
PRODUCT SPEC

DO NOT SCALE PRINT.  
UNLESS SPECIFIED  
DIMENSIONS IN mm [ INCHES ]  
TOLERANCES ON:  
2 PLC DEC # -  
3 PLC DEC # -  
ANGLES ± -  
MATERIAL  
COPPER PER  
ASTM B-152  
ANNEALED

AMP Incorporated  
Harrisburg, PA 17105-3608

TERMINAL, FLANGED  
SPADE, SOLISTRAND™

SIZE  
CAGE CODE  
DRAWING NO  
SCALE 10:1

CUSTOMER DRAWING