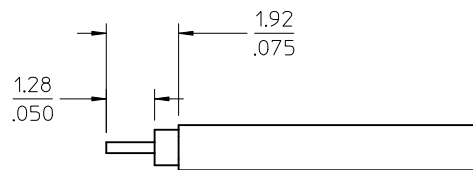
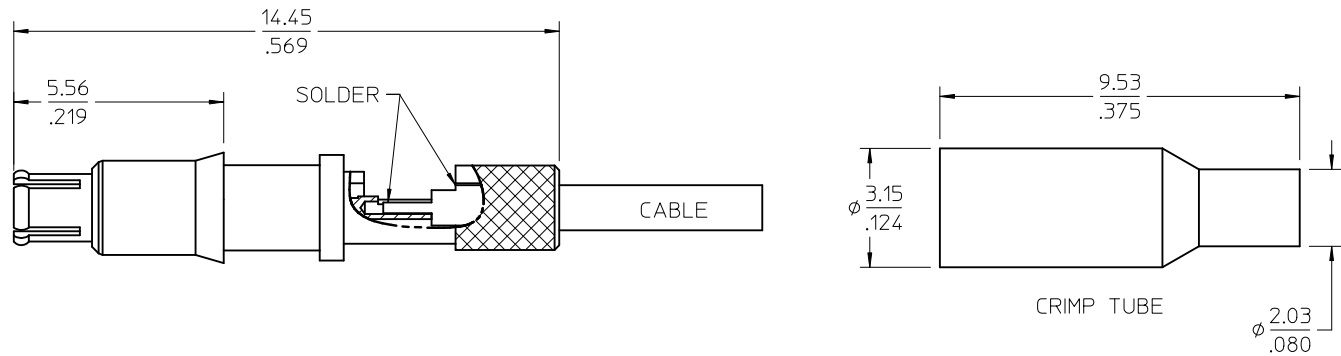
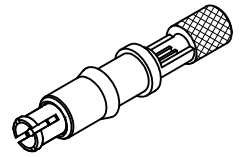
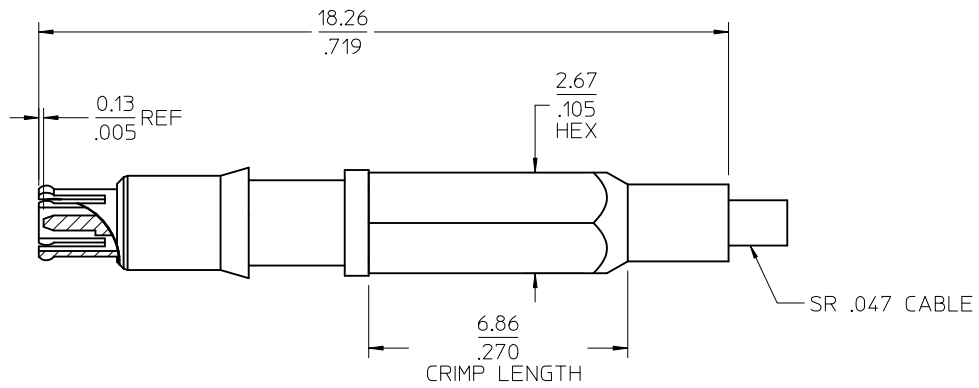


MATERIALS AND FINISHES:

BODY, CONTACT, CRIMP TUBE BRASS
PLATED GOLD

OUTER CONTACT BERYLLIUM COPPER
PLATED GOLD

INSULATOR: TEFLON



RECOMMENDED STRIP DIMENSION

PART # 73413-6260

PS-89675-3600	SSMCX PLUG
SPECIFICATION	DESCRIPTION

CHG: NEW RELEASE EC NO: URF2010-0387 DRW:SSHAH 2010/01/04 CHKD:ROBERTSON 2010/01/04 APPR:JWIENER 2010/01/04	QUALITY SYMBOLS ▽=0 ▽=0	GENERAL TOLERANCES (UNLESS SPECIFIED) mm INCH 4 PLACES ± --- ± --- 3 PLACES ± --- ± --- 2 PLACES ± --- ± --- 1 PLACE ± --- ± --- ANGULAR ± 2 °	DIMENSION STYLE MM/IN	SCALE	DESIGN UNITS METRIC	THIRD ANGLE PROJECTION
			DRAWN BY SSS	DATE 2009/12/30	TITLE SSMCX PLUG STR SR .047 50 OHMS GANGED EWR-4284 SSMCX-PC	MOLEX INCORPORATED
A	DESCRIPTION	DRAFT WHERE APPLICABLE MUST REMAIN WITHIN DIMENSIONS	MATERIAL NO. 734136260	DOCUMENT NO. SD-73413-626		
			SIZE C	THIS DRAWING CONTAINS INFORMATION THAT IS PROPRIETARY TO MOLEX INCORPORATED AND SHOULD NOT BE USED WITHOUT WRITTEN PERMISSION		