

4

3

2

1

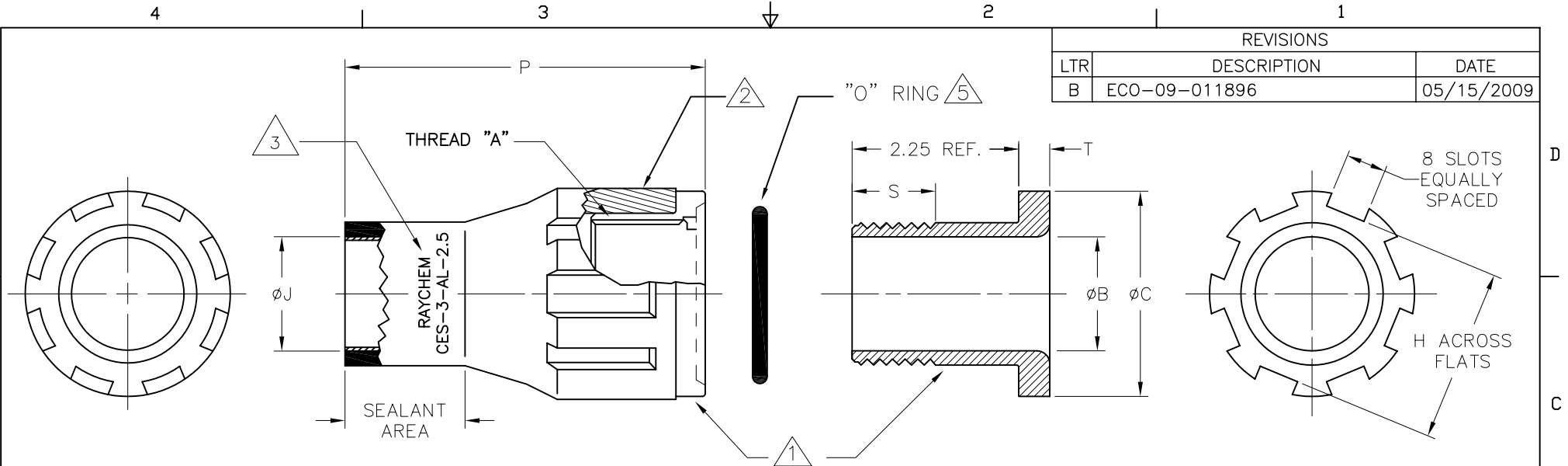
REVISIONS		
LTR	DESCRIPTION	DATE
B	ECO-09-011896	05/15/2009

D

C

B

A



PART DESCRIPTION	"A" THREAD	ØB MIN	ØC REF	H REF	ØJ		P REF REC	S REF	T REF	PANEL THK △4	DRILL HOLE DIA. (REF.)
					MIN EXP	MAX REC					
CES-3-AL-2.5	1 3/8-12 UNF	1.10 [27,94]	1.90 [48,26]	1.65 [41,9]	1.20 [30,48]	.50 [12,7]	3.55 [90,17]	1.25 [31,2]	.31 [7,88]	1.5 [38]	1.38 [35,1]

NOTES:

- △1. MATERIAL: ALUMINUM 6061-T6 WITH FINISH OF HARD ANODIZE PER MIL-A-8625F, TYPE III, CLASS 2, DYED BLACK AND NON-REFLECTIVE COATING.
- △2. BOOT: HEAT SHRINKABLE, MATERIAL IN ACCORDANCE WITH -3 POLYOLEFIN
- △3. PART TO BE MARKED AS SHOWN.
- △4. THIS PART IS DESIGNED TO FIT THROUGH A PANEL OR BULKHEAD WITH A WALL THICKNESS (REF.) AS INDICATED IN TABLE.
- △5. O-RING MATERIAL: NITRILE (BUNA-N)

If this document is printed it becomes uncontrolled. Check for the latest revision

CUSTOMER DRAWING

UNLESS OTHERWISE SPECIFIED DIMENSIONS ARE INCHES. METRIC DIMENSIONS ARE IN BRACKETS.		DRAWN UNGUYEN		APPROVED JKUSTER		 Raychem Molded Parts 305 Constitution Dr Menlo Park, CA 94025	
DECIMAL TOLERANCES .XXX ± 0.005 [0.13 mm] .XX ± 0.01 [0.25 mm] .X ± 0.1 [0.50 mm]		RPN CP2775-000		THIRD ANGLE PROJECTION 			
ANGLE TOLERANCE .X ± 1 DEG.		SIZE B		CODE IDENT. NO. 06090		DWG. NO. CES-3-AL-2.5	
© 2009 Tyco Electronics Corporation. All rights reserved.		DO NOT SCALE THIS DRAWING		SHEET 1 OF 1			

4

3

2

1