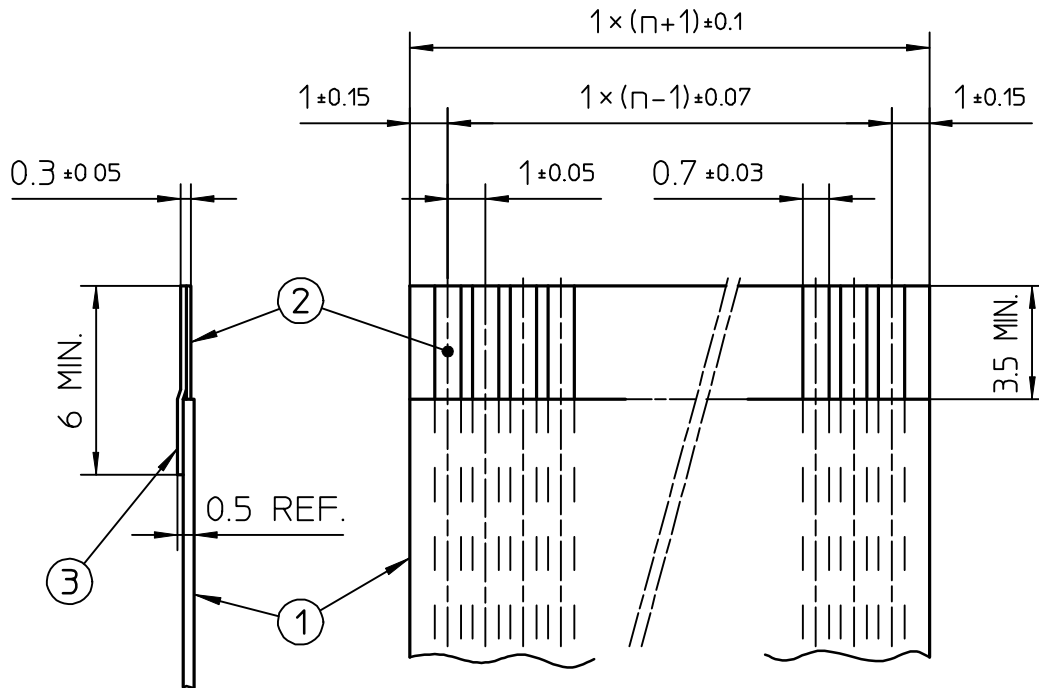


RECOMMENDED CABLE (FFC)

n : NO. OF CONDUCTOR



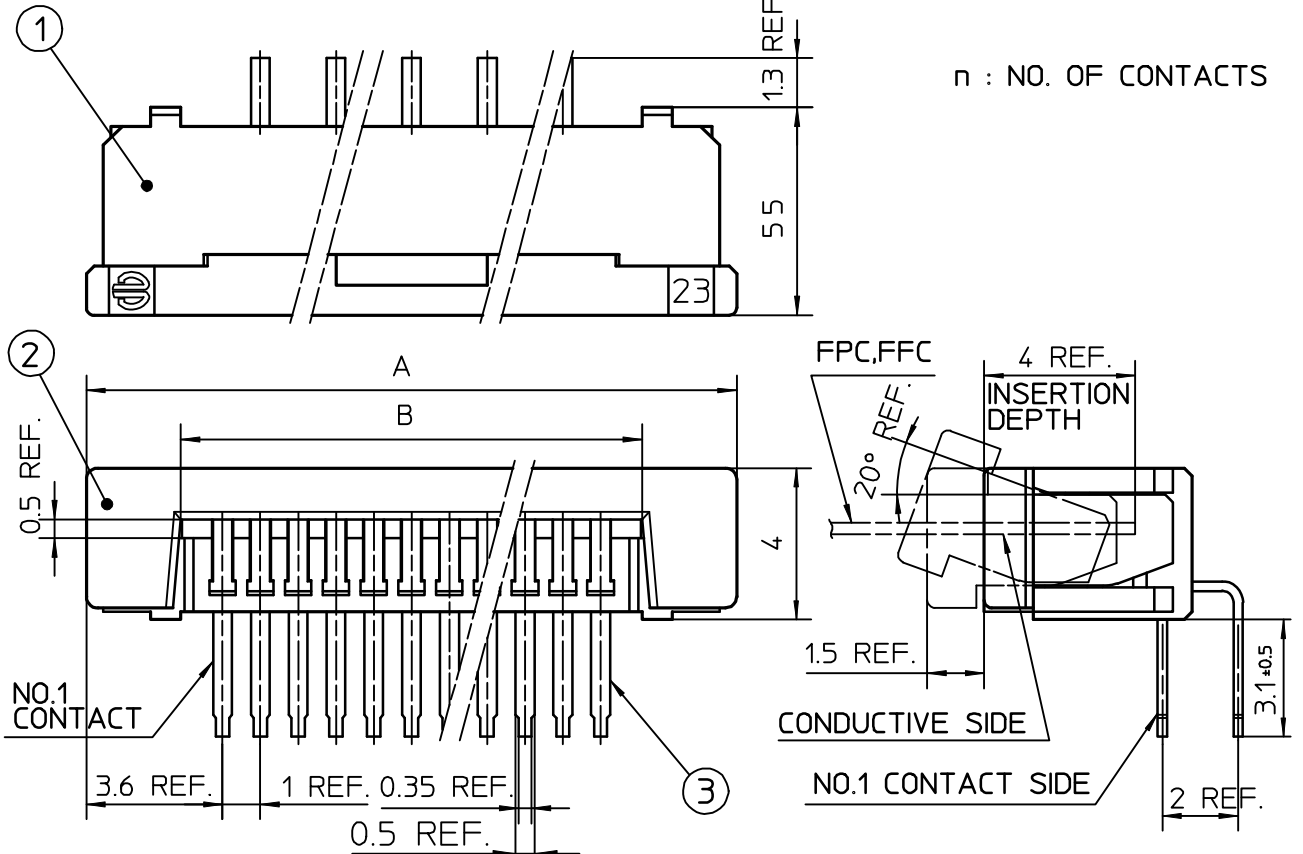
PT. NO.	PARTS NAME	MATERIAL	NOTE
1	INSULATOR	FLAME RESISTING POLYESTER OR EQUAL	_____
2	CONDUCTOR	COPPER FOIL	PLATING : TIN OR SOLDER 1 μ m MIN
3	SUPPORTING TAPE	FLAME RESISTING POLYESTER OR EQUAL	_____

NOTES

1. NO BURR AT EACH PORTION.
2. NO PEELING IN COMMON USE.

REV.	DATE	DESCRIPTION	DWN.	APPD.	DATE	SCALE	RECOMMENDED CABLE
						\times	CAT NO.
						DIM. IN mm	SLW__R/S-___
						DESIGNED	DRAWING NO
						DRAWN	REV
						CHECKED	JSA 91649
						APPROVED	DF-136 REV.B

TOLERANCES
UNLESS OTHERWISE SPECIFIED : ±0.3

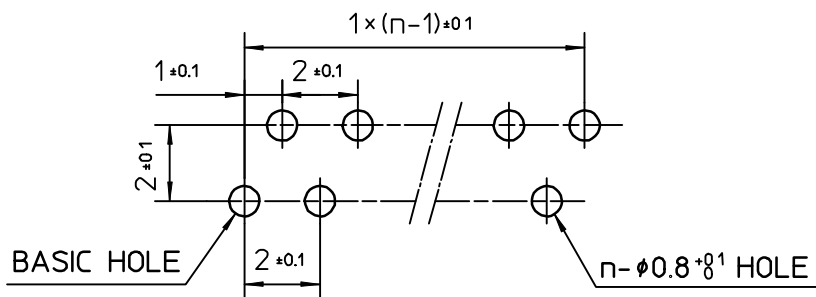


PT.NO.	PARTS NAME	MATERIAL	Q'TY	NOTE
1	HOUSING	NYLON RESIN GLASS REINFORCED (UL94V-0)	1	COLOR : BLACK
2	SLIDER		1	
3	CONTACT	PHOSPHOR BRONZE	n	PLATING : TIN ALLOY

RECOMMENDED PC BOARD

THICKNESS : 0.8~1.6

HOLE PATTERN (COMPONENT SIDE)

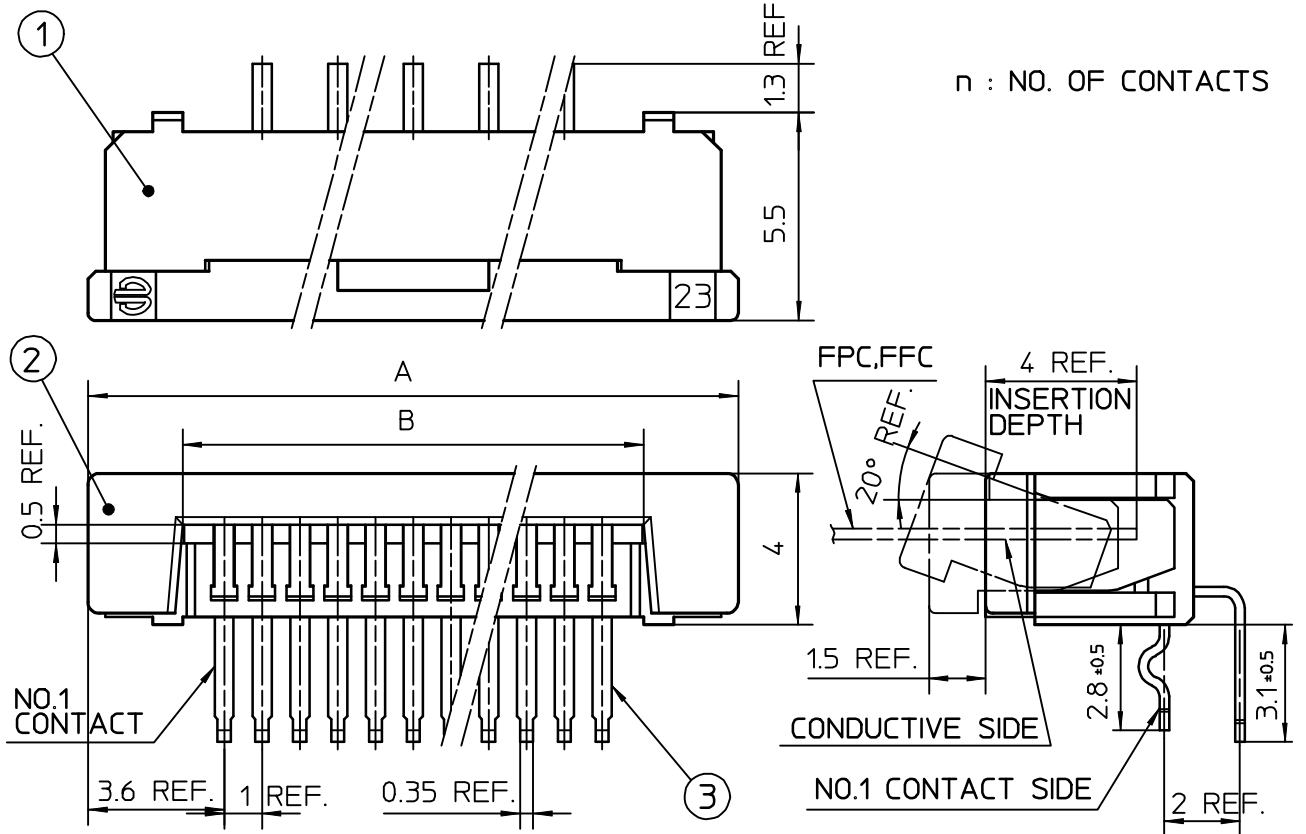


					SCALE	∞		
					DIM. IN	mm	CAT NO.	
					DESIGNED		SLW__R-1A7	
					DRAWN		DRAWING NO	REV
					CHECKED		JSA 93071	
					APPROVED			
REV.	DATE	DESCRIPTION	DWN.	APPD.	DATE			



DF-136
REV.B

TOLERANCES
UNLESS OTHERWISE SPECIFIED : ±0.3



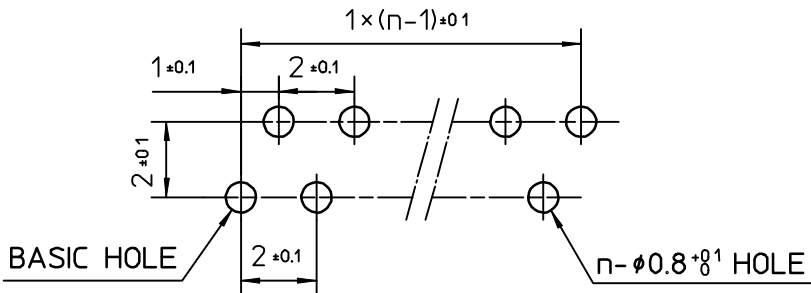
n : NO. OF CONTACTS

PT.NO.	PARTS NAME	MATERIAL	Q'TY	NOTE
1	HOUSING	NYLON RESIN GLASS REINFORCED (UL94V-0)	1	COLOR : BLACK
2	SLIDER		1	
3	CONTACT	PHOSPHOR BRONZE	n	PLATING : TIN ALLOY

RECOMMENDED PC BOARD

THICKNESS : 0.8~1.6

HOLE PATTERN (COMPONENT SIDE)



					SCALE	∞		
					DIM. IN	mm	CAT NO.	
					DESIGNED		SLW__R-1C7	
					DRAWN		DRAWING NO	REV
					CHECKED		JSA 91414	
					APPROVED			
REV.	DATE	DESCRIPTION	DWN.	APPD.	DATE			



DF-136
REV.B

CAT. NO. & DIMENSIONS

NO. OF CONTACTS (n)	CAT. NO.		DIMENSIONS (NOTE1)	
	RIGHT ANGLE TYPE	STRAIGHT TYPE	A ± 0.3	B ± 0.3
4	SLW 4 R-1A7	SLW 4 S-1A7	10.2	5.2
5	SLW 5 R-1A7	SLW 5 S-1A7	11.2	6.2
6	SLW 6 R-1A7	SLW 6 S-1A7	12.2	7.2
7	SLW 7 R-1A7	SLW 7 S-1A7	13.2	8.2
8	SLW 8 R-1A7	SLW 8 S-1A7	14.2	9.2
9	SLW 9 R-1A7	SLW 9 S-1A7	15.2	10.2
10	SLW 10 R-1A7	SLW 10 S-1A7	16.2	11.2
11	SLW 11 R-1A7	SLW 11 S-1A7	17.2	12.2
12	SLW 12 R-1A7	SLW 12 S-1A7	18.2	13.2
13	SLW 13 R-1A7	SLW 13 S-1A7	19.2	14.2
14	SLW 14 R-1A7	SLW 14 S-1A7	20.2	15.2
15	SLW 15 R-1A7	SLW 15 S-1A7	21.2	16.2
16	SLW 16 R-1A7	SLW 16 S-1A7	22.2	17.2
17	SLW 17 R-1A7	SLW 17 S-1A7	23.2	18.2
18	SLW 18 R-1A7	SLW 18 S-1A7	24.2	19.2
19	SLW 19 R-1A7	SLW 19 S-1A7	25.2	20.2
20	SLW 20 R-1A7	SLW 20 S-1A7	26.2	21.2
21	SLW 21 R-1A7	SLW 21 S-1A7	27.2	22.2
22	SLW 22 R-1A7	SLW 22 S-1A7	28.2	23.2
23	SLW 23 R-1A7	SLW 23 S-1A7	29.2	24.2
24	SLW 24 R-1A7	SLW 24 S-1A7	30.2	25.2
25	SLW 25 R-1A7	SLW 25 S-1A7	31.2	26.2
26	SLW 26 R-1A7	SLW 26 S-1A7	32.2	27.2
27	SLW 27 R-1A7	SLW 27 S-1A7	33.2	28.2
28	SLW 28 R-1A7	SLW 28 S-1A7	34.2	29.2
29	SLW 29 R-1A7	SLW 29 S-1A7	35.2	30.2
30	SLW 30 R-1A7	SLW 30 S-1A7	36.2	31.2

CAT. NO. SLW (n) R - 1A7

SERIES NAME _____

NO. OF CONTACTS _____


R: RIGHT ANGLE TYPE _____

S: STRAIGHT TYPE _____

VARIATION _____

NOTE

1. SEE PART DRAWINGS FOR DIMENSIONS A,B

					SCALE	χ		
					DIM. IN	mm	CAT NO.	
					DESIGNED		SLW__R/S-1A7	
					DRAWN		DRAWING NO	REV
					CHECKED		JSA 93070	
					APPROVED		 DF-136 REV.B	
REV.	DATE	DESCRIPTION	DWN.	APPD.	DATE			

CAT. NO. & DIMENSIONS

NO. OF CONTACTS (n)	CAT. NO.		DIMENSIONS (NOTE1)	
	RIGHT ANGLE TYPE	STRAIGHT TYPE	A ± 0.3	B ± 0.3
4	SLW4R-1C7	SLW4S-1C7	10.2	5.2
5	SLW5R-1C7	SLW5S-1C7	11.2	6.2
6	SLW6R-1C7	SLW6S-1C7	12.2	7.2
7	SLW7R-1C7	SLW7S-1C7	13.2	8.2
8	SLW8R-1C7	SLW8S-1C7	14.2	9.2
9	SLW9R-1C7	SLW9S-1C7	15.2	10.2
10	SLW10R-1C7	SLW10S-1C7	16.2	11.2
11	SLW11R-1C7	SLW11S-1C7	17.2	12.2
12	SLW12R-1C7	SLW12S-1C7	18.2	13.2
13	SLW13R-1C7	SLW13S-1C7	19.2	14.2
14	SLW14R-1C7	SLW14S-1C7	20.2	15.2
15	SLW15R-1C7	SLW15S-1C7	21.2	16.2
16	SLW16R-1C7	SLW16S-1C7	22.2	17.2
17	SLW17R-1C7	SLW17S-1C7	23.2	18.2
18	SLW18R-1C7	SLW18S-1C7	24.2	19.2
19	SLW19R-1C7	SLW19S-1C7	25.2	20.2
20	SLW20R-1C7	SLW20S-1C7	26.2	21.2
21	SLW21R-1C7	SLW21S-1C7	27.2	22.2
22	SLW22R-1C7	SLW22S-1C7	28.2	23.2
23	SLW23R-1C7	SLW23S-1C7	29.2	24.2
24	SLW24R-1C7	SLW24S-1C7	30.2	25.2
25	SLW25R-1C7	SLW25S-1C7	31.2	26.2
26	SLW26R-1C7	SLW26S-1C7	32.2	27.2
27	SLW27R-1C7	SLW27S-1C7	33.2	28.2
28	SLW28R-1C7	SLW28S-1C7	34.2	29.2
29	SLW29R-1C7	SLW29S-1C7	35.2	30.2
30	SLW30R-1C7	SLW30S-1C7	36.2	31.2

CAT. NO. SLW (n) R - 1C7

SERIES NAME ————

NO. OF CONTACTS ————


R : RIGHT ANGLE TYPE ————

S : STRAIGHT TYPE ————

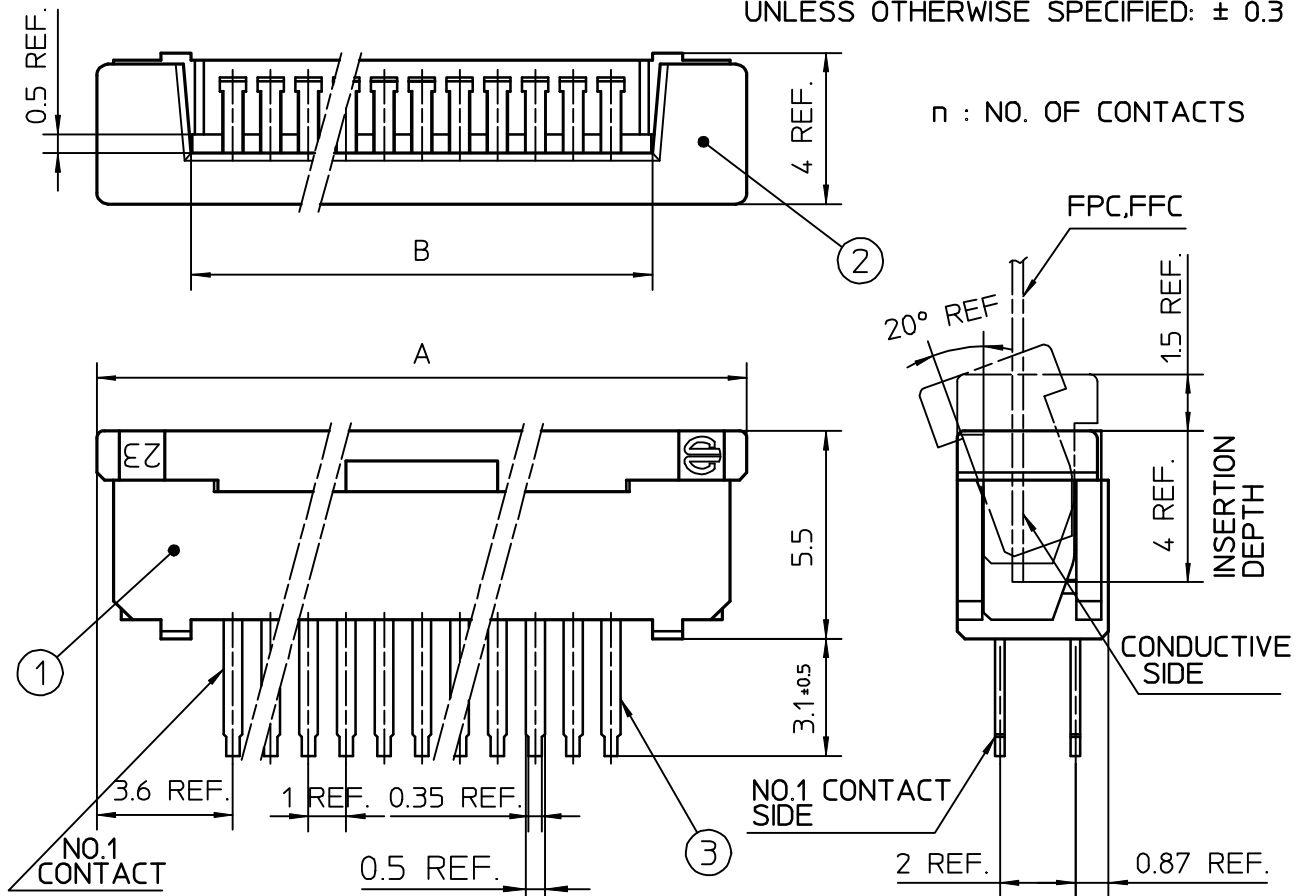
VARIATION ————

NOTE

1. SEE PART DRAWINGS FOR DIMENSIONS A,B.

					SCALE	∞		
					DIM. IN	mm	CAT NO.	
					DESIGNED		SLW__R/S-1C7	
					DRAWN		DRAWING NO	REV
					CHECKED		JSA 91718	
					APPROVED		 DF-136 REV.B	
REV.	DATE	DESCRIPTION	DWN.	APPD.	DATE			

TOLERANCES
UNLESS OTHERWISE SPECIFIED: ± 0.3

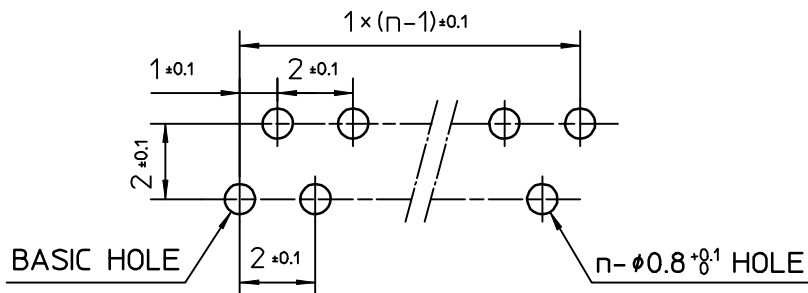


PT.NO.	PARTS NAME	MATERIAL	Q'TY	NOTE
1	HOUSING	NYLON RESIN GLASS REINFORCED (UL94V-0)	1	COLOR : BLACK
2	SLIDER		1	
3	CONTACT	PHOSPHOR BRONZE	n	PLATING : TIN ALLOY

RECOMMENDED PC BOARD

THICKNESS : 0.8-1.6

HOLE PATTERN (COMPONENT SIDE)

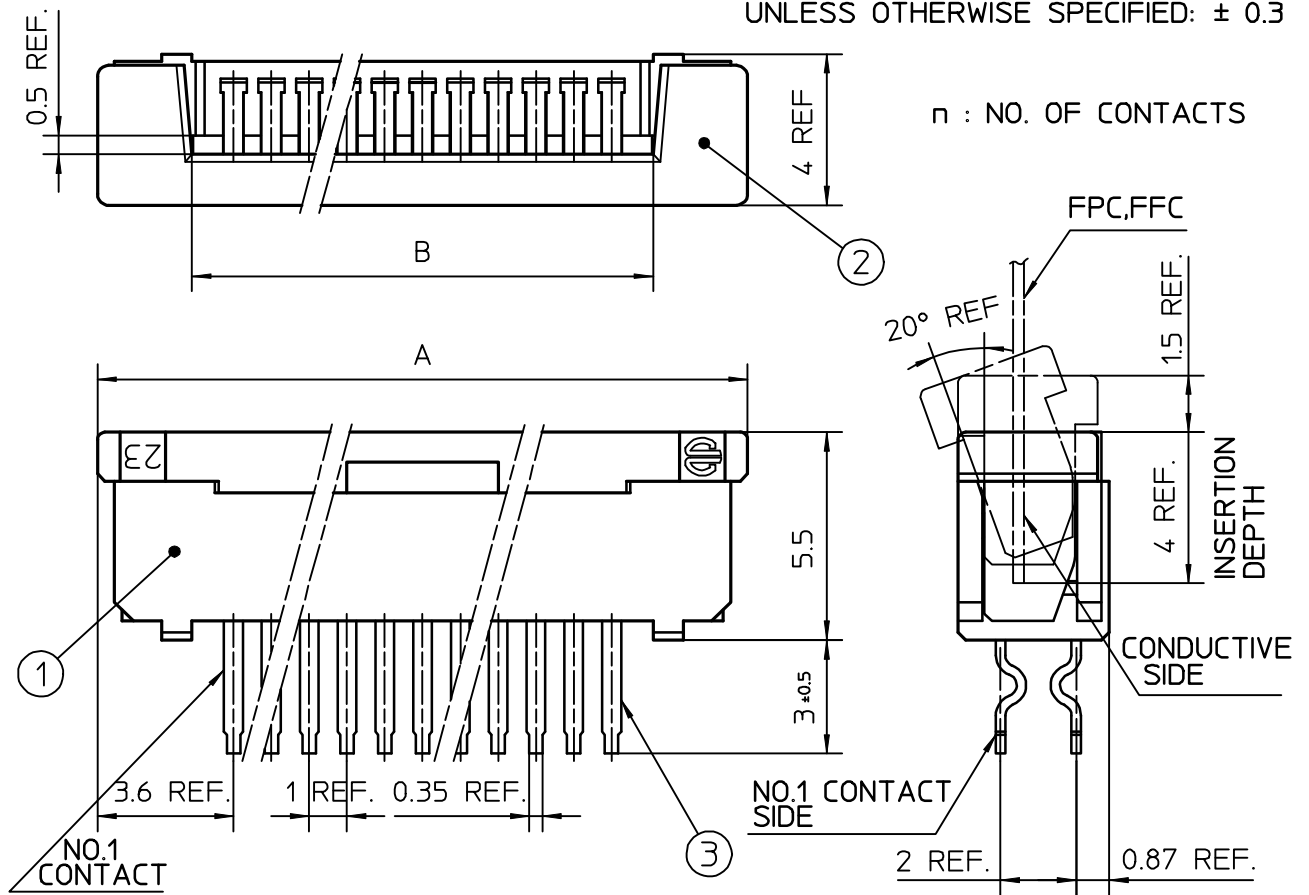


					SCALE	\times		
					DIM. IN	mm	CAT NO.	
					DESIGNED		SLW__S-1A7	
					DRAWN		DRAWING NO	REV
					CHECKED		JSA 93072	
					APPROVED			
REV.	DATE	DESCRIPTION	DWN.	APPD.	DATE			



DF-136
REV.B

TOLERANCES
UNLESS OTHERWISE SPECIFIED: ± 0.3

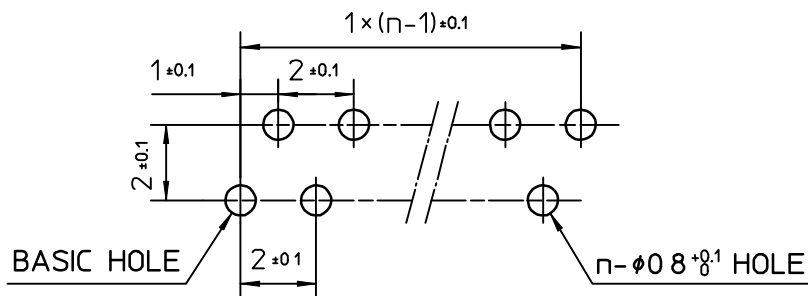


PT.NO.	PARTS NAME	MATERIAL	Q'TY	NOTE
1	HOUSING	NYLON RESIN GLASS REINFORCED (UL94V-0)	1	COLOR . BLACK
2	SLIDER		1	
3	CONTACT	PHOSPHOR BRONZE	n	PLATING : TIN ALLOY

RECOMMENDED PC BOARD

THICKNESS : 0.8-1.6

HOLE PATTERN (COMPONENT SIDE)



					SCALE	\times		
					DIM. IN	mm	CAT NO.	
					DESIGNED		SLW__S-1C7	
					DRAWN		DRAWING NO	REV
					CHECKED		JSA 91413	
					APPROVED			
REV.	DATE	DESCRIPTION	DWN.	APPD.	DATE			



DF-136
REV.B