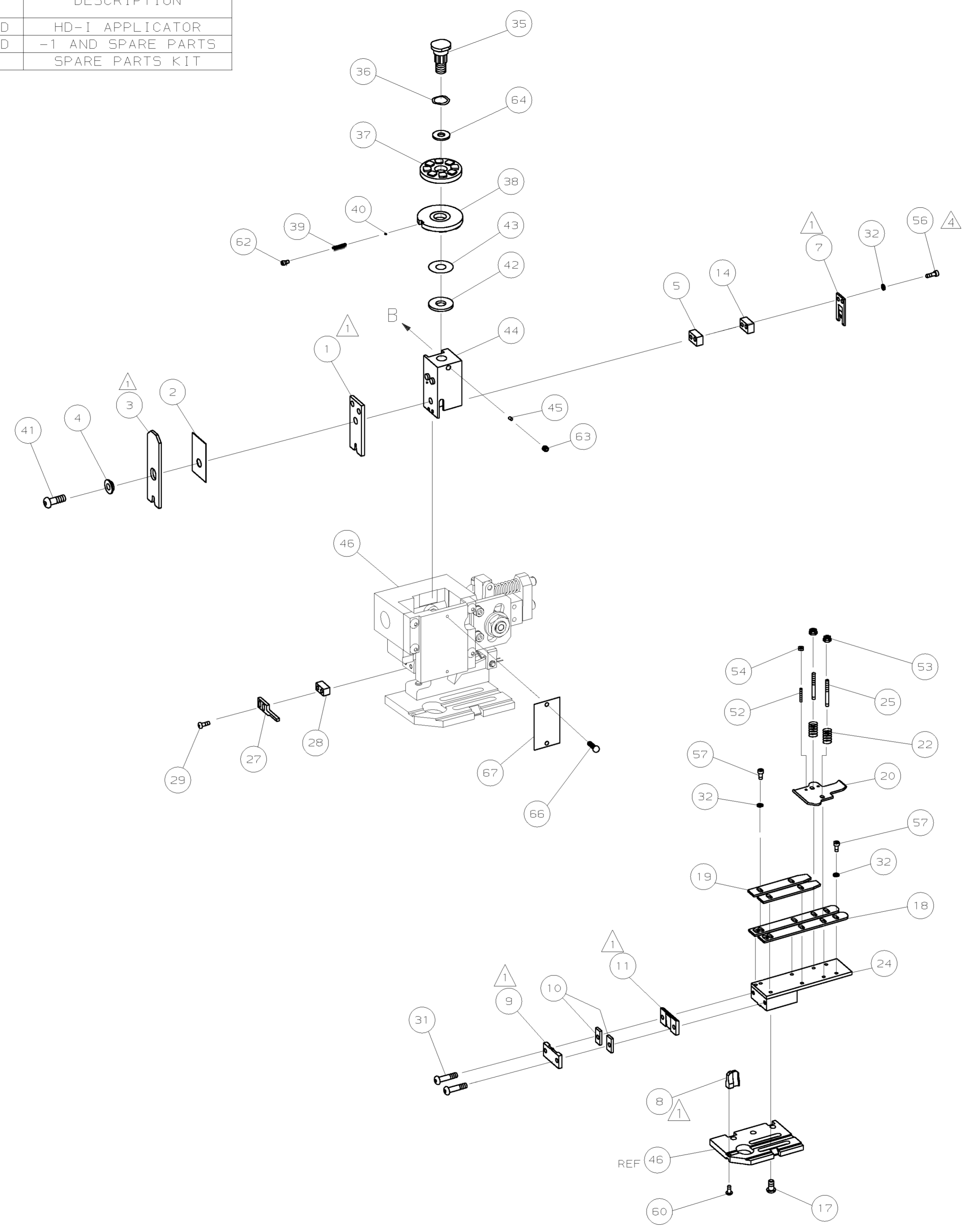


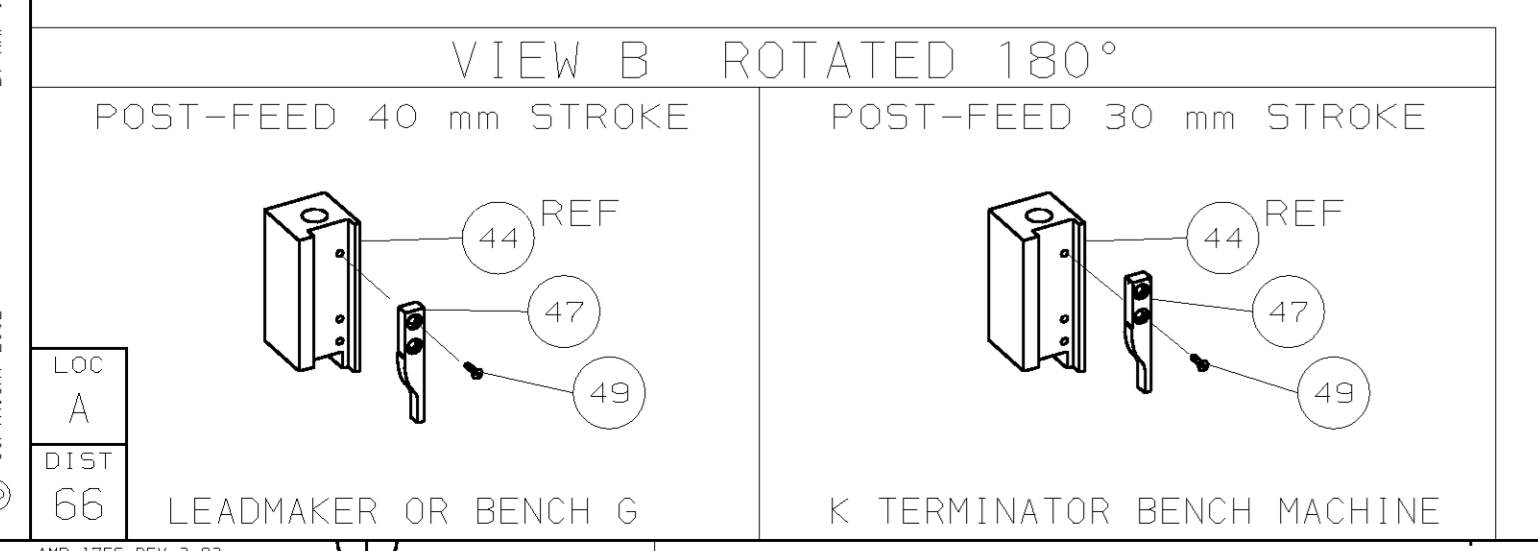
PART NUMBER	REV	FIRST USED	TERMINATOR	FEED TYPE	DESCRIPTION
1339667-1	A		BENCH & LEADMAKER	MECH POST FEED	HD-I APPLICATOR
7-1339667-1	A		BENCH & LEADMAKER	MECH POST FEED	-1 AND SPARE PARTS
7-1339667-7	A				SPARE PARTS KIT

CRIMP DATA AMP TERMINAL AMP CRIMP SPECS			
TERMINAL NAME: TERMINAL, SPADE			
CRIMP	SIZE	TYPE	RANGE
WIRE	3.30 [.130 IN]	F	18-14 AWG or 1.00-2.50mm ²
INSUL	4.57 [.180 IN]	F	2.54-3.56 [.100-.140 IN]
WIRE STRIP LENGTH SEE APPL SPEC.		APPL INSTRUCTION 408-8323	
TERMINAL APPL SPEC 114-2084		FEED 21.72 [.855 IN]	
TERMINALS APPLIED			
160113	-	-	-
160346	-	-	-
40658	-	-	-
40808	-	-	-
42168	-	-	-
42169	-	-	-
60187	-	-	-
61431	-	-	-
WIRE SIZE mm ² AWG	CRIMP HEIGHT	PIN PN AND LENGTH [IN]	
14 AWG or 2.50mm ²	2.59 ±0.05 [.102 ±.002 IN]	3-354778-7 [.2680]	
16 AWG or 1.50mm ²	2.39 ±0.05 [.094 ±.002 IN]	5-354778-5 [.2770]	
18 AWG or 1.00mm ²	2.26 ±0.05 [.089 ±.002 IN]	6-354778-5 [.2820]	



QTY	REV	PART NO	DESCRIPTION	ITEM NO		
-	1	1	1339667	PRINT, APPLICATOR LOG SHEET	73	
-	1	1	1338705-2	DOCUMENTATION PACKAGE	72	
					71	
					70	
					68	
					67	
-	1	1	461264-1	PLATE, IDENTIFICATION	67	
-	2	2	21017-2	SCR,DRIVE (#2X.19) ID PLATE	66	
					65	
-	1	1	986950-1	WASHER, FLAT PRECISION	64	
-	1	1	3-18031-0	SCR,SKT SET (M6X6) RAM	63	
-	1	1	18023-9	SCR,SKT CAP (M4X6) CP DSC	62	
					61	
-	1	1	18024-7	SCR,BHC (M4X10) ANVIL	60	
					59	
					58	
-	6	6	18023-9	SCR,SHC (M4X6) STRIP GUIDE	57	
-	2	2	9-18023-6	SCR,SHC (M4X14) SLUG BLADE	56	
					55	
-	2	2	18029-1	NUT, HEX (M3) DRAG	54	
-	2	2	986965-1	NUT, HEX SL (M4) DRAG STUD	53	
-	2	2	2-18032-2	SCR,SKT SET (M3X10) DRAG	52	
					51	
					50	
-	1	1	18024-3	SCR,BHC (M3X10) CAM	49	
					48	
-	1	1	1338676-1	CAM, POST-FEED 30 & 40 mm ST	47	
-	1	1	1338662-1	APPLICATOR, BASIC (SUBASSY)	46	
-	1	1	690191-1	PLUG, NYLON	45	
-	1	1	1320998-1	RAM	44	
-	1	1	690125-1	WASHER, LAMINATED	43	
-	1	1	690124-1	WASHER, RAM	42	
-	1	1	2-18024-6	SCREW,BHC (M8X25) CRIMPER	41	
-	1	1	23241-1	BALL, STEEL	40	
-	1	1	2-22278-7	SPRING, COMPRESSION	39	
-	1	1	1320922-1	DISC, INSULATION	38	
-	1	1	354777-1	WIRE DISC, PLASTIC	37	
-	1	1	22480-5	WASHER, SPRING	36	
-	1	1	690212-1	POST, RAM	35	
					34	
					33	
-	8	8	18025-2	WASHER, LOCK (M4) SHEAR BL	32	
-	2	2	1-18024-0	SCR,BHC (M4X20) SHEAR PL	31	
					30	
-	2	2	18024-8	SCR,BHC (M4X12) STRIPPER	29	
-	1	1	3-690451-2	SPACER, STRIPPER	28	
-	1	1	240639-1	STRIPPER	27	
					26	
-	2	2	1320906-1	DRAG, STUD	25	
-	1	1	1320995-1	STRIP GUIDE	24	
					23	
-	2	2	4-22281-1	SPRING, DRAG	22	
					21	
-	1	1	1338665-1	DRAG, STOCK	20	
-	2	2	1338664-1	GUIDE, UPPER STRIP	19	
-	2	2	1338663-4	GUIDE, LOWER STRIP	18	
-	4	4	1-18024-8	SCR,BHC (M6X12) STRIP GD PL	17	
					16	
					15	
-	1	1	2-240641-0	SPACER, SLUG BLADE	14	
					13	
					12	
△	-	1	1	240644-1	PLATE, REAR SHEAR	11
△	-	2	2	1-240645-1	SPACER, SHEAR PLATE	10
△	-	1	1	240642-1	PLATE, FRONT SHEAR	9
△	1	2	1	1-1333221-2	ANVIL	8
△	-	1	1	2-240651-8	BLADE, SLUG	7
					6	
-	1	1	1-240641-6	SPACER, SLUG BLADE	5	
-	1	1	238009-1	SPACER, BLOCK CRIMPER	4	
△	1	2	1	456134-6	CRIMPER, INSULATION	3
△	-	1	1	455888-6	SPACER, CRIMPER	2
△	1	2	1	456424-2	CRIMPER, WIRE	1

- △ RECOMMENDED SPARE PARTS.
- 2. GREASE RAM, CAM, CAM FOLLOWER AND FEED ROD LIGHTLY.
- 3. LUBRICATE DAILY PER THE APPLICATOR INSTRUCTION SHEET SUPPLIED WITH THE APPLICATOR.
- △ CUT TO LENGTH AT ASSY.



DIMENSIONS: mm [INCHES]		MATL	HT TR	FIN
DO NOT SCALE PRINT.				
TOLERANCES UNLESS OTHERWISE SPECIFIED:				
1 PLC DEC ±				
2 PLC DEC ±				
3 PLC DEC ±				
ANGLES ±				
SURF TEXTURE: ✓				
REMOVE BURRS, BREAK SHARP EDGES R0.38 MAX				
DR M. CLIFFORD		APP F. BACKHURST		AMP Incorporated Harrisburg, PA 17105-3608
CHK -		REL 21-11-02 M. CLIFFORD		
NAME		END FEED HD-I APPLICATOR		MACHINE REF HD-I APPL
SCALE		DWG NO 1339667		SHEET 1 OF 1 REV A1