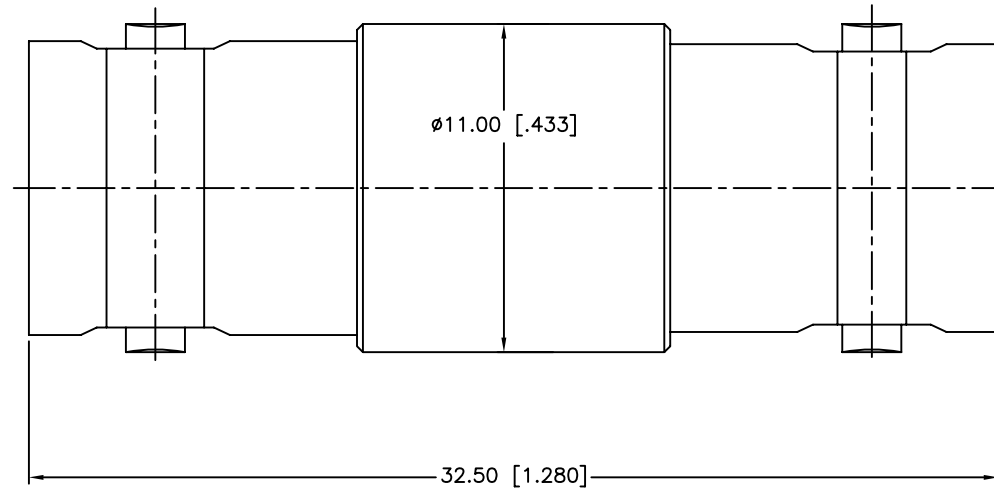


REV.	DATE	ECR NO.	DESCRIPTION
NC	10/16/08	XXXXXX	INITIAL RELEASE
A	10/28/13	2543	UPDATE DRAWING FORMAT



1. IMPEDANCE: 50 OHM
2. FREQUENCY RANGE: 0-4 GHZ
3. VSWR: 1.3 MAX.
4. DIELECTRIC WITHSTANDING VOLTAGE: 1500 VRMS, MIN.
5. DURABILITY: 500 CYCLES MIN.
6. TEMPERATURE RANGE: -65°C TO +165°C

QTY	DESCRIPTION	MATERIAL	FINISH
1	CONTACT PIN	PHOSPHOR BRONZE	GOLD
3	INSULATOR	PTFE	NATURAL
2	BODY	BRASS	NICKEL
1	HOUSING	BRASS	NICKEL

UNLESS OTHERWISE SPECIFIED DIMENSIONS ARE IN MILLIMETERS. DIMENSIONS IN [ ] ARE IN INCHES AND FOR CUSTOMER REFERENCE ONLY. UNLESS OTHERWISE SPECIFIED		APPROVALS	DATE
TOLERANCES FOR MILLIMETERS ARE: <0.5 ± 0.05mm 0.5 - 6mm ± 0.10mm 6 - 30mm ± 0.20mm 30 - 120mm ± 0.30mm ANGLES ± 1°		DRAWN M.ZHANG	10/28/13
UNLESS OTHERWISE SPECIFIED TOLERANCES FOR INCHES ARE: <.020 ± 0.002" .020 - .236 ± 0.004" .236 - 1.180 ± 0.007" 1.180 - 4.724 ± 0.012" ANGLES ± 1°		CHECKED	
DO NOT SCALE DRAWING		ISSUED	
		SHEET 1 OF 1	
		CAD FILE C:/CONNEX/112445T.DWG	

Amphenol Connex			
PART DESCRIPTION			
BNC FEMALE TO FEMALE ADAPTER			
PART NO. 112445T			
DWG. NO.	REV.	SIZE	SCALE
112445T.DWG	A	A	NA