

## Quality Control Standard

### 出货品质标准

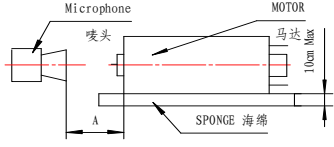
Valued customer 客户名称 :	Customer Product Name/No. (客户产品名称/编号):	扫描仪	
Model No 机种编号 :	Swatch No.: 样品编号	Date作成日: <b>2023/1/10</b>	Rev.
Our Code No. 仕样编号 :	(Please Use Our Code No. To Order) (订货时请用此仕样编号)	Rev. Date修订日:	
		备注	DV ROHS

#### 1. Conditions of Standard Operation / 工作条件

1- 1 )Driving Voltage 驱动电压	: <b>18</b> V	DC Constant between motor terminals. 马达端子电压 <b>18</b> V 直流恒压。
1- 2 )Direction of Rotation 回转方向	: <b>CW</b>	viewing from metal housing. <b>CW</b> 面对马达金属外壳时。
1- 3 )Position of Motor 马达放置状态	: To be placed horizontally when measuring. 测试时水平放置。	

1- 4 )Operating Temperature工作温度	: <b>-10</b> °C to <b>60</b> °C	噪音测试示意图
1- 5 )Operating Humidity工作湿度	: 30%RH to 95%RH	

#### 2. Conditions of Standard Test / 测试条件

2- 1 )Testing Temperature测试温度	: 10°C to 30°C	
2- 2 )Testing Humidity测试湿度	: 30%RH to 95%RH	

#### 3. Initial Electrical Characteristics / 初期特性

3- 1 ) No Load Speed 无负荷转速	: <b>10300</b> ± <b>1550</b> rpm	
	: <b>10300</b> ± <b>1550</b> 转/分	
3- 2 ) No Load Current 无负荷电流	: <b>60</b> mA max.	
	: 最大 <b>60</b> 毫安培	
3- 3 ) Load Speed 负荷转速	At Load <b>0.686</b> mNm : <b>9470</b> ± <b>1400</b> rpm	
	: <b>9470</b> ± <b>1400</b> 转/分	
3- 4 ) Load Current 负荷电流	负载 <b>0.686</b> mNm : <b>120</b> mA max.	
	: 最大 <b>120</b> 毫安培	
3- 5 ) Stall Torque 堵转扭力	At Load <b>0.9 &amp; 3.5</b> mNm : <b>6.5</b> mNm min.	
	: 最小 <b>6.5</b> mNm	
3- 6 ) Stall Current 堵转电流	在负载点 <b>0.9 &amp; 3.5</b> mNm : <b>800</b> mA max.	
	: 最大 <b>800</b> 毫安培	
3- 7 ) Mechanical Noise(vertical from housing side 10 cm Background noise 30dB Max) 机械噪音(距离铁壳侧 10 cm, 环境噪音30dB Max)	: <b>72</b>	dB Or below(RMS)JIS-A Characteristics dB 以下(RMS) JIS-A特性
3- 8 ) Reference Performance Curve 参考性能曲线	: As per attached Sheet <b>FP130-KT-08400</b>	
	: 所附图表为 <b>FP130-KT-08400</b>	
3- 9 ) Dimensions 外形尺寸	: As per Drawing attached <b>WG- F130T-Y134</b>	
	: 所附图面为 <b>WG- F130T-Y134</b>	
3- 10 ) End play of Shaft 虚位	: <b>0.05</b> ~ <b>0.30</b> mm	
	: <b>0.05</b> ~ <b>0.30</b> 毫米	

For &amp; on behalf of Customer

For &amp; on behalf of Standard Motor Co., Ltd.

Jack Lee 2023/01/11



As a reminder, the specification should be signed and returned within two weeks, or it will be considered as acceptable by the customer. 如果客户两周内不签字确认并返回, 将被视为已认可此规格。

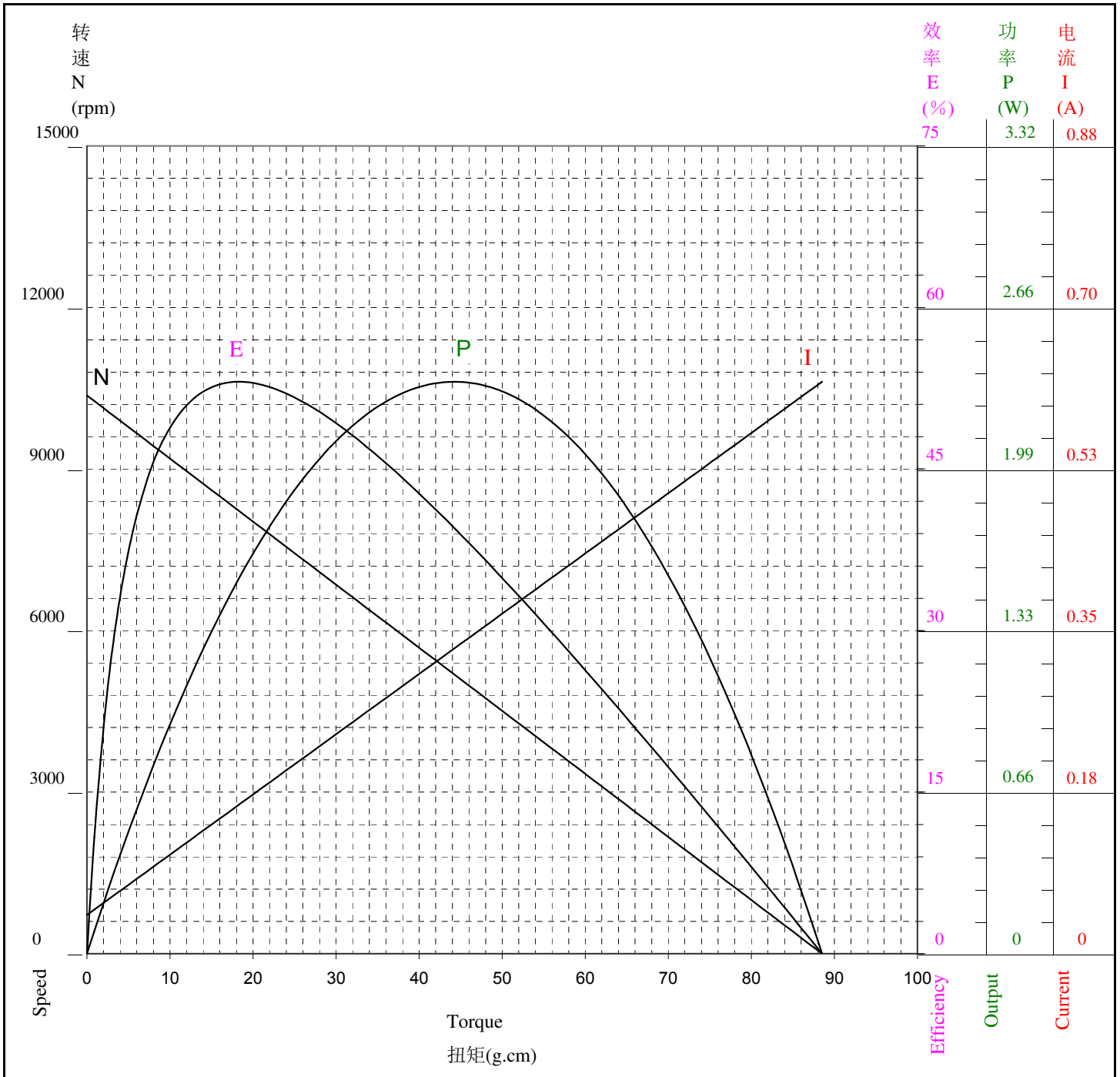
性能表只供参考  
马达实际参数请以马达出货标准为主



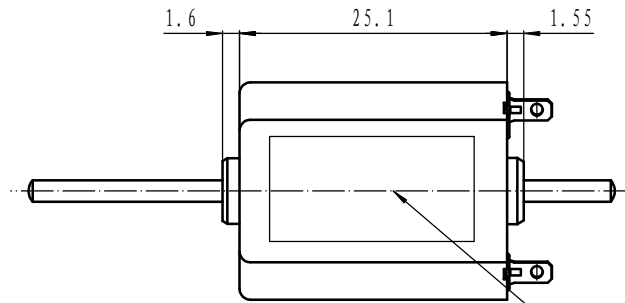
**STANDARD MOTOR 標準微型摩打有限公司**

两点法: 9.2 g.cm & 35.7 g.cm

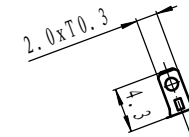
Model/Winding 型号/卷线	Voltage 电压 V	No Load 无负荷		At Maximum Efficiency 最大效率点				At Maximum Output 最大功率点				Stall 停止	
		Current 电流 A	Speed 转速 rpm	Current 电流 A	Speed 转速 rpm	Torque 扭矩 g.cm	Efficiency 效率 %	Current 电流 A	Speed 转速 rpm	Torque 扭矩 g.cm	Output 功率 W	Current 电流 A	Torque 扭矩 g.cm
FS130-KT-08400	18.0	0.042	10366	0.161	8225	18.3	53.1	0.331	5183	44.3	2.35	0.620	88.5



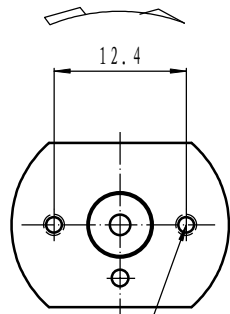
MARK	POSITION	DESCRIPTION	DATE	BY



SEE NOTE 3  
参见注记 3

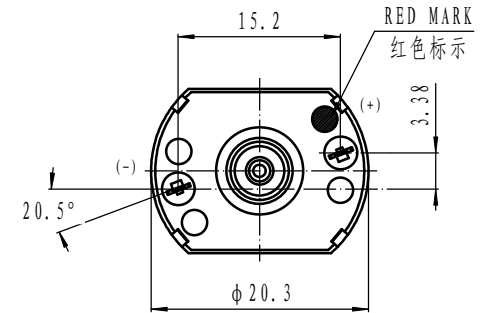
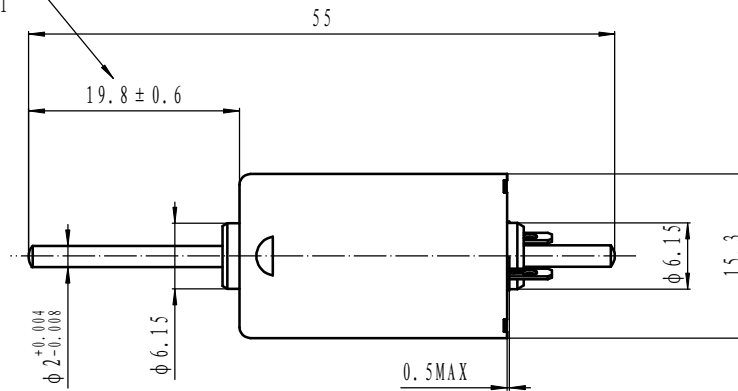


马达回转方向  
DIRECTION OF ROTATION



2-M2.0x0.4  
2 TAPPED HOLES

SEE NOTES 1  
参见注记 1



NOTES (备注):

1. THIS DIM APPLIES ONLY WHEN MOTOR SHAFT IS IN EXTREME RIGHT POSITION  
该尺寸适用于将轴压于右侧时
2. SHAFT END PLAY 0.04~0.30  
马达虚位(轴向串动) 0.04~0.30
3. SPECIFIED CONTENT WILL BE TYPEGRAPHICALED IN CONFORMITY TO GETUP BOOK OF MOTOR  
按马达仕样书印刷指定内容

Characteristic	DWN. BY	袁会军	DWN. DATE	13.09.23	TITLE	Motor Outline Drawing		
Cpk ≥ 1.33	CHK. BY		CHK. DATE		DWG. No.	WG-F130T-Y134		
Quality control	APP. BY		APP. DATE		Undeclared tolerance	± 0.3	Angle tolerance	/
Not mark	Not required	STANDARD MOTOR CO., LTD.	SCALE	2:1	Rev.	-		A3