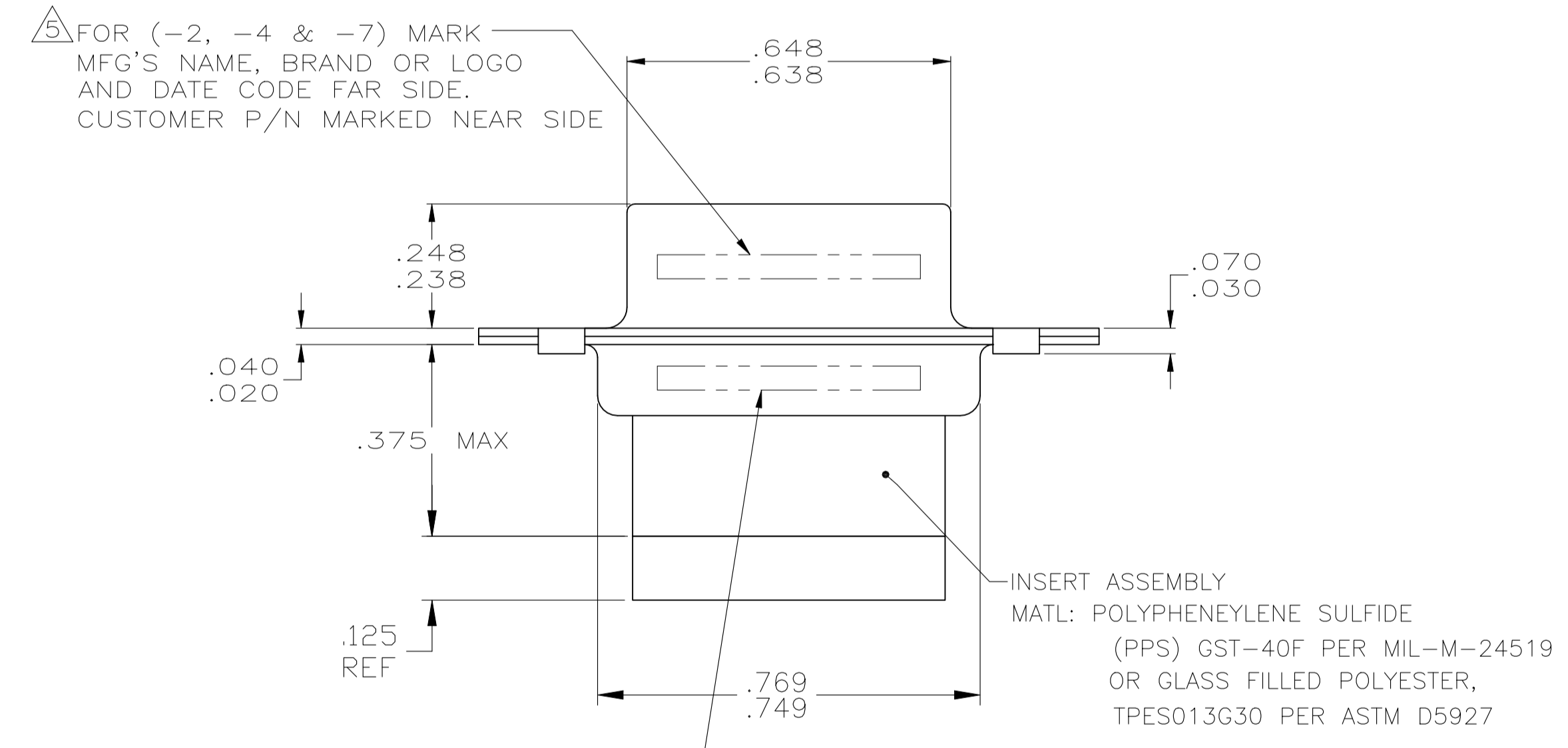
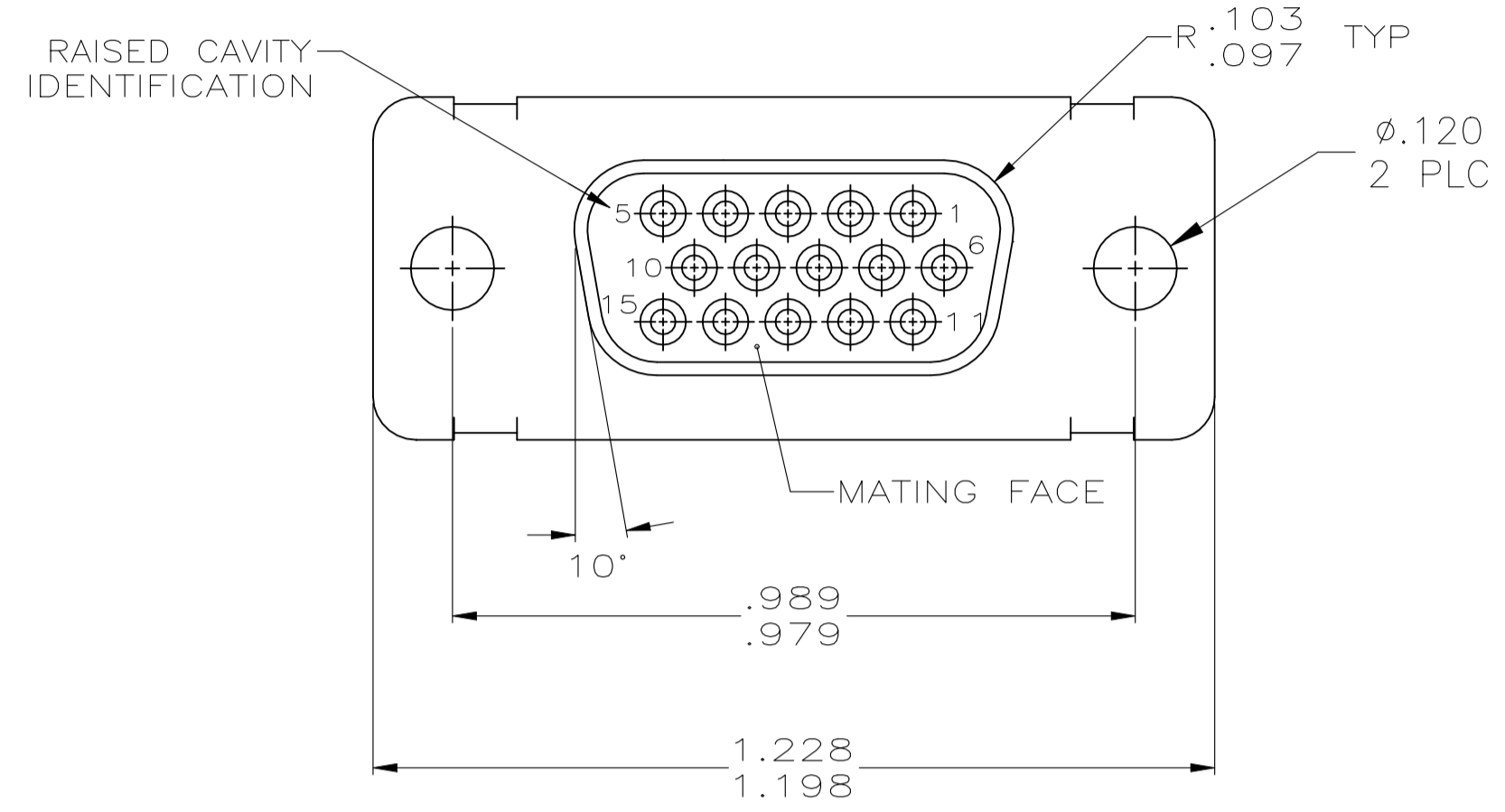
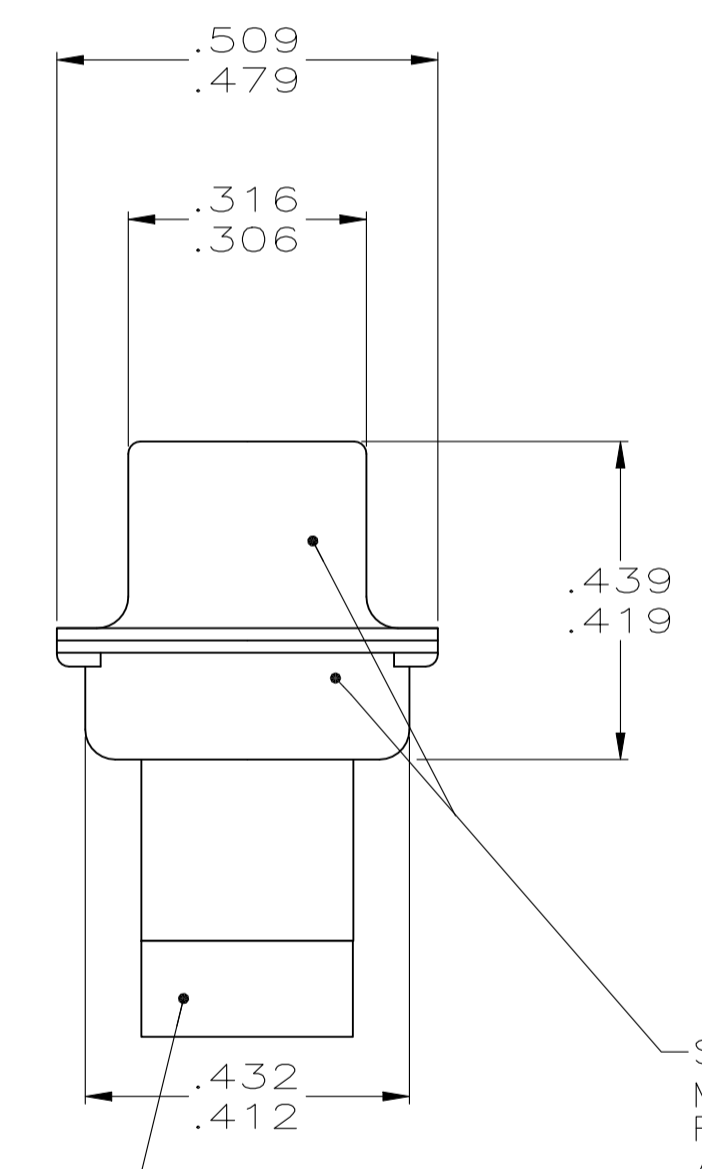


REVISIONS					
P	LTR	DESCRIPTION	DATE	DM	APVD
R		REVISED PER ECO 20-008593	23NOV2021	LN	DM

- THIS RECEPTACLE WILL MATE WITH ANY PLUG CONNECTOR WITH THE SAME INSERT ARRANGEMENT AS DEFINED BY MS18273-2.
- CONNECTOR SUPPLIED WITHOUT CONTACTS; SHOWN FOR ILLUSTRATION ONLY.
- BE-CU RETENTION CLIPS ARE INCLUDED IN INSERT AND INSTALLED WITH TINES POINTING TOWARDS MATING FACE.
- OVERALL DIMENSIONS DO NOT INCLUDE RAISED CAVITY IDENTIFICATION.
- MARKING FAR SIDE REFERS TO WIDE SIDE OF KEYSTONE. NEAR SIDE REFERS TO NARROW SIDE OF KEYSTONE.
- 100% INSPECTION REQUIRED PER BOEING 1B01:
  - VISUAL
  - DWV
  - IR
- CUSTOMER REQUIRES SINGLE LOT DATE CODE.
- SPECIAL REQUIREMENTS:
  - TEST TWO CONNECTORS PER LOT FOR COMPLIANCE TO GROMMET PEEL STRENGTH REQUIREMENTS.
  - TEST ALL CIRCUIT CAVITIES FOR MISALIGNMENT OR EXCESSIVE ADHESIVE.



CUSTOMER P/N MARKED ON FAR SIDE. MANUFACTURER'S NAME, BRAND OR LOGO AND DATE CODE MARKED ON NEAR SIDE. FOR(-2, -4 & -7) MARK MFG'S P/N FAR SIDE.



MFG'S P/N 206071-1 (SUPPLIED WITH 211667-7 ONLY)

SHELL, FRONT & REAR  
MAT'L: BRASS PER ASTM B-19  
FINISH: .0000050 MIN GOLD PLATED PER  
ASTM-B-488 OVER 0.000100  
MIN COPPER PER AMS 2418

GROMMET  
MAT'L: SILICONE RUBBER

REMARKS	CUSTOMER PART NO.	MARKED MFG'S P/N	PART NO
△ △	1B01-025RHW	---	1-211667-1
CONTACTS INCLUDED	B010648-0002	211667-7	211667-7
---	---	211667-4	211667-4
△ △	2A065-019V	211667-2	211667-2
△	1B01-025	---	211667-1

THIS DRAWING IS A CONTROLLED DOCUMENT.

DIMENSIONS: INCHES	TOLERANCES UNLESS OTHERWISE SPECIFIED:	DIN 3-9-07	C.C.THOMAS
0. PLC ± -	1. PLC ± -	3-9-07	N.DEIBERT
2. PLC ± -	3. PLC ± .005	3-9-07	N.DEIBERT
4. PLC ± -	ANGLES ± 1'		

MATERIAL: SEE CALLOUTS FINISH: SEE CALLOUTS WEIGHT: 0.000000 A1 00779 C=211667

CUSTOMER DRAWING SCALE: 4:1 SHEET 1 OF 1 REV R

STE TE Connectivity  
RECEPTACLE ASSY,AMPLIMITE,15 POSN., SIZE 1, SERIES 90,NON-MAGNETIC WITH GROMMET