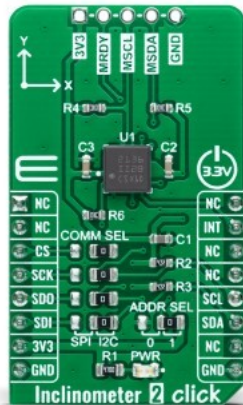


## Inclinometer 2 Click



PID: MIKROE-5156

Inclinometer 2 Click is a compact add-on board that measures the orientation angle of an object with respect to the force of gravity. This board features the IIS21CLX, high accuracy, and resolution two-axis inclinometer from STMicroelectronics. It allows selectable full-scale measurements in ranges of  $\pm 0.5/\pm 1/\pm 2/\pm 3g$  in two axes with a configurable host interface that supports both SPI and I2C serial communication. The sensing element is manufactured using a dedicated micromachining process developed by STMicroelectronics to produce inertial sensors and actuators on silicon wafers. Its high accuracy, stability over temperature, and repeatability make this Click board™ particularly suitable for inclination measurement applications such as precision inclinometers, equipment installation/monitoring, robotics, industrial automation, and more.

Inclinometer 2 Click is supported by a [mikroSDK](#) compliant library, which includes functions that simplify software development. This [Click board™](#) comes as a fully tested product, ready to be used on a system equipped with the [mikroBUS™](#) socket.

Mikroe produces entire development toolchains for all major microcontroller architectures.

Committed to excellency, we are dedicated to helping engineers bring the project development up to speed and achieve outstanding results.



ISO 27001: 2013 certification of informational security management system.  
 ISO 14001: 2015 certification of environmental management system.  
 OHSAS 18001: 2008 certification of occupational health and safety management system.



ISO 9001: 2015 certification of quality management system (QMS).

## Specifications

Type	Motion
Applications	Can be used suitable for inclination measurement applications such as precision inclinometers, equipment installation/monitoring, robotics, industrial automation, and more
On-board modules	IIS2ICLX - two-axis inclinometer with digital output from STMicroelectronics
Key Features	Low power consumption, selectable full scale, low noise performance, high stability and repeatability, selectable interface, I2C Master interface, high accuracy, and more
Interface	I2C,SPI
ClickID	No
Compatibility	mikroBUS
Click board size	M (42.9 x 25.4 mm)
Input Voltage	3.3V

## Resources

[mikroBUS™](#)

[mikroSDK](#)

[Click board™ Catalog](#)

[Click boards™](#)

## Downloads

[Inclinometer 2 click example on Libstock](#)

[Inclinometer 2 click 2D and 3D files](#)

[IIS2ICLX datasheet](#)

[Inclinometer 2 click schematic](#)

Mikroe produces entire development toolchains for all major microcontroller architectures.

Committed to excellency, we are dedicated to helping engineers bring the project development up to speed and achieve outstanding results.



ISO 27001: 2013 certification of informational security management system.  
 ISO 14001: 2015 certification of environmental management system.  
 OHSAS 18001: 2008 certification of occupational health and safety management system.



ISO 9001: 2015 certification of quality management system (QMS).