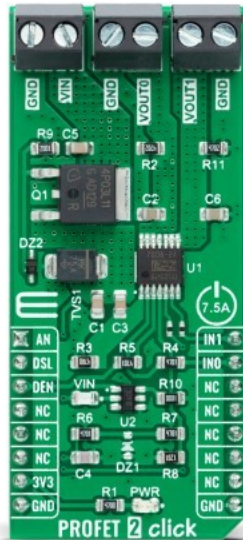


PROFET 2 Click - 7.5A



PID: MIKROE-4819

PROFET 2 Click is a compact add-on board that contains a smart high-side power switch. This board features the [BTS70082EPAXUMA1](#), a dual-channel, high-side power switch with embedded protection and diagnosis feature from [Infineon Technologies](#). This switch has a driving capability suitable for 7.5A loads and high inrush current loads and features a ReverSave™, which causes the power transistor to switch on in case of reverse polarity. Besides its protection features, it also has several pin-configurable diagnosis features such as proportional load current sense, open Load in ON and OFF state, and short circuit to ground and battery. This Click board™ is suitable for resistive, inductive, and capacitive loads, replaces electromechanical relays, fuses and discrete circuits, and many more.

PROFET 2 Click is supported by a [mikroSDK](#) compliant library, which includes functions that simplify software development. This [Click board™](#) comes as a fully tested product, ready to be used on a system equipped with the [mikroBUS™](#) socket.

Mikroe produces entire development toolchains for all major microcontroller architectures.

Committed to excellency, we are dedicated to helping engineers bring the project development up to speed and achieve outstanding results.



ISO 27001: 2013 certification of informational security management system.
 ISO 14001: 2015 certification of environmental management system.
 OHSAS 18001: 2008 certification of occupational health and safety management system.



ISO 9001: 2015 certification of quality management system (QMS).

Specifications

Type	Power Switch
Applications	Can be used for resistive, inductive, and capacitive loads, replaces electromechanical relays, fuses and discrete circuits, and many more
On-board modules	BTS70082EPAXUMA1 - dual-channel, smart high-side power switch with embedded protection and diagnosis feature from Infineon Technologies
Key Features	High-side switch with diagnosis and embedded protection, reverseON for low power dissipation in reverse polarity, UVLO/OVLO, wide external power supply range with LED indication, and more
Interface	Analog,GPIO
ClickID	No
Compatibility	mikroBUS
Click board size	L (57.15 x 25.4 mm)
Input Voltage	3.3V,External

Resources

[mikroBUS™](#)

[mikroSDK](#)

[Click board™ Catalog](#)

[Click boards™](#)

Downloads

[PROFET 2 Click - 7.5A schematic](#)

[BTS7008-2EPA datasheet](#)

[PROFET 2 Click - 7.5A example on Libstock](#)

[PROFET 2 Click - 7.5A 2D and 3D files](#)

Mikroe produces entire development toolchains for all major microcontroller architectures.

Committed to excellency, we are dedicated to helping engineers bring the project development up to speed and achieve outstanding results.



ISO 27001: 2013 certification of informational security management system.
 ISO 14001: 2015 certification of environmental management system.
 OHSAS 18001: 2008 certification of occupational health and safety management system.



ISO 9001: 2015 certification of quality management system (QMS).