

RMP | Cylindric retaining magnets

threaded hole

METRIC

RoHS

AN

MATERIAL

Lacquered steel housing.

STANDARD EXECUTION

(AlNiCo) Aluminium-nickel-cobalt magnet, resistant to temperatures up to 450°C.

Red lacquering, resistant to temperatures up to 180°C. See Guidelines for the choosing (on page 1180).

FEATURES AND APPLICATIONS

RMP cylindric retaining magnets are shielded magnetic systems with high performances and moderate overall dimensions. For easier handling and for avoiding demagnetisation, these magnets have an iron plate on their adhesive surface.

RMQ | Cylindric retaining magnets

pass-through hole

RoHS

AN

STANDARD EXECUTION

(AlNiCo) Aluminium-nickel-cobalt magnet, resistant to temperatures up to 280°C.

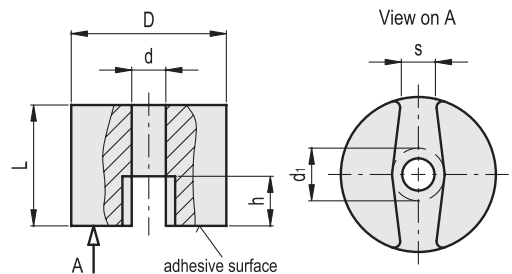
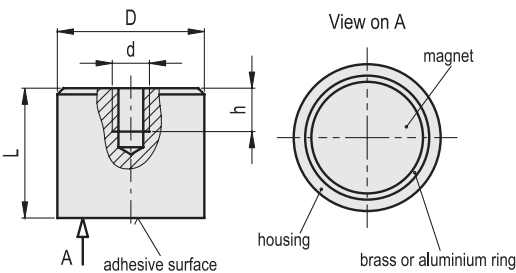
Red lacquering, resistant to temperatures up to 180°C. See Guidelines for the choosing (on page 1180).

FEATURES AND APPLICATIONS

RMQ cylindric retaining magnets are unshielded, cast, magnetic systems with high performances and moderate overall dimensions. They have a split adhesive surface. To ensure that the adhesive force is not impaired, the fixing screws must be made out of non-magnetic material. For easier handling and for avoiding demagnetisation, these magnets have an iron plate on their adhesive surface.



| Conversion Table | |
|-------------------|------|
| 1 mm = 0,039 inch | |
| D | |
| mm | inch |
| 12.5 | 0.49 |
| 13 | 0.51 |
| 17 | 0.67 |
| 19.1 | 0.75 |
| 21 | 0.83 |
| 25.4 | 1.00 |
| 27 | 1.06 |
| 31.8 | 1.25 |
| 35 | 1.38 |



METRIC

METRIC

| Code | Description | D | d | L | h | Nominal adhesive forces* [N] | ⚖️ |
|--------|-------------|------|----|----|---|------------------------------|-----|
| 502701 | RMP-AN-12.5 | 12.5 | M4 | 16 | 7 | 20 | 15 |
| 502711 | RMP-AN-17 | 17 | M6 | 16 | 5 | 26 | 29 |
| 502721 | RMP-AN-21 | 21 | M6 | 19 | 7 | 40 | 42 |
| 502731 | RMP-AN-27 | 27 | M6 | 25 | 9 | 65 | 89 |
| 502741 | RMP-AN-35 | 35 | M6 | 30 | 9 | 150 | 190 |

| Code | Description | D | d | dmax Ø Screw head | L | h | s | Nominal adhesive forces* [N] | ⚖️ |
|--------|-------------|------|-----|----------------------------|------|------|-----|------------------------------|-----|
| 502801 | RMQ-AN-13 | 13 | 4.2 | 7 | 10 | 4.5 | 2 | 7 | 6 |
| 502811 | RMQ-AN-19 | 19.1 | 4.8 | 8.7 | 12.7 | 6.5 | 5.7 | 19 | 23 |
| 502821 | RMQ-AN-25 | 25.4 | 4.5 | 8.5 | 20 | 8 | 5.6 | 40 | 71 |
| 502831 | RMQ-AN-32 | 31.8 | 7.1 | 10 | 25.4 | 12.7 | 7.9 | 66 | 132 |

* The values of the nominal adhesive forces are approximate and refer to magnetic properties observed on laboratory samples.

* The values of the nominal adhesive forces are approximate and refer to magnetic properties observed on laboratory samples.