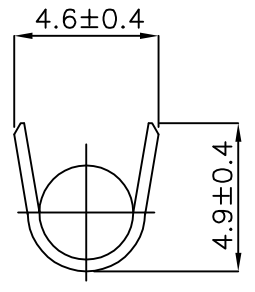
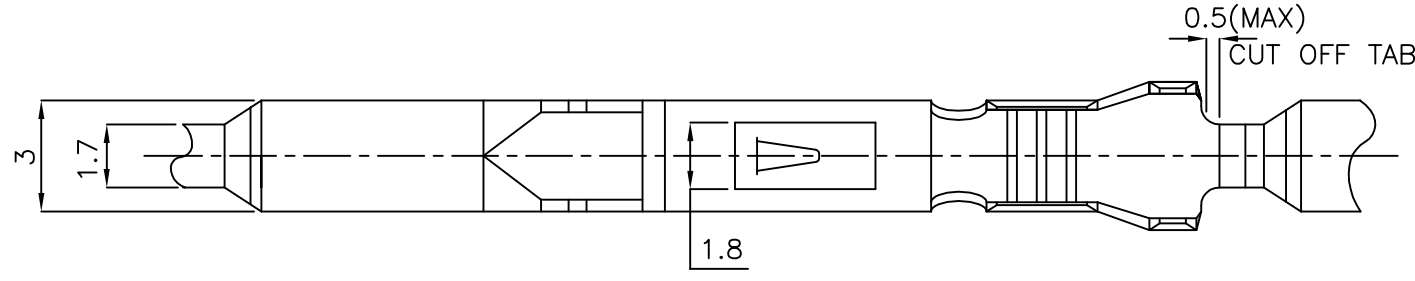
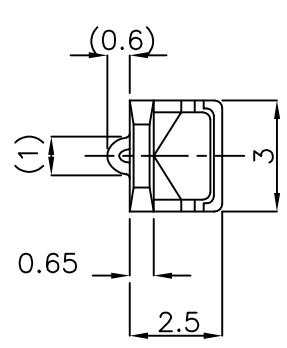


THIS DRAWING IS UNPUBLISHED.

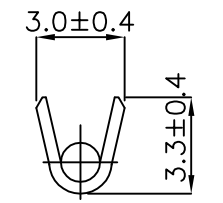
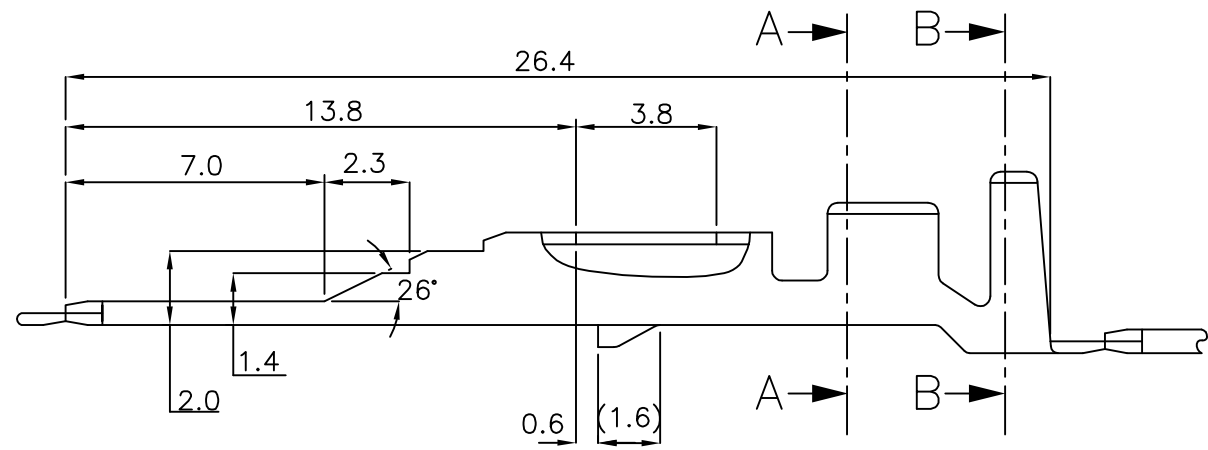
RELEASED FOR PUBLICATION

© COPYRIGHT BY TYCO ELECTRONICS CORPORATION, ALL RIGHTS RESERVED.

LOC	DIST	REVISIONS					
		P	LTR	DESCRIPTION	DATE	DWN	APVD
DS	-		0	RELEASED	24.JUL.'96	YM	CS
			A	REVISED (ECR-16-004561)	29.MAR.'16	KT.J	KT.L



SECTION B-B



SECTION A-A

- \* NOTE \*
1. APPLICABLE REC. P/N : 172775 / 172773
  2. APPLICABLE HOUSING P/N : 172518. ETC.

85034-1	PRE-TIN BRASS	
PART NO.	MATERIAL	FINISH

<small>THIS DRAWING IS A CONTROLLED DOCUMENT FOR TYCO ELECTRONICS CORPORATION IT IS SUBJECT TO CHANGE AND THE CONTROLLING ENGINEERING ORGANIZATION SHOULD BE CONTACTED FOR THE LATEST REVISION.</small>		DWN KT JUNG CHK KT JUNG APVD KT LIM PRODUCT SPEC 108-61003 APPLICATION SPEC 114-61001 WEIGHT A3 00779C=85034 CUSTOMER DRAWING			
DIMENSIONS: MM	TOLERANCES UNLESS OTHERWISE SPECIFIED:	NAME			
	0 <XX<10 ± 0.2 10 ≤ XX < 30 ± 0.25 30 ≤ XX < 100 ± 0.3 ANGLES ± 3°	MIC MK-II TAB CONTACT			
MATERIAL SEE TABLE	FINISH SEE TABLE	SIZE	CAGE CODE	DRAWING NO	RESTRICTED TO
		A3	00779C	=85034	-
		SCALE	SHEET	OF	REV
		5/1	1	1	A