

NOTES:

1.MATERIAL:

METAL SHELL: BRASS  
 HOUSING: HIGH TEMP THERMOPLASTIC,UL94V-0,COLOR:BLACK  
 INSERT: HIGH TEMP THERMOPLASTIC,UL94V-0,COLOR:BLACK  
 TERMINAL: PHOSPHOR BRONZE

2.PLATING:

TERMINAL:  
 CONTACT AREA: GOLD(Au),THICKNESS=50 MICROINCH/1.27 MICROMETER  
 SOLDER TAIL: TIN(Sn),THICKNESS=100 MICROINCH MINIMUM.  
 UNDER PLATE: NICKEL (Ni).

METAL SHELL:

SOLDER TAIL: TIN(Sn),THICKNESS=100 MICROINCH MINIMUM.  
 UNDER PLATE: NICKEL (Ni),(SOLDERING AVAILABLE)  
 SURFACE APPEARANCE: BRIGHT.

3.RECOMMENDED PCB THICKNESS: 1.60±0.05

4.PRODUCT SPECIFICATION REFER TO PS-48146-001

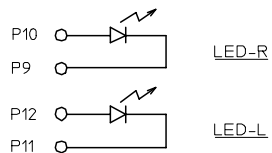
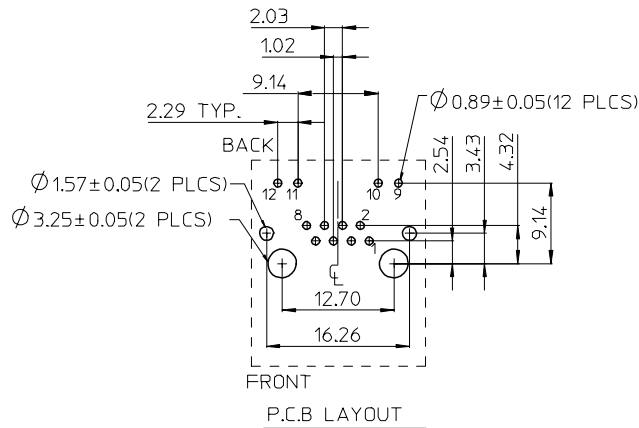
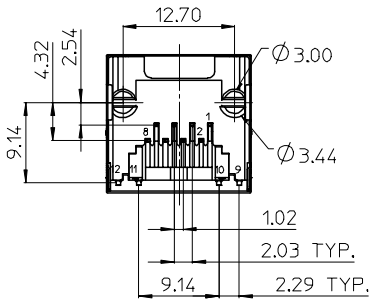
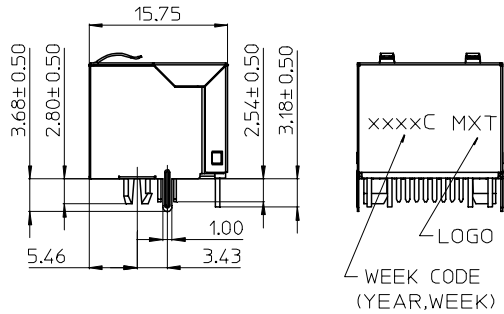
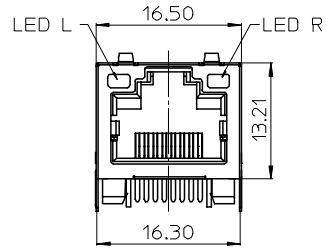
5.TEST SUMMARY REFER TO TS-48146-001

6.PACKAGING SPECIFICATION REFER TO PK-48146-001.

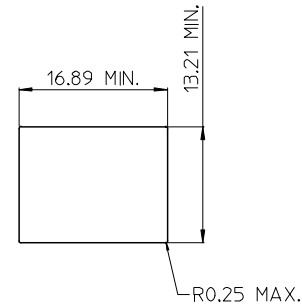
7.LEAD FREE AND ROHS COMPLIANT PRODUCT.

LED ELECTRICAL SPECIFICATION

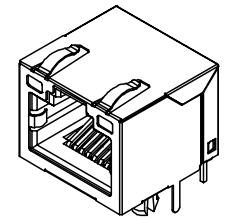
PARAMETER	GREEN (TYP.)	AMBER (TYP.)	UNITS	TEST CONDITIONS
POWER DISSIPATION	105	100	mW	
REVERSE VOLTAGE	5	5	V	
PEAK WAVELENGTH	565	600	nm	IF=20mA
FORWARD VOLTAGE	2.2 MAX.=2.5	2.1 MAX.=2.5	V	IF=20mA



LED SCHEMATIC



RECOMMENDED PANEL CUTOUT



P/N	LED COLOR	
	LEFT	RIGHT
48146-0001	GREEN	GREEN
48146-0011	GREEN	AMBER
48146-0010	AMBER	GREEN



ADD NEW P/N	2006/09/12
EC NO: SH2007-0138	2006/09/13
DRWN:ALLIN	2006/09/13
CHKD:	2006/09/13
APPR:WWSCHANG	2006/09/13

QUALITY SYMBOLS	DESCRIPTION
▽=0	
▽=0	

GENERAL TOLERANCES (UNLESS SPECIFIED)	MM	INCH
4 PLACES	± ---	± ---
3 PLACES	± ---	± ---
2 PLACES	± 0.25	± ---
1 PLACE	± 0.25	± ---
ANGULAR ± 3 °		

DIMENSION STYLE		SCALE	DESIGN UNITS	THIRD ANGLE PROJECTION
MM ONLY		1:1	METRIC	
DRAWN BY	DATE	TITLE		
LINDA	2004/07/27	CATEGORY 5 MODULAR JACK		
CHECKED BY	DATE	8 POSITION, 8 CONTACTS		
ALL IN	2004/07/27			
APPROVED BY	DATE			
WWSCHANG	2004/07/27			
MATERIAL NO.	DOCUMENT NO.			
SEE TABLE	SD-48146-001			

MOLEX INCORPORATED		SHEET NO.
		1 OF 1
DRAFT WHERE APPLICABLE MUST REMAIN WITHIN DIMENSIONS		
THIS DRAWING CONTAINS INFORMATION THAT IS PROPRIETARY TO MOLEX INCORPORATED AND SHOULD NOT BE USED WITHOUT WRITTEN PERMISSION		