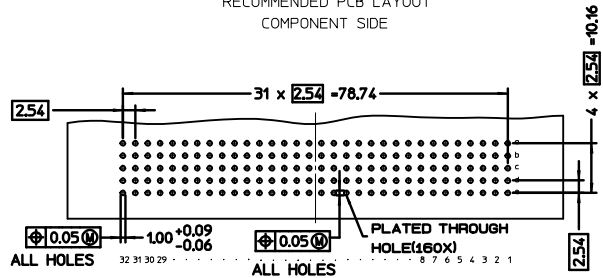


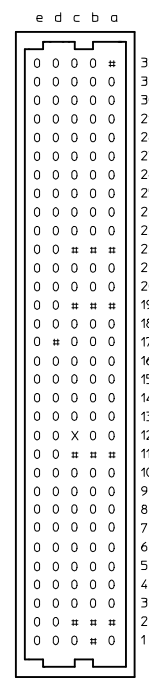
TERMINAL TYPE (CPF)  
COMPLIANT PRESSFIT

RECOMMENDED PCB LAYOUT  
COMPONENT SIDE



NOTE:

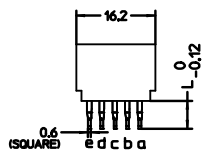
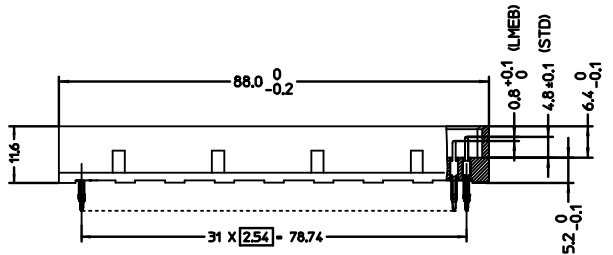
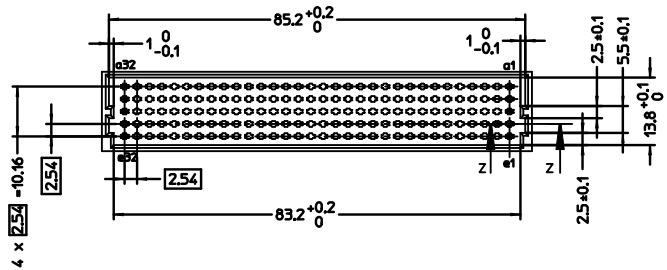
- 1) MATERIAL:-  
HOUSING : THERMOPLASTIC POLYESTER, GLASS FILLED, UL94V-0  
COLOUR: PEBBLE GREY, RAL 7032  
  
TERMINAL - PHOSPHOR BRONZE
- 2) FINISH:  
CONTACT ZONE : 30 MICRO INCH MIN Au (APPLIED OVER 3.8 MM MIN ALONG PIN)  
UNIFORMLY APPLIED OVER 50 MICROINCH MIN NICKEL (Ni)  
  
PRESSFIT ZONE : 40 MICROINCH MIN OF TIN-LEAD (SnPb)
- 3) CONNECTOR MUST MEET BELLCORE GR1217-CORE UNCONTROLLED ENVIRONMENT LEVEL 3 REQUIRED
- 4) CUT FACES OF TIP WITHOUT PLATING PERMITTED
- 5) MATERIAL NUMBER, BATCHCODE SHALL BE PRINTED ON THE CONNECTOR
- 6) PRODUCT SPECIFICATION : PS-36577-001



PIN STAGING INSERTION TABLE

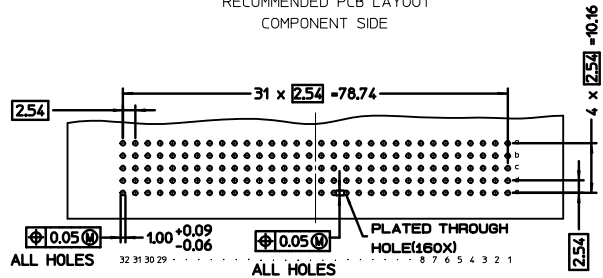
CONTACT LENGTH	TERMINAL LENGTH (L)	TERMINAL TYPE	SYMBOL
LMEB 4.0 MM	4.0 MM	CPF	0
STD 4.8 MM	4.0 MM	CPF	#
NO PIN N/A	NO PIN	NONE	X

EC NO. 2001-0073 DESIGNED 24/06/03 DRAWN S 24/06/03 CHECKED 24/06/03 APPROVED 24/06/03 RELY	QUALITY SYMBOLS MAJOR CRITICAL	GENERAL TOLERANCES: (UNLESS SPECIFIED) mm INCH	SCALE DESIGN UNITS 2 : 1 mm INCH	DRAWN BY & DATE S.S 03/04/03 CHECKED BY & DATE G.L 03/04/03 APPROVED BY & DATE G.L 03/04/03	DIMENSIONS: THRD ANGLE PROJECTION mm INCH mm ONLY	SHT REV REVISE ON CAD ONLY
	4 PLACES 3 PLACES 2 PLACES 1 PLACE	ANGULAR: ±2° DRAFT WHERE APPLICABLE MUST REMAIN WITHIN DIMENSIONS	CAD FILENAME SD-36577-002.MI	MATERIAL NO. 36577-0002	DRAWING NO. SD-36577-002	SHEET NO. 1 OF 1



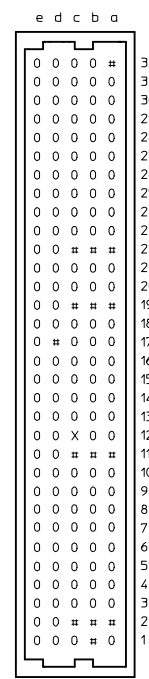
TERMINAL TYPE (CPF)  
COMPLIANT PRESSFIT

RECOMMENDED PCB LAYOUT  
COMPONENT SIDE



NOTE:

- 1) MATERIAL:-  
HOUSING : THERMOPLASTIC POLYESTER, GLASS FILLED, UL94V-0  
COLOUR: PEBBLE GREY, RAL 7032  
  
TERMINAL - PHOSPHOR BRONZE
- 2) FINISH:  
CONTACT ZONE : 30 MICRO INCH MIN Au (APPLIED OVER 3.8 MM MIN ALONG PIN)  
UNIFORMLY APPLIED OVER 50 MICROINCH MIN NICKEL (Ni)  
  
PRESSFIT ZONE : 40 MICROINCH MIN OF TIN-LEAD (SnPb)
- 3) CONNECTOR MUST MEET BELLCORE GR1217-CORE UNCONTROLLED ENVIRONMENT LEVEL 3 REQUIRED
- 4) CUT FACES OF TIP WITHOUT PLATING PERMITTED
- 5) MATERIAL NUMBER, BATCHCODE SHALL BE PRINTED ON THE CONNECTOR
- 6) PRODUCT SPECIFICATION : PS-36577-001



PIN STAGING INSERTION TABLE

CONTACT LENGTH	TERMINAL LENGTH (L)	TERMINAL TYPE	SYMBOL
LMEB 4.0 MM	4.0 MM	CPF	0
STD 4.8 MM	4.0 MM	CPF	#
NO PIN N/A	NO PIN	NONE	X

EC NO. 2001-0073 EC NO. S 24/06/03 CHNG. S 24/06/03 APPROV. 27/07/03	QUALITY SYMBOLS MAJOR CRITICAL	GENERAL TOLERANCES: (UNLESS SPECIFIED)	SCALE DESIGN UNITS 2 : 1 mm INCH	DRAWN BY & DATE S.S 03/04/03	TITLE: ASSEMBLY DIN 41612, R MALE, 5 ROW, 160 POS, PRESSFIT WITHOUT MOUNTING HOLES	DIMENSIONS: mm INCH mm ONLY	SHT REV REVISE ON CAD ONLY
		4 PLACES 3 PLACES +0.05 2 PLACES +0.10 1 PLACE +0.15	CHECKED BY & DATE G.L 03/04/03	APPROVED BY & DATE G.L 03/04/03	CAD FILENAME SD-36577-002.MI	MATERIAL NO. 36577-0002	DRAWING NO. SD-36577-002
DRAFT WHERE APPLICABLE MUST REMAIN WITHIN DIMENSIONS		THIS DRAWING CONTAINS INFORMATION THAT IS PROPRIETARY TO MOLEX INCORPORATED AND SHOULD NOT BE USED WITHOUT WRITTEN PERMISSION.					