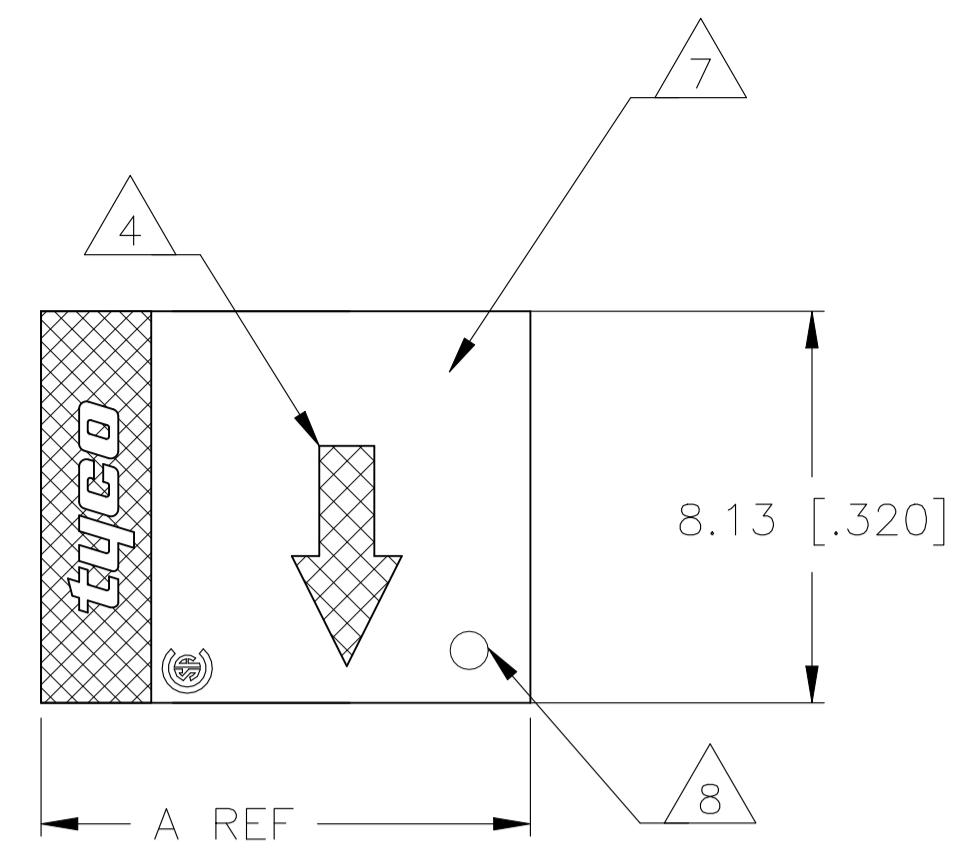
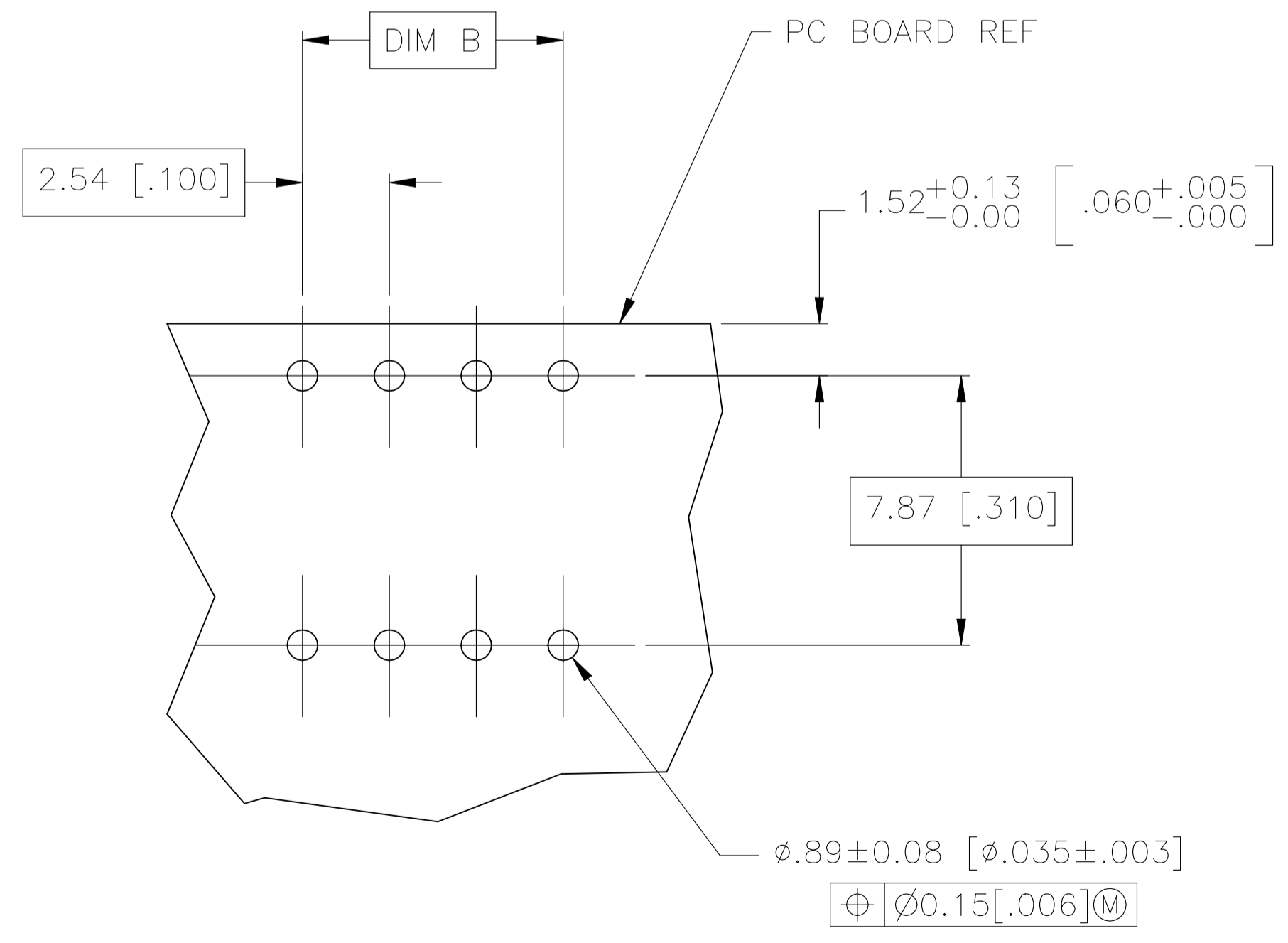
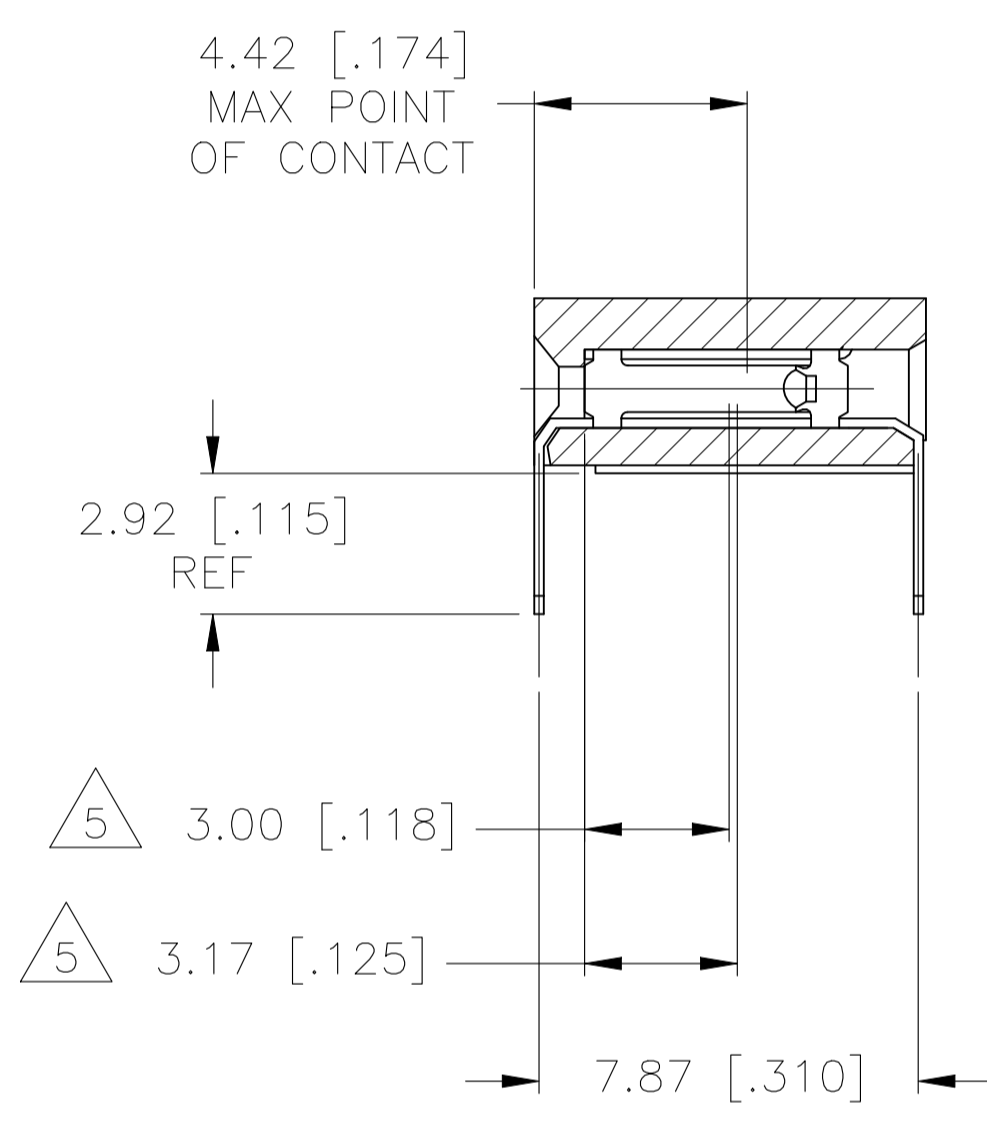
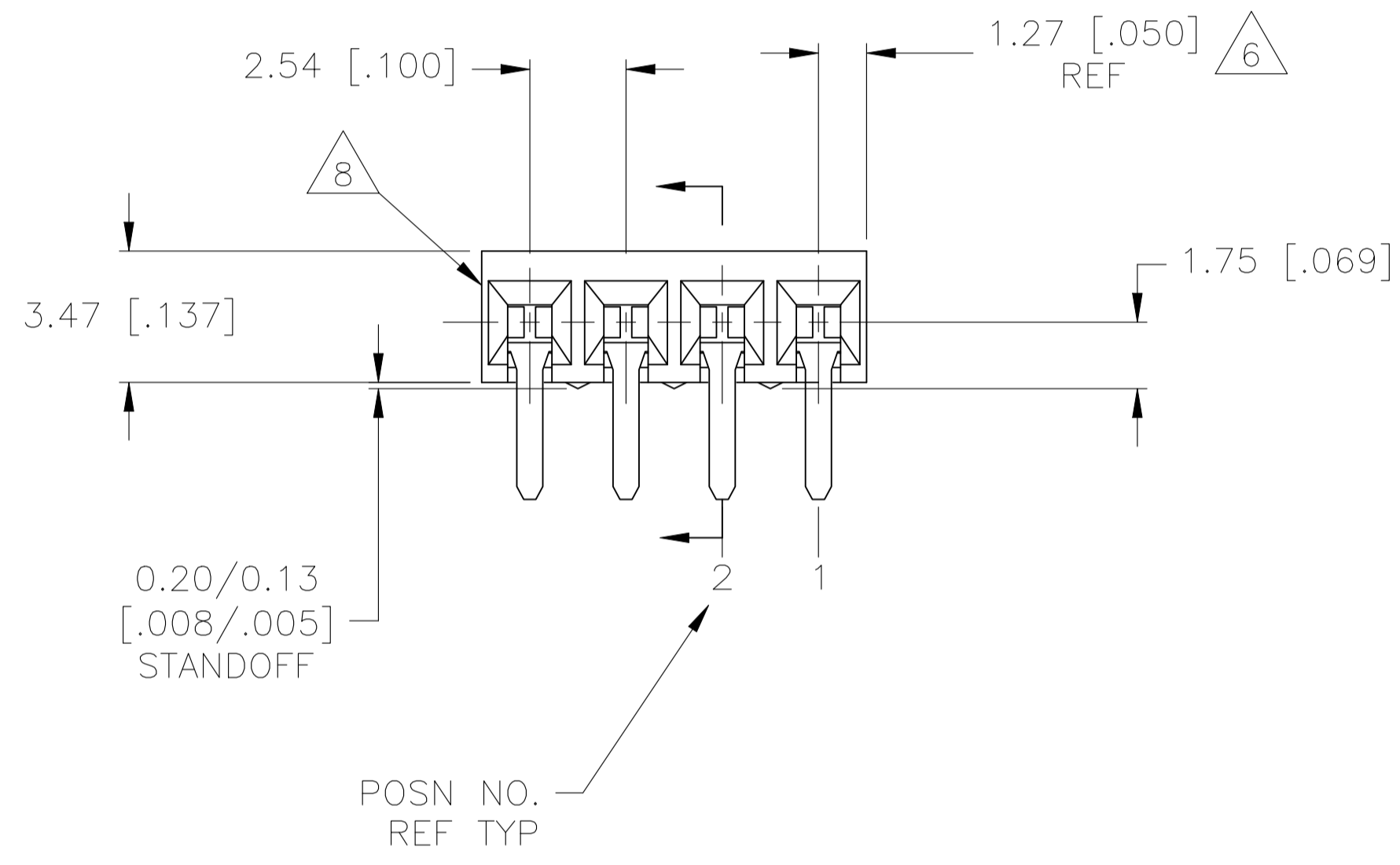


REVISIONS				
REV	DESCRIPTION	DATE	BY	APP'D
B	RESIN SUPPLIER CHANGE FOR THE HOUSING	02DEC2021	SCB	KJK



- 1 HOUSING MATERIAL: GLASS FILLED POLYESTER, COLOR- BLACK
- 2 CONTACT MATERIAL: PHOSPHOR BRONZE
- 3 CONTACT FINISH: 0.00025[.000010] THK DUPLEX PLATED GOLD ON CONTACT AREA, 0.00127[.000050] MIN THK BRIGHT TIN-LEAD OR TIN ON SOLDERLEADS, ALL OVER 0.00127[.000050] NICKEL
- 4 MOLDED IN ARROW DESIGNATES THE MATING FACE OF THE CONNECTOR
- 5 POINT OF MEASUREMENT FOR PLATING THICKNESS OF CONTACT AREA
- 6 DIMENSIONS PERTAIN TO HOUSING CAVITY CENTERLINES
- 7 DATE CODE AND PART NUMBER MARKED IN APPROXIMATE LOCATION SHOWN.
- 8 PIN #1 INDICATOR, WHITE DOT



RECOMMENDED PC BOARD LAYOUT

17.78[.700]	20.32[.800]	8	1977215-7
B	A	NO. OF POSN	ASSEMBLY PART NUMBER

THIS DRAWING IS A CONTROLLED DOCUMENT.

DIMENSIONS: mm	TOLERANCES UNLESS OTHERWISE SPECIFIED:	DIN M. BINNER 01NOV07	CHK J. OLSON 01NOV07	APVD J. OLSON 01NOV07	NAME		
0. PLC ± -	1. PLC ± -	TE Connectivity			AMPMODU MOD II RECEPTACLE ASSEMBLY, HORIZONTAL, .100 CL, SINGLE ROW, CLOSED-ENTRY, SHORT POINT OF CONTACT, END-TO-END STACKABLE		
2. PLC ± -	3. PLC ± 0.13(.005)						
4. PLC ± -	ANGLES ± -						
MATERIAL						FINISH	WEIGHT
1 2 3		1 2 3	A1 00779	C=1977215	SCALE 5:1	SHEET 1 OF 1	REV B