

## FLAT HINGE - LEAF HINGE

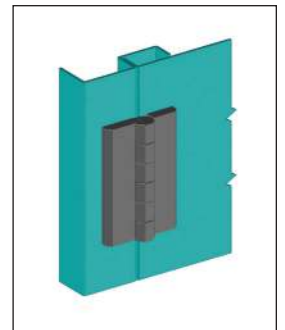
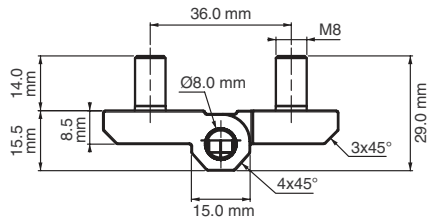
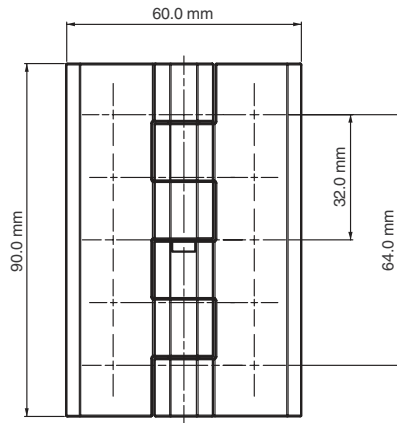


### Specifications

- Material:  
Body: Zinc Alloy (Zamak) DIN-EN 1774-ZnAl4Cu1C45  
Pin: Stainless Steel  
Screw: Steel
- Finish: See Chart

### Features

- Generally used for plain / flush-mounted doors and insulated panels
- Provides strong installation by 6 pcs. M8 bolts
- Opening angle 270°
- Applications: Generators, machinery covers, electric panels



Item Number	Hinge Rotation	Material	Finish	Thread
90011	270°	Zinc Alloy	Chrome	M8
90012	270°	Zinc Alloy	Black	M8