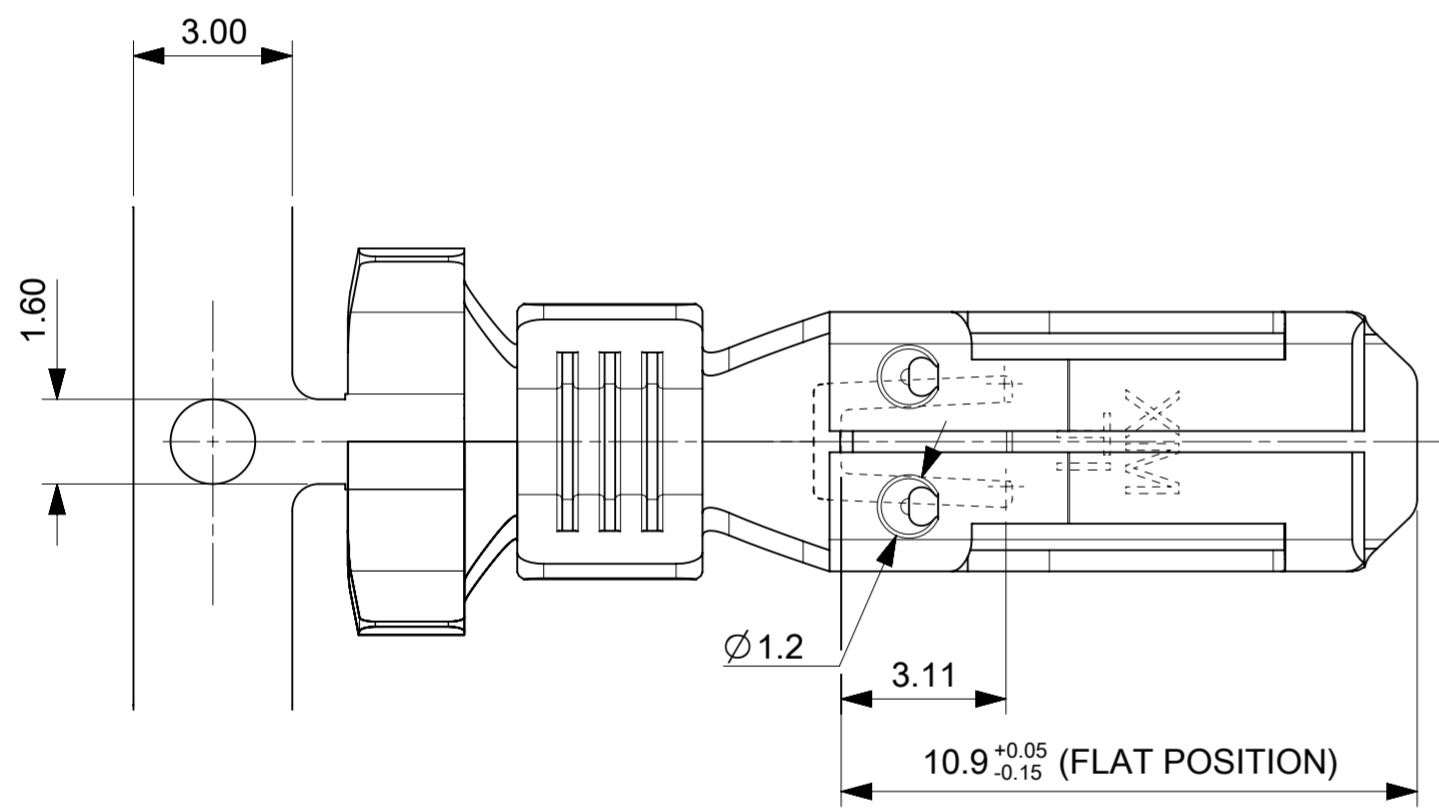


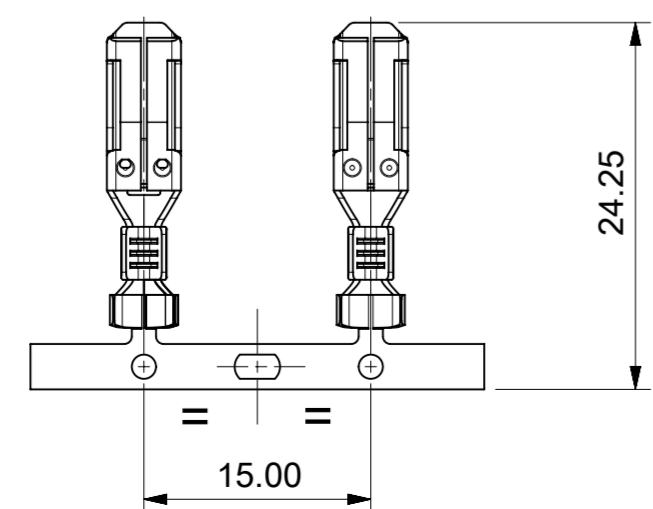
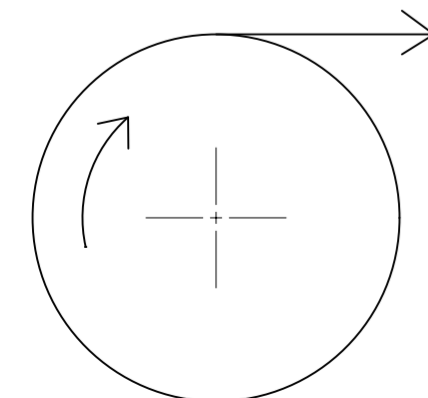
SECTION A-A

SECTION B-B



P/N	PLATING	MATERIAL	WIRE RANGE	INS. RANGE	DIMENSION				
					A	B	C	D	E
94518-0100	PLAIN	BRASS	0.5 - 1.0	2.2 - 2.8	4.5	4.5	3.0	3.0	/
94518-0101	TIN								
94518-0200	PLAIN	BRASS	1.0 - 2.5 FOR SINGLE DOUBLE CABLES	2.6 - 3.8	5.5	5.5	4.1	4.3	/
94518-0201	TIN								
94518-0400	PLAIN	BRASS	1.5 - 3.0 FOR DOUBLE CABLES	-	7.3	5.1	5.2	4.0	1.8
94518-0401	TIN								
94518-0300	PLAIN	BRASS	4.0	3.4 - 3.7	5.5	5.5	5.0	5.1	/
94518-0301	TIN								

DIRECTION OF UNREELING



PACKAGING: REFER 945180001-PK

STD. DESCRIPTION: HNF TERM (material-plating-wire gauge)

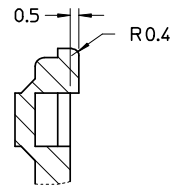
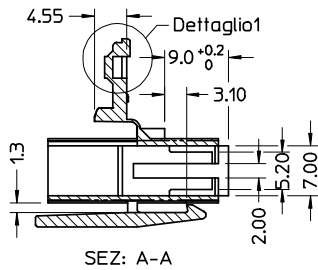
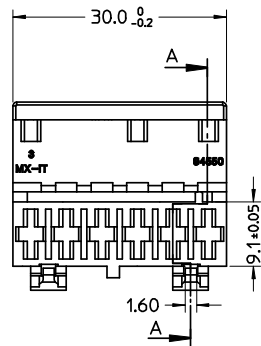
FUNCTIONAL SYMBOLS	THIS DRAWING CONTAINS INFORMATION THAT IS PROPRIETARY TO MOLEX ELECTRONIC TECHNOLOGIES, LLC AND SHOULD NOT BE USED WITHOUT WRITTEN PERMISSION										
	DIMENSION UNITS	SCALE	CURRENT REV DESC: REMOVED PN: 94518-0120,-0121,-0220,-0221								
$\nabla_A = 0$	mm	7:1	<p>GENERAL TOLERANCES (UNLESS SPECIFIED)</p> <p>ANGULAR TOL ± 2.0°</p> <p>EC NO: 657968</p> <p>DRWN: SCV 2021/03/09</p> <p>CHK'D: MBN02 2021/03/15</p> <p>APPR: SDEVITT 2021/03/22</p>								
$\nabla_C = 0$	DIVISIONAL SYMBOLS										
$\nabla_P = 0$	4 PLACES ±	3 PLACES ±	<p>INITIAL REVISION:</p> <p>DRWN: AKABADI 2021/01/07</p> <p>APPR: SDEVITT 2021/02/25</p>								
	2 PLACES ± 0.1	1 PLACE ± 0.2									
	0 PLACES ±		DRAFT WHERE APPLICABLE MUST REMAIN WITHIN DIMENSIONS			THIRD ANGLE PROJECTION	DRAWING	SERIES	MATERIAL NUMBER	CUSTOMER	SHEET NUMBER
			A2-SIZE		94518	SEE TABLE	GENERAL MARKET		1 OF 1		

molex

RAST 5 CRIMP TERMINAL

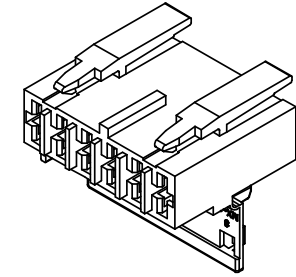
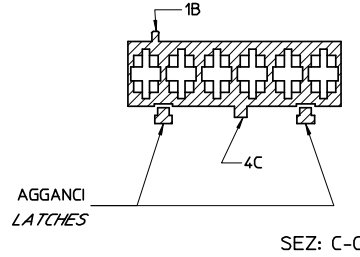
PRODUCT CUSTOMER DRAWING

DOCUMENT NUMBER: 945180001
DOC TYPE: PSD
DOC PART: 000
REVISION: A1



Dettaglio1
SCALA 5:1

CONFIGURAZIONE POLARIZZAZIONI
POLARIZATION CONFIGURATION

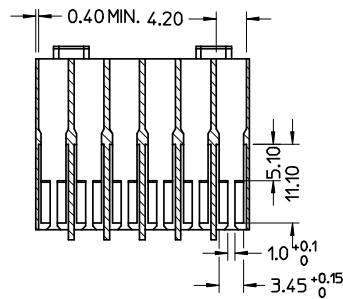
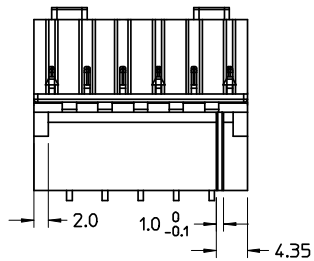


NOTE:

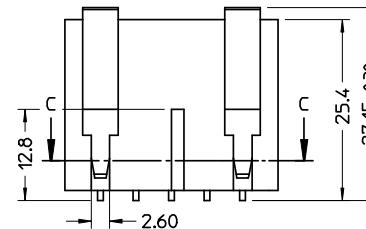
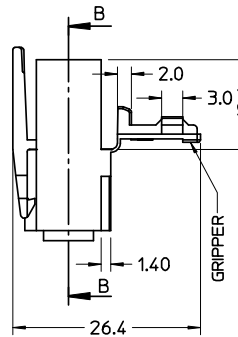
- USATO CON TERMINALE 94518-0XXX E 94549-0XXX
- SPECIFICA DI RIFERIMENTO PER IL CONNETTORE PS-94550-001
- PER CARATTERISTICHE DI CRIMPATURA RIF. SD-94518-005 E SD-94549-001
- FORZA DI DISACCOPIAMENTO CONNETTORE (TRAZIONANDO DAI CAVI SENZA AZIONARE L'AGGANCI): 60 N MIN.
- SPESSORE MINIMO PARETI CONNETTORE 0.40 mm.

NOTE:

- USED WITH TERMINALS 94518-0XXX AND 94549-0XXX
- REFER TO PS-94550-001 FOR CONNECTOR SPECIFICATION
- REFER TO SD-94518-005 AND SD-94549-001 FOR CRIMPING CHARACTERISTICS
- CONNECTOR DISENGAGEMENT FORCE (PULLING BY THE WIRES, WITHOUT ACTUATING THE LATCH): 60 N MIN.
- MINIMUM CONNECTOR WALL THICKNESS 0.40 mm.



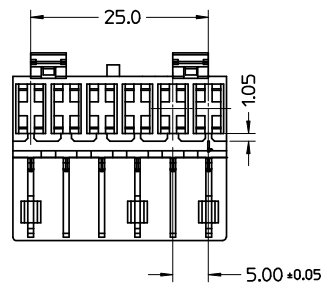
SEZ: B-B



MATERIALE: NYLON 6.6 GWT 750°C sec. IEC 60335-1
TEST METHOD IEC 60695-2-11 colore naturale

MATERIAL: NYLON 6.6 GWT 750°C sec. IEC 60335-1
TEST METHOD IEC 60695-2-11 natural

CONFEZIONE: Box da 1100 Pz.
PACKAGING: 1100 pcs in carton box



SPQ =1100

Std. Descr: 'HSG W/SEC LOCK AND EXT LATCHES 6 CKT _____ COLOR'

EC NO: Z2005-0066 DRWN:FGOTTARD2004/11/02 CHKD:RSANDANO2004/11/02 APPR:GZUIN 2004/11/02	QUALITY SYMBOLS ▽ 0 ▽ 0	GENERAL TOLERANCES (UNLESS SPECIFIED)		SCALE 2:1	DESIGN UNITS METRIC	FIRST ANGLE PROJECTION	REVISE ON CAD ONLY	
		4 PLACES ± --- ± ---	3 PLACES ± --- ± ---	DIMENSION STYLE MM ONLY		TITLE HSG 6 CKT WITH SEC.LOCK AND EXTERNAL LATCH		
		2 PLACES ± 0.10 ± ---	1 PLACE ± 0.2 ± ---	DRAWN BY FGOTTARD	DATE 2004/10/29	MATERIAL NO. 94550-4106		
		ANGULAR ± 2 °		CHECKED BY RSANDANO	DATE 2004/10/29	DOCUMENT NO. SD-94550-022	SHEET NO. 1 OF 1	
DRAFT WHERE APPLICABLE		APPROVED BY GZUIN		DATE 2004/10/29	THIS DRAWING CONTAINS INFORMATION THAT IS PROPRIETARY TO MOLEX INCORPORATED AND SHOULD NOT BE USED WITHOUT WRITTEN PERMISSION			
MUST REMAIN WITHIN DIMENSIONS		A2						