



Section 1

Introduction

The AT90ICEPRO is a real time In-Circuit Emulator (ICE) for all AT90S1200, -S2313, -S2323, -S2333, -S2343, -S4414, -S4433, -S4434, -S8515 and -S8535 devices. It can be upgraded to support future AVR[®] parts. It is controlled by AVR Studio, which is a professional front-end for both high-level and assembly level debugging. AVR Studio is described in Section 1 in the Development Tools User Guide and must be studied carefully in order to take full advantage of this product.

The AVR AT90ICEPRO ICE system consist of the following elements:

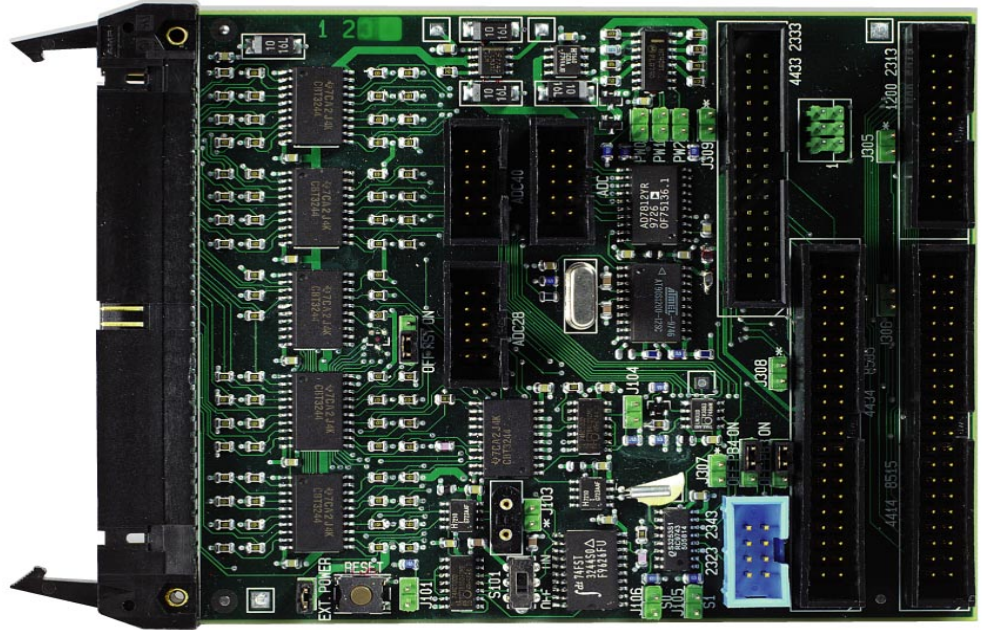
- AVR ICE Unit
- Pod card AT90ADCPOD
- Pod Cable
- AT90S1200/-2313 probe with cable (DIL20)
- AT90S4414/-8515/-4434/-8535 probe with cable (DIL40)
- AT90S2323/-2343 probe with cable (DIL8)
- AT90S2333/-4433 probe with cable (DIL28)
- A RS-232 cable
- A Power Supply unit
- Documentation

Figure 1-1. AVR AT90ICEPRO with AT90ADCPOD



The AVR ICE unit is the main part of the AVR AT90ICEPRO system. AVR Studio, which runs on a host PC, controls the ICE unit. The AVR ICE unit must be connected to an available RS-232 port on the host PC with the supplied RS-232 cable. AVR Studio automatically detects if there is an emulator present on one of the PC's serial ports. Note that if no ICE is found, AVR Studio will show "Simulator" in the lower right corner of the main window. If the ICE is found, "AVR Emulator" will be indicated and your connections are correct. AVR Studio will issue a warning if a program previously run in emulator mode is started in simulator mode.

Figure 1-2. AT90ADCPD



AT90ADCPD is the pod card used for the processors, AT90S1200, -S2313, -S2323, -S2333, -S2343, -S4414, -S4433, -S4434, -S8515, and -S8535. The pod contains the analog comparator, the analog to digital converter, a clock circuit for handling of XTAL and TOSC signals from the target application, a reset button and a voltage conversion circuit. 11 different jumpers and one switch can be set on the pod card to select between the different functions.

The pod card is connected to the AVR ICE unit using the pod cable (the wide cable), and to the user application using the 8-pin, 20-pin, 28-pin, or 40-pin probe.

Note: It is extremely important that the probe cable is correctly connected to the user application. The colored wire of the probe cable indicates pin 1 of the AVR device.

Figure 1-3. AVR ICEPRO Front Panel



Figure 1-4. AVR ICEPRO Back Panel





Section 2

Preparing the AVR AT90ICEPRO System for Use

Complete the following procedure in order to start using the AVR ICE.

Before connecting the probe cable to the user application:

- Connect the pod card to the AVR ICE unit with the pod cable.
- Connect the appropriate probe to the pod.
- Connect the RS-232 cable between the AVR ICE unit and an available serial port on the host PC.
- Connect power supply (9 - 15 V_{DC}) to the AVR ICE unit.
- Turn the power on and check that the red LED marked "POWER" is lit.
- After a short time (≤10 sec.), the green LED marked "READY" will be lit and the AVR ICEPRO system is ready.
- Turn off the power.

Plug the probe into the application, paying attention to connect it correctly. If it is not connected correctly, the AVR AT90ICEPRO system may be damaged. The colored wire of the probe cable indicates pin 1 of the AVR device.

- When the probe is correctly connected to the application, check the jumper marked "EXT. POWER" on the probe circuit board. If the application is powered from the AVR ICE unit, the jumper must be mounted. If the application is going to use its own power supply, the jumper must be removed.
- Make sure that all other jumpers and switches (clock, timer, analog comparator and device) are set according to your application. Details on these jumper settings are located in Section 4.
- When all jumpers are set correctly, turn on the power. When the green LED is lit, the AVR AT90ICEPRO system is ready for use. Start AVR Studio, and begin your AVR emulation session.





Section 3

Select Between Different AVR Devices

The selection between different AVR devices must be done both in AVR Studio and on the pod card. In AVR Studio, choose the device you want to emulate in the Device menu in Emulator Options. On the pod card, make sure to use the appropriate probe cable (20 pins for 20 pin device and so on) and connect your application to the connector labeled with the correct part number. Please note that it may damage your AT90ICEPRO if you plug the probe cable into the wrong connector.

To use AT90S2323 or AT90S2343, the jumpers on the connectors labeled PB3 and PB4 must be set. Table 3-1 below shows how to set these jumpers.

Table 3-1. Jumper Settings when Selecting between AT90S2323 and AT90S2343

Device	PB3	PB4
AT90S2323	OFF	OFF
AT90S2343 with external clock	OFF	ON
AT90S2343 with internal clock	ON	ON

For other devices these jumpers are not used.

To use AT90S2333, AT90S4433, AT90S4434 or AT90S8535, the 10 lead cable on the pod must be mounted. Table 3-2 below shows where to connect this cable.

Table 3-2. Connections of 10-lead cable

Device	10-lead cable
AT90S2333 or AT90S4433	ADC and ADC28
AT90S4434 or AT90S8535	ADC and ADC40

For other devices this cable is not used.





Section 4

The AVR AT90ICEPRO Power System

The AVR AT90ICEPRO system has an internal power regulator that can deliver 15W of power at 5V. The AVR ICE itself uses about 10W, so if the user application is powered from the AVR AT90ICEPRO system, it can not use more than 5 W (i.e. 5V/1A). If this value is exceeded, the AVR AT90ICEPRO system may be damaged or not work properly.

The power supply delivered with your AT90ICEPRO is dimensioned to meet the requirements of the emulator. If another power supply is used, it should supply a voltage between 9 and 15 V_{DC}, and minimum 20W. The battery eliminator connector on the AVR AT90ICEPRO system is a standard type with 2.1 mm center tap. Ground should be connected to the center tap.

If the target application needs to be powered from the emulator, the jumper labeled “EXT.POWER” should be mounted. Jumpers labeled “PW2”, “PW1”, and “PW0” can all be removed when external power is selected.

If the target application runs on a supply voltage other than 5V, and you want to emulate your system at that voltage, the jumper named “EXT.POWER” must be removed. The pod card must also be set to convert voltages to the required voltage. Use Figure 13-2 to find what the settings on the jumpers named “PW2”, “PW1”, and “PW0” should be.

Figure 4-1. Jumper Settings

Target VCC	PW2	PW1	PW0
2.7 - 2.9 V	■	■	■
3.0 - 3.3 V	■	■	:
3.4 - 3.7 V	■	:	■
3.8 - 4.1 V	■	:	:
4.2 - 4.5 V	:	■	■
4.6 - 4.8 V	:	■	:
4.9 - 5.1 V	:	:	■
5.2 - 5.5 V	:	:	:





Section 5

The AVR AT90ICEPRO Clock System

The AVR AT90ICEPRO system can use one out of three available clock sources; the programmable internal clock in the ICEPRO, a crystal or an external oscillator in the user application.

The internal clock can be adjusted between 400 kHz and 20 MHz. Any frequency within this range can be selected, and will be produced with an accuracy better than 200 PPM for most frequencies.

Note: The breakpoint logic will not work properly at clock frequencies above 10 MHz.

If an external clock source in the user application will be used, this can be in the range between 32.768 kHz and 10 MHz. To use an external clock source, select External Oscillator in the Emulator Options menu in AVR Studio. It is important to select the proper range in the Clock Range menu to make the clock system work properly with an external crystal.

On the pod card, the XTAL pins is connected to the ICE by using the 2-wire cable. Connect from J103 to the 2-pin header nearest the pod cable connector you are using (see Table 5-1).

Table 5-1. Pin Connection

Device	Connect J103 and ...
S1200 or S2313	J305
S4414 or S8515	J306
S2313 or S2343	J307
S4434 or S8535	J308
S4433 or S2333	J309

Note: Pin 1 on each connector is labeled with *.

If the clock source from the user application is a crystal, jumper J101 must be left open. If the clock source from the user application is an oscillator, jumper J101 must be shorted with a jumper. The switch S101 must be in position OFF in both cases.

Long leads from your external crystal to the oscillator circuit on the pod may cause you problems. It is possible to mount a crystal in the socket near J103. Do not use the 2-wire cable if you choose this option. If the crystal frequency is below 1.000 MHz, this should be selected in the Clock Range menu in Emulator Options in AVR Studio and S101 should be in position ON. S101 should be in position OFF under all other circumstances.

Note: A crystal cannot be used with S2343 devices.





Section 6

The AVR AT90ICEPRO Reset System

The AVR AT90ICEPRO system has two independent reset systems. One is for the AVR AT90ICEPRO system itself, and the other is for the emulated AVR device. The ICE reset button is placed on the back panel of the box. The button is labeled "ICE RESET", and is hidden in the back panel for safety reasons. If the emulator starts to behave unpredictably, use a thin tool to push this reset button. The green LED will be turned off for a while, and will be switched on again when the system is ready. When the ICE reset button is pressed, the program memory is cleared, thus the project file must be closed in AVR Studio and then reopened.

The AVR reset system can reset the emulated device when the device is running and stopped. This reset can be activated from several sources:

- The push-button marked "AVR RESET" on the back panel of the AVR ICE unit (Only when running)
- The push-button marked "RESET" on the Pod (Only when running)
- The reset button in AVR Studio. Note that the reset button in AVR Studio will stop the emulation process if it is running when the button is pushed.
- A reset button placed in the user application (Only when running)

Please note that only a reset from the user application will reset other components in your system dependent on the AVR's RESET pin.





Section 7

The Timer Oscillator

Note: This section only applies to S4434 and S8535.

A 32.768 kHz crystal is mounted on the pod for use with the Timer oscillator. It is impossible to emulate the Timer oscillator with a crystal on the target application due to the long leads from the target application to the oscillator circuit. If an external oscillator output is used as the clock source of the Timer oscillator, mount a jumper on connector J104.



Section 8

The Analog Comparator

The jumpers on connectors J105 and J106, labeled S0 and S1, must be set correctly to make the analog comparator work properly.

Figure 8-1. Jumpers J105 and J106

Target VCC	S1/J105	S0/J106
S1200, S2313	■	■
S4414, S4434, S8515, S8535	:	■
S2333, S4433	■	:





Section 9

Connectors not Described in this Document

The connectors not described in this document are intended for future use. The connector labeled RST\ must have its jumper placed in position ON. The 6-pin header connector is intended for possible upgrades of the SW on your pod card.



Section 10

Trace Buffer

The AVR AT90ICEPRO has a 32K x 96-bit trace buffer which stores information about program execution for every clock cycle. When the emulator is stopped, this trace buffer can be examined to extract information about the history of the emulated program. The details on which data are stored and how to retrieve them are described in the AVR Studio User Guide. When the trace buffer is full, it will wrap around and start overwriting the oldest entries.

The trace buffer can be turned on or off at any program line. This makes it possible to skip tracing delay loops and other subroutines which would otherwise fill the trace memory with unnecessary data. The trace buffer is inactive by default. To trace an entire program, a "Trace on" marker should be placed on the first line of the program.





Section 11

External Triggers

The AVR AT90ICEPRO has five external trigger inputs and five trigger outputs, all located on the AUX connector next to the pod connector.

- The trigger inputs can act as break signals to the emulator, and/or they can be logged in the trace buffer. If an input is enabled for breaking the emulator, a rising edge on that input is required to break the emulator.
- The trigger outputs may be set as trigger points on any instruction in the code window in AVR Studio. If enabled on an instruction, the output(s) will remain high for one AVR clock cycle when the marked instruction is executed. This can be used to trigger a logic analyzer or an oscilloscope.

The details on how to enable and setup triggers and mask registers are presented in the AVR Studio User Guide.

There are three global mask registers that are used to control the behavior of the triggers:

- The *Trigger Output Global Mask Register* controls which of the output pins are allowed to be controlled by the trigger settings in the code. An output pin which is disabled will remain low even if a trig point for that particular pin is set in the code.
- The *Trigger Input Global Mask Register* controls which of the input pins are allowed to break the emulator. If more than one line is enabled, the emulator will break on either one, but will not store any information about which input caused the event unless you trace the trigger inputs. Unused lines must either be pulled low or disabled in the Trigger Input Global Mask Register. Otherwise, the emulator will break on the first line (on start up, all lines are disabled, so this only applies if input triggers are enabled by the user).
- The *External Trace Mask Register* controls which of the input pins will be stored in the trace memory. Input pins that are not enabled in this register will be stored as zero in the trace memory. To be traced, input signals must be valid and stable at the rising edge of the AVR clock and for 50 ns thereafter. It is also necessary that the trace buffer is enabled and turned on.

The trigger input and the external trace are two independent functions acting on the same input pins. Note that the trigger logic is asynchronous and edge driven, whereas

External Triggers

the trace logic is clocked on the AVR clock. The emulator may break on a glitch signal which is too narrow to be traced.



Section 12

Troubleshooting Procedures

If the AVR AT90ICEPRO system starts to behave unpredictably, try one of the following:

- Push the Stop button in AVR Studio, then the reset button, and then try again.
- Push the "ICE RESET" button on the back panel and restart AVR Studio.
- Turn the power OFF, and then ON again and restart AVR Studio.
- Turn off power and disconnect your target application. Then try again. If everything is OK now, this indicates that something in your target application is disturbing normal operation.
- Turn off power and disconnect your pod card. Then try again. If everything is OK now, this indicate that your settings on the pod card are wrong and disturbs normal operation.

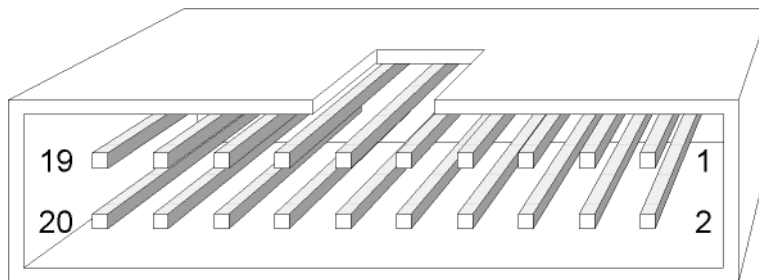
If the above steps are unsuccessful, please contact your nearest ATMEL, sales office, or write an e-mail to avr@atmel.com.



Section 13

AVR AT90ICEPRO Connector Description

Figure 13-1. Logic Analyzer 1 Connector



13.1 Logic Analyzer 1 Connector Description

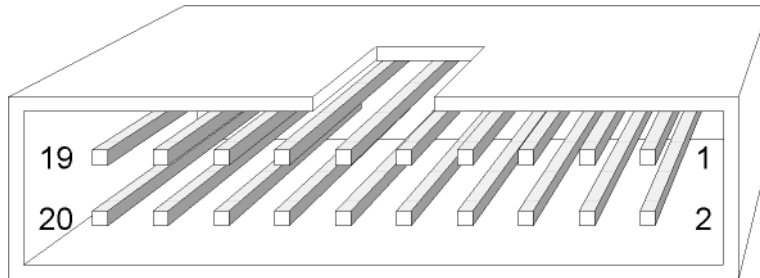
The connector marked “Logic Analyzer 1” on the back panel of the AVR ICE unit has the following pin-out with signals from the instruction pre-fetch bus:

Table 13-1. Pin-Out Logic Analyzer 1

SIGNAL	Logic Analyzer 1		SIGNAL
AVRCLK	Pin 1	Pin 2	Low
Low	Pin 3	Pin 4	Low
Low	Pin 5	Pin 6	Low
Low	Pin 7	Pin 8	A11
A10	Pin 9	Pin 10	A9
A8	Pin 11	Pin 12	A7
A6	Pin 13	Pin 14	A5
A4	Pin 15	Pin 16	A3
A2	Pin 17	Pin 18	A1
A0	Pin 19	Pin 20	GND

Note: AVR devices with less than 8K bytes (4K words) program memory do not use all 12 address lines.

13.2 Logic Analyzer 2 Connector Description *Figure 13-2. Logic Analyzer 2 Connector*



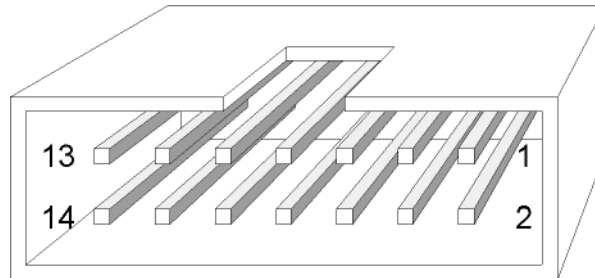
The connector marked “Logic Analyzer 2” on the back panel of the AVR ICE unit has the following pin-out with signals from the instruction pre-fetch bus:

Table 13-2. Pin-Out Logic Analyzer 2

SIGNAL	Logic Analyzer 2		SIGNAL
AVRCLK	Pin 1	Pin 2	Low
Low	Pin 3	Pin 4	D15
D14	Pin 5	Pin 6	D13
D12	Pin 7	Pin 8	D11
D10	Pin 9	Pin 10	D9
D8	Pin 11	Pin 12	D7
D6	Pin 13	Pin 14	D5
D4	Pin 15	Pin 16	D3
D2	Pin 17	Pin 18	D1
D0	Pin 19	Pin 20	GND

13.3 AUX Connector Description

Figure 13-3. AUX Connector



The connector marked “AUX” on the back panel of the AVR ICE unit is used for external triggers and has the following pin-out.

Table 13-3. Pin-Out AUX Connection

SIGNAL	AUX		SIGNAL
GND	Pin 1	Pin 2	GND
Input 0	Pin 3	Pin 4	Output 0
Input 1	Pin 5	Pin 6	Output 1
Input 2	Pin 7	Pin 8	Output 2
Input 3	Pin 9	Pin 10	Output 3
Input 4	Pin 11	Pin 12	Output 4
GND	Pin 13	Pin 14	GND



Section 14

Technical Specifications

System Unit

Physical Dimensions (H x W x D)	32.4 x 277.1 x 218.6 mm / 1.3 x 10.8 x 8.5 in
Weight	400g / 0.88 lbs.
Power Voltage Requirements	9 - 15 VDC
Power Consumption	< 15 W
ICE Power Consumption	10 W
Max. Application Power Consumption	5 W
Ambient Temperature	-40 - + 85°C (Operating) -55 - + 85°C (Non-Operating)
Relative Humidity (Non-condensing)	10 - 90% (Operating) 5 - 95% (Non-Operating)
Shock20 g, 11ms half sine
Vibration	5 g

Connections

Power

Connector	5.5 mm OD/ 2.1mm ID Center Negative
---------------------	-------------------------------------

Host

Serial Connector (RS-232)	9-pin D-SUB Female
Serial Communications Speed	9600 - 115,200 bits/s
Parallel Connector (LPT)	25-pin D-SUB Male
Parallel Communications Speed (Max)	80 kbyte/s

Pod

Emulating \leq 40 pins	one 2 x 32 Male Header
------------------------------------	------------------------

External Trigger Inputs / Outputs

Connector	2 x 7 Male Header
---------------------	-------------------

Logic Analyzer Interface

Connectors	two 2 x 10 Male Headers
----------------------	-------------------------

Clock specification

Internal Clock

Minimum frequency	400 kHz
Maximum frequency	20.0 MHz

External Crystal

Technical Specifications

Minimum frequency	32.768 kHz
Maximum frequency	10.0 MHz
<i>Operation</i>	
Minimum running speed	32.768 kHz
Maximum running speed	12.0 MHz
Minimum Single-step speed	32.768 kHz
Maximum Single-step speed	10.0 MHz
Minimum breakpoint speed	32.768 kHz
Maximum breakpoint speed	10.0 MHz
<i>Memory specification</i>	
Program Memory	8K bytes
Event Memory	8K bytes
EEPROM Memory	512 bytes
SRAM Memory	64K bytes
Register file	32 bytes
I/O area	64 bytes
<i>I/O pins</i>	
Output level	CMOS (VCC: 2.7 - 5.5 V _{DC})
Maximum sink current	24 mA
Maximum source current	10 mA
Permanent Pull-up	1.0 M Ω



Section 15

Appendix

15.1 ICEPRO Warranty

Atmel warrants that the ICEPRO in-circuit emulation system delivered hereunder shall conform to the applicable specifications and shall be free from defects in material and workmanship under normal use and service for a period of 1 year from the applicable date of invoice. The ICEPRO pod and cables included with the emulation system are warranted for a period of 30 days from the applicable date of invoice. Products which are “samples”, “design verification units”, and/or “prototypes” are sold “AS IS,” “WITH ALL FAULTS,” and with no warranty whatsoever.

If, during such warranty period, (i) Atmel is notified promptly in writing upon discovery of any defect in the goods, including a detailed description of such defect; (ii) such goods are returned to Atmel, DDP Atmel’s facility accompanied by Atmel’s Returned Material Authorization form; and (iii) Atmel’s examination of such goods discloses to Atmel’s satisfaction that such goods are defective and such defects are not caused by accident, abuse, misuse, neglect, alteration, improper installation, repair, improper testing, or use contrary to any instructions issued by Atmel, Atmel shall (at its sole option) either repair, replace, or credit Buyer the purchase price of such goods. No goods may be returned to Atmel without Atmel’s Returned Material Authorization form.

Prior to any return of goods by Buyer pursuant to this Section, Buyer shall afford Atmel the opportunity to inspect such goods at Buyer’s location, and any such goods so inspected shall not be returned to Atmel without its prior written consent.

Atmel shall return any goods repaired or replaced under this warranty to Buyer transportation prepaid, and reimburse Buyer for the transportation charges paid by Buyer for such goods. The performance of this warranty does not extend the warranty period for any goods beyond that period applicable to the goods originally delivered.

THE FOREGOING WARRANTY CONSTITUTES ATMEL'S EXCLUSIVE LIABILITY, AND THE EXCLUSIVE REMEDY OF BUYER, FOR ANY BREACH OF ANY WARRANTY OR OTHER NONCONFORMITY OF THE GOODS COVERED BY THIS AGREEMENT. THIS WARRANTY IS EXCLUSIVE, AND IN LIEU OF ALL OTHER WARRANTIES. ATMEL MAKES NO OTHER WARRANTIES, EXPRESS, IMPLIED, OR STATUTORY, including WITHOUT LIMITATION ANY WARRANTIES OF MERCHANTABILITY OR FITNESS FOR A PARTICULAR PURPOSE. THE SOLE AND EXCLUSIVE REMEDY FOR ANY BREACH OF THIS WARRANTY SHALL BE AS EXPRESSLY PROVIDED HEREIN.

15.2 Limitation on Liability

Notwithstanding anything to the contrary contained herein, Atmel shall not, under any circumstances, be liable to Buyer or any third parties for consequential, incidental, indirect, exemplary, special, or other damages. Atmel's total liability shall not exceed the total amount paid by Buyer to Atmel hereunder. Atmel shall not under any circumstances be liable for excess costs of reprourement.



Atmel Headquarters

Corporate Headquarters

2325 Orchard Parkway
San Jose, CA 95131
TEL (408) 441-0311
FAX (408) 487-2600

Europe

Atmel U.K., Ltd.
Coliseum Business Centre
Riverside Way
Camberley, Surrey GU15 3YL
England
TEL (44) 1276-686677
FAX (44) 1276-686697

Asia

Atmel Asia, Ltd.
Room 1219
Chinachem Golden Plaza
77 Mody Road
Tsimshatsui East
Kowloon, Hong Kong
TEL (852) 27219778
FAX (852) 27221369

Japan

Atmel Japan K.K.
Tonetsu Shinkawa Bldg., 9F
1-24-8 Shinkawa
Chuo-ku, Tokyo 104-0033
Japan
TEL (81) 3-3523-3551
FAX (81) 3-3523-7581

Atmel Operations

Atmel Colorado Springs

1150 E. Cheyenne Mtn. Blvd.
Colorado Springs, CO 80906
TEL (719) 576-3300
FAX (719) 540-1759

Atmel Rousset

Zone Industrielle
13106 Rousset Cedex, France
TEL (33) 4 42 53 60 00
FAX (33) 4 42 53 60 01

Fax-on-Demand

North America:
1-(800) 292-8635
International:
1-(408) 441-0732

e-mail

literature@atmel.com

Web Site

<http://www.atmel.com>

BBS

1-(408) 436-4309

© Atmel Corporation 1999.

Atmel Corporation makes no warranty for the use of its products, other than those expressly contained in the Company's standard warranty which is detailed in Atmel's Terms and Conditions located on the Company's website. The Company assumes no responsibility for any errors which may appear in this document, reserves the right to change devices or specifications detailed herein at any time without notice, and does not make any commitment to update the information contained herein. No licenses to patents or other intellectual property of Atmel are granted by the Company in connection with the sale of Atmel products, expressly or by implication. Atmel's products are not authorized for use as critical components in life support devices or systems.

Marks bearing ® and/or ™ are registered trademarks and trademarks of Atmel Corporation.

Terms and product names in this document may be trademarks of others.



Printed on recycled paper.

1024B-01/99