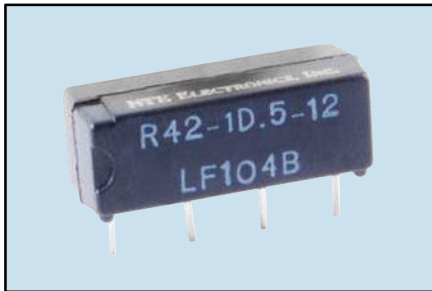


Reed Relays

R42 Series

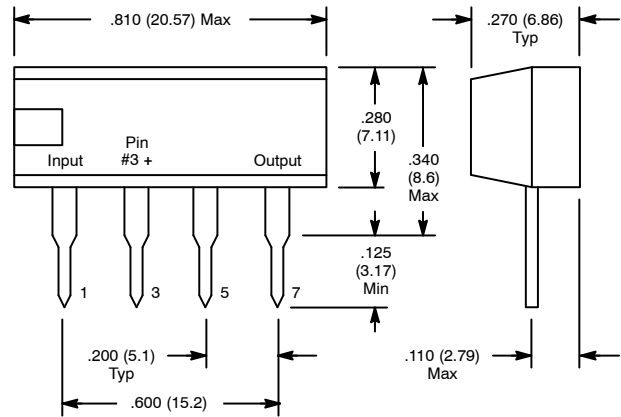
Features

- 5 VDC Version Compatible to Operate Directly from TTL or DTL Circuits
- Internal Clamping Diode
- Flame Retardant Epoxy Package
- PC Mountable

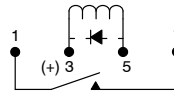


General Purpose, 500mA DC SPST-NO SIP Reed Relay.

D20



SPST-NO, 1 Form "A"



DC OPERATED								
NTE Type No.	Nom. Voltage	Contact Arr.	Coil Res. Ohms (Typ)	Nom. Pwr.	Max. Cont.	Max. Pick up	Min. Drop out	Diag No.
R42-1D .5-6	5/6 VDC	SPST-NO	500	50 mW	.5 Amp	3.8 VDC	0.5 VDC	D20
R42-1D .5-12	12 VDC	SPST-NO	850	77 mW	.5 Amp	9 VDC	1 VDC	D20
R42-1D .5-24	24 VDC	SPST-NO	2200	180 mW	.5 Amp	18 VDC	2 VDC	D20

Electrical Specifications

Contact

Rating: 0.5 Amp switching current max.
1.5 Amp carry current max.

Resistance: 200 milliohms max. initial

Coil

Coil Voltages: See Chart

Pick-up Voltage: See Chart

Drop-out Voltage: See Chart

Operational Characteristics

Timing Values **Operate Time:** 330 μ S at nominal voltage
Release Time: 150 μ S at nominal voltage

Insulation Characteristics

Dielectric Strength

Across Open Contacts: 200 VDC
Contact To Contact: 1000 VDC

Environmental Characteristics

Operating: -45°C to +85°C

Storage: -60°C to +105°C

Capacitance

Across Open Contacts: 1pf

Open Contacts To Coil: 2pf

Life

Mechanical: 5×10^6 (50,000,000) with appropriate contact protection