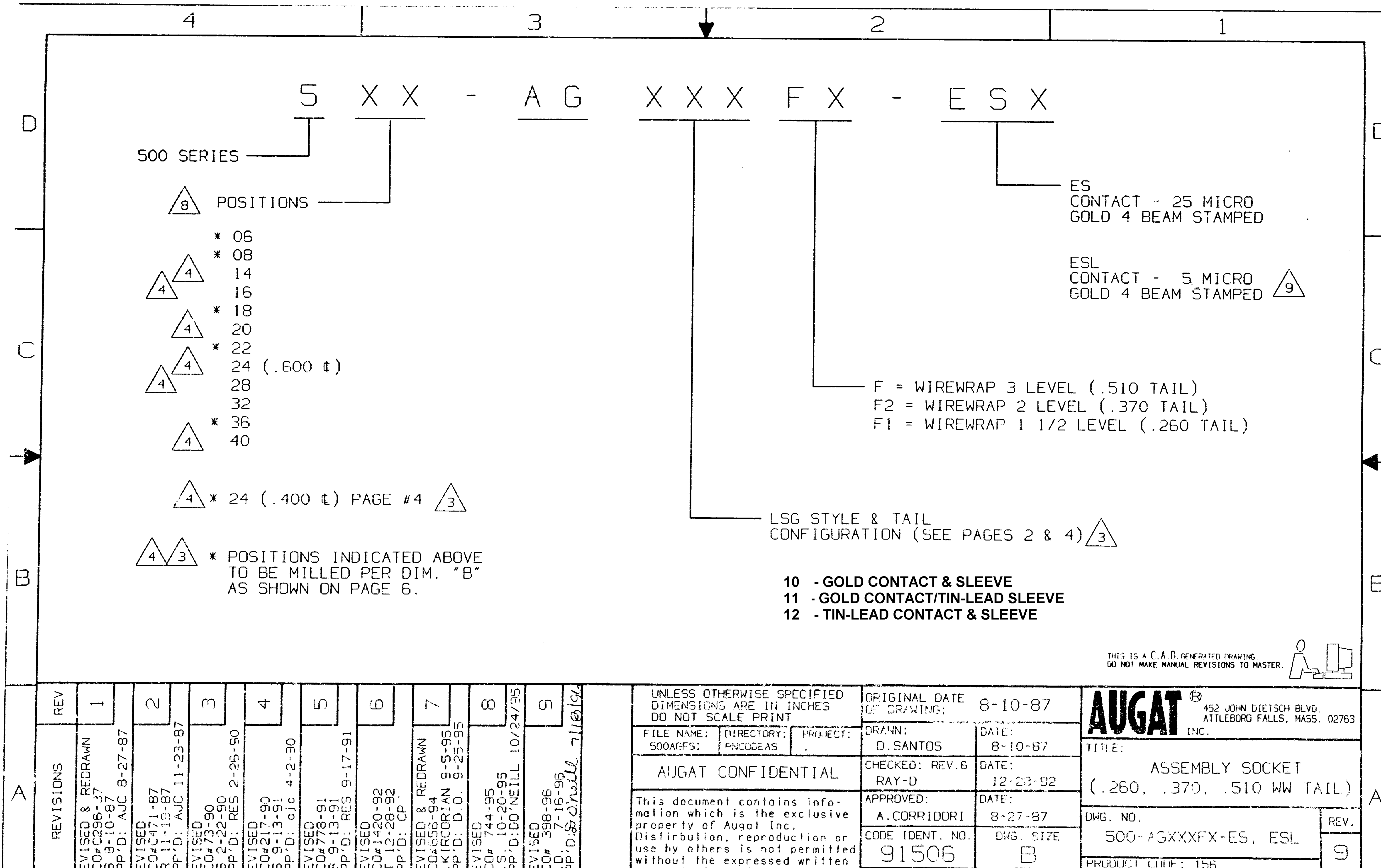
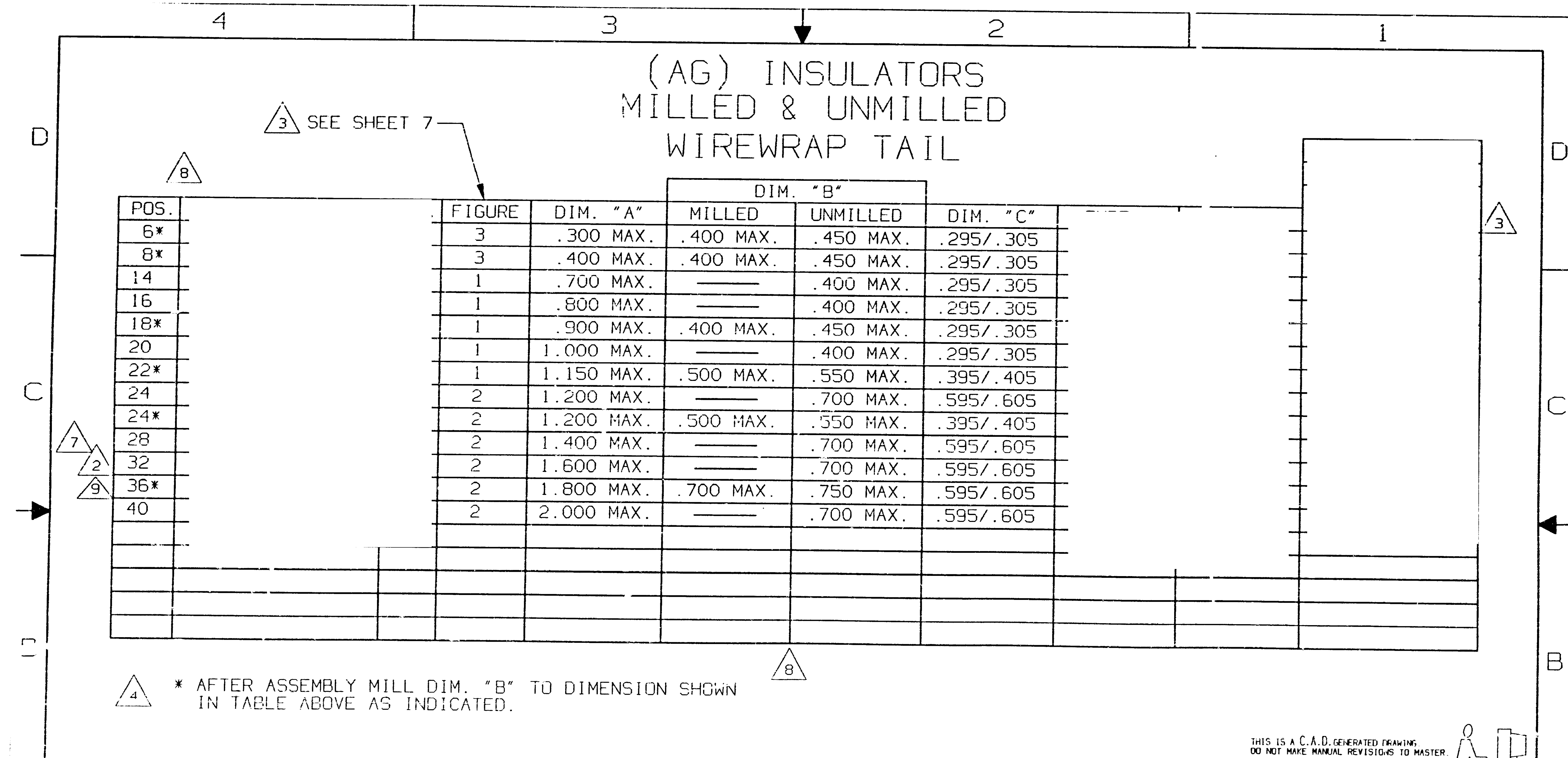


MARKED UP
PRINT
K. WRIGHT
5/8/03



MARKED UP
 PRINT
 K. WRIGHT
 5/8/03



* AFTER ASSEMBLY MILL DIM. "B" TO DIMENSION SHOWN IN TABLE ABOVE AS INDICATED.

THIS IS A C.A.D. GENERATED DRAWING.
 DO NOT MAKE MANUAL REVISIONS TO MASTER.



A	REV	SEE SHEET 1
	REVISIONS	

UNLESS OTHERWISE SPECIFIED
 DIMENSIONS ARE IN INCHES
 DO NOT SCALE PRINT

FILE NAME: 500AGF56 DIRECTORY: PNC00EAS PROJECT:

AUGAT CONFIDENTIAL

This document contains information which is the exclusive property of Augat Inc. Distribution, reproduction or use by others is not permitted without the expressed written consent of Augat Inc.

ORIGINAL DATE OF DRAWING: 8-10-87

DRAWN: D. SANTOS DATE: 8-10-87

CHECKED: REV. 6 RAY-D DATE: 12-29-92

APPROVED: A. CORRIGOR DATE: 8-27-87

CODE IDENT. NO. 91506 DWG. SIZE B

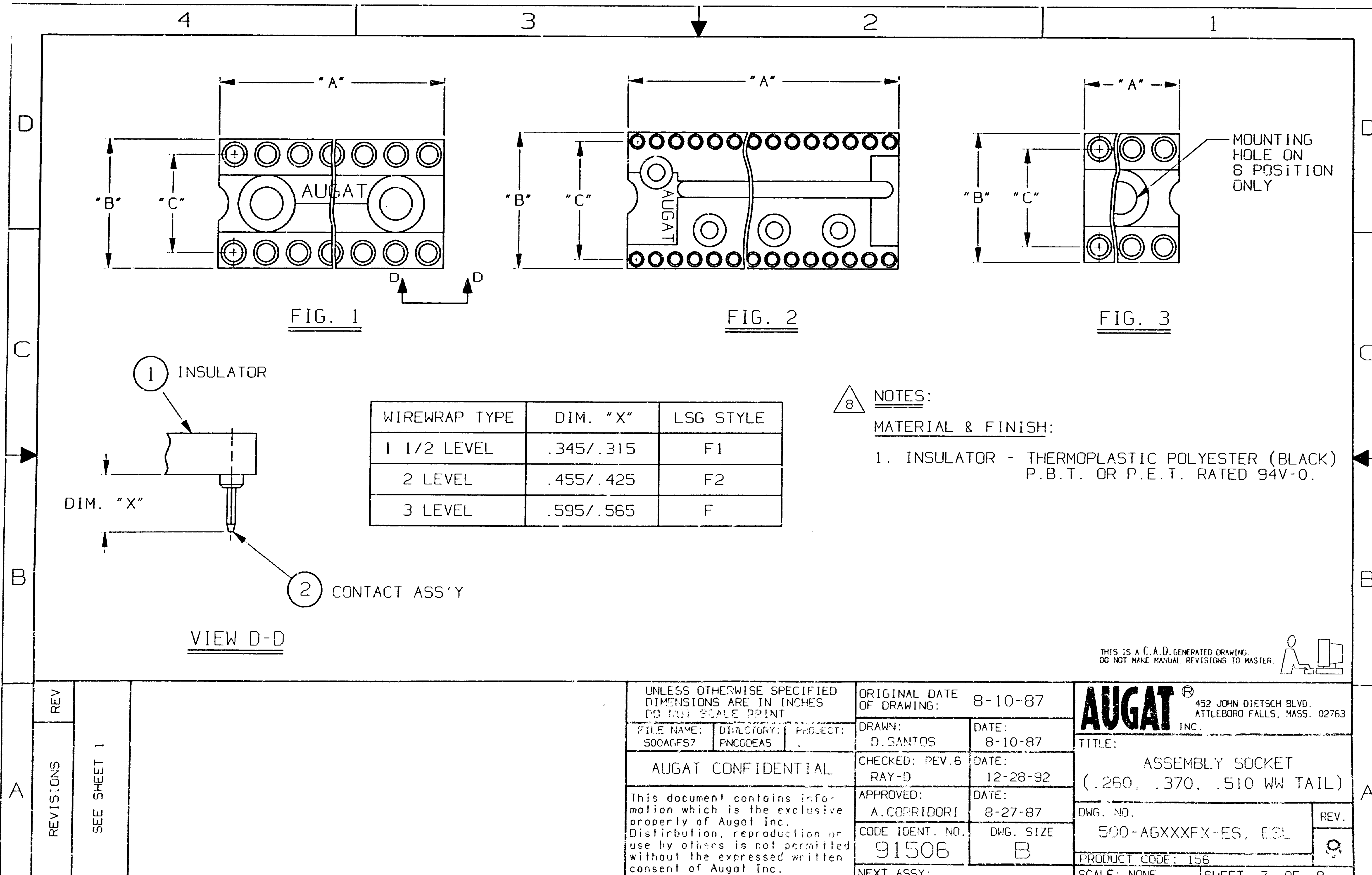
AUGAT INC. 452 JOHN DIETSCH BLVD. ATTLEBORO FALLS, MASS. 02763

TITLE: ASSEMBLY SOCKET (.260, .370, .510 WW TAIL)

DWG. NO. 500-AGXXXFX-ES, ESL REV. 9

PRODUCT CODE: 156

MARKED UP
 PRINT
 K. WRIGHT
 5/8/03



A	REV	
	REVISIONS	SEE SHEET 1

UNLESS OTHERWISE SPECIFIED DIMENSIONS ARE IN INCHES DO NOT SCALE PRINT			ORIGINAL DATE OF DRAWING: 8-10-87		AUGAT INC. 452 JOHN DIETSCH BLVD. ATTLEBORO FALLS, MASS. 02763
FILE NAME: 500AGFS7	DIRECTORY: PNCODEAS	PROJECT:	DRAWN: D. SANTOS	DATE: 8-10-87	
AUGAT CONFIDENTIAL			CHECKED: REV. 6 RAY-D	DATE: 12-28-92	TITLE: ASSEMBLY SOCKET (.250, .370, .510 WW TAIL)
This document contains information which is the exclusive property of Augat Inc. Distribution, reproduction or use by others is not permitted without the expressed written consent of Augat Inc.			APPROVED: A. CORRIDORI	DATE: 8-27-87	DWG. NO. 500-AGXXXX-ES, ESL
			CODE IDENT. NO. 91506	DWG. SIZE B	REV.
NEXT ASSY:			PRODUCT CODE: 155		SCALE: NONE