

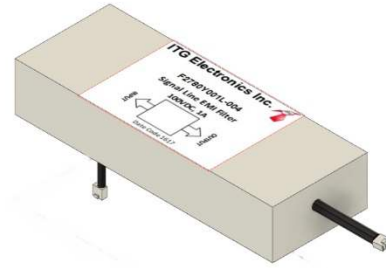


F2780Y Series



1. Features :

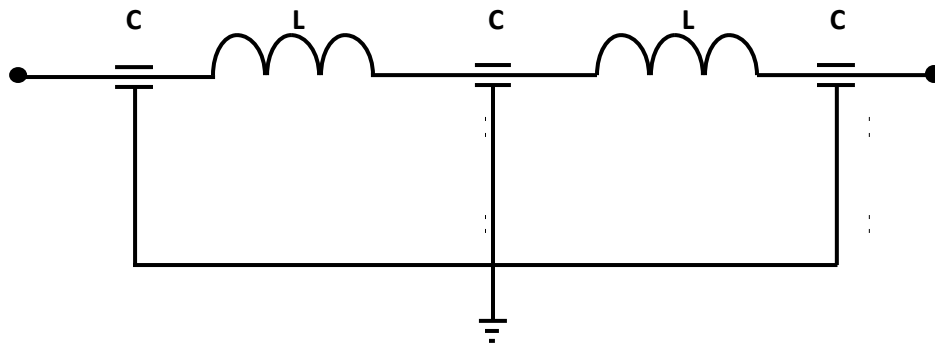
- MRI Room CAT5 filter provides clean signal and data into MRI rooms through RJ45 Connector. The filters provide 100dB attenuation from 100MHz to 10GHz.
- Voltage Rating: 100VDC
- Hi-Pot: Line to Ground: 200VDC for 2 sec
- Ambient Temperature Range: -25°C To +85°C
- Filter components are encapsulated in a plated metal enclosure
- The filters comply with UL and cUL construction requirements



2. Electrical Characteristics :

ITG Part Number	Operating Current (A) at 60°C	Output terminal(AWG)
F2780Y001L-004	1	M4

3. Schematic:



8 Identical Circuits

● New York 1 914 347 2474 ● Taipei 886 2 2698 8669 ● Kaohsiung 886 7 350 2275
 ● Japan 81 568 85 2830 ● Shenzhen 86 755 8418 6263 ● Shanghai 86 21 5424 5141 ● Hong Kong 852 9688 9767
 ● sales@ITG-Electronics.com ● www.ITG-Electronics.com Revision A.0: Jun. 20, 2017

**Due to continuous product improvement, all specifications are subject to change without prior notice. Kindly contact an ITG field application engineer or a sales representative prior to purchase.*

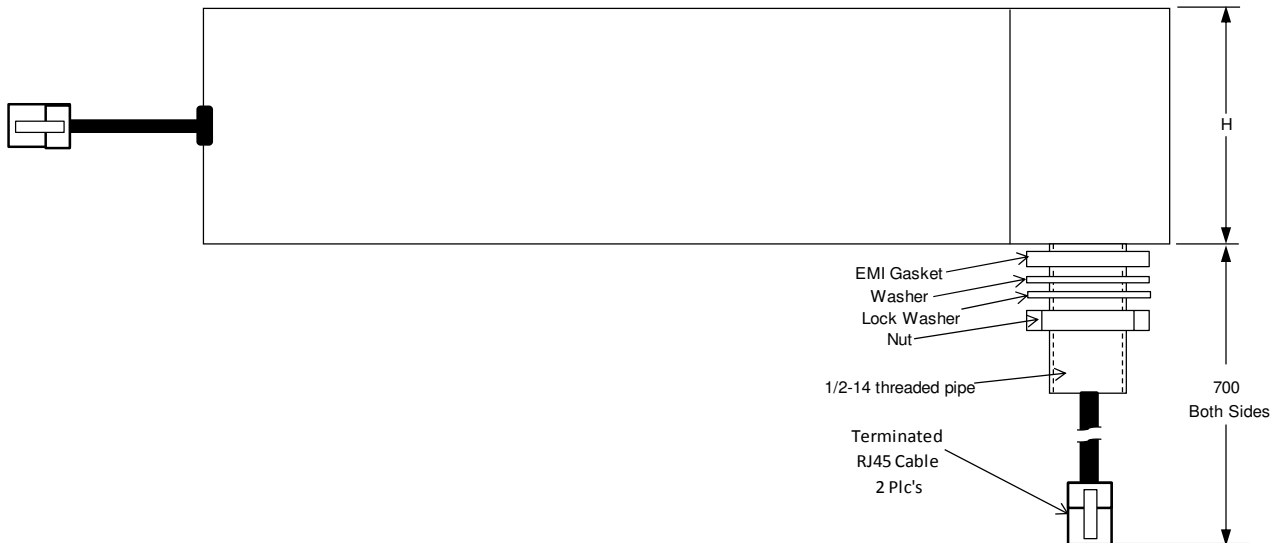
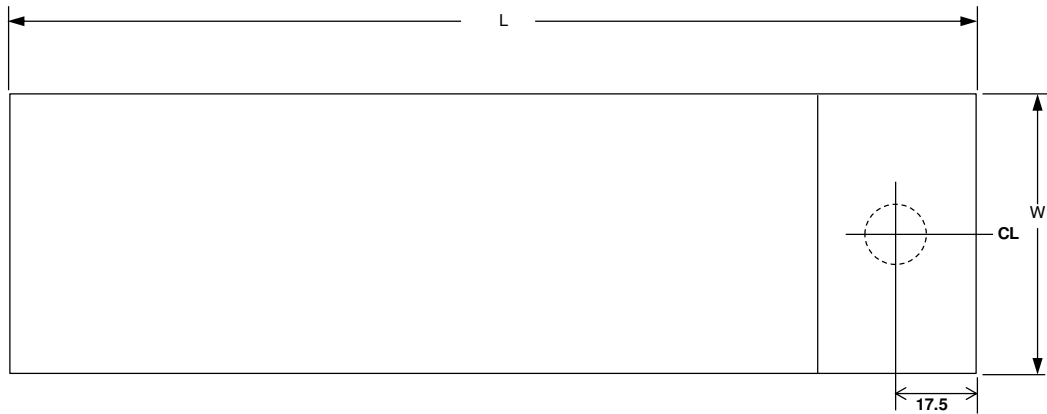


F2780Y Series



4. Mechanical Dimensions in mm, ±2mm:

ITG Part Number	L	W	H
F2780Y001L-004	200	70	50



- New York 1 914 347 2474 ● Taipei 886 2 2698 8669 ● Kaohsiung 886 7 350 2275
- Japan 81 568 85 2830 ● Shenzhen 86 755 8418 6263 ● Shanghai 86 21 5424 5141 ● Hong Kong 852 9688 9767
- sales@ITG-Electronics.com ● www.ITG-Electronics.com Revision A.0: Jun. 20, 2017

**Due to continuous product improvement, all specifications are subject to change without prior notice. Kindly contact an ITG field application engineer or a sales representative prior to purchase.*