

TPS54362EVM

Contents

1	Introduction	2
2	Setup	2
	2.1 Input/Output Connector Description	2
	2.2 Setup	3
	2.3 Operation	3
3	Board Layout	4
4	Schematic and Bill of Materials	6
	4.1 Schematic.....	6
	4.2 Bill of Materials	7

List of Figures

1	LPM Jumper Settings	2
2	Enable Jumper Settings.....	3
3	Slew Rate Settings	3
4	Reset Delay Time Settings	3
5	Top Assembly Layer.....	4
6	Top Layer Routing	5
7	Bottom Layer Routing	5
8	TPS54362EVM Schematic	6

List of Tables

1	Device and Package Configurations	2
2	TPS54362EVM Bill of Materials for 500 kHz Configuration	7
3	TPS54362EVM Bill of Materials for 2 MHz Configuration	8

1 Introduction

The Texas Instruments TPS54362EVM evaluation module (EVM) helps designers evaluate the operation and performance of the TPS54362 Switch Mode Power Supply – Buck Regulator. The device offers configurability and can be setup to switch from 200KHz up to 2.2MHz.

The EVM contains one DC / DC converter (see [Table 1](#)).

Table 1. Device and Package Configurations

Converter	IC	Package
U1	TPS54362QPWPQ1	PWP-20

2 Setup

This section describes the jumpers and connectors on the EVM as well and how to properly connect, set up and use the TPS54362EVM.

2.1 Input/Output Connector Description

J1 – Input is the power input terminal for the converter. The terminal block provides a power (Vbat) and ground (GND) connection to allow the user to attach the EVM to a cable harness.

J2 – Output is the regulated output voltage for the converter. The terminal block provides a power (Vout) and ground (GND) connection to allow the user to attach the EVM to a cable harness.

J3 – Sync is the input terminal for an optional external input clock to the converter. The external clock can be used to synchronize the switching frequency for multiple devices. The external clock frequency must meet the $F_{sw} < F_{ext} < 2 \times F_{sw}$ guideline, if used.

JP1 – LPM is the jumper used to enable Low Power Mode. The jumper allows LPM to be enabled or disabled. The “disabled with protection diode” selection should be used if the output voltage is programmed for voltages greater than 5 V. The external zener will prevent over voltage damage to the LPM input.

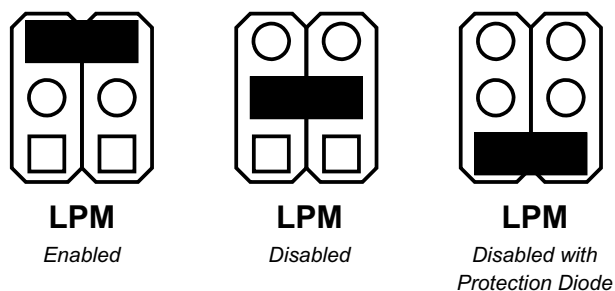


Figure 1. LPM Jumper Settings

JP2 – Enable is the jumper used to enable the converter. The converter will be enabled when the Enable is high and disabled when low. The jumper placement allows the converter to be enabled or disabled.

Under-voltage lockout can be implemented by setting the R6 and R7 resistors to transition the Enable (EN) input low as the supply voltage drops. The equation to set the values for R6 and R7 is:

$$\text{DisableVoltage} = \text{ENTHRES} \times \left(1 + \frac{R6}{R7} \right) \text{ where the ENTHRES} \sim 1V. \quad (1)$$

Resistor R7 is not populated on this EVM to reduce the quiescent supply current if this feature is not required.

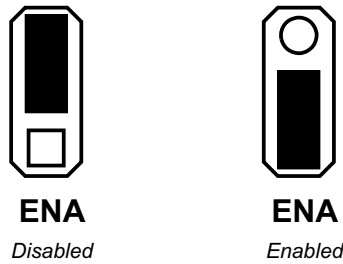


Figure 2. Enable Jumper Settings

JP3 – Slew Rate is the jumper used to set the slew rate for the switch pin. The device slew rate should be set between 15ns and 200ns. Slower slew rates can improve EMI performance, but they will increase switching losses. Jumper resistors allow the slew rate to be set to four set points. The user can set a specific slew rate by changing one of the slew rate set resistors – R8, R9 or R10. Note that the slew rate should be set to 1V/1.2ns, if the EVM is configured for a 2MHz switch in frequency.

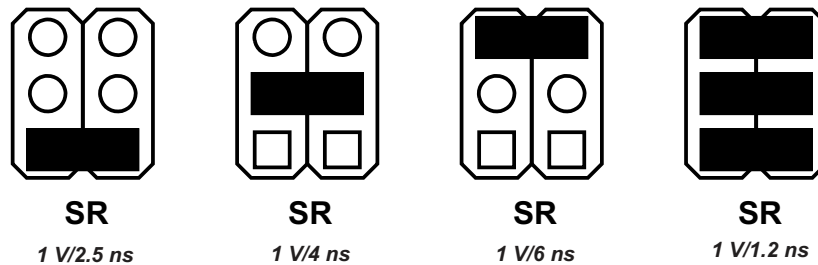


Figure 3. Slew Rate Settings

JP4 – Delay is the jumper used to set the delay time to assert the RESET pin low after the supply has exceeded the programmed Vreg_RST voltage. The delay may be programmed in the range of 2.2 ms to 200 ms. Jumper capacitors allow the reset delay to be set to four set points. The user can set a specific delay time by changing one of the delay capacitors – C13, C14 or C15.

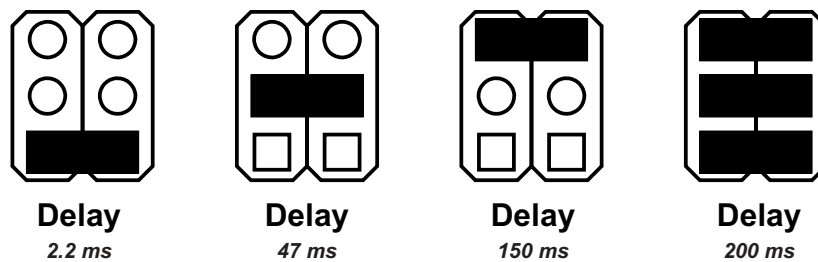


Figure 4. Reset Delay Time Settings

2.2 Setup

The input voltage range for the converter is 3.6 volts to 48 volts. A load should be applied to the Output terminal for proper operation.

2.3 Operation

For proper operation of the TPS54362, JP1, JP2, JP3 and JP4 should be properly configured. The recommended setting, using shorting blocks.

JP1 to Enabled
JP2 to Enabled
JP3 to 1V/2.5ns

JP4 to 200ms

In this configuration, the device will power up when power is applied.

JP1 LPM selects how Low Power Mode is set, Enabled or Disabled. JP2 ENA turns the device on or off. JP3 SR selects the Slew Rate for the switch pin, 1V/2.5ns, 1V/4ns, 1V/6ns or 1V/1.2ns. JP4 Delay selects the reset delay time for the device, 2.2ms, 47ms, 150ms or 200ms.

3 Board Layout

Figure 5, Figure 6 and Figure 7 show the board layout for the TPS54362EVM PWB. The EVM offers resistors, capacitors and jumpers to program the switch pin Slew Rate and regulator turn on Delay. Jumpers are also provided to Enable the device and to enable the Low Power Mode option.

The TPS54362 converter offers high efficiency, but does dissipate power. The PowerPAD™ package offers an exposed thermal pad to enhance thermal performance. This must be soldered to the copper landing on the PCB for optimal performance. The PCB provides 1 oz copper planes on the top and bottom to dissipate heat.

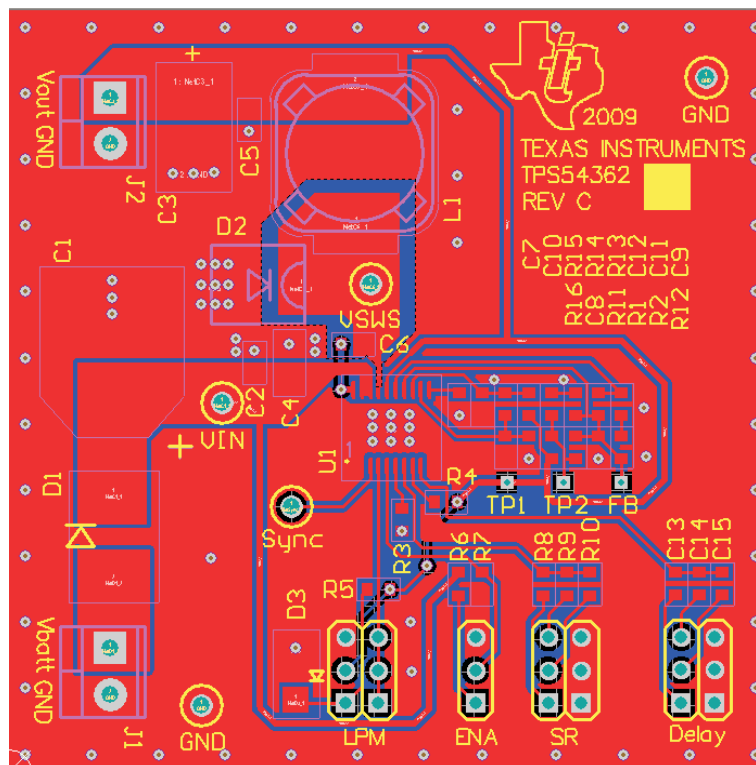


Figure 5. Top Assembly Layer

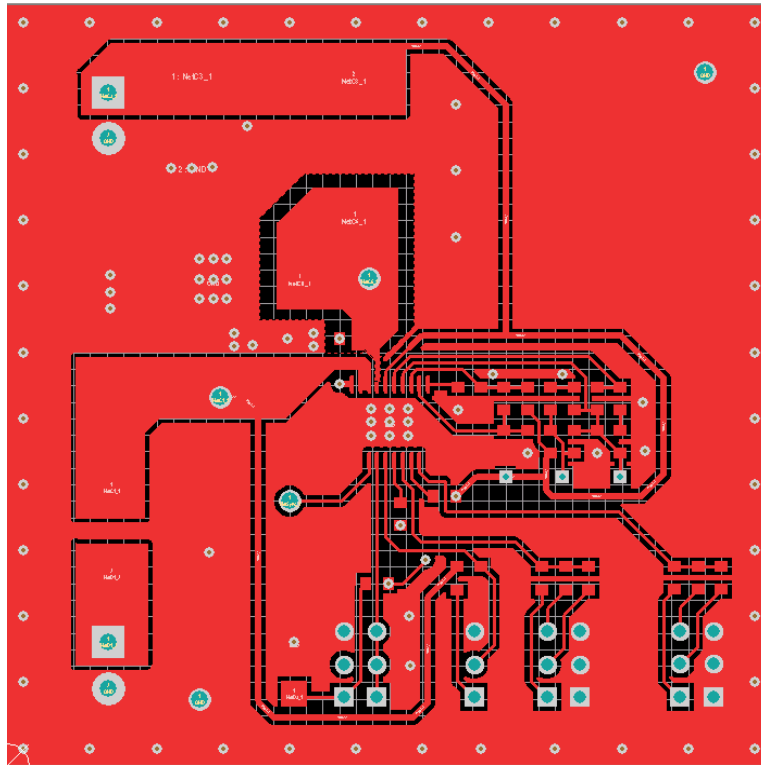


Figure 6. Top Layer Routing

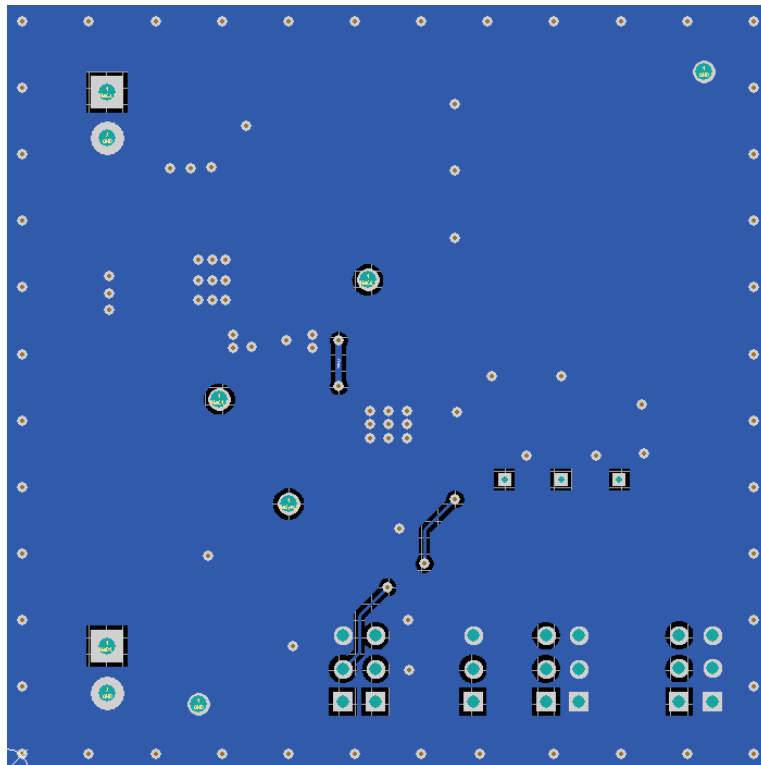


Figure 7. Bottom Layer Routing

4 Schematic and Bill of Materials

4.1 Schematic

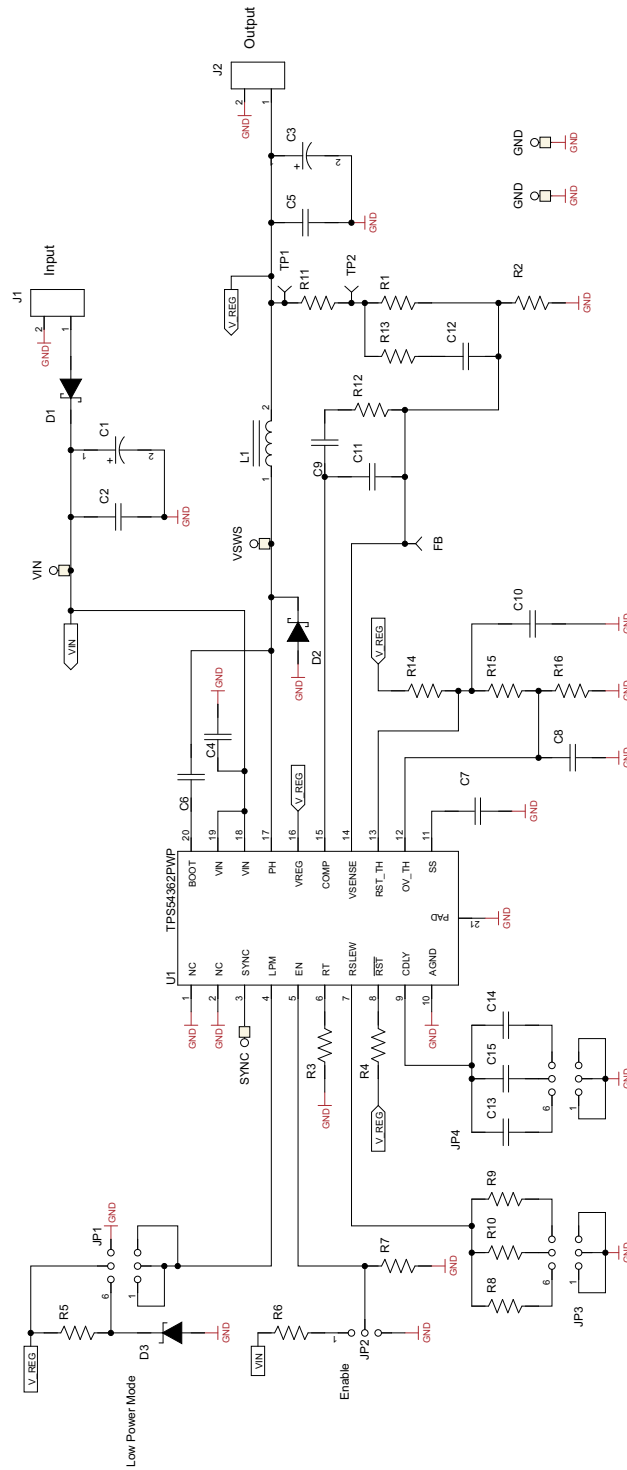


Figure 8. TPS54362EVM Schematic

4.2 Bill of Materials

Table 2. TPS54362EVM Bill of Materials for 500 kHz Configuration

Count	Ref Des	Description	Size	MFR	Part Number
1	C1	Capacitor, electrolytic, 220uF, 50V	10.3mm x 10.3mm	Panasonic	EEVFK1H221P
3	C2, C5, C6	Capacitor, ceramic, 0.1uF, 50V, 10%	0603	muRata	GCM188R71H104KA57B
1	C3	Capacitor, tantalum, 100uF, 16V, 10%	7343-31	AVX	TPSD107M016R0060
1	C4	Capacitor, ceramic, 1uF, 50V, 10%	1206	muRata	GCM31MR71H105KA55
1	C7	Capacitor, ceramic, 4.7nF, 50V, 10%	0603	muRata	GCM188R71H472KA37B
1	C8	Capacitor, ceramic, 56pF, 50V, 10%	0603	muRata	GCM188R71H563KA57B
1	C9	Capacitor, ceramic, 330pF, 50V, 10%	0603	muRata	GCM1885C1H331JA16B
2	C10, C11	Capacitor, ceramic, 22pF, 50V, 10%	0603	muRata	GCM1885C1H220JA16B
1	C12	Capacitor, ceramic, 220pF, 50V, 10%	0603	muRata	GCM1885C1H221JA16B
1	C13	Capacitor, ceramic, 2.2nF, 50V, 10%	0603	muRata	GCM1885C1H222JA16B
1	C14	Capacitor, ceramic, 150nF, 50V, 10%	0603	muRata	GCM188R71E154KA37B
1	C15	Capacitor, ceramic, 47nF, 50V, 10%	0603	muRata	GCM188R71H473KA57B
2	D1, D2	Diode, Schottky, 3A, 100V	SMC	IR	30BQ100
1	D3	Diode, Zener, 1A, 5V	SMA	Diodes	SMAZ5V1-13
2	J1, J2	Terminal block, 2-pin, 6A, 3.5mm	0.25 x 0.27	OST	ED1514
5	Sync, GND, GND, VIN, VSW	Test point, 52-mil	0.052	Std	Std
3	Delay, LPM, SR	Header, 6-pin, 100-mil spacing, (36-pin strip)	0.100 x 3	Sullins	PEC06DAAN
1	ENA	Header, 3-pin, 100-mil spacing, (36-pin strip)	0.100 x 3	Sullins	PEC03SAAN
6	DELAY(x3), ENA, LPM, SR	Connector jumper, shorting, 100-mil spacing	0.100	Sullins	SPC02SYAN
1	L1	Inductor, SMT, 22-uH	12.3mm x 12.3mm	Coilcraft	MSS1278T-223
1	R1	Resistor, chip, 187-k Ω , 1/16W, 1%	0603	Std	Std
1	R2	Resistor, chip, 35.7-k Ω , 1/16W, 1%	0603	Std	Std
1	R3	Resistor, chip, 221-k Ω , 1/16W, 1%	0603	Std	Std
2	R4	Resistor, chip, 2-k Ω , 1/16W, 1%	0603	Std	Std
3	R5, R6, R8	Resistor, chip, 30.1-k Ω , 1/16W, 1%	0603	Std	Std
1	R7	Do not populate			
1	R9	Resistor, chip, 68.1-k Ω , 1/16W, 1%	0603	Std	Std
1	R10	Resistor, chip, 47.5-k Ω , 1/16W, 1%	0603	Std	Std
1	R11	Resistor, chip, 49.9- Ω , 1/16W, 1%	0603	Std	Std
1	R12	Resistor, chip, 274-k Ω , 1/16W, 1%	0603	Std	Std
1	R13	Resistor, chip, 2.55-k Ω , 1/16W, 1%	0603	Std	Std
1	R14	Resistor, chip, 82.5-k Ω , 1/16W, 1%	0603	Std	Std
1	R15	Resistor, chip, 2.32-k Ω , 1/16W, 1%	0603	Std	Std
1	R16	Resistor, chip, 15-k Ω , 1/16W, 1%	0603	Std	STD
1	U1	IC, TPS54362QPWPQ1		TI	TPS54362QPWPQ1
	-	PCB, 2.3-inch x 2.3-inch x 0.062		Any	TPS54362, REV C

Table 3. TPS54362EVM Bill of Materials for 2 MHz Configuration

Count	Ref Des	Description	Size	MFR	Part Number
1	C1	Capacitor, electrolytic, 220uF, 50V	10.3mm x 10.3mm	Panasonic	EEVFK1H221P
3	C2, C5, C6	Capacitor, ceramic, 0.1uF, 50V, 10%	0603	muRata	GCM188R71H104KA57B
1	C3	Capacitor, tantalum, 100uF, 16V, 10%	7343-31	AVX	TPSD107M016R0060
1	C4	Capacitor, ceramic, 1uF, 50V, 10%	1206	muRata	GCM31MR71H105KA55
1	C8	Capacitor, ceramic, 56pF, 50V, 10%	0603	muRata	GCM188R71H563KA57B
1	C7	Capacitor, ceramic, 4.7nF, 50V, 10%	0603	muRata	GCM188R71H472KA37B
1	C9	Capacitor, ceramic, 82pF, 50V, 10%	0603	muRata	GCM1885C1H820JA16B
2	C10, C11	Capacitor, ceramic, 12pF, 50V, 10%	0603	muRata	GCM1885C1H120JA16B
1	C12	Capacitor, ceramic, 120pF, 50V, 10%	0603	muRata	GCM1885C1H121JA16B
1	C13	Capacitor, ceramic, 2.2nF, 50V, 10%	0603	muRata	GCM1885C1H222JA16B
1	C14	Capacitor, ceramic, 150nF, 50V, 10%	0603	muRata	GCM188R71E154KA37B
1	C15	Capacitor, ceramic, 47nF, 50V, 10%	0603	muRata	GCM188R71H473KA57B
2	D1, D2	Diode, Schottky, 3A, 100V	SMC	IR	30BQ100
1	D3	Diode, Zener, 1A, 5V	SMA	Diodes	SMAZ5V1-13
2	J1, J2	Terminal block, 2-pin, 6A, 3.5mm	0.25 x 0.27	OST	ED1514
5	Sync, GND, GND, VIN, VSW	Test point, 52-mil	0.052	Std	Std
3	Delay, LPM, SR	Header, 6-pin, 100-mil spacing, (36-pin strip)	0.100 x 3	Sullins	PTC36CAAN
1	ENA	Header, 3-pin, 100-mil spacing, (36-pin strip)	0.100 x 3	Sullins	PTC36CAAN
6	DELAY (x3), ENA, LPM, SR	Connector jumper, shorting, 100-mil spacing	0.100	Sullins	SPC02SYAN
1	L1	Inductor, SMT, 4.7-uH	12.3mm x 12.3mm	Coilcraft	MSS1278T-4R7
1	R1	Resistor, chip, 187-k Ω , 1/16W, 1%	0603	Std	Std
1	R2	Resistor, chip, 35.7-k Ω , 1/16W, 1%	0603	Std	Std
1	R3	Resistor, chip, 50-k Ω , 1/16W, 1%	0603	Std	Std
1	R4	Resistor, chip, 2-k Ω , 1/16W, 1%	0603	Std	Std
2	R5, R6	Resistor, chip, 30.1-k Ω , 1/16W, 1%	0603	Std	Std
1	R7	Do not populate			
1	R8	Resistor, chip, 14.7-k Ω , 1/16W, 1%	0603	Std	Std
1	R9	Resistor, chip, 68.1-k Ω , 1/16W, 1%	0603	Std	Std
1	R10	Resistor, chip, 47.5-k Ω , 1/16W, 1%	0603	Std	Std
1	R11	Resistor, chip, 49.9- Ω , 1/16W, 1%	0603	Std	Std
1	R12	Resistor, chip, 511-k Ω , 1/16W, 1%	0603	Std	Std
1	R13	Resistor, chip, 1.37-k Ω , 1/16W, 1%	0603	Std	Std
1	R14	Resistor, chip, 82.5-k Ω , 1/16W, 1%	0603	Std	Std
1	R15	Resistor, chip, 2.32-k Ω , 1/16W, 1%	0603	Std	Std
1	R16	Resistor, chip, 15-k Ω , 1/16W, 1% IC,	0603	Std	Std
1	U1	TPS54362QPWPQ1		TI	TPS54362QPWPQ1
-	-	PCB, 2.3-inch x 2.3-inch x 0.062		Any	TPS54362, REV C

IMPORTANT NOTICE

Texas Instruments Incorporated and its subsidiaries (TI) reserve the right to make corrections, modifications, enhancements, improvements, and other changes to its products and services at any time and to discontinue any product or service without notice. Customers should obtain the latest relevant information before placing orders and should verify that such information is current and complete. All products are sold subject to TI's terms and conditions of sale supplied at the time of order acknowledgment.

TI warrants performance of its hardware products to the specifications applicable at the time of sale in accordance with TI's standard warranty. Testing and other quality control techniques are used to the extent TI deems necessary to support this warranty. Except where mandated by government requirements, testing of all parameters of each product is not necessarily performed.

TI assumes no liability for applications assistance or customer product design. Customers are responsible for their products and applications using TI components. To minimize the risks associated with customer products and applications, customers should provide adequate design and operating safeguards.

TI does not warrant or represent that any license, either express or implied, is granted under any TI patent right, copyright, mask work right, or other TI intellectual property right relating to any combination, machine, or process in which TI products or services are used. Information published by TI regarding third-party products or services does not constitute a license from TI to use such products or services or a warranty or endorsement thereof. Use of such information may require a license from a third party under the patents or other intellectual property of the third party, or a license from TI under the patents or other intellectual property of TI.

Reproduction of TI information in TI data books or data sheets is permissible only if reproduction is without alteration and is accompanied by all associated warranties, conditions, limitations, and notices. Reproduction of this information with alteration is an unfair and deceptive business practice. TI is not responsible or liable for such altered documentation. Information of third parties may be subject to additional restrictions.

Resale of TI products or services with statements different from or beyond the parameters stated by TI for that product or service voids all express and any implied warranties for the associated TI product or service and is an unfair and deceptive business practice. TI is not responsible or liable for any such statements.

TI products are not authorized for use in safety-critical applications (such as life support) where a failure of the TI product would reasonably be expected to cause severe personal injury or death, unless officers of the parties have executed an agreement specifically governing such use. Buyers represent that they have all necessary expertise in the safety and regulatory ramifications of their applications, and acknowledge and agree that they are solely responsible for all legal, regulatory and safety-related requirements concerning their products and any use of TI products in such safety-critical applications, notwithstanding any applications-related information or support that may be provided by TI. Further, Buyers must fully indemnify TI and its representatives against any damages arising out of the use of TI products in such safety-critical applications.

TI products are neither designed nor intended for use in military/aerospace applications or environments unless the TI products are specifically designated by TI as military-grade or "enhanced plastic." Only products designated by TI as military-grade meet military specifications. Buyers acknowledge and agree that any such use of TI products which TI has not designated as military-grade is solely at the Buyer's risk, and that they are solely responsible for compliance with all legal and regulatory requirements in connection with such use.

TI products are neither designed nor intended for use in automotive applications or environments unless the specific TI products are designated by TI as compliant with ISO/TS 16949 requirements. Buyers acknowledge and agree that, if they use any non-designated products in automotive applications, TI will not be responsible for any failure to meet such requirements.

Following are URLs where you can obtain information on other Texas Instruments products and application solutions:

Products

Amplifiers	amplifier.ti.com
Data Converters	dataconverter.ti.com
DLP® Products	www.dlp.com
DSP	dsp.ti.com
Clocks and Timers	www.ti.com/clocks
Interface	interface.ti.com
Logic	logic.ti.com
Power Mgmt	power.ti.com
Microcontrollers	microcontroller.ti.com
RFID	www.ti-rfid.com
RF/IF and ZigBee® Solutions	www.ti.com/lprf

Applications

Audio	www.ti.com/audio
Automotive	www.ti.com/automotive
Broadband	www.ti.com/broadband
Digital Control	www.ti.com/digitalcontrol
Medical	www.ti.com/medical
Military	www.ti.com/military
Optical Networking	www.ti.com/opticalnetwork
Security	www.ti.com/security
Telephony	www.ti.com/telephony
Video & Imaging	www.ti.com/video
Wireless	www.ti.com/wireless

Mailing Address: Texas Instruments, Post Office Box 655303, Dallas, Texas 75265
Copyright © 2009, Texas Instruments Incorporated