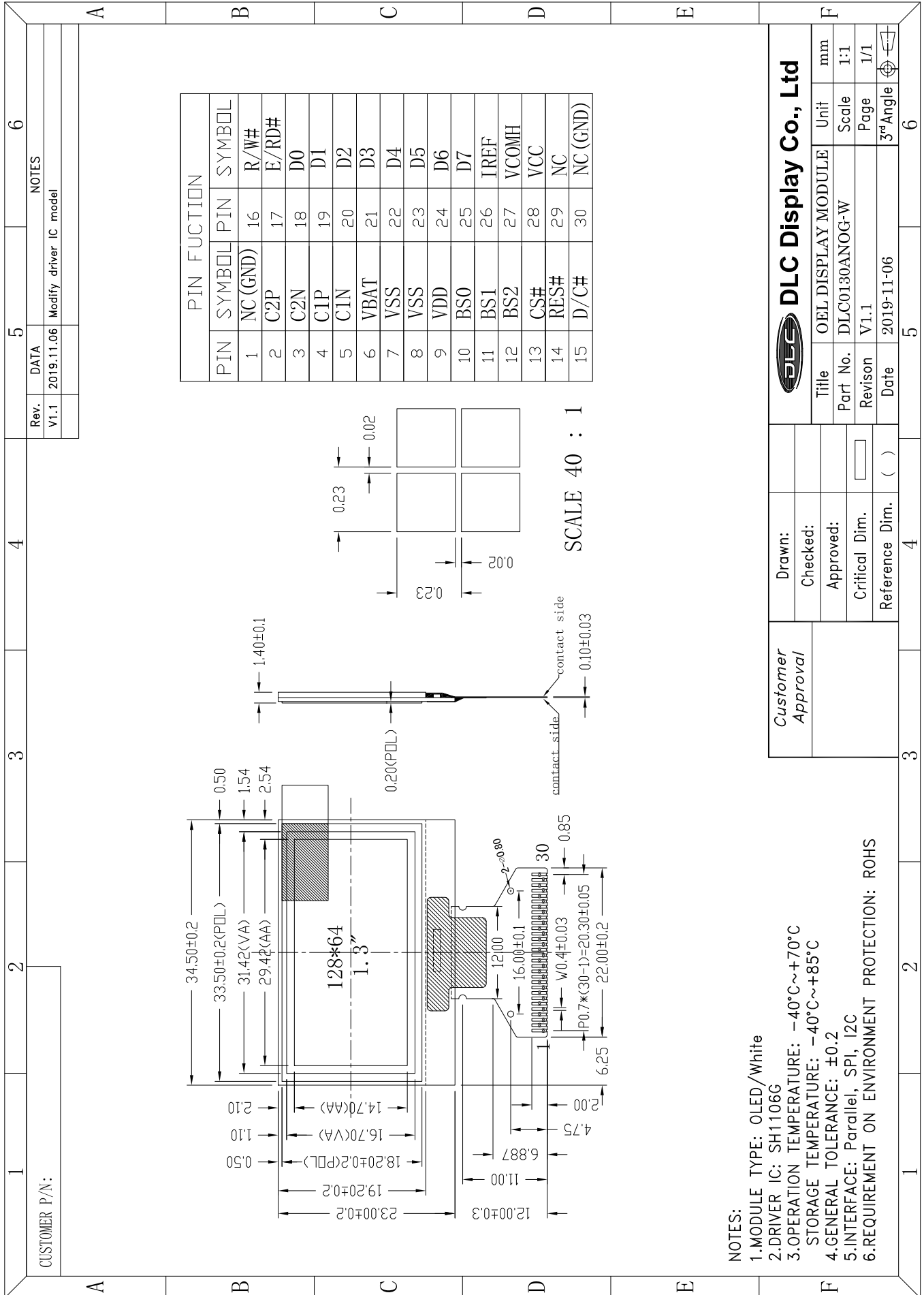


Outline Drawing



- NOTES:
1. MODULE TYPE: OLED/White
 2. DRIVER IC: SH1106G
 3. OPERATION TEMPERATURE: -40°C~+70°C
 4. STORAGE TEMPERATURE: -40°C~+85°C
 5. GENERAL TOLERANCE: ±0.2
 6. INTERFACE: Parallel, SPI, I2C
 7. REQUIREMENT ON ENVIRONMENT PROTECTION: ROHS

Customer Approval	Drawn:		
	Checked:		
	Approved:		
	Critical Dim.		
	Reference Dim.	()	
DLC Display Co., Ltd		Title	OEL DISPLAY MODULE
		Part No.	DLC0130ANOG-W
		Revision	V1.1
		Date	2019-11-06
		Unit	mm
		Scale	1:1
		Page	1/1
		3 rd Angle	