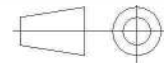
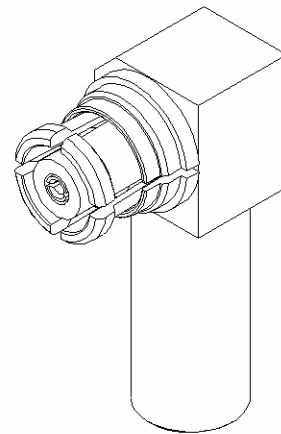
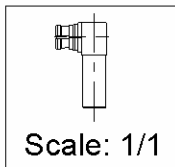
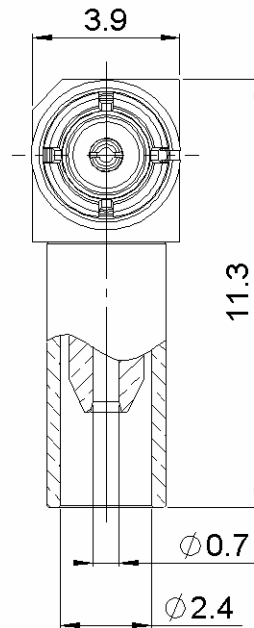
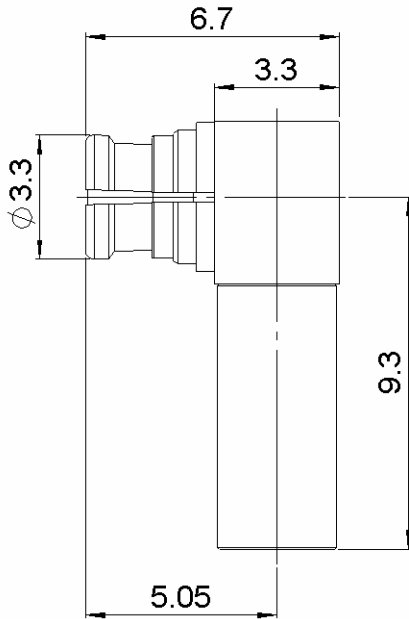


**RIGHT ANGLE PLUG CRIMP TYPE**

**NON MAGNETIC CABLE 1/50 S**

**R222.900.437**

Series : SMP-COM



All dimensions are in mm.

| COMPONENTS     | MATERIALS           | PLATING (µm)     |
|----------------|---------------------|------------------|
| BODY           | NON MAGNETIC BRONZE | BBR              |
| CENTER CONTACT | BERYLLIUM COPPER    | GOLD OVER COPPER |
| OUTER CONTACT  | BERYLLIUM COPPER    | BBR              |
| INSULATOR      | PTFE                |                  |
| GASKET         |                     |                  |
| OTHERS PARTS   | NON MAGNETIC BRONZE | BBR              |
| .              | .                   | .                |
| .              | .                   | .                |

Issue : 1205 B

In the effort to improve our products, we reserve the right to make changes judged to be necessary.



**RIGHT ANGLE PLUG CRIMP TYPE**

**R222.900.437**

**NON MAGNETIC CABLE 1/50 S**

Series : **SMP-COM**

**PACKAGING**

| Standard   | Unit | Other             |
|------------|------|-------------------|
| <b>100</b> | -    | <b>Contact us</b> |

**SPECIFICATION**

**ELECTRICAL CHARACTERISTICS**

|                                 |                |                               |
|---------------------------------|----------------|-------------------------------|
| Impedance                       |                | <b>50</b> Ω                   |
| Frequency                       |                | <b>0-12.4</b> GHz             |
| VSWR                            | <b>1.25*</b> + | <b>0,0000</b> x F(GHz) Maxi   |
| Insertion loss                  |                | <b>0.12</b> √F(GHz) dB Maxi   |
| RF leakage                      | - (            | <b>55**</b> - F(GHz)) dB Maxi |
| Voltage rating                  |                | <b>250</b> Veff Maxi          |
| Dielectric withstanding voltage |                | <b>500</b> Veff mini          |
| Insulation resistance           |                | <b>5000</b> MΩ mini           |

**CABLE ASSEMBLY**

| Stripping | a    | b    | c    | d    | e    | f    |
|-----------|------|------|------|------|------|------|
| mm        | 1,30 | 5,00 | 7,80 | 0,00 | 6,50 | 0,00 |

Assembly instruction : **Crimp 05**

Recommended cable(s)

**MECHANICAL CHARACTERISTICS**

|                            |            |           |
|----------------------------|------------|-----------|
| Center contact retention   |            |           |
| Axial force – Mating end   | <b>6.8</b> | N mini    |
| Axial force – Opposite end | <b>6.8</b> | N mini    |
| Torque                     | <b>NA</b>  | N.cm mini |

Characteristics indicated on this data sheet are those that can be achieved with the highest performance cable. Intrinsic limitations of the cable may diminish the performance of the assembly

Cable retention

|            |           |        |
|------------|-----------|--------|
| - pull off | <b>15</b> | N mini |
| - torque   | <b>NA</b> | N.cm   |

**TOOLING**

|                    |               |             |
|--------------------|---------------|-------------|
| Recommended torque |               |             |
| Mating             | <b>NA</b>     | N.cm        |
| Panel nut          | <b>NA</b>     | N.cm        |
| Clamp nut          | <b>NA</b>     | N.cm        |
| A/F clamp nut      | <b>0,0000</b> | mm          |
| Mating life        | <b>100</b>    | Cycles mini |
| Weight             | <b>0,7800</b> | g           |

| Part Number  | Description                  | Hexagon |
|--------------|------------------------------|---------|
| R282.293.000 | CRIMPING TOOL<br>M22520/5-01 |         |
| R282.235.003 | CRIMPING DIES<br>M22520/5-03 | 2.67    |
| R282.211.000 | CRIMPING TOOL                | 2.67    |

**ENVIRONMENTAL**

|                       |                 |           |
|-----------------------|-----------------|-----------|
| Operating temperature | <b>-55/+125</b> | ° C       |
| Hermetic seal         | <b>NA</b>       | Atm.cm3/s |
| Panel leakage         | <b>NA</b>       |           |

**OTHER CHARACTERISTICS**

\*VSWR at 2GHz  
 \*\* RF Leakage: -40dB min 3<F<6GHz  
 Distortion of the magnetic field  
 < 0.5 ppm at 10 mm at Bo = 1.5 Tesla

Issue : **1205 B**

In the effort to improve our products, we reserve the right to make changes judged to be necessary.



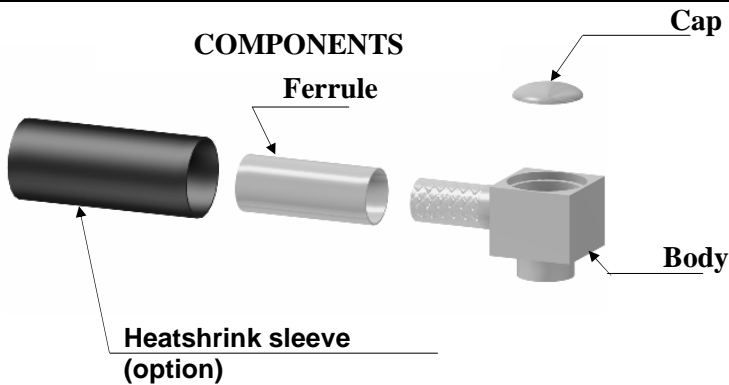
**RIGHT ANGLE PLUG CRIMP TYPE**

**NON MAGNETIC CABLE 1/50 S**

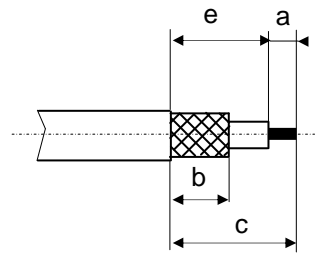
**R222.900.437**

Series : SMP-COM

**COMPONENTS**

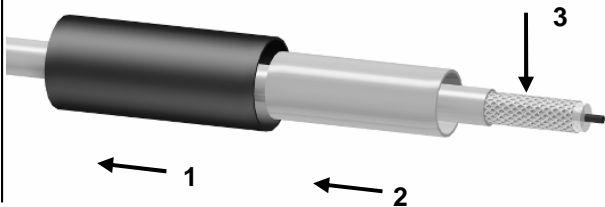


**STRIPPING DIMENSIONS**



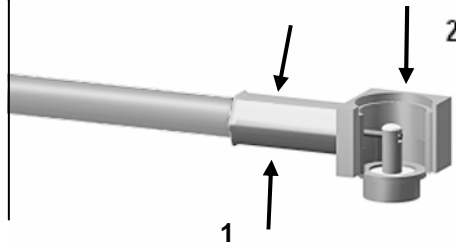
**1**

Slide the heatshrink sleeve onto the cable (Option).  
Slide the ferrule onto the cable.  
Strip the cable.



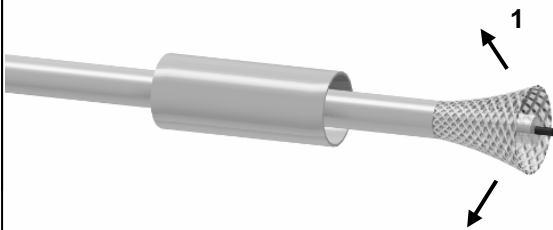
**4**

Crimp the ferrule with crimping tool or ( see connector TDS ).  
Solder the inner conductor.



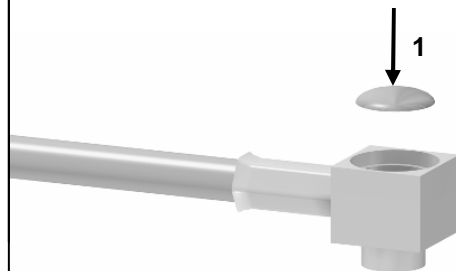
**2**

Fan the braid.



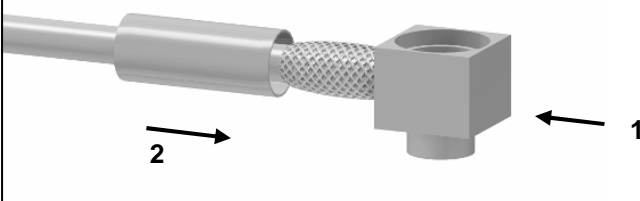
**5**

Place the cap into the body.



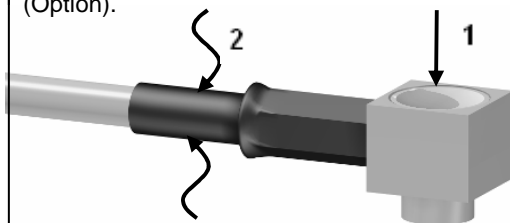
**3**

Push the connector body under the braid.  
Slide the ferrule over the braid.



**6**

Press on the cap flush or slightly below the surface of the body assembly.  
Slide the sleeve over the ferrule and heatshrink it in place (Option).



**Issue : 1205 B**

In the effort to improve our products, we reserve the right to make changes judged to be necessary.

