

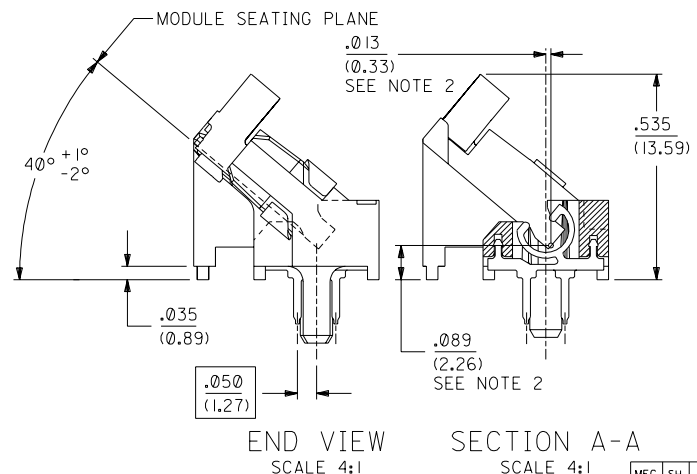
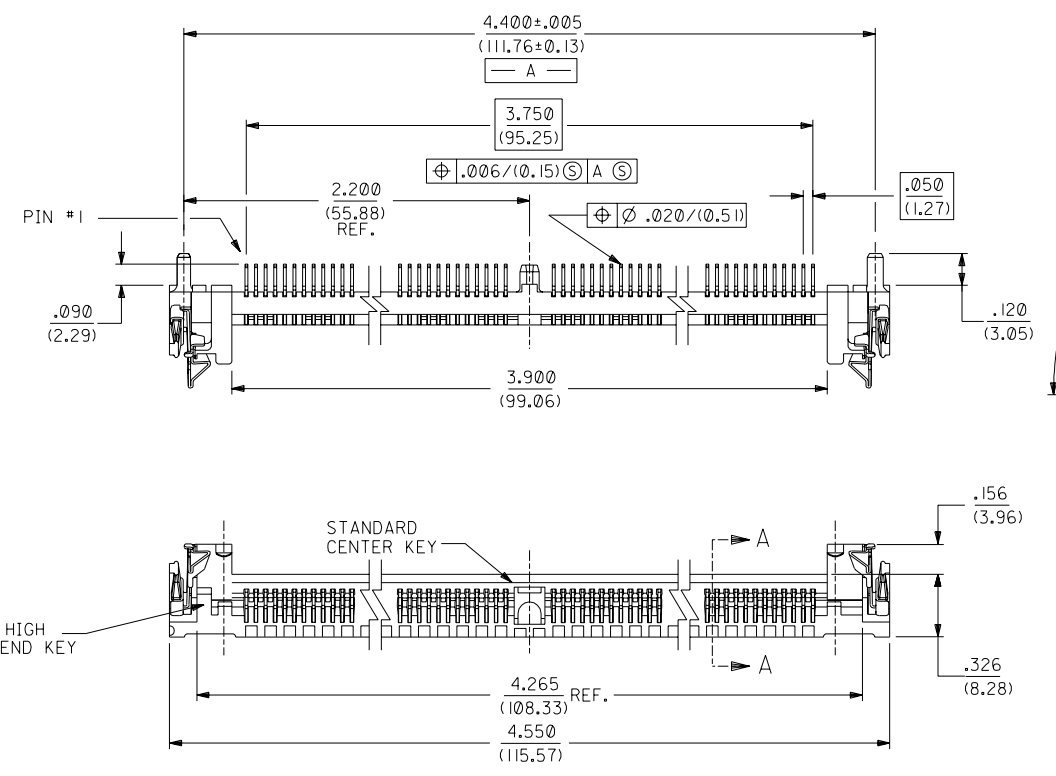
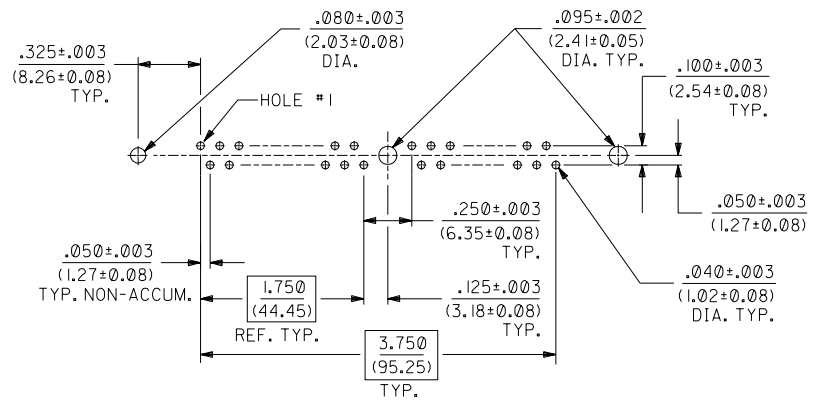
**NOTES:**

- CARD SLOT ACCEPTS P.C. BOARDS  $.050 +.004 / -.003$  THICK, MEASURED OVER CONTACT PADS. (1.27 + 0.10 / - 0.08)
- LOCATION OF LOWER CORNER OF MODULE BOARD.
- PRODUCT SPEC PS-78954 APPLIES.
- CENTER PEG IS AN INTERFERENCE FIT TO RECOMMENDED P.C. BOARD HOLE.

**MATERIALS:**

- HOUSING: LCP, GLASS FILLED, 94V-0. COLOR: BLACK.
- LATCH: STAINLESS STEEL.
- TERMINAL: PHOSPHOR BRONZE, POST PLATED
- 200  $\mu\text{in.}$  / (5.08  $\mu\text{m}$ ) MINIMUM TIN IN CONTACT AREA AND 150  $\mu\text{in.}$  / (3.81  $\mu\text{m}$ ) MINIMUM TIN IN TAIL AREA OVER 50  $\mu\text{in.}$  / (1.27  $\mu\text{m}$ ) MINIMUM NICKEL OVERALL.

THE PRIMARY SHIPPING CARTON WILL BE LABELED "COMPLIANT TO RoHS DIRECTIVE 2002/95/EC AND ELV ANNEX II OF DIRECTIVE 2000/53/EC". CARTONS WITHOUT THIS LABEL MAY CONTAIN PRODUCT WITH LEAD.



DIMENSIONS SHOWN (METRIC) INCH UNLESS OTHERWISE SPECIFIED TOLERANCES: ANGULAR ± 1/2°		▽ = 0 ▲ = 0 REVISE ONLY ON CAD SYSTEM	
3 PLACE ± .010	---	TITLE SALES ASSY. 72 CIRCUIT 40° METAL LATCH HIGH KEY SINGLE ROW SIMM SOCKET	
2 PLACE ± .014	± 0.25	MOLEX INCORPORATED SHEET NO. DATE 1 OF 1 02/23/95	
1 PLACE ---	± 0.36	PART NO. 15-82-0649 DRWG. NO. SDA-78976-7246	
DRAFT WHERE APPLICABLE MUST REMAIN WITHIN DIMENSIONS		MFG. SH. REV. LTR. REVISIONS	
DRWG. BY DKS	CHK'D. BY	FILE NAME	DIV. SIZE
APP'D. BY	SCALE 2:1	ST0976-46	DA C
THIS DRAWING CONTAINS INFORMATION THAT IS PROPRIETARY TO MOLEX INC. AND SHOULD NOT BE USED WITHOUT WRITTEN PERMISSION.			