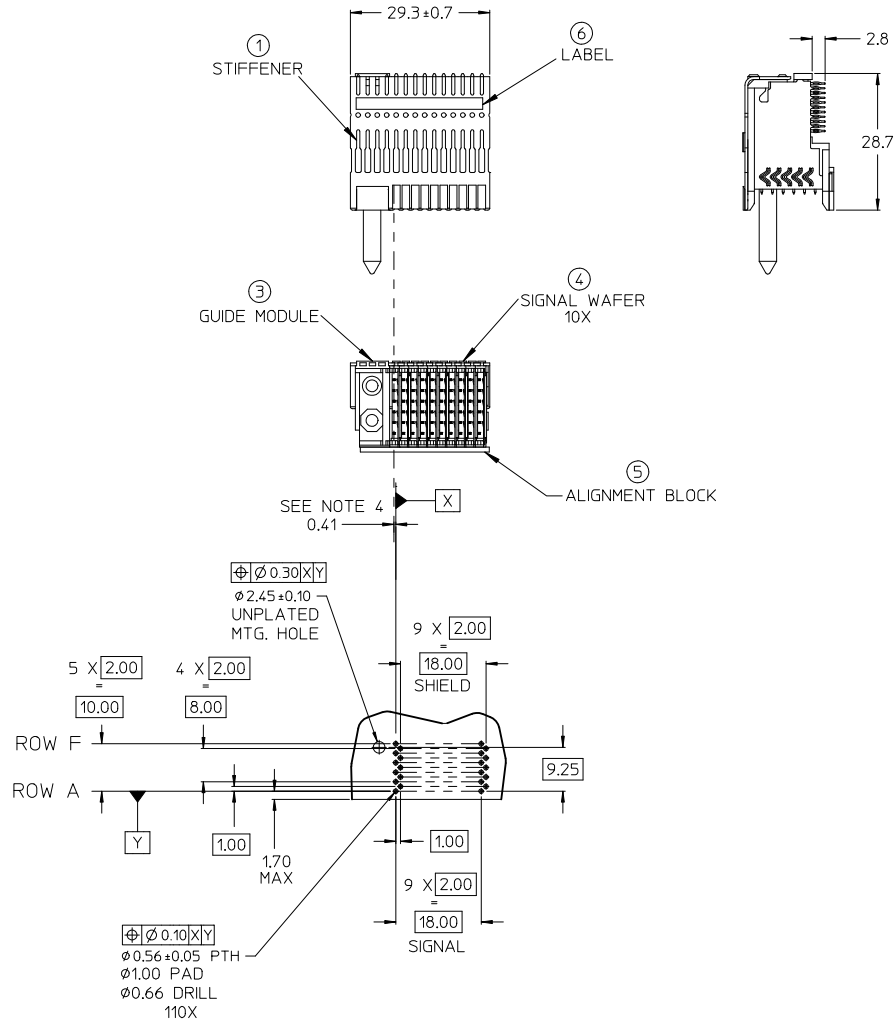


CUSTOMER: EGENERA



DAUGHTER CARD HOLE PATTERN
(CONNECTOR SIDE)

NOTES:

1. MATERIALS: HOUSING: LIQUID CRYSTAL POLYMER (LCP), GLASS-FILLED, UL94V-0, BLACK.
TERMINALS: COPPER ALLOY
STIFFENER: STAINLESS STEEL
2. FINISH: SELECTIVE GOLD (Au) IN CONTACT AREA,
0.76 micrometers MINIMUM THICKNESS,
SELECTIVE MATTE TIN (Sn) IN TAIL AREA,
NICKEL (Ni) UNDERPLATE OVERALL.
3. THIS PART CONFORMS TO MOLEX PRODUCT SPECIFICATION PS-74031-999.
4. DISTANCE FROM CENTER OF CONTACT TO CENTER OF PLATED THROUGH HOLE.
5. PARTS PACKED PER PK-70873-0892.
SCREWS PACKED IN BAGS INSIDE OF TUBES.
6. LABEL MARKED WITH MOLEX PART NUMBER AND DATE CODE. LABEL CAN BE REPLACED WITH A LASER MARK ON THE STIFFENER.
7. THIS PART CONFORMS TO MOLEX COSMETIC SPECIFICATION PS-45499-002 CLASS B.

LEAD-FREE
PLATING

| ITEM | QTY | PART NUMBER | DESCRIPTION |
|------|-----|-------------|---------------------------|
| 1 | 1 | 74601-0029 | STIFFENER |
| 2 | 1 | 73726-0000 | MOUNTING SCREW |
| 3 | 1 | 74603-8000 | GUIDE MODULE, UNPOLARIZED |
| 4 | 10 | 74602-2030 | 6.25mm SIGNAL WAFER, LF |
| 5 | 1 | 74719-0014 | 14 POS. ALIGNMENT BLOCK |
| 6 | 1 | 73728-0000 | CUSTOM LABEL |

| | | | | | | |
|---|--|---|-----------------|--------------|---|------------------------|
| CHG TO LEAD-FREE EC NO: UCP2012-2210 DRAWN BY: GB CHECKED BY: J.B. INGHAM APPROVED BY: SMILLER DATE: 2012/01/25 DATE: 2012/01/25 DATE: 2012/02/28 | QUALITY SYMBOLS | GENERAL TOLERANCES (UNLESS SPECIFIED) | DIMENSION STYLE | SCALE | DESIGN UNITS | THIRD ANGLE PROJECTION |
| | ▽=0 | mm INCH | MM ONLY | 2:1 | METRIC | ☉ |
| | ▽=0 | 4 PLACES ± --- ± --- | DRAWN BY DATE | DATE | TITLE | |
| | ▽=0 | 3 PLACES ± --- ± --- | GB 2012/01/25 | 2012/01/25 | VHDM 6 ROW, LF RIGHT ANGLE MALE SALES DRAWING | |
| | 2 PLACES ± 0.25 ± --- | DATE | DATE | | | |
| | 1 PLACE ± 0.38 ± --- | APPROVED BY DATE | DATE | | | |
| | ANGULAR ±1/2° | SMILLER 2012/02/28 | 2012/02/28 | | | |
| | DRAFT WHERE APPLICABLE MUST REMAIN WITHIN DIMENSIONS | MATERIAL NO. | 74600-1159 | DOCUMENT NO. | SD-74600-159 | SHEET NO. 1 OF 1 |
| | | THIS DRAWING CONTAINS INFORMATION THAT IS PROPRIETARY TO MOLEX INCORPORATED AND SHOULD NOT BE USED WITHOUT WRITTEN PERMISSION | | | | |