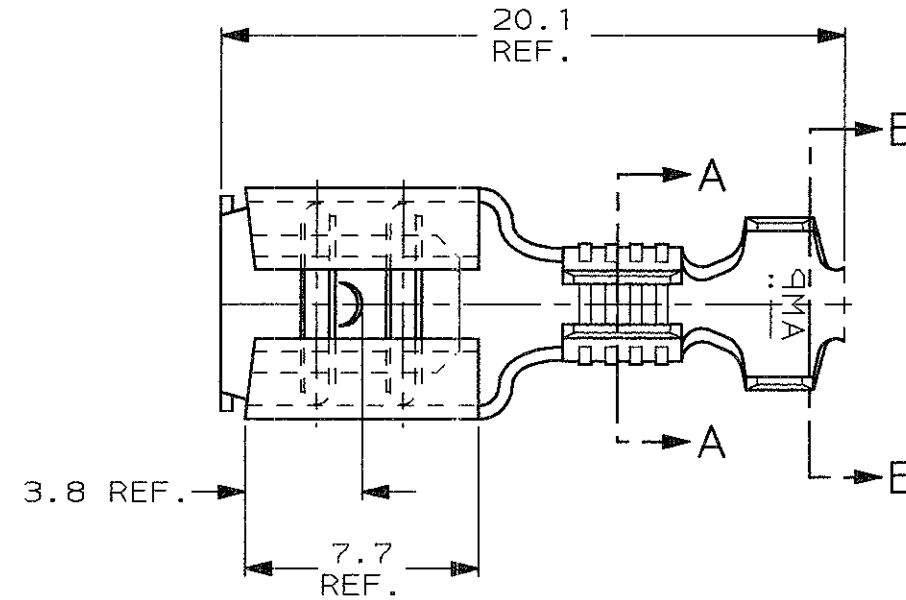


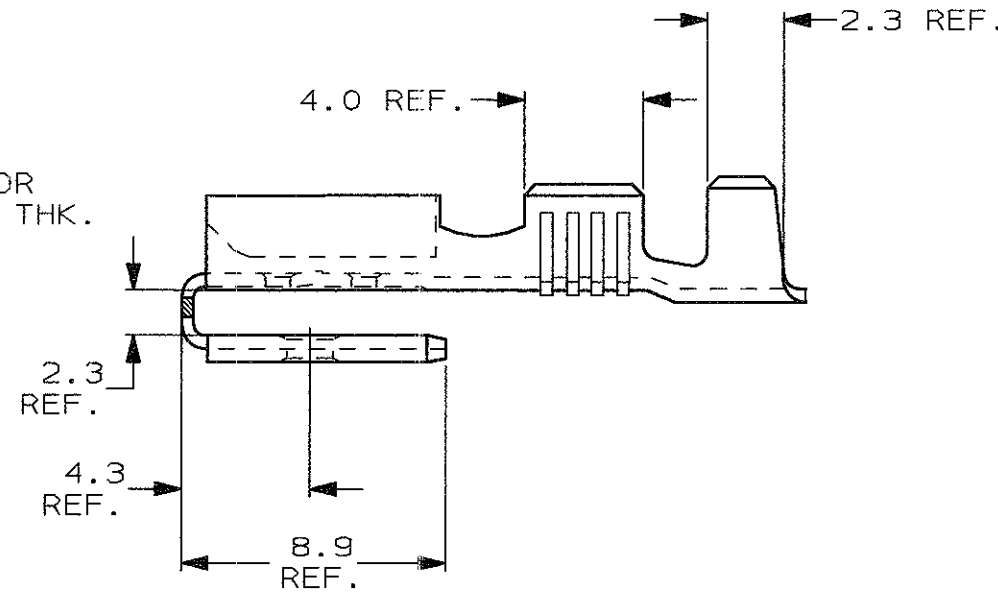
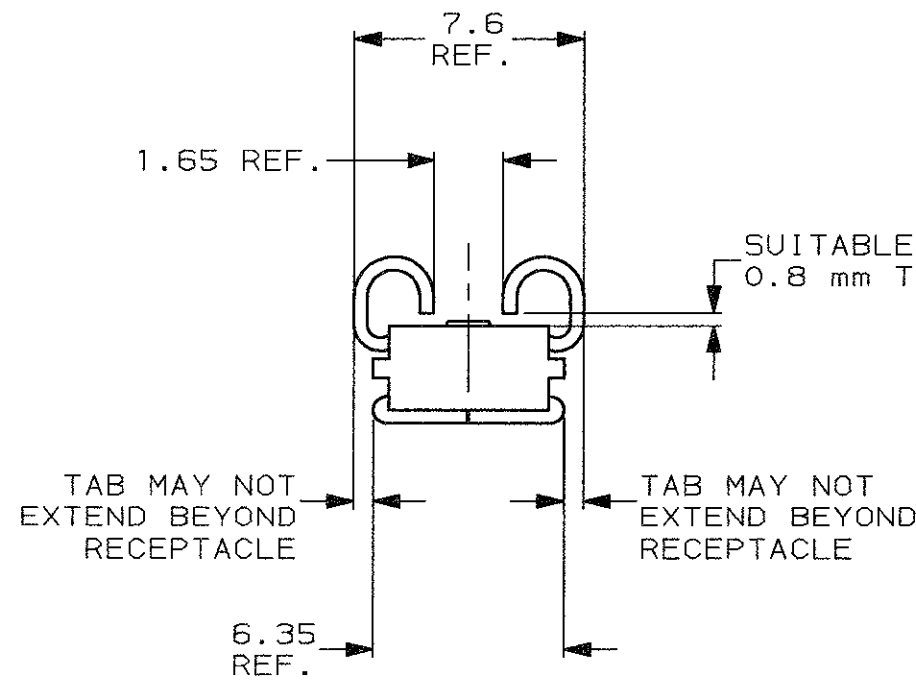
SCALA NON IMPEGNATIVA  
(DO NOT SCALE)  
DIMENSIONI IN mm  
(DIMENSIONS IN mm)

**METRIC**

THIRD ANGLE  
PROJECTION

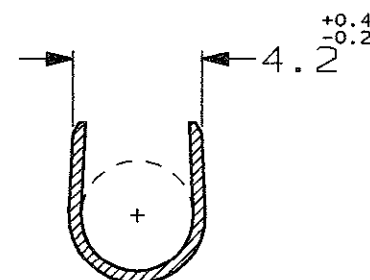
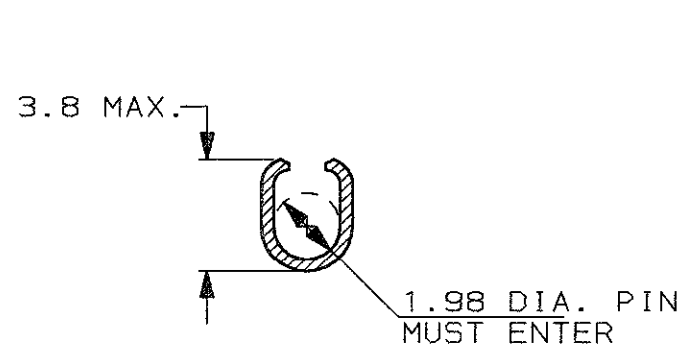


- 1) PER PEZZI IN NASTRO  
VEDERE DISEGNO 280079.  
(FOR STRIP VERSION SEE DWG. 280079).
- 2) CONFEZIONAMENTO IN ACCORDO ALLA  
SPECIFICA AMP 107-20201.  
(PACKAGE ACCORDING TO AMP SPEC. 107-20201).



SEZIONE A-A  
(SECTION A-A)

SEZIONE B-B  
(SECTION B-B)



PRE NICHELATO (PRE-NICKEL PL.)	ACCIAIO (STEEL)	0-181637-3	C
STAGNATO (TIN PLATED)	OTTONE (BRASS)	0-181637-2	C
FINITURA / COLORE (FINISH / COLOUR)	MATERIALE (MATERIAL)	NUMERO (AMP P/N)	REV

CUSTOMER DWG.  
FOR REFERENCE ONLY

DISEGNO PER CLIENTE  
SOLO PER RIFERIMENTO

THIS DRAWING IS UNPUBLISHED - RELEASE FOR PUBLICATION 19

© COPYRIGHT 19 BY AMP INCORPORATED, HARRISBURG, PA. ALL INTERNATIONAL RIGHT RESERVED. AMP PRODUCTS MAY BE COVERED BY U.S. AND FOREIGN PATENT AND/OR PATENT PENDING

TOLLERANZE: SE NON DIVERSAMENTE SPECIFICATO (TOLERANCES: UNLESS OTHERWISE SPECIFIED)	DIAM. ISOLANTE (INS. DIA. RANGE)	RANGO FILO (WIRE RANGE) mm <sup>2</sup>	SCALA (SCALE)
± 0.3	3.0-4.3	0.8-2.5	4:1

ANGOLI  
(ANGLES) ± 2°

**AMP** AMP ITALIA S.p.A.  
Corso F.lli Cervi, 15  
COLLEGNO (TORINO)

DIS. 28 JUN 2001  
(DR.) H. YAALI

DESCRIZIONE  
(DESCRIPTION) FASTON® Connector,  
.250" sr. PIGGY-BACK REC. CONTACT  
(CLOSE PIECE VERSION)

CONT. 28 JUN 2001 (CHK) C. TARTARI	LOC. SIZE NUMERO (DWG NO)	REV.	FOGLIO (SHEET)
	IA3 C-181637	C	1 DI 1

REV. (REV.)	REVISIONI (REVISION RECORD)	H. Y.	DATA (DATE)	APP. (APP.)
C	REDRAWN ET00-0174-01		2001	

DISTRIBUZIONE  
(PRINT DIST.)