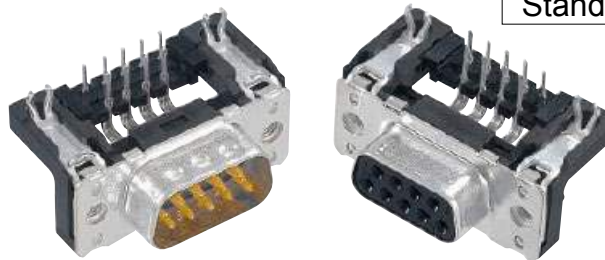
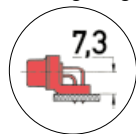


Standard Versions

Number of contacts

Mounting height

9-37



SMC stamped solder pins, angled with grounding board locks

D-Sub

| Identification   | No. of contacts                        | Part number         |                     |                    |
|--|--|---------------------|---------------------|--------------------|
| <b>Performance levels</b><br>Explanations see page 05.176<br>Other performance levels on request |  | Performance level 3 | Performance level 2 |                    |
| <b>Male connector</b><br>metal shell with dimples  |  | 2.84 mm pitch       | 2.84 mm pitch       |                    |
|  | 9                                      | 09 65 167 781 . 1)  | 09 65 167 681 . 1)  |                    |
|  | 15                                     | 09 65 267 781 . 1)  | 09 65 267 681 . 1)  |                    |
|  | 25                                     | 09 65 367 781 . 1)  | 09 65 367 681 . 1)  |                    |
|  | 37                                     | 09 65 467 781 . 1)  | 09 65 467 681 . 1)  |                    |
|  |  | 2.54 mm pitch       | 2.54 mm pitch       |                    |
|  | 9                                      | 09 65 166 781 .     | 09 65 166 681 .     |                    |
|  | 15                                     | 09 65 266 781 .     | 09 65 266 681 .     |                    |
|  | 25                                     | 09 65 366 781 .     | 09 65 366 681 .     |                    |
|  | 37                                     | 09 65 466 781 .     | 09 65 466 681 .     |                    |
|  | <b>Female connector</b><br>metal shell |                     | 2.84 mm pitch       | 2.84 mm pitch      |
|  |  | 9                   | 09 66 157 761 . 1)  | 09 66 157 661 . 1) |
|  |  | 15                  | 09 66 257 761 . 1)  | 09 66 257 661 . 1) |
|  |  | 25                  | 09 66 357 761 . 1)  | 09 66 357 661 . 1) |
| 37   |  | 09 66 457 761 . 1)  | 09 66 457 661 . 1)  |                    |
|  |  | 2.54 mm pitch       | 2.54 mm pitch       |                    |
| 9  |  | 09 66 156 761 .     | 09 66 156 661 .     |                    |
| 15   |  | 09 66 256 761 .     | 09 66 256 661 .     |                    |
| 25   |  | 09 66 356 761 .     | 09 66 356 661 .     |                    |
| 37   |  | 09 66 456 761 .     | 09 66 456 661 .     |                    |
| Please insert digit for flange thread or fitted female screw locks                               |  |                     |                     |                    |
| Ø 3.1 mm hole ▶ 0 <sup>1)</sup>  |  |                     |                     |                    |
| M3 ▶ 1   |  |                     |                     |                    |
| 4-40 UNC ▶ 2   |  |                     |                     |                    |
| fitted screw locks 4-40 UNC ▶ 3  |  |                     |                     |                    |

<sup>1)</sup> Not normally kept in stock