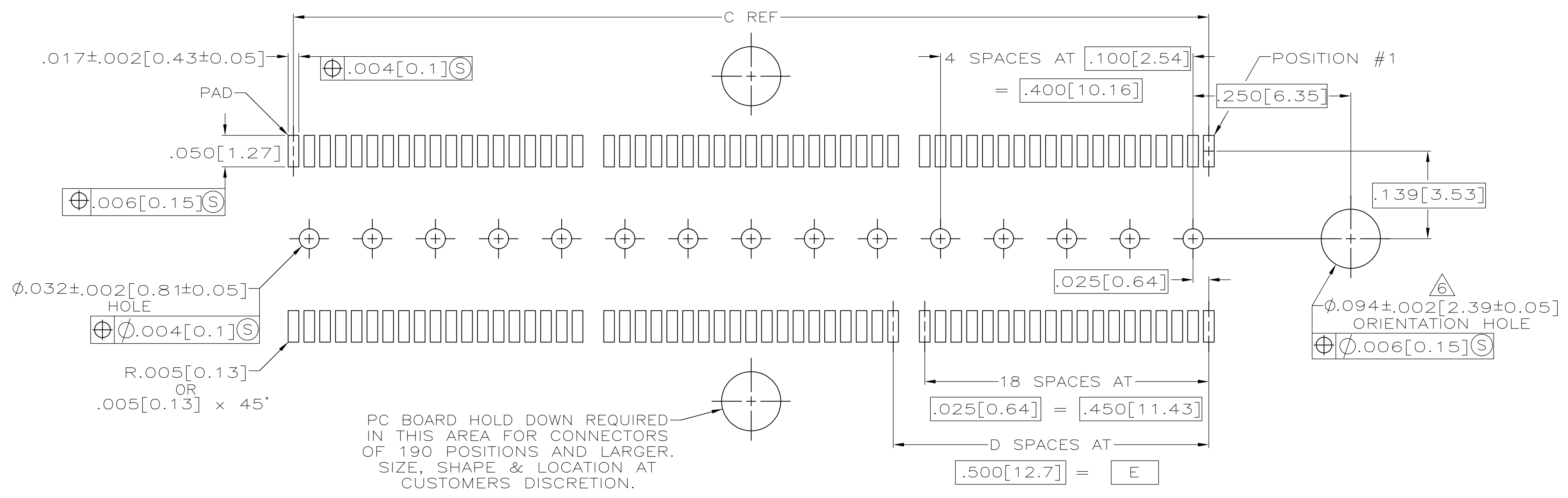
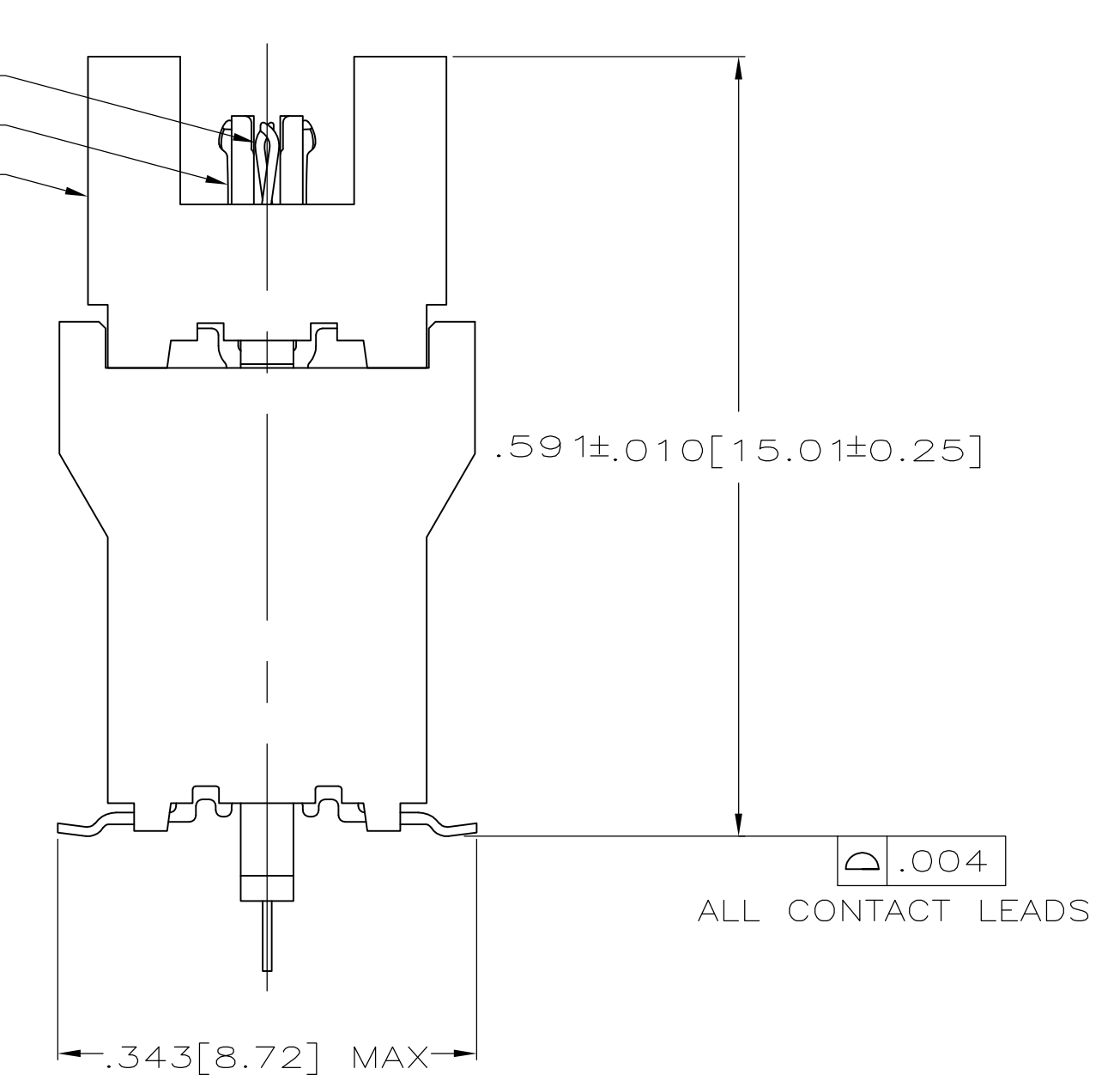
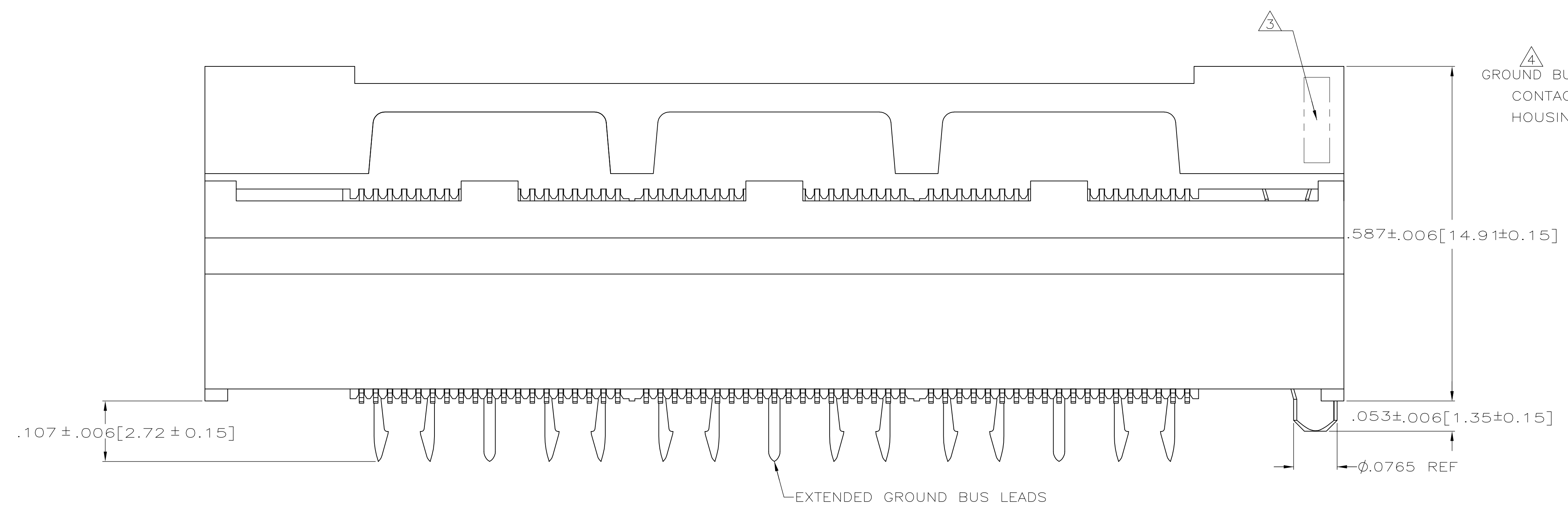


- $\Delta 1$  HOUSING: LIQUID CRYSTAL POLYMER, COLOR BLACK.  
CONTACTS: HIGH RELIABILITY COPPER ALLOY.  
GROUND BUSES: PHOSPHOR BRONZE ALLOY, UNS C51100.
- $\Delta 2$  CONTACTS & GROUND BUSES: NICKEL UNDERPLATE ALL OVER, MATING SURFACE PLATED TO MEET LEVEL 2 PERFORMANCE REQUIREMENTS OF TE PRODUCT SPECIFICATION 108-1422, SOLDER TAILS PLATED MATTE TIN.
- $\Delta 3$  DATE CODE MARKED IN AREA INDICATED ON SIDE OPPOSITE POSITION #1.
- $\Delta 4$  ONE GROUND BUS WITH 5 TAILS PER EACH MODULE.
- $\Delta 5$  TOLERANCE NON-ACCUMULATIVE.
- $\Delta 6$  FOR SLIP-FIT APPLICATIONS, ORIENTATION HOLE TO BE  $\phi .079 \pm .001 [ 2.00 \pm 0.03 ]$ .
- $\Delta$  OBSOLETE



$\Delta 3$	3.000 [ 76.2 ]	6	3.450 [ 87.63 ]	3.900 [ 99.06 ]	4.000 [ 101.6 ]	266	5767154-7
	2.500 [ 63.5 ]	5	2.950 [ 74.93 ]	3.400 [ 86.36 ]	3.500 [ 88.9 ]	228	5767154-6
	2.000 [ 50.8 ]	4	2.450 [ 62.23 ]	2.900 [ 73.66 ]	3.000 [ 76.2 ]	190	5767154-5
	1.500 [ 38.1 ]	3	1.950 [ 49.53 ]	2.400 [ 60.96 ]	2.500 [ 63.5 ]	152	5767154-4
	1.000 [ 25.4 ]	2	1.450 [ 36.83 ]	1.900 [ 48.26 ]	2.000 [ 50.8 ]	114	5767154-3
	.500 [ 12.7 ]	1	.950 [ 24.13 ]	1.400 [ 35.56 ]	1.500 [ 38.1 ]	76	5767154-2
$\Delta 3$	.000 [ 0 ]	0	.450 [ 11.43 ]	.900 [ 22.86 ]	1.000 [ 25.4 ]	38	5767154-1
	E	D	C	B	A	NO OF POS	PART NUMBER

RECOMMENDED PC BOARD LAYOUT  
(VIEWED FROM CONNECTOR SIDE)

THIS DRAWING IS A CONTROLLED DOCUMENT.

DIMENSIONS: INCHES	TOLERANCES UNLESS OTHERWISE SPECIFIED:	0 PLC ± -	1 PLC ± -	2 PLC ± -	3 PLC ± .005(0.13)	4 PLC ± -	ANGLES ± -
--------------------	--	-----------	-----------	-----------	--------------------	-----------	------------

MATERIAL	FINISH	APPROVED: A1	DATE: 26 OCT 04	BY: D. DIXON	DATE: 26 OCT 04	NAME: D. DIXON	DATE: 26 OCT 04	PRODUCT SPEC: 108-1422	APPLICATION SPEC: 114-11004	WEIGHT: -	SIZE: A1	SCALE: 8:1	SHEET: 1 OF 1	REV: B
----------	--------	--------------	-----------------	--------------	-----------------	----------------	-----------------	------------------------	-----------------------------	-----------	----------	------------	---------------	--------

CUSTOMER DRAWING