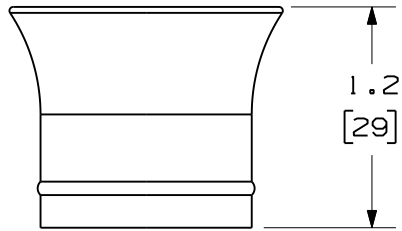
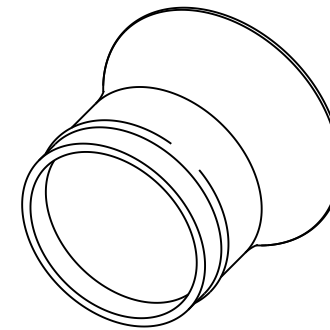
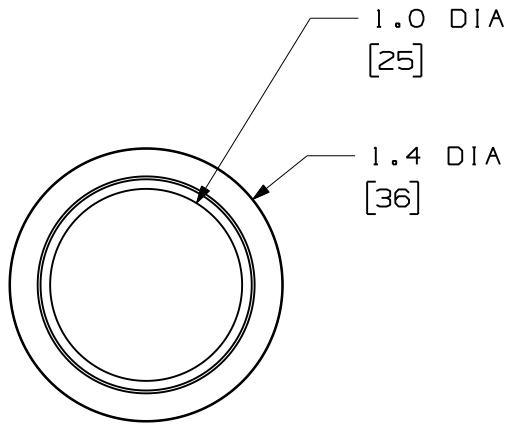



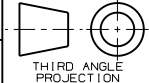
THIS COPY IS PROVIDED ON A RESTRICTED BASIS AND IS NOT TO BE USED IN ANY WAY DETRIMENTAL TO THE INTERESTS OF PANDUIT CORP.



NOTES:

1. IDENTIFICATION: EYE LOUPE 10X
2. CONSTRUCTION/DESIGN SPECIFICATIONS
 - A. HOUSING:
 - MATERIAL IS BLACK PLASTIC
 - B. LENS:
 - MATERIAL IS OPTICAL GLASS
 - LENS DIAMETER IS 1.0 [25.4] INCH
 - POWER: 10X
 - FOCAL LENGTH: 1.0 [25.4]
3. DIMENSIONS IN BRACKETS ARE METRIC [mm]



										EYE LOUPE 10X CUSTOMER DRAWING	
										 PANDUIT ™ CORP. TINLEY PARK, ILL 60477	
										 THIRD ANGLE PROJECTION	
										ALL DIMENSIONS ARE GIVEN IN INCHES UNLESS OTHERWISE SPECIFIED. DIMENSIONAL TOLERANCES ARE: (.X) ±.03 (.XXX) ±.010 (0.3) ±.03 (0.8) ANGLES	
										DRAWING FILENAME M02421AL_DC_00A.prt	
										SCALE NONE	
										PART NO. FLOUPEX10	
										DRAWING NO. 02421-13	
										SIZE A	
REV	DATE	BY	CHK	DESCRIPTION	ECN	R	CUST	SUP	OTH	DRAWN BY MC	REVIEW DRAWING NUMBERS
R	08-31-06	MC		RELEASED TO PRODUCTION	02421-13					DATE 08-30-06	CHK'D