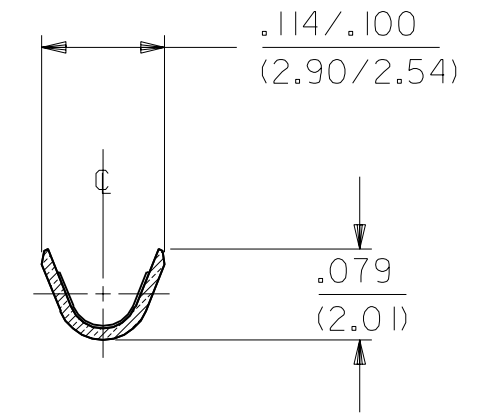
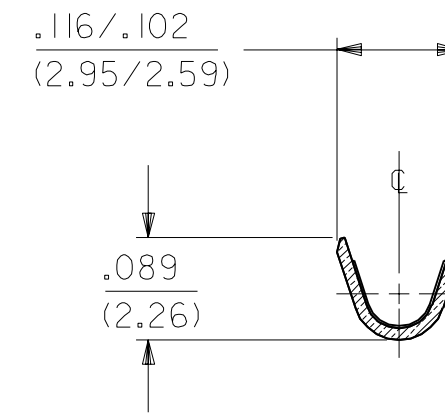
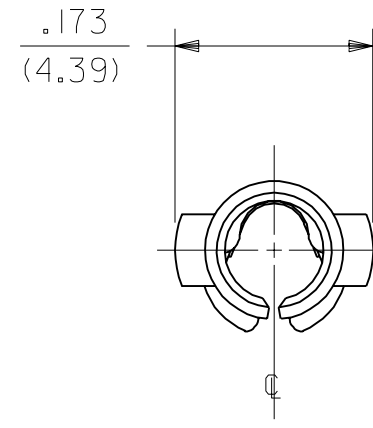
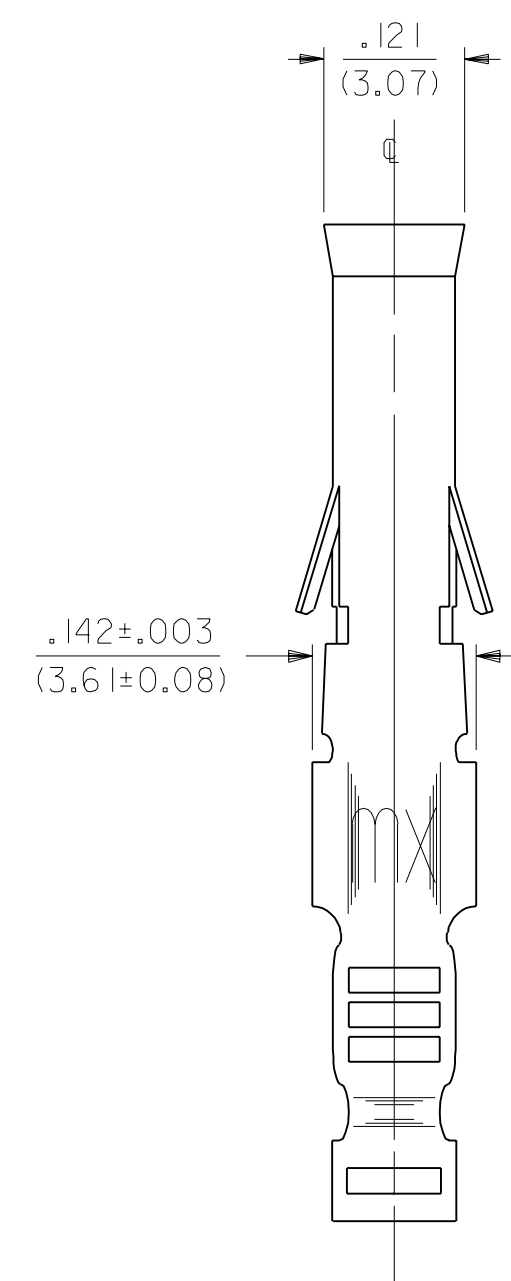
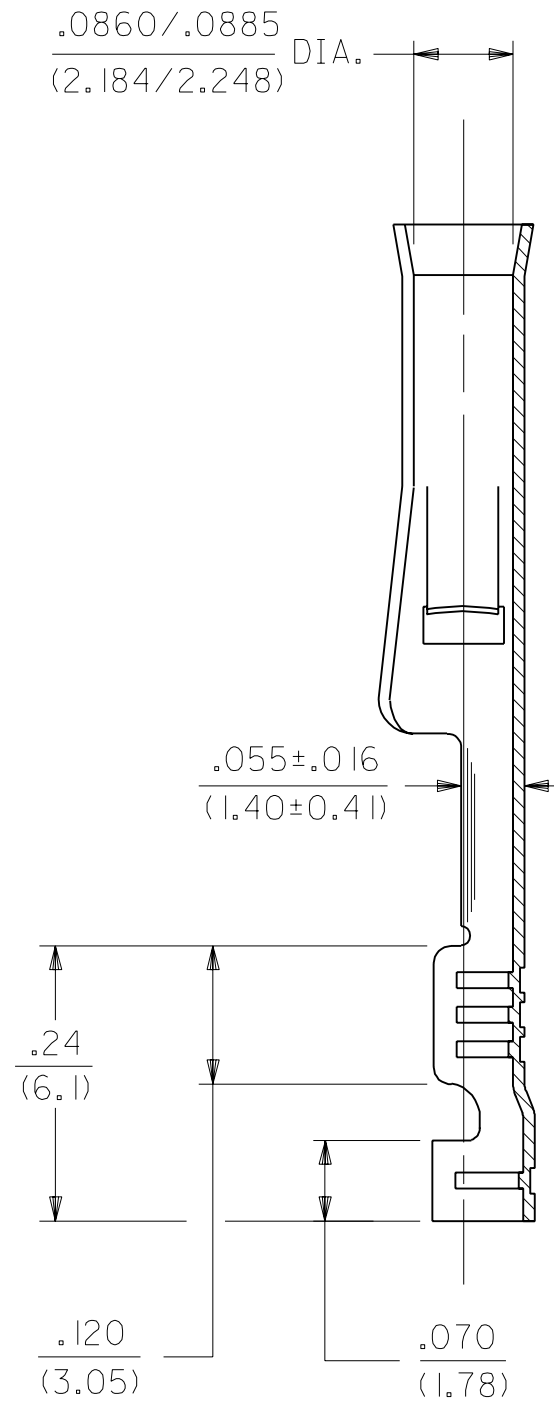
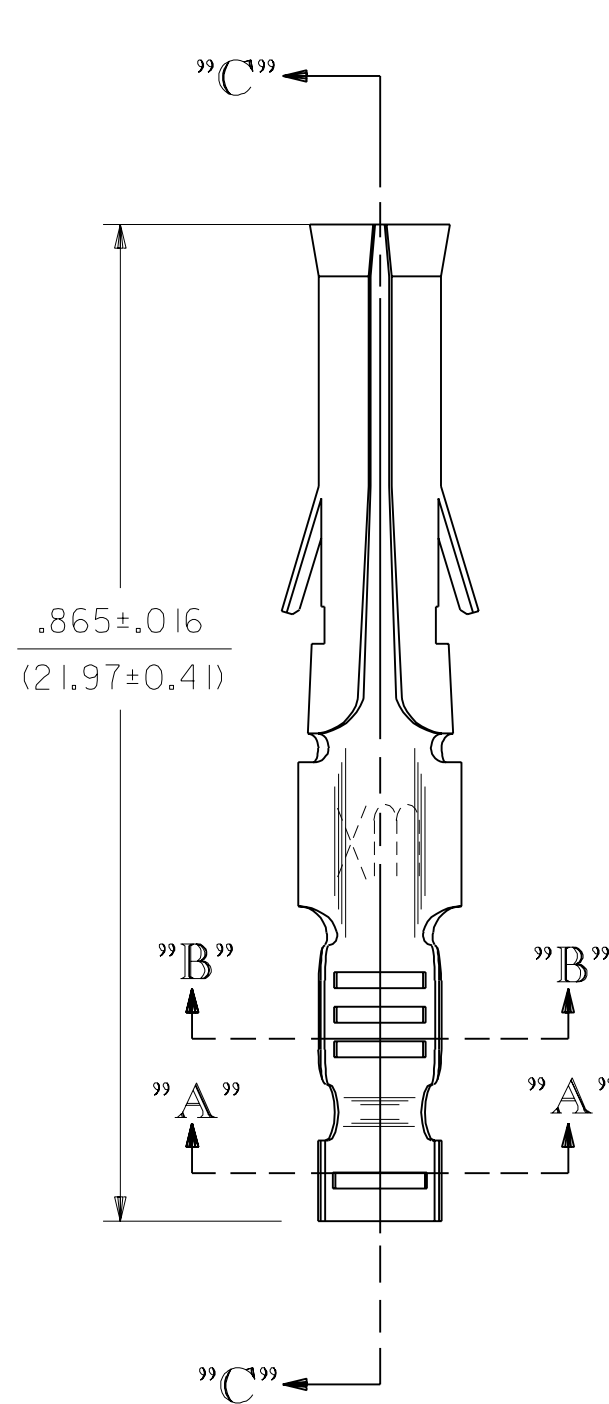


| PART NO.   | ENG. NO.      |
|------------|---------------|
| 02-09-1138 | 2871-A(P90)I  |
| 02-09-1139 | 2871-A(P90)IL |
|            | -             |
|            | -             |
|            | -             |



SECTION "A-A"

SECTION "B-B"



SECTION "C-C"

LEGEND

2871-A(\*\*\*\*)\*

FORM  
BLANK=STD. CHAIN  
L=LOOSE

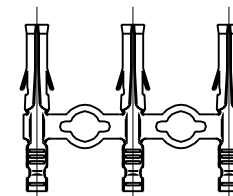
P=PREPLATE  
BLANK=POSTPLATE

FINISH CODE

NOTES:

1. MATERIAL: BRASS
2. FINISHES:  
901 HOT TIN DIP .000020/(0.0005) MIN.
3. THIS PART CONFORMS TO PRODUCT SPEC. PS-43660-9999.
4. TERMINAL FOR USE WITH .093/(2.36) SERIES HOUSINGS AND WILL ACCEPT 22 - 24 AWG WIRE.
5. INSERTION FORCE: 3.5 LBS. AVG. WHEN TERMINAL IS INSERTED INTO AN .093 SERIES HOUSING.
6. CONTACT RETENTION: 20 LBS. MIN. FROM HOUSING.

CHAIN FORM  
FULL SCALE



| REV. | REV. LTR. | REVISIONS   |
|------|-----------|---|
| C    |           | REV. BARREL ID<br>UCP#2003-0819<br>SMITH 12/09/02 |
| B    | RW        | REVISE PER<br>ECR U5 0799<br>CVC 2/14/95          |
| A    | RW        | FINAL RELEASE<br>ECR U1 0857<br>CVC 6/11/92       |

| DIMENSIONS SHOWN (METRIC) INCH                        |        |
|---|--------|
| UNLESS OTHERWISE SPECIFIED TOLERANCES: ANGULAR ± 1/2° |        |
| 3 PLACE   | ± .010 |
| 2 PLACE   | ± .014 |
| 1 PLACE   | ± 0.36 |

REVISIONS: 3 PLACES ± .010, 2 PLACES ± .014, 1 PLACE ± 0.36

TITLE: CRIMP TERM., FEMALE  
.093/(2.36) DIA.  
FOR 22 - 24 AWG WIRE

MOLEX INCORPORATED  
LITSLLE, ILL. 60532 U.S.A.

DRWG. BY: GWF  
CHK'D. BY: RW  
APP'D. BY: GWF

SEE CHART SD-2871-\*

THIS DRAWING CONTAINS INFORMATION THAT IS PROPRIETARY TO MOLEX INC. AND SHOULD NOT BE USED WITHOUT WRITTEN PERMISSION.