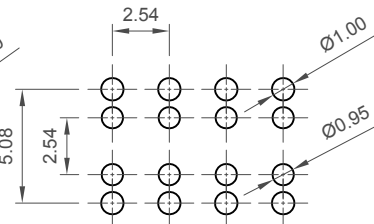
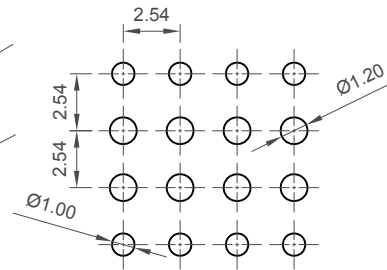


Type 1

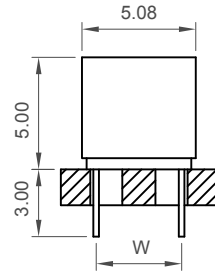
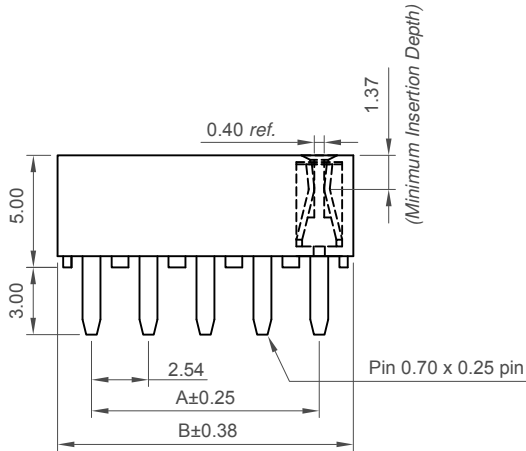
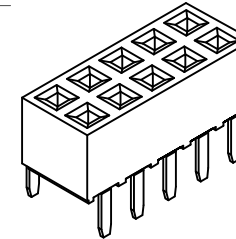


Type 2

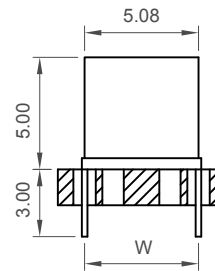


Type 3

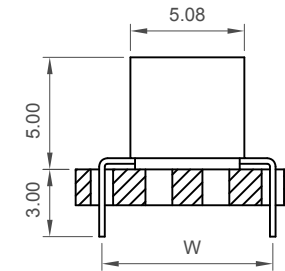
Recommended PCB Layouts



Type 1



Type 2



Type 3

Specifications 规格

Material 物料

Contact 端子: Copper Alloy
 Insulator Material 绝缘体:
 Standard 标准: Polyamide, Nylon 6T, UL 94V-0
 Options 可选: Polymer, LCP, UL 94V-0
 Polyester, PBT, UL94-V0

Plating 电镀

See Ordering Grid

Electrical 电气

Current Rating 电流额定值: 3 Amp per pin
 Insulator Resistance 绝缘电阻值: 1000 MΩ min.
 Contact Resistance 接触电阻值: 20 mΩ max.
 Dielectric Withstanding 耐电压: AC 600 V

Environmental & Mechanical 机械 & 环境

Operating Temperature 工作温度: -40° to +105°C
 Soldering Process 可焊性:

Nylon 6T (Standard 标准物料) -
 IR Reflow 回流焊: 260°C for 10 sec.
 Wave 波峰焊: 230°C for 5-10 sec.
 Manual Solder 人工焊接: 350°C for 3-5 sec

LCP (Option 可选物料) -
 IR Reflow 回流焊: 260°C for 10 sec.
 Wave 波峰焊: 250°C for 5-10 sec.
 Manual Solder 人工焊接: 350°C for 3-5 sec

PBT (Option 可选物料) - Manual Solder 人工焊接: 330°C for 3-5 sec.
 (Not suitable for hi-temp process 不适合高温制程)

Mates with 配套之公头

(Subject to pin length 在端子长度适合的条件下)

BG025 BG040 BG041 BG045
 BG050 BG065 BG066 BG070
 BG085

Ordering Grid



No. of Contacts
 04 to 80

Contact Plating

A = Gold Flash All Over (Standard)
 B = Selective Gold Flash Contact Area/Tin On Tail

C = Tin All Over
 G = 10µ" Gold Contact Area/Tin On Tail
 I = 30µ" Gold Contact Area/Tin On Tail

Packing Options

D = Tube (Standard)
 E = Tube with Cap
 F = Tube with Film
 G = Plastic Box

Insulator Material

N = Nylon 6T (Standard)
 P = PBT
 L = LCP

Type

1 = Type 1, Width = 3.80mm
 2 = Type 2, Width = 5.08mm
 3 = Type 3, Width = 7.62mm

Number of Contacts	Dimensions	
	A	B
4	2.54	5.58
6	5.08	8.12
8	7.62	10.66
10	10.16	13.20
12	12.70	15.74
14	15.24	18.28
16	17.78	20.82
18	20.32	23.36
20	22.86	25.90
22	25.40	28.44
24	27.94	30.98
26	30.48	33.52
28	33.02	36.06
30	35.56	38.60
32	38.10	41.14
34	40.64	43.68
36	43.18	46.22
38	45.72	48.76
40	48.26	51.30
42	50.80	53.84
44	53.34	56.38
46	55.88	58.92
48	58.42	61.46
50	60.96	64.00
52	63.50	66.54
54	66.04	69.08
56	68.58	71.62
58	71.12	74.16
60	73.66	76.70
62	76.20	79.24
64	78.74	81.78
66	81.28	84.32
68	83.82	86.86
70	86.36	89.40
72	88.90	91.94
74	91.44	94.48
76	93.98	97.02
78	96.52	99.56
80	99.06	102.10

Part Number		Product Description	
BG190		2.54mm Pitch Socket	
Drawing Date		Dual Row, Through-Hole, Dual Entry, Vertical	
30th October 2006			
By	CC	Tolerances (Except as Noted)	Units:
Detail	BG190 F PCN	Length X ± 0.30 X.X ± 0.20 X.XX ± 0.15 X.XXX ± 0.10	Metric (mm)
Revision	F1	Angle X° ± 5° X.X° ± 2° X.XX° ± 1° X.XXX° ± 0.5°	3rd Angle Projection
Date	28/06/17		



This drawing is confidential and copyright of Global Connector Technology, Ltd (GCT). This drawing must not be copied or disclosed without written consent. E & OE



Not to Scale	Drawn By LYH	Sheet No. 1/1
--------------	--------------	---------------

H
G
F
E
D
C
B
A

1 2 3 4 5 6 7 8