

# CM. | Compression latches with key-type knob

Zinc alloy

METRIC



## MATERIAL

Rotor, stator and knob in nickel-plated zinc alloy.

## NUT

M19x1 in brass.

## SPRING WASHER

Zinc-plated steel.

## CLOSING LEVER

Zinc-plated steel, thickness 2.5 mm.

## SCREW

M5x8 zinc-plated steel.

## INTERNAL SPRING

Stainless steel.

## ROTATION

90°.

## FEATURES AND APPLICATIONS

CM compression latches are particularly suitable for applications on cabinets or doors subject to strong vibrations.

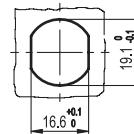
The lever rotation is only possible through the knob compression.

## SPECIAL EXECUTIONS AND ACCESSORIES

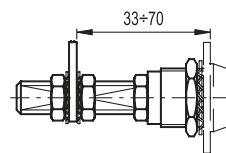
- Closing levers in other dimensions.
- Brass threaded extension for prolonged positioning of the lever (code 421137 C.PQ M5/58).



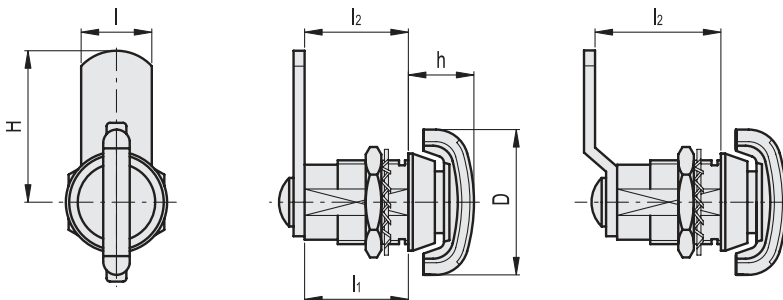
Drilling template



C.PQ



Conversion Table			
1 mm = 0.039 inch			
H		l2	
mm	inch	mm	inch
32	1.26	20	0.79
35.5	1.40	25	0.98



CM.

CM.

METRIC

Code	Description	H	D	l	l1	l2	h	⚖
421211	CM.32-20	32	36	16	20	20	15	63
421213	CM.36-25	35.5	36	16	20	25	15	65

