

## ST-OE2- 24DC/ 48DC/100

Order No.: 2911692

The illustration shows version ST-OV 2- 5 DC/ 48 DC/100

<http://eshop.phoenixcontact.de/phoenix/treeViewClick.do?UID=2911692>

Pluggable input optocoupler, with light indicator and protection circuits in the input and output circuits, input: 24 V DC, output: 8 - 48 V DC/ max. 100 mA, can be plugged on basic termination blocks

Commercial data	
EAN	4017918079710
Pack	10 pcs.
Customs tariff	85364190
Weight/Piece	0.02261 KG
Catalog page information	Page 93 (IF-2005)

**Product notes**WEEE/RoHS-compliant since:  
04/25/2007

<http://www.download.phoenixcontact.com>  
Please note that the data given here has been taken from the online catalog. For comprehensive information and data, please refer to the user documentation. The General Terms and Conditions of Use apply to Internet downloads.

## Technical data

### Input data

Nominal input voltage $U_N$	24 V DC $\pm$ 10%
Switching threshold "0" signal in reference to $U_N$	$\leq$ 0.4
Switching threshold "1" signal in reference to $U_N$	$\geq$ 0.8
Typical input current at $U_N$	9 mA
Typical response time	20 $\mu$ s
Typical turn-off time	100 $\mu$ s
Status display	Yellow LED
Name of protection	Polarity protection
	Surge protection
Protective circuit/component	Polarity protection diode
	RC element
Transmission frequency	500 Hz

### Output data

Output nominal voltage range	8 V DC ... 48 V DC
Limiting continuous current	100 mA
Voltage drop at max. limiting continuous current	0.9 V
Output circuit	2-conductor floating
Name of protection	Polarity protection
	Surge protection
Protective circuit/component	Polarity protection diode

### General data

Width	14.6 mm
Height	66.5 mm
Depth	33 mm
Test voltage input/output	2.5 kV AC
Ambient temperature (operation)	-20 °C ... 60 °C
Ambient temperature (storage/transport)	-20 °C ... 70 °C
Mounting position	Any
Standards/regulations	DIN VDE 0110

Certificates / Approvals

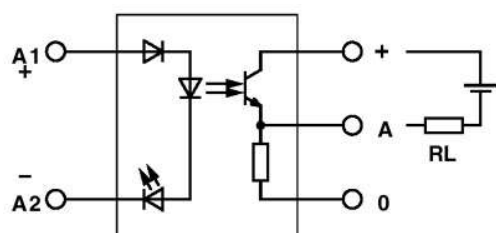


Certification

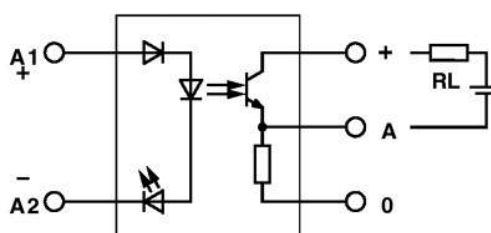
GOST

Diagrams/Drawings

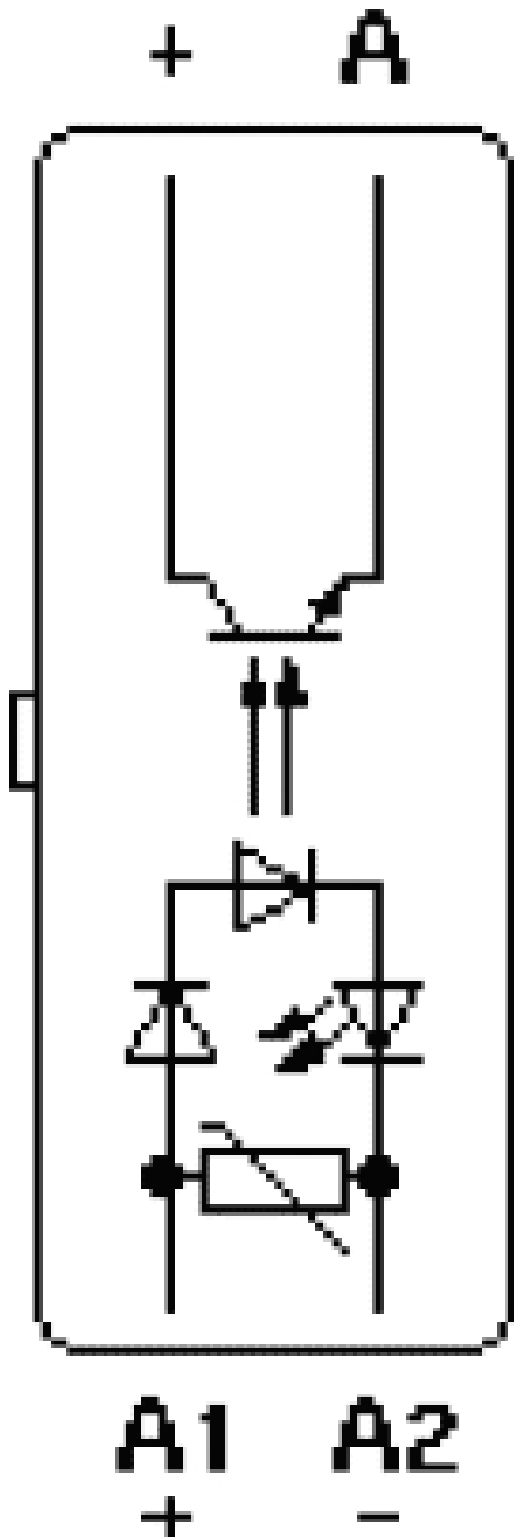
Circuit diagram



Output: 2-wire, floating, plus switching



Output: 2-wire, floating, minus switching



**Address**

PHOENIX CONTACT Inc., USA  
586 Fulling Mill Road  
Middletown, PA 17057, USA  
Phone (800) 888-7388  
Fax (717) 944-1625  
<http://www.phoenixcon.com>



© 2010 Phoenix Contact  
Technical modifications reserved;