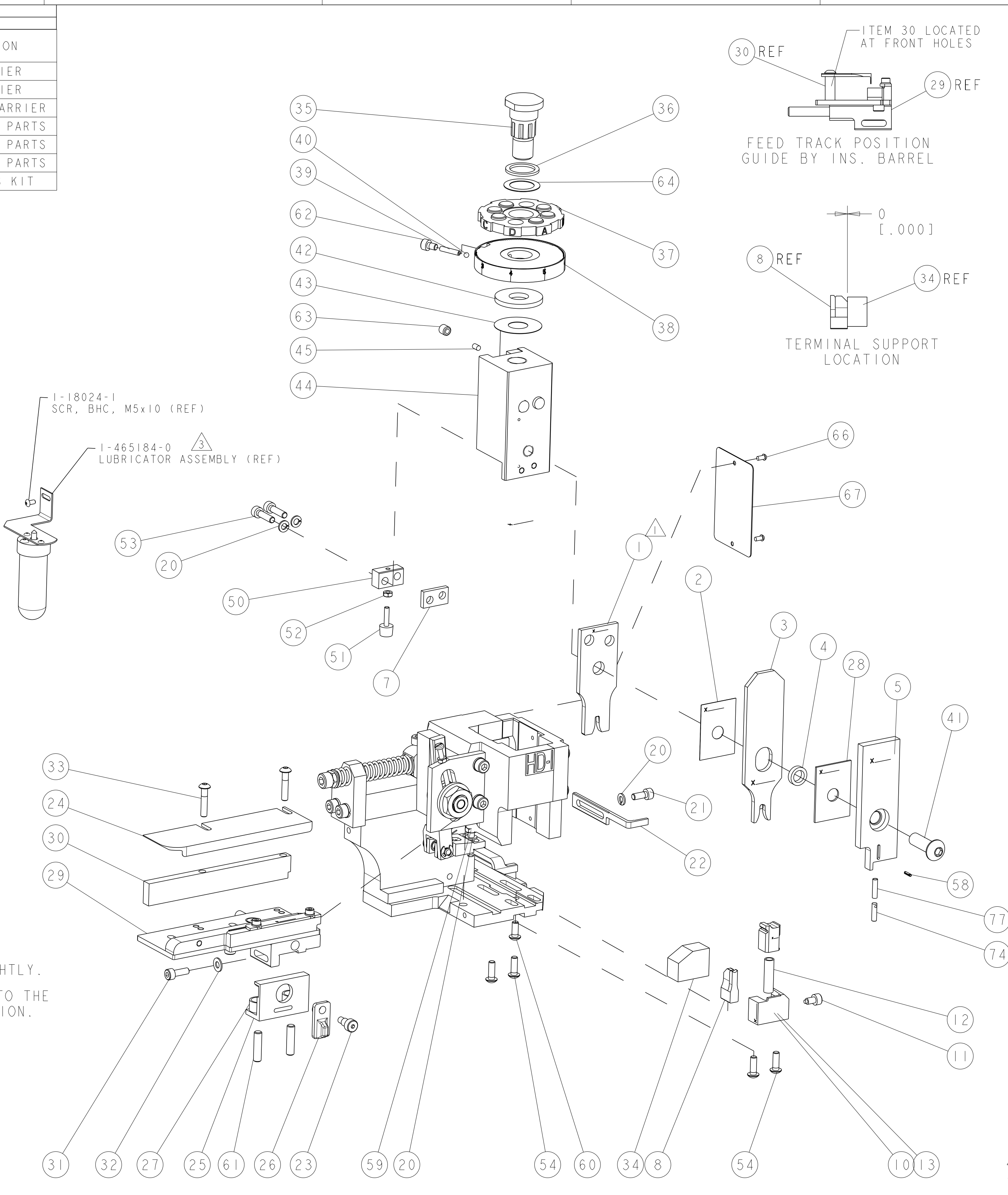
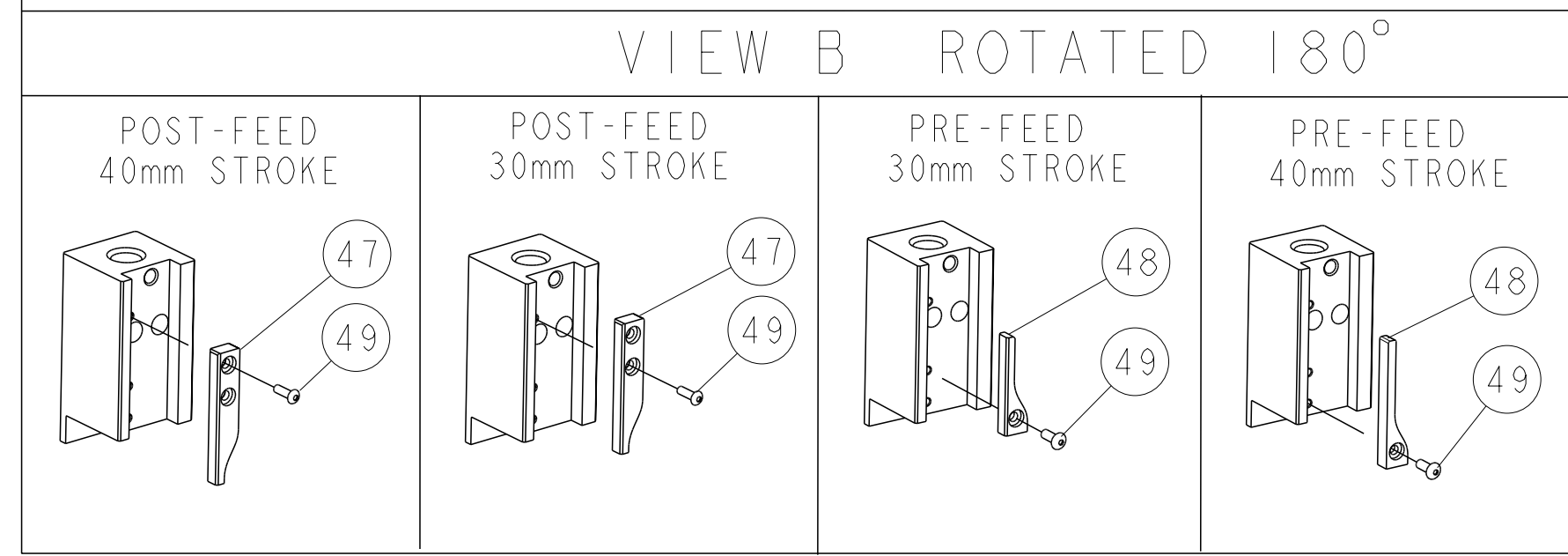


PART NUMBER	REV	TERMINATOR	FEED TYPE	DESCRIPTION
1530047-1	B	LEADMAKER	MECH POST FEED	CUTS CARRIER
1530047-2	B	BENCH	MECH PRE FEED	CUTS CARRIER
1530047-6	B	LEADMAKER	MECH POST FEED	CONTINUOUS CARRIER
7-1530047-1	B	LEADMAKER	MECH POST FEED	-1 AND SPARE PARTS
7-1530047-2	B	BENCH	MECH PRE FEED	-2 AND SPARE PARTS
7-1530047-6	B	LEADMAKER	MECH POST FEED	-6 AND SPARE PARTS
7-1530047-7	A	-	-	SPARE PARTS KIT

CRIMP DATA	TEC TERMINAL	TEC CRIMP SPECS
TERMINAL NAME: POSITIVE LOCK RECEPTACLE		
CRIMP	SIZE	TYPE
WIRE	2.79 [1.110 IN]	F
INSUL	4.06 [1.160 IN]	OV
RANGE 1.00-2.50mm		
APPL INSTRUCTIONS 408-8322		
WIRE STRIP LENGTH 2.00-3.00 [1.078-.118 IN]		
TERMINAL APPL SPEC 114-2153 FEED 26.40 [1.039 IN]		
TERMINALS APPLIED		
880645-6		
WIRE SIZE	CRIMP HEIGHT	PIN PN & LENGTH [IN]
2.50mm ²	2.08 ±0.05 [1.082 ±.002 IN]	6-354778-3 [1.2810]
2.00mm ²	1.93 ±0.05 [1.076 ±.002 IN]	7-354778-5 [1.2870]
1.50mm ²	1.75 ±0.05 [1.069 ±.002 IN]	9-354778-2 [1.2955]

- RECOMMENDED SPARE PARTS.
- GREASE RAM, CAM, CAM FOLLOWER AND FEED ROD LIGHTLY.
- CERTAIN TERMINALS REQUIRE LUBRICATION. REFER TO THE APPLICATOR INSTRUCTION SHEET FOR MORE INFORMATION.
- LUBRICATE DAILY PER THE APPLICATOR INSTRUCTION SHEET SUPPLIED WITH THE APPLICATOR.



SET UP GAGE 458637-3

LOC	DIST	DESCRIPTION	DATE	OWN	APVD
A	66	RELEASED	12FEB2009	MEH	GB
B		ECR-12-004693	12MAR2012	MY	GB

QTY	UNIT	PART NO	DESCRIPTION	ITEM NO
-	1	1-22278-0	SPRING, COMPRESSION	77
-	1	854769-4	HOLDER, INS	74
-	1	1338705-1	DOCUMENTATION PACKAGE	71
-	1	461264-1	PLATE, IDENTIFICATION	67
-	2	21017-2	SCREW, DRIVE	66
-	1	986950-1	WASHER, FLAT PRECISION	64
-	1	3-18031-0	SCR, SET, CUP POINT M6 X 6.0	63
-	1	18023-9	SCR, SKT HD CAP M4 X 6.0	62
-	2	2-18032-5	SCR, SET, FLT POINT M5 X 20.0	61
-	1	18024-7	SCR, BTN SKT HD CAP (M4 X 10.0)	60
-	1	5-18022-2	SCR, HEX HD CAP M4 X 8.0	59
-	1	21028-2	PIN, SLOTTED SPRING .062 X .250	58
-	1	1333240-1	PAWL, FEED	56
-	4	18024-8	SCR, BTN SKT HD CAP (M4 X 12.0)	54
-	2	1-18023-3	SCR, SKT HD CAP M4 X 16.0	53
-	1	18030-1	NUT, HEX, REG M3	52
-	1	811242-6	BUMPER, HOLD DOWN	51
-	1	690753-2	SPACER, TONKER	50
-	1	18024-3	SCR, BTN SKT HD CAP (M3 X 10.0)	49
-	-	1338675-1	CAM, UNIVERSAL PRE-FEED	48
-	1	1338676-1	CAM, UNIVERSAL POST-FEED	47
-	1	1320999-3	APPLICATOR SUBASSEMBLY, HDI	46
-	1	690191-1	PLUG, NYLON	45
-	1	1338660-1	RAM, (SIDE FEED)	44
-	1	690125-1	SHIM SUB-ASSY	43
-	1	690124-1	WASHER, RAM (.115)	42
-	1	2-18024-6	SCR, BTN SKT HD CAP (M8 X 25.0)	41
-	1	23241-1	BALL, STEEL	40
-	1	2-22278-7	SPRING, COMPRESSION	39
-	1	1-1320922-2	DISC, ADJUST, INSULATION CRIMP	38
-	1	354777-1	WIRE DISC, ASSEMBLY	37
-	1	22480-5	SPRING, COMPRESSION	36
-	1	690212-1	POST, RAM	35
-	1	1320934-6	SUPPORT, TERMINAL	34
-	2	1-18024-0	SCR, BTN SKT HD CAP (M4 X 20.0)	33
-	1	18027-2	WASHER, FLAT, REG M4	32
-	1	1-18023-2	SCR, SKT HD CAP M4 X 12.0	31
-	1	1-1320908-2	SPACER, STRIP GUIDE	30
-	1	1633073-7	STRIP GUIDE ASSEMBLY	29
-	1	1-455888-0	SPACER, CRIMPER	28
-	2	1-22284-0	SPRING, COMPRESSION	27
-	1	356835-1	LEVER, DRAG RELEASE	26
-	1	240792-1	DRAG, TERMINAL	25
-	1	1320928-2	PLATE, STRIP GUIDE	24
-	1	980371-4	SCR, SKT HD SHLDR 5.0 DIA X 6.0	23
-	1	690472-2	STRIPPER	22
-	1	1-18023-1	SCR, SKT HD CAP M4 X 10.0	21
-	4	18025-2	WASHER, SPRG LOCK, REG M4	20
-	-	690472-1	STRIPPER	19
-	1	1338684-2	SHEAR HOLDER, FRONT	13
-	1	3-22280-3	SPRING, COMPRESSION	12
-	1	356885-5	STOP, SHEAR	11
-	-	1-1320921-0	SHEAR HOLDER, FRONT, CUT	10
-	1	462006-6	FLOATING SHEAR, FRONT	9
-	1	2-1633134-3	ANVIL, COMBINATION .110	8
-	1	240641-5	SPACER	7
-	-	-	-	6
-	1	854772-1	DEPRESSOR, SHEAR	5
-	1	238011-2	BLOCK, CRIMPER SPACER	4
-	1	1-318903-0	CRIMPER, INSULATION OVERLAP	3
-	1	455888-1	SPACER, CRIMPER	2
-	1	456408-3	CRIMPER, WIRE PREMIUM	1

QTY	UNIT	PART NO	DESCRIPTION	ITEM NO					
-77	-76	-72	-71	-6	-2	-1	PART NO	DESCRIPTION	ITEM NO

THIS DRAWING IS A CONTROLLED DOCUMENT. DIMENSIONING AND TOLERANCING PER ASME Y14.5M-2009. DIMENSIONS: mm [IN]. TOLERANCES UNLESS OTHERWISE SPECIFIED: 9 PLC ±, 1 PLC ±, 2 PLC ±, 3 PLC ±, 4 PLC ±, ANGLES ±, FINISH ±.

APPROVED: N. DEMING, 19JAN2009. NAME: N. DEMING. PRODUCT SPEC: APPLICATION SPEC: See Table. MATERIAL: WEIGHT: CUSTOMER ACCESSIBLE PRODUCTION DRAWING. SCALE: 3:5. SHEET 1 OF 1. REV B.

STE TE Connectivity. SIDE FEED HDI APPLICATOR. SIZE: CAGE CODE: DRAWING NO: A100779. DRAWING NO: 1530047.