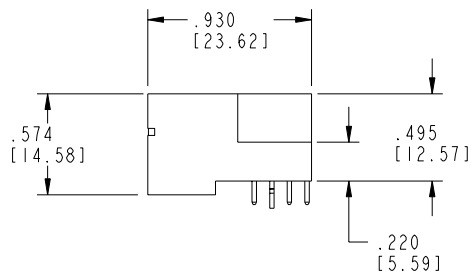
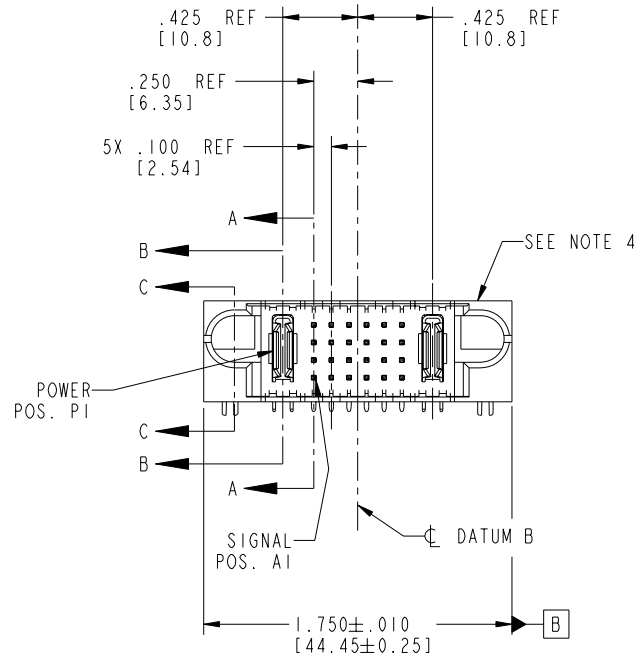


Tous droits strictement réservés. Reproduction ou communication a des tiers interdite sous quelque forme que ce soit sans autorisation écrite du propriétaire. Propriété de c FCI. Droits de reproduction FCI.

All rights strictly reserved. Reproduction or issue to third parties in any form whatever is not permitted without written authority from the proprietor. Property of FCI. Copyright FCI.

PRODUCT NO.	ROWS	PWR		SIGNAL						PWR	
		E1	P1	1	2	3	4	5	6	P2	E2
51730-031-- NOTE: ③	D C B A			H	H	H	H	H	H	U	U
				G	G	G	G	G	G	G	G
				F	F	F	F	F	F	F	F
				E	E	E	E	E	E	E	E



CODE	DIM "M" MATING LENGTH	CONTACT TYPE
E	.220 [5.59]	SIGNAL
F	.220 [5.59]	SIGNAL
G	.220 [5.59]	SIGNAL
H	.220 [5.59]	SIGNAL
U	.270 [6.86]	SIGNAL
PA	N/A [N/A]	POWER
HA	N/A [N/A]	HOLD-DOWN

mat'l code		SEE NOTE 2		tolerances unless otherwise specified		CUSTOMER	
ltr	ecn no.	dr	date	linear	.XX±.01/0.X±0.3	COPY	
A	V12149	JRW	08/09/01		.XXX±.005/0.XX±0.13	projection	
B	V21291	CGD	09/10/02		.XXX±.002/0.XX±0.051	title	
C	DG05-0319	CS	09/08/05	angles	0°±2°	RIGHT ANGLE SOLDER HEADER	
D	DG05-0560	CS	12/26/05	dr	C. DAILY 09/10/02	product family	
				enr	M. MOSTOLLER 09/10/02	PwrBlade	
				chr	M. MOSTOLLER 09/10/02	code	
				appd	M. MOSTOLLER 09/10/02	213	
sheet index		revision	D	D	D	sheet	
		sheet	1	2	3	1 of 4	

INCH/MM		scale		A		51730-031	
1:1						dwg no	
						1 of 4	

cage code 22526 4

Pro/E

PDM: Rev:D

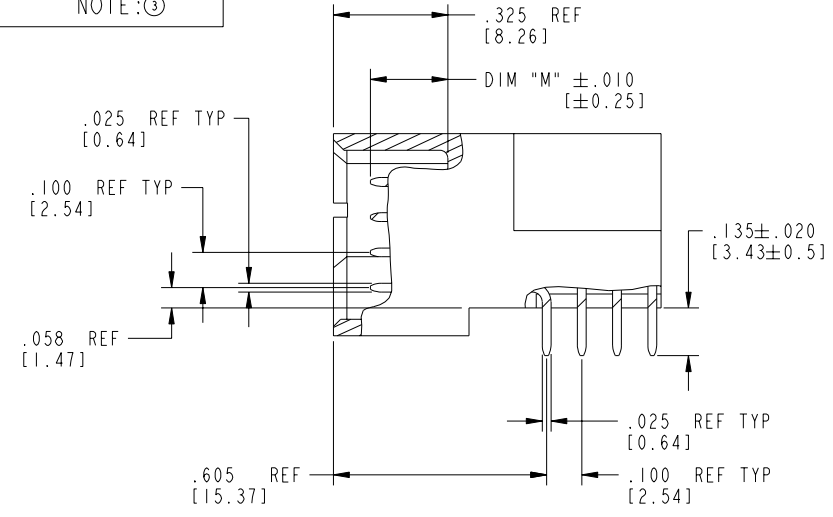
STATUS Released

Printed: Oct 08, 2006

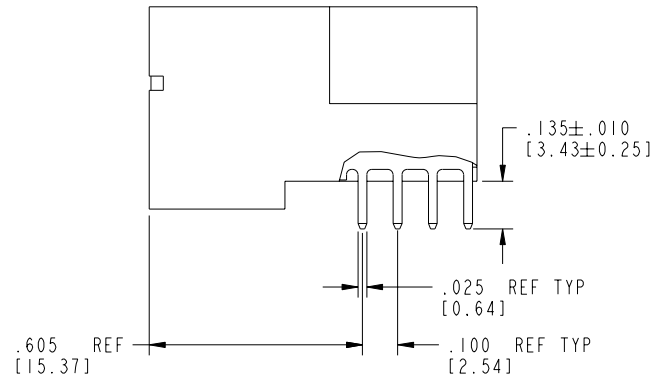
Tous droits strictement réservés. Reproduction ou communication a des tiers interdite sous quelque forme que ce soit sans autorisation écrite du propriétaire. Propriété de c FCI. Droits de reproduction FCI.

All rights strictly reserved. Reproduction or issue to third parties in any form whatever is not permitted without written authority from the proprietor. Property of FCI. Copyright FCI.

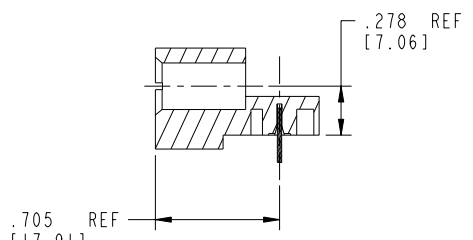
PRODUCT NUMBER  
51730-031--  
NOTE:③



BROKEN-OUT SECTION A-A  
SCALE 2:1



BROKEN-OUT SECTION B-B  
SCALE 2:1



SECTION C-C

mat'l code		SEE NOTE 2		tolerances unless otherwise specified		CUSTOMER		 www.fciconnect.com	
ltr	ecn no.	dr	date	linear	.XX±.01/0.X±0.3	COPY		projection	title
D					.XXX±.005/0.XX±0.13				IP + 24S + IP
				angles	.XXX±.0020/0.XXX±0.051				RIGHT ANGLE SOLDER HEADER
					0°±2°				product family
				dr	C. DAILY 09/10/02				PwrBlade
				enr	M. MOSTOLLER 09/10/02			size	code
				chr	M. MOSTOLLER 09/10/02			A	213
				appd	M. MOSTOLLER 09/10/02			dwg no	sheet
								51730-031	2 of 4
sheet index	revision sheet							scale	
								1:1	

cage code 22526

Pro/E

PDM: Rev:D

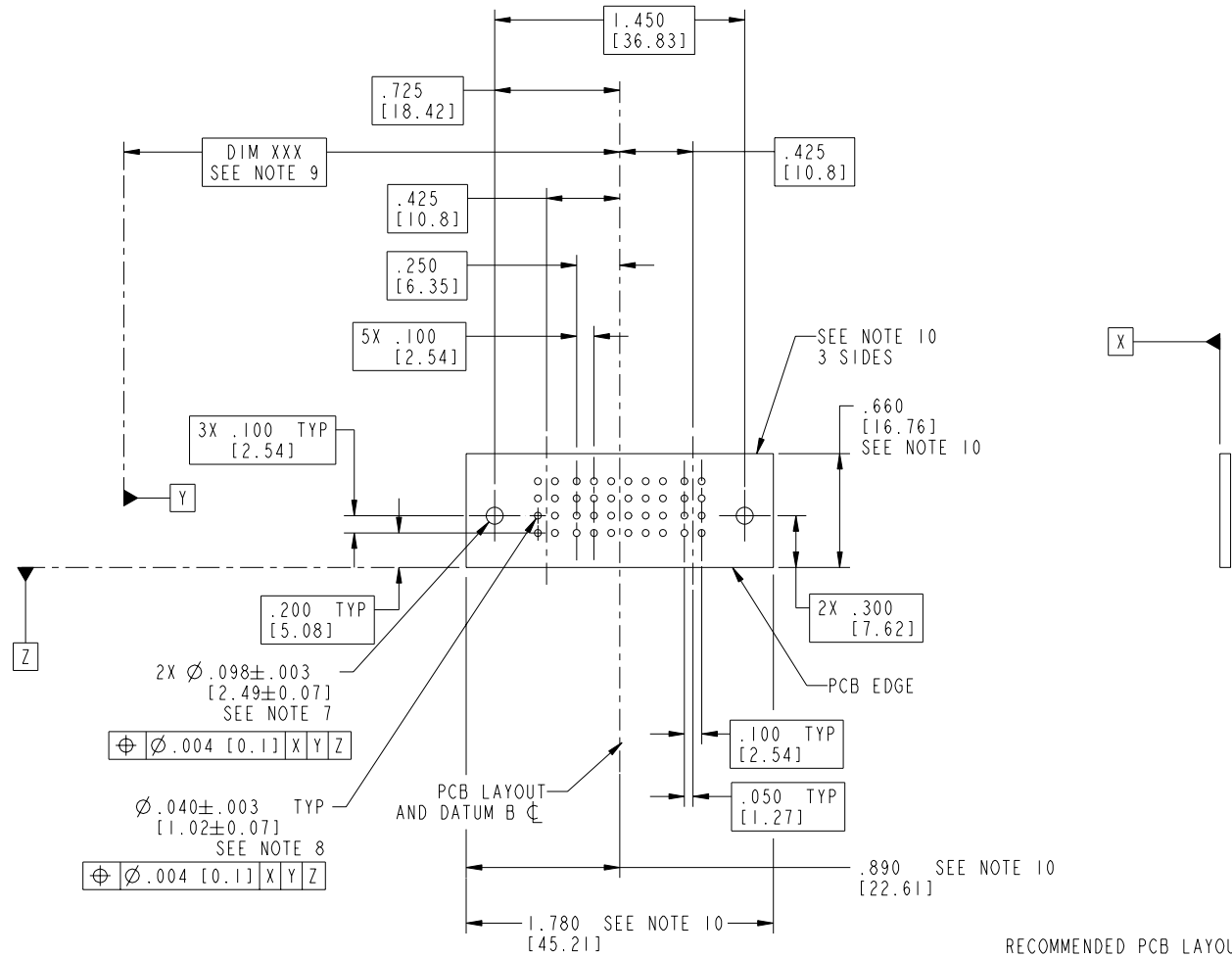
STATUS Released

Printed: Oct 08, 2006

Tous droits strictement réservés. Reproduction ou communication a des tiers interdite sous quelque forme que ce soit sans autorisation écrite du propriétaire. Propriété de c FCI. Droits de reproduction FCI.

All rights strictly reserved. Reproduction or issue to third parties in any form whatever is not permitted without written authority from the proprietor. Property of FCI. Copyright FCI.

PRODUCT NUMBER  
51730-031\_\_  
NOTE: ③



RECOMMENDED PCB LAYOUT

mat'l code		SEE NOTE 2		tolerances unless otherwise specified		CUSTOMER		 www.fciconnect.com	
ltr	ecn no.	dr	date	linear	.XX±.01/0.X±0.3	COPY		title	
D					.XXX±.005/0.XX±0.13	projection		IP + 24S + IP	
				angles	.XXX±.0020/0.XX±0.051			RIGHT ANGLE SOLDER HEADER	
				dr	0°±2°	INCH/MM		product family	
				engr	C. DAILY 09/10/02	scale		PwrBlade	
				chr	M. MOSTOLLER 09/10/02	1:1		code	
				appd	M. MOSTOLLER 09/10/02			213	
sheet index		revision sheet						size	
								dwg no	
								51730-031	
								sheet	
								3 of 4	

cage code 22526

Pro/E

PDM: Rev:D

STATUS Released

Printed: Oct 08, 2006

Tous droits strictement réservés. Reproduction ou communication a des tiers interdite sous quelque forme que ce soit sans autorisation écrite du propriétaire. Propriété de c FCI. Droits de reproduction FCI.

**A**  
**FCI**

All rights strictly reserved. Reproduction or issue to third parties in any form whatever is not permitted without written authority from the proprietor. Property of FCI. Copyright FCI.

PRODUCT NUMBER  
51730-031\_\_  
NOTE:③

NOTES:

1. DIMENSIONS AND TOLERANCES ARE IN ACCORDANCE WITH ASME Y14.5M, 1994 UNLESS OTHERWISE SPECIFIED.

CONNECTOR NOTES:

② HOUSING MATERIAL: UL 94 V-0 GLASS FILLED HIGH-TEMP THERMOPLASTIC  
POWER CONTACT MATERIAL: COPPER ALLOY  
SIGNAL PIN MATERIAL: COPPER ALLOY

3. PLATING:

51730-031,51730-031LF,PLATING SPEC SEE PRINT:100064183.

④ MANUFACTURER'S NAME, P/N, AND DATE CODE TO APPEAR ON THIS SURFACE.

5. PRODUCT SPECIFICATION GS-12-149.  
APPLICATION SPECIFICATION BUS-20-067.

PCB NOTES:

6. ALL HOLE DIAMETERS ARE FINISHED HOLE SIZE.  
7. MOUNTING HOLES, WHERE APPLICABLE, ARE UNPLATED.

⑧  $\varnothing .0453 \pm .0010$  [1.151 $\pm$ 0.025] DRILLED HOLES PLATED WITH .0003 [0.008] MIN SnPb OVER .001 [0.03] TO .003 [0.08] Cu PLATING TO ACHIEVE  $\varnothing .040 \pm .003$  [1.02 $\pm$ .07] HOLE.

⑨ "DIM XXX" TO BE DETERMINED BY THE CUSTOMER.

⑩ CONNECTOR KEEP-OUT ZONE.

mat'l code				SEE NOTE 2		tolerances unless otherwise specified		CUSTOMER		<b>A</b> <b>FCI</b>		www.fciconnect.com	
ltr	ecn no.	dr	date	linear	.XX±.01/0.XX±0.3	COPY		projection		title		IP + 24S + IP	
D					.XXX±.005/0.XX±0.13					RIGHT ANGLE SOLDER HEADER			
				angles	XXXX±.0020/0.XXX±0.051					product family		PwrBlade	
				dr	0°±2°			INCH/MM		size		213	
				enrg	C. DAILY 09/10/02			scale		A		4 of 4	
				chr	M. MOSTOLLER 09/10/02			1:1		51730-031			
				appd	M. MOSTOLLER 09/10/02								
sheet index	revision sheet												

cage code 22526 4

PDM: Rev:D

STATUS Released

Printed: Oct 08, 2006