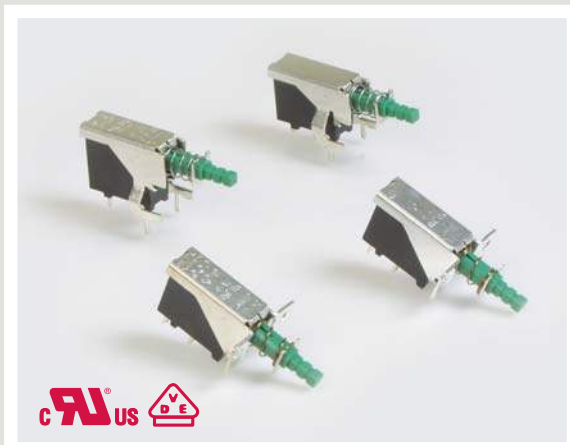




SERIES P197 SWITCHES

POWER PUSHBUTTON SWITCHES



SPECIFICATIONS

Contact Rating:	10A @ 125 VAC - UL, CUL 5A @ 250 VAC - UL, CUL, VDE TV-5 @ 125 VAC - UL, CUL In Rush, 80A @ 250 VAC - VDE
Life Expectancy:	10,000 cycles
Contact Resistance:	100mΩ max. typical; initial @ 2-4 VDC
Insulation Resistance:	1,000M Ω min.
Dielectric Strength:	> 1,500 volts 1 minute > 3,000 volts between poles
Actuation Force:	300 ±100 gram force
Operating Temperature:	-20°C to +85°C

MATERIALS

Housing:	6/6 Nylon
Actuator:	Acetal
Bracket:	Tin plated steel
Contacts:	Silver plated copper alloy
Terminals:	Silver plated copper alloy

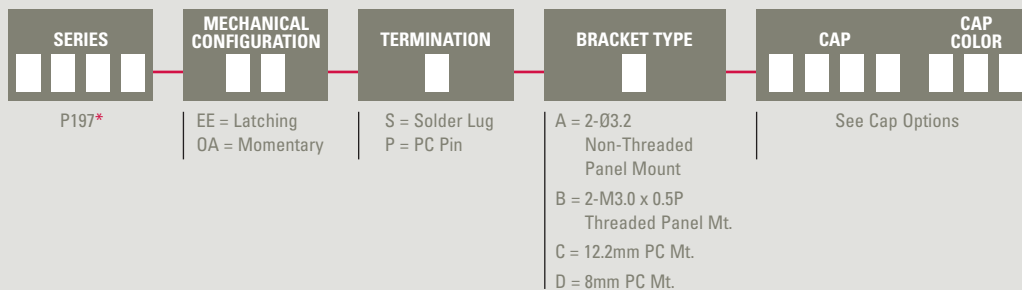
FEATURES & BENEFITS

- ▶ Power pushbutton rated up to 10amps
- ▶ Latching & momentary functions
- ▶ Panel & PC board mount options

APPLICATIONS/MARKETS

- ▶ Telecommunications
- ▶ Networking
- ▶ Computers/servers
- ▶ Performance audio
- ▶ Instrumentation
- ▶ Low power on/off designs
- ▶ External hard drives and modems

HOW TO ORDER

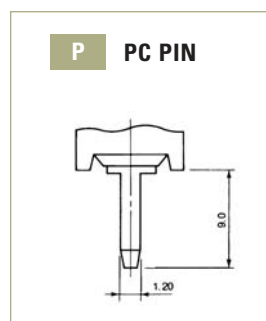
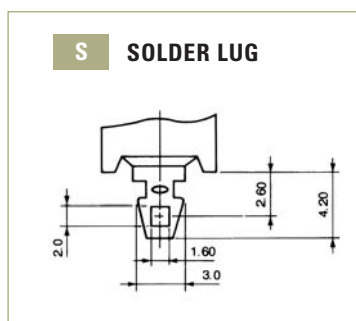


▶ ▶ ▶ **Example Ordering Number**
P197-EE-P-B-TA12-BLU

*Note: Also available in 2 pole version P297.
Contact E-Switch for more information.

Specifications subject to change without notice.

TERMINATION OPTIONS



TACT SWITCHES

NAVIGATION SWITCHES

PUSHBUTTON SWITCHES

TOGGLE SWITCHES

ROCKER SWITCHES

SLIDE SWITCHES

SNAP-ACTION SWITCHES

DIP SWITCHES

KEYLOCK SWITCHES

ROTARY SWITCHES

DETECTOR SWITCHES

CAP OPTIONS

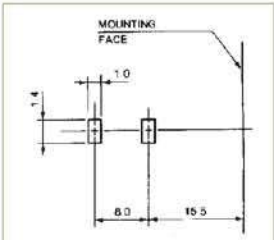
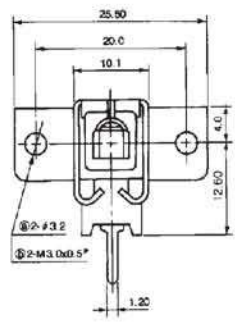
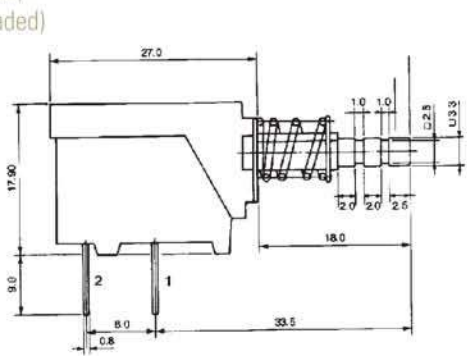
SERIES P197 SWITCHES

POWER PUSHBUTTON SWITCHES

BRACKET OPTIONS

A/B

A = 2 - Ø3.2 (Non-Threaded)
B = 2 - M3.0 x 0.5P (Threaded)



P.C. MOUNTING

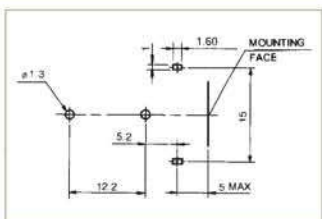
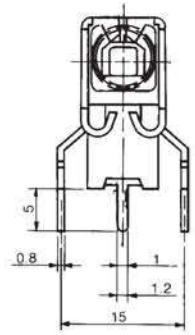
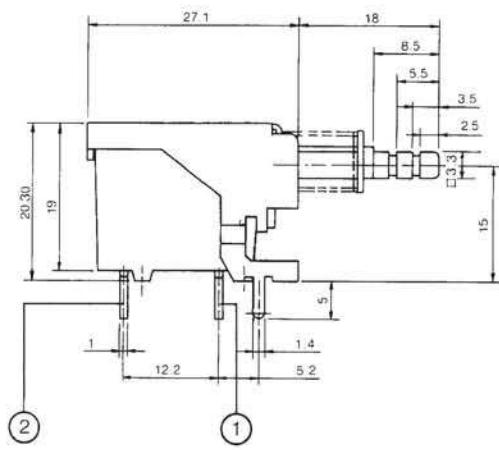


SCHEMATIC

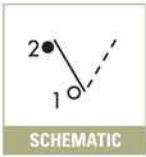
BRACKET OPTIONS

C

C = 12.2 mm P.C. Pin Spacing (measured from terminal 2 to terminal 1)



P.C. MOUNTING

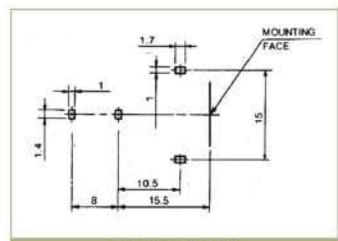
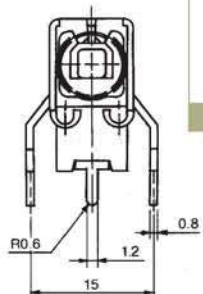
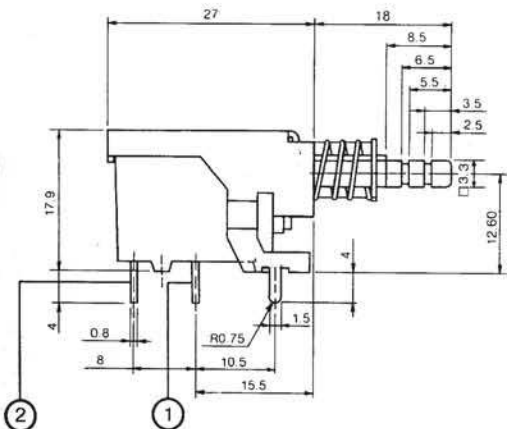
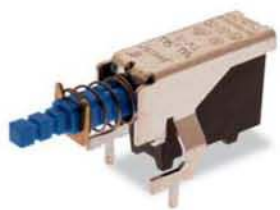


SCHEMATIC

BRACKET OPTIONS

D

D = 8 mm P.C. Pin Spacing (measured from terminal 2 to terminal 1)



P.C. MOUNTING



SCHEMATIC