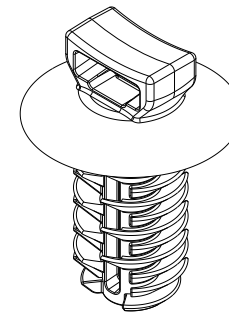
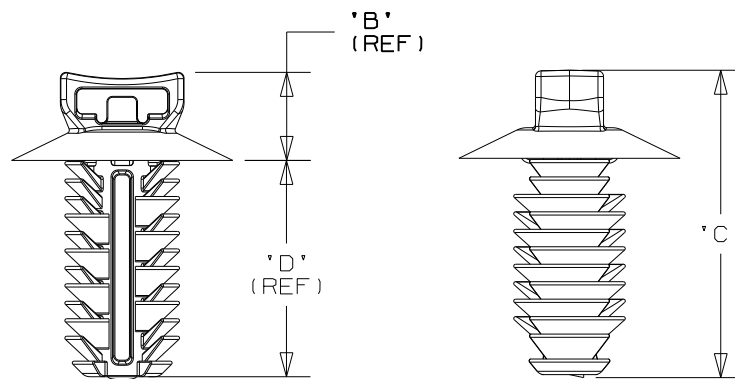
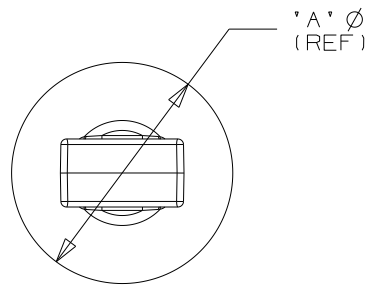


THIS COPY IS PROVIDED ON A RESTRICTED BASIS AND IS NOT TO BE USED IN ANY WAY DETRIMENTAL TO THE INTERESTS OF PANDUIT CORPORATION.

PANDUIT PART NUMBER	USED WITH CABLE TIES	DIMENSIONS				WEIGHT grams/100pcs
		'A' (REF)	'B' (REF)	'C'	'D' (REF)	
PUM-925- <u> </u>	M, I, S, LH, H	19.6	6.6	26.7	19.1	116.4



SCALE 1.5:1

NOTES:

- SEE WWW.PANDUIT.COM FOR PART NUMBER SUFFIX DESIGNATION FOR PACKAGE SIZE, MATERIAL AND COLOR.
- (*) DIMENSIONAL VARIANCE IS POSSIBLE DUE TO MOLDING PROCESS RELATED SINK MARKS.
- APPLICATION SPECIFICATION:
HOLE DIAMETER: 8.8 - 9.3 mm
PANEL THICKNESS: 1.0 - 16.0 mm

CAD FILENAME/LAYERS		10B015CY/00 DC_GB0239MQ_10	
PANDUIT CORP.		TINLEY PARK, ILLINOIS	
PUM-925 PUSH UMBRELLA MOUNT 925			
UNLESS OTHERWISE SPECIFIED, ALL DIMENSIONS ARE METRIC TOLERANCE: ±0.5MM			
DRAWN BY	TMSA	MAT'L:	SCALE 1.5:1 UNLESS NOTED
DATE	12-29-06	NYLON 6/6	DRAWING NO.
CHK'D			GB0239MQ
			DWG SIZE A

REV	DATE	BY	CHK	DESCRIPTION	ECN	R	CUST	SUP
10	3/11/11	BWG	JADE	CHANGED MATERIAL NOTE. REMOVED MATERIAL BOX FROM CHART.	GB0239MQ	10	PBC	